



EAST DUNDEE

Riverfront Master Plan



ANALYZE



ENVISION



CONNECT



PRIORITIZE



IMPLEMENT

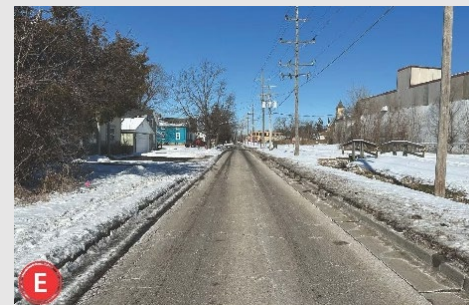
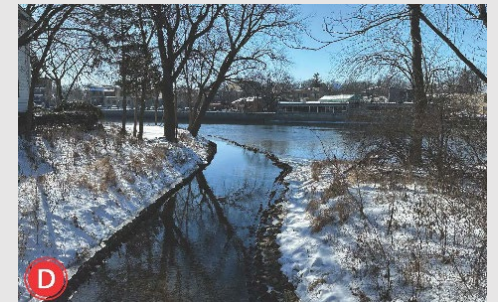
AGENDA



PLANNING AREA



EXISTING CONDITIONS



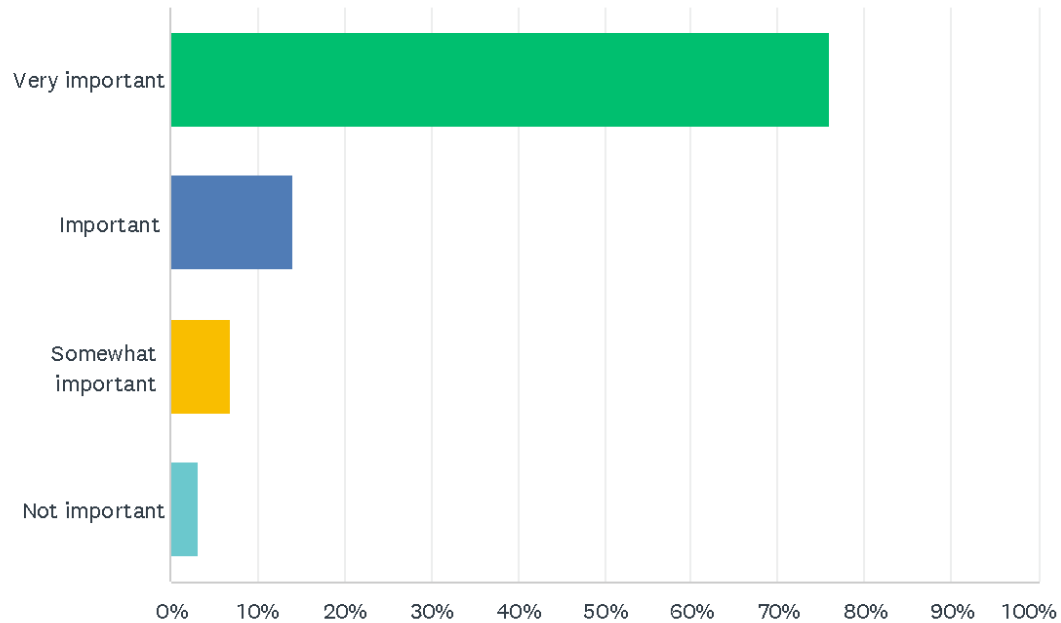


ANALYZE:

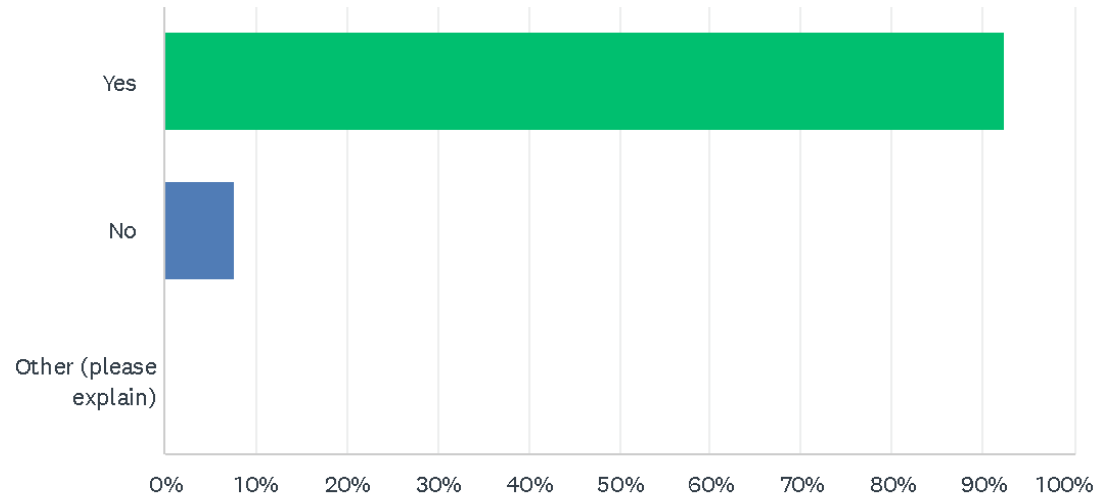
Inventory & Analysis

- Corridor Inventory
- Jurisdictional Constrains
- Site Analysis Mapping
- Establish Goals and Objectives

Q10 How important is the river to East Dundee's identity?



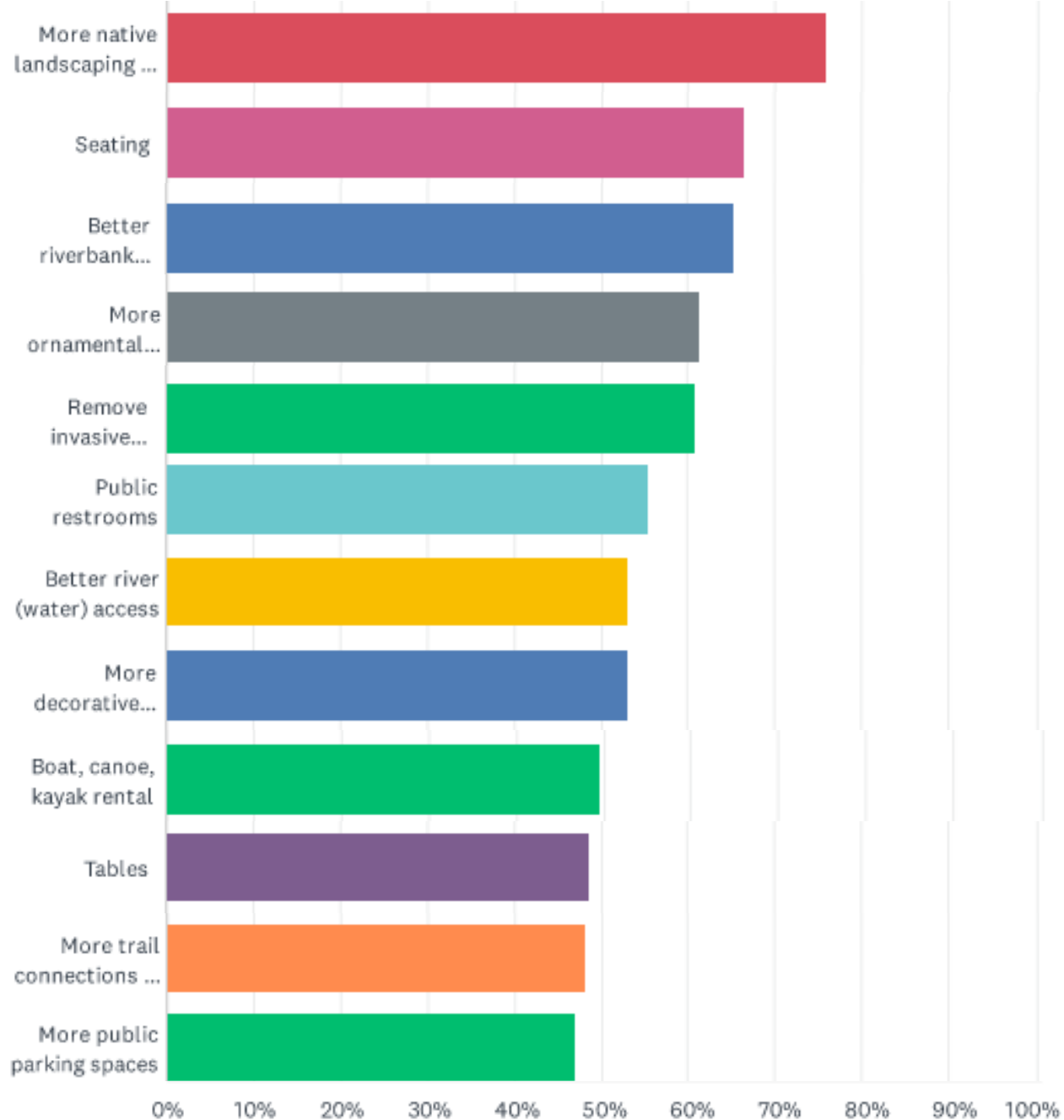
Q11 Should the Village of East Dundee improve and enhance the river and/or the riverfront experience through East Dundee?



CONNECT: Public Engagement

- Online Survey
- Stakeholder Focus Groups
- Community Open House

Q13 If you answered "yes", please tell us what improvements will enhance the Fox River and/or the East Dundee Riverfront? Check all that apply.

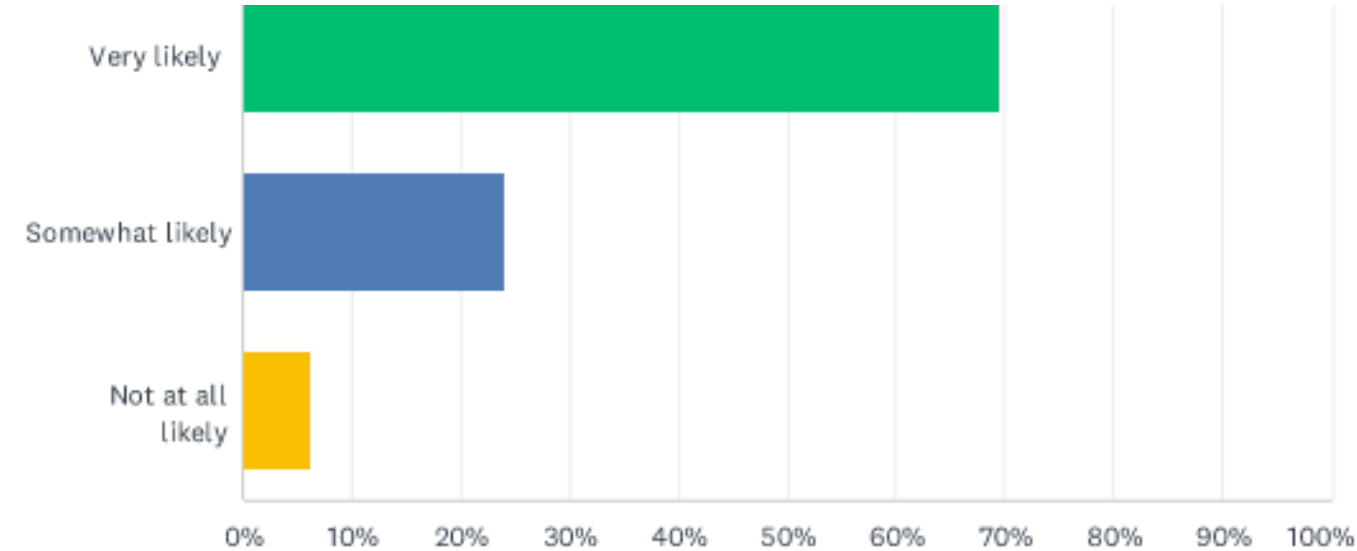


CONNECT:

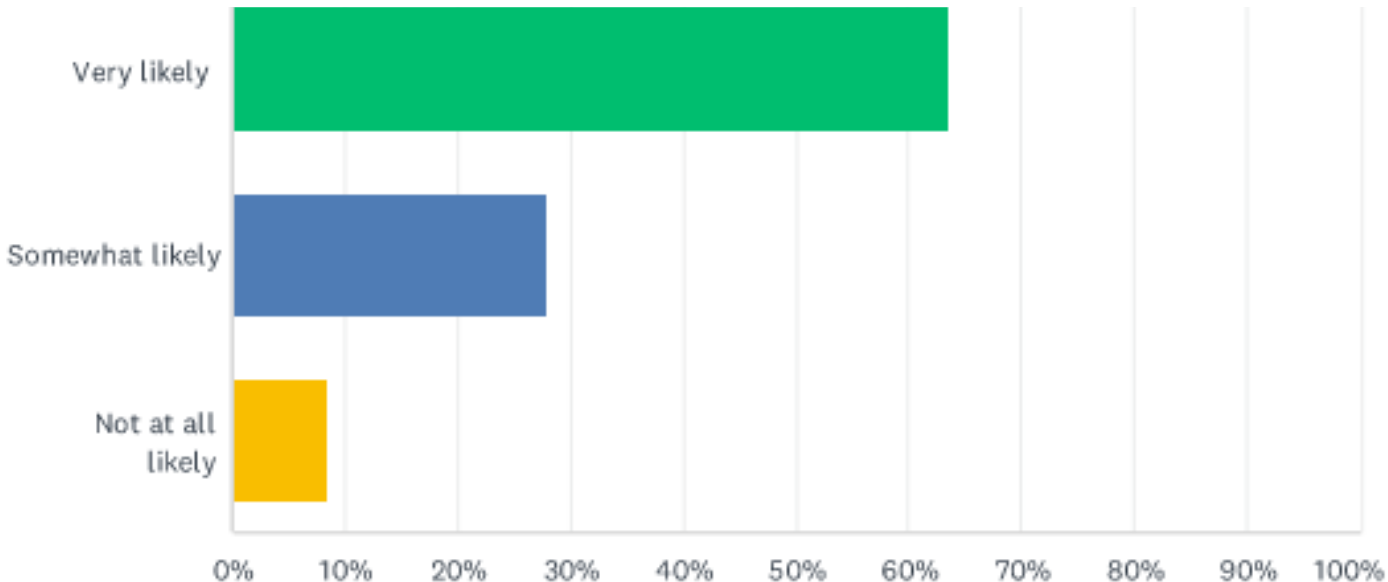
Public Engagement

- Online Survey Results

Q19 If the river and/or riverfront are improved, how likely would you be to use it?



Q20 If the Village invests in improving the riverfront area, would you support the Village allocating finances and resources towards the improvements?



CONNECT:

Public Engagement

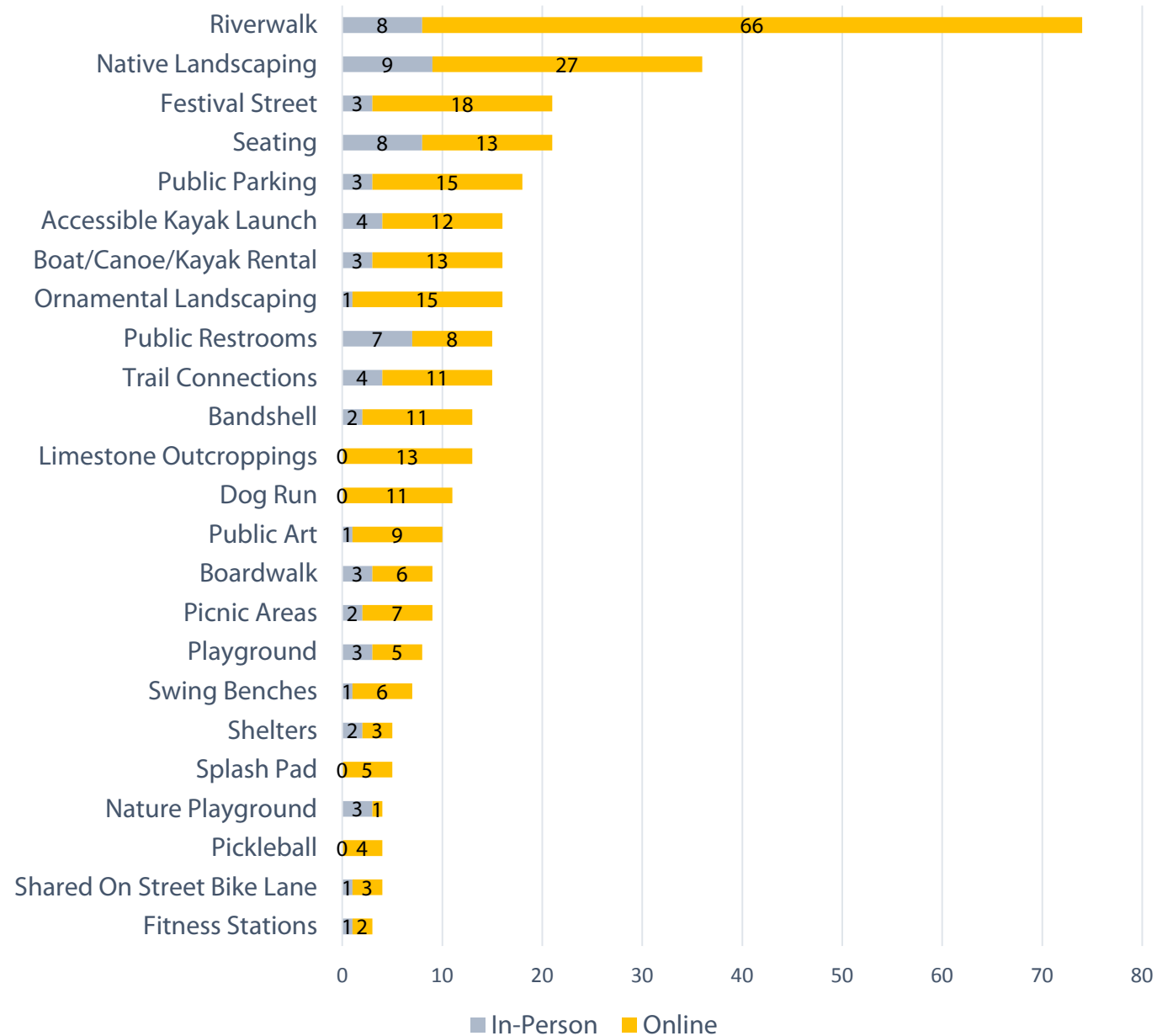
- Online Survey Results

Which of the following proposed amenities are most important to you? (TOTAL)



CONNECT: Public Engagement

- Community Input In-Person
- Community Input Online

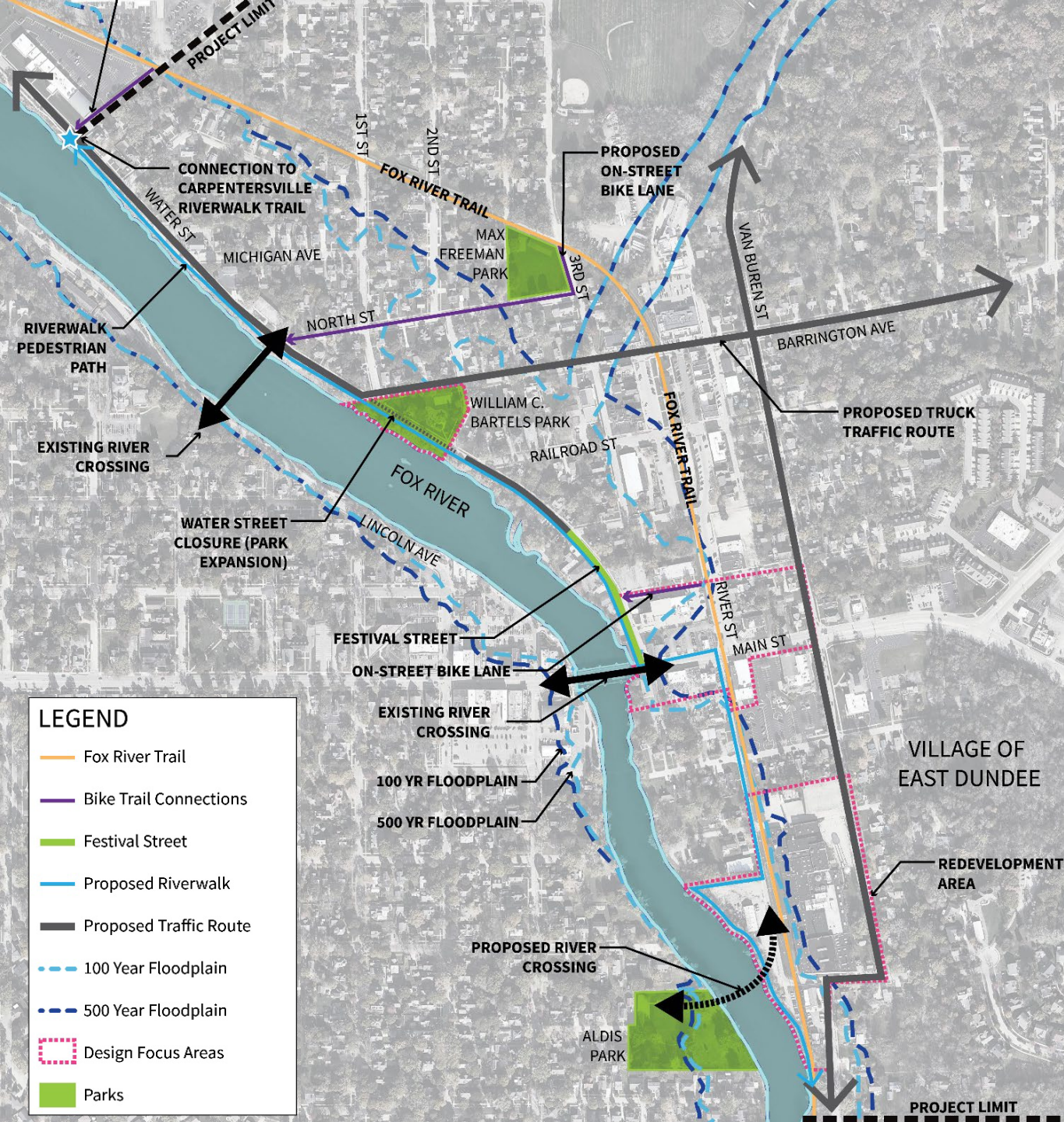




ENVISION:

Alternative Framework Plans

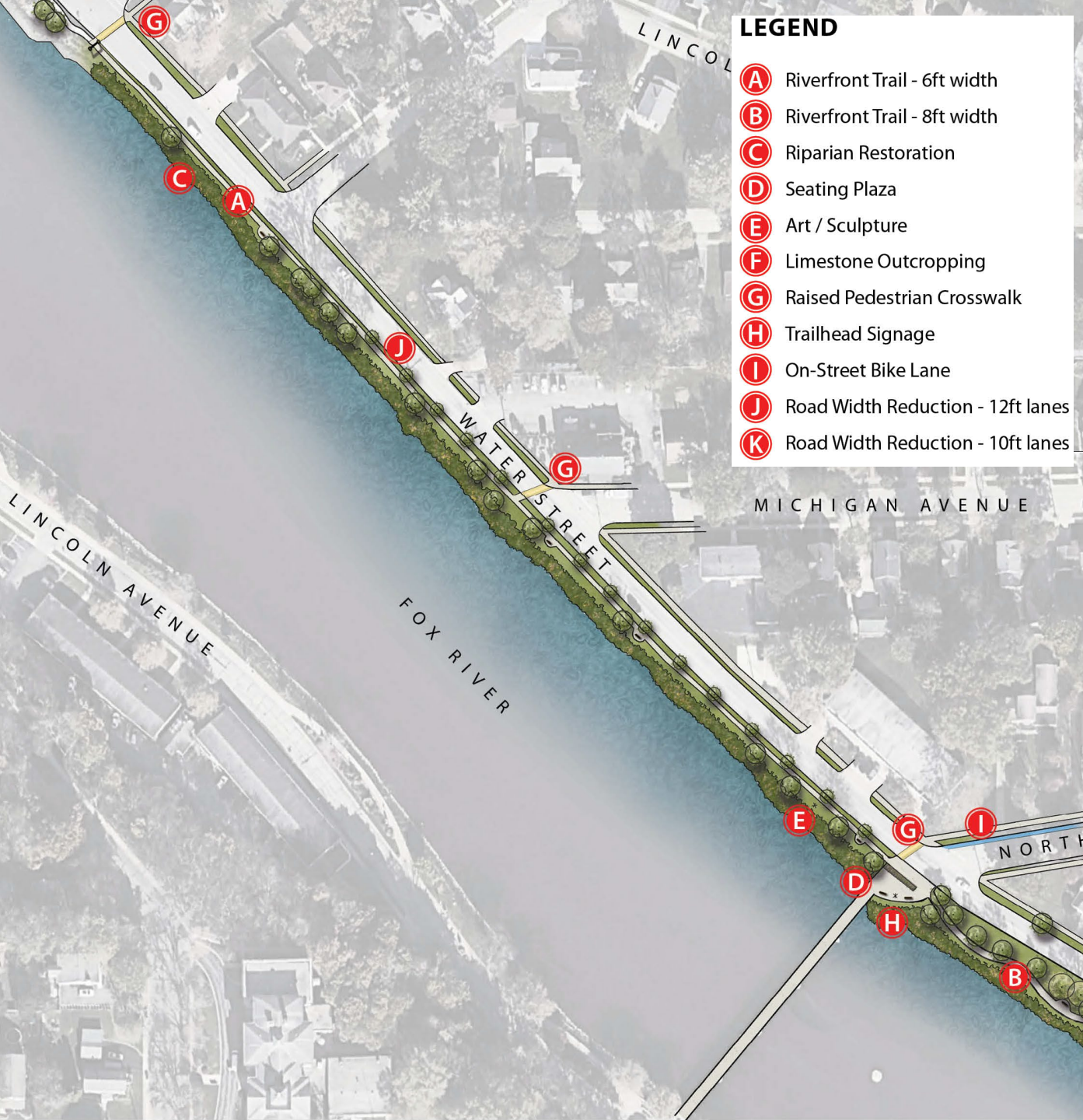
- Strategy Development
- Collaborative Process
- Visioning Exploration





LEGEND

- (A) Riverfront Trail - 6ft width
- (B) Riverfront Trail - 8ft width
- (C) Riparian Restoration
- (D) Seating Plaza
- (E) Art / Sculpture
- (F) Limestone Outcropping
- (G) Raised Pedestrian Crosswalk
- (H) Trailhead Signage
- (I) On-Street Bike Lane
- (J) Road Width Reduction - 12ft lanes
- (K) Road Width Reduction - 10ft lanes



ENVISION:

Water Street – North Segment





ENVISION:

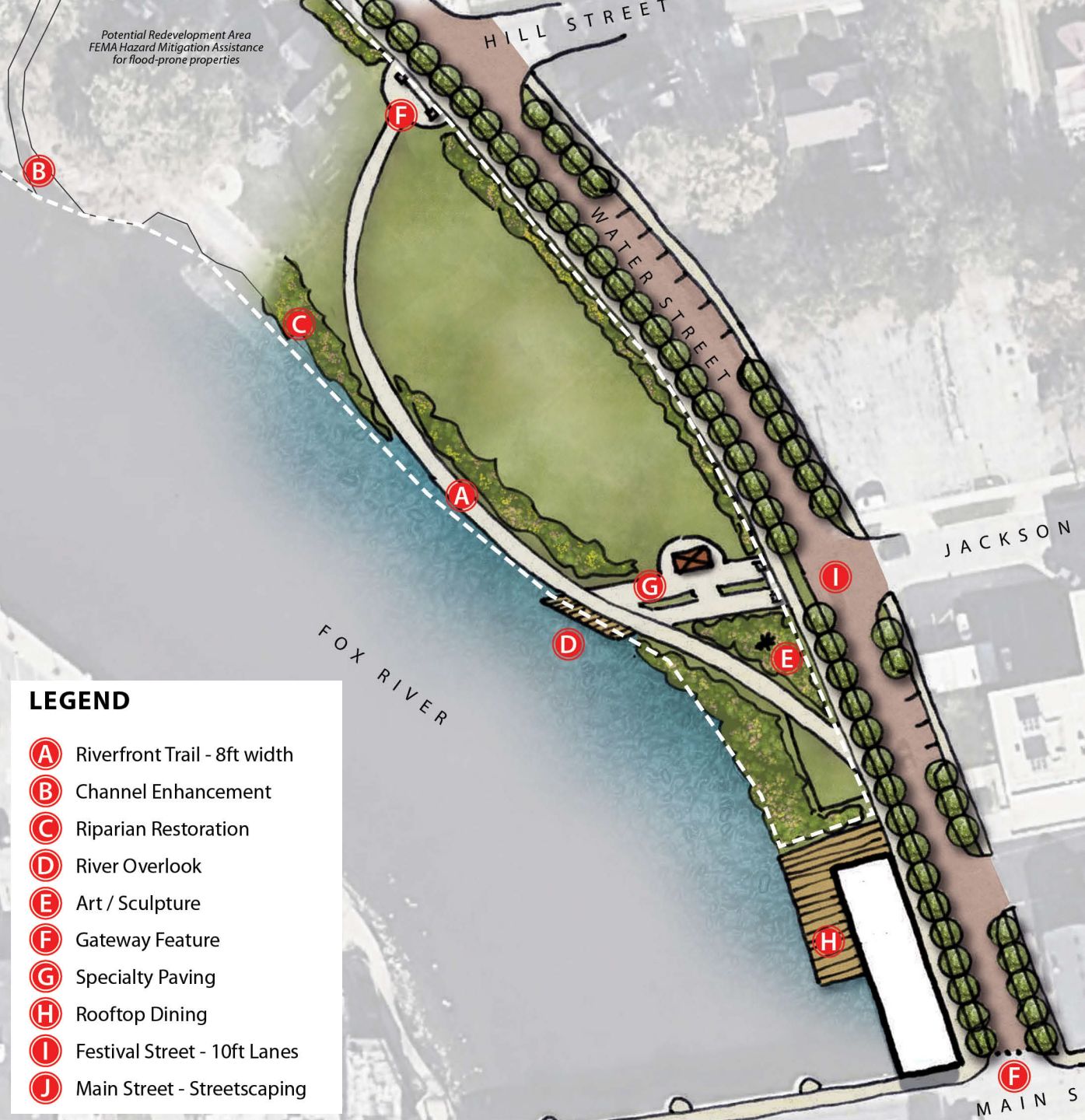
William Bartels Park



LEGEND

- A** Riverfront Trail - 8ft width
- B** Community Pavilion
- C** Riparian Restoration
- D** Swing Benches
- E** Art / Sculpture
- F** Limestone Outcropping
- G** Nature Play Environment
- H** Gateway Wall Feature
- I** Reroute Water Street
- J** Road Width Reduction - 12ft lanes
- K** Road Width Reduction - 10ft lanes



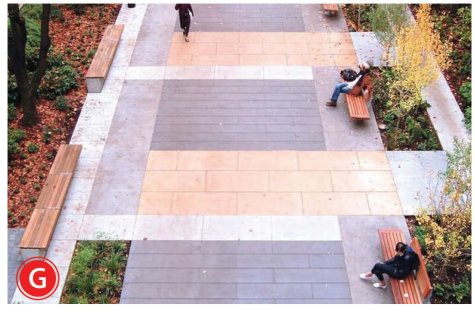
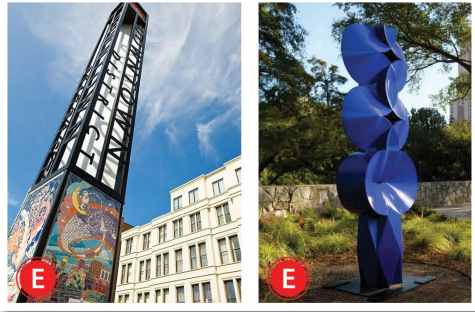


- LEGEND**
- (A)** Riverfront Trail - 8ft width
 - (B)** Channel Enhancement
 - (C)** Riparian Restoration
 - (D)** River Overlook
 - (E)** Art / Sculpture
 - (F)** Gateway Feature
 - (G)** Specialty Paving
 - (H)** Rooftop Dining
 - (I)** Festival Street - 10ft Lanes
 - (J)** Main Street - Streetscaping



ENVISION:

Water Street – South Segment





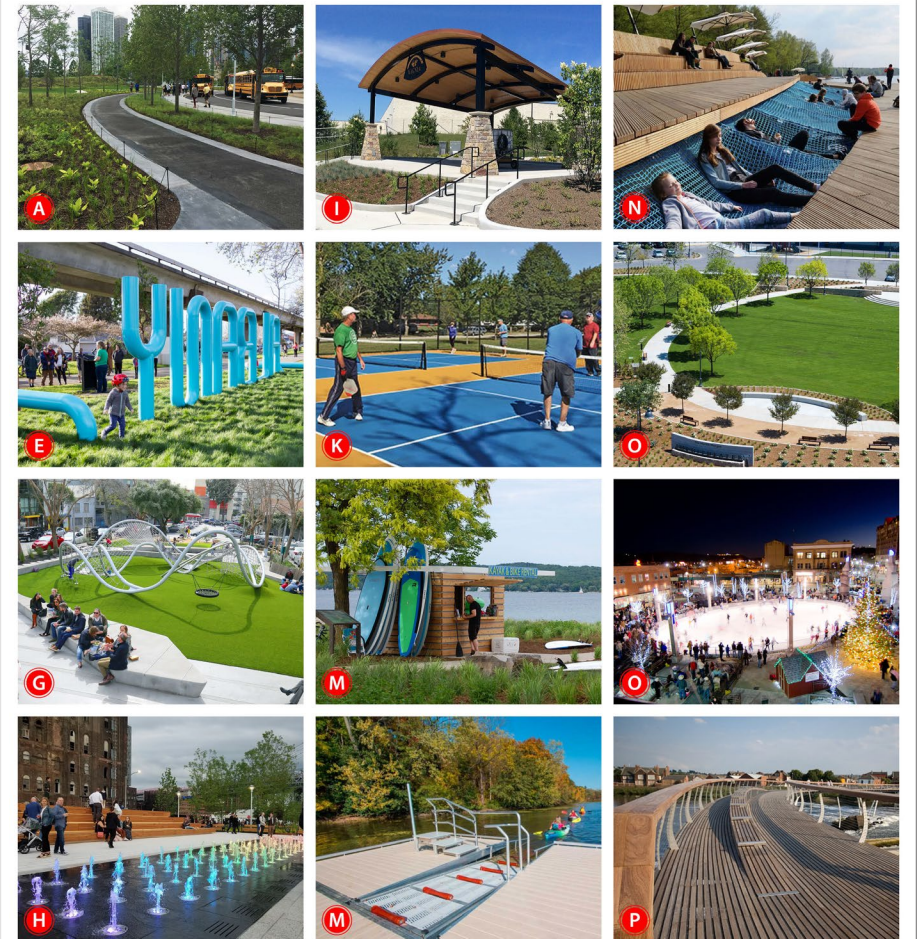
ENVISION:

Haeger Property Redevelopment



LEGEND

- A** Riverfront Trail
- B** Community Pavilion
- C** Riparian Restoration
- D** Sunning Steps
- E** Art / Sculpture
- F** Limestone Outcropping
- G** Urban Play Environment
- H** Urban Water Play Feature
- I** Amphitheater
- J** Restroom Building
- K** Pickleball Courts
- L** Community Gardens
- M** Accessible Launch/Rentals
- N** River Overlook
- O** Event Lawn
- P** Pedestrian Bridge Crossing
- Q** Gateway Feature





PRIORITIZE:

PROPOSED IMPLEMENTATION PRIORITIES

ONGOING INITIATIVES

- Shoreline Restoration / Enhancement
- Removal of Invasive Vegetation
- Installation of Native Plantings
- Property Acquisition and Development
- Consider and Develop Grant Opportunities
 - FEMA Hazard Mitigation Assistance
 - Land and Water Conservation Fund (LWCF)
 - Open Space Land Acquisition Development (OSLAD)
 - Regional Trails Program (RTP)
 - Tourism Attraction Grant Program (TAG)
 - Community Development Block Grant

PRIORITY 1 – William Bartels Park

- Plan/Design/Construct Park Improvements

PRIORITY 2 – Water Street North Segment (North of Railroad Street)

- Plan/Design/Construct Water Street North Segment

PRIORITY 3 – Haeger Property Redevelopment

- Acquire/Plan/Design/Construct Haeger Property Redevelopment

PRIORITY 4 – Water Street South Segment (Railroad Street to Main Street)

- Acquire/Plan/Design/Construct Water Street South Segment



EAST DUNDEE

Riverfront Master Plan