

Delta Magazine

Winter 2022
www.deltami.gov ■ 323-8500

I AM  DELTA



Supervisor Kenneth R. Fletcher
KFletcher@deltami.gov



Clerk Mary R. Clark
MClark@deltami.gov



Treasurer Dennis R. Fedewa
DFedewa@deltami.gov



Trustee Elizabeth (Beth) S. Bowen
BBowen@deltami.gov



Trustee Fonda J. Brewer
FBrewer@deltami.gov



Trustee Andrea M. Cascarilla
ACascarilla@deltami.gov



Trustee Karen J. Mojica
KMojica@deltami.gov

From the Township Board

We hope all residents had a good 2021 and are looking forward to 2022. As a Township, we work hard to balance and maintain economic growth, good jobs, and quality of life.

Strategic Planning

Last Fall, the Delta Township Board adopted an updated Strategic Plan focusing on three key areas over the next five years to provide a solid foundation on which the Township will continue to build an intentional and prosperous future for our residents. The three focus areas include:

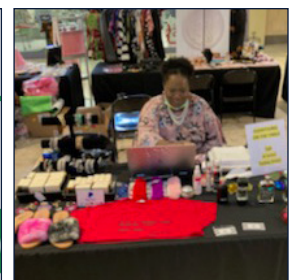
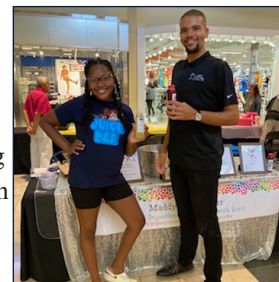
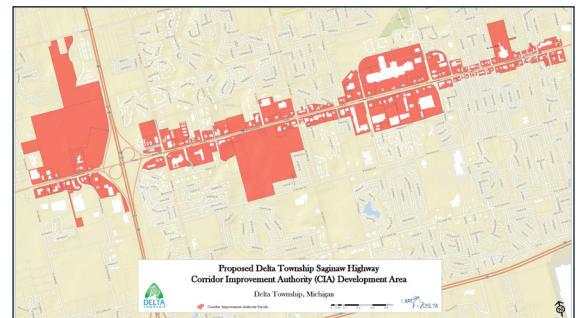
- **Community Vitality** - maintaining and improving strong connections with community partners, residents, and employees and providing a clean, healthy community environment where people are safe and enjoy access to amenities that support a high quality of life by delivering efficient and effective services to all populations in Delta.
- **Community Connectiveness** – encouraging a diverse, inclusive, and vibrant environment, helping to make and keep our community a great place to live, work and play.
- **Infrastructure** - delivering high quality municipal services with the greatest value for its residents, businesses, and visitors by creating a healthy, sustainable community, and by maintaining and improving the Township's infrastructure.

You can view the full strategic plan on our website at www.deltami.gov. Economic development is one of the vitally important components of strategic planning for the Township. Over the past couple of years, many of these economic development efforts have come to fruition and are beginning to take shape here before us.

Economic Development Efforts

The Township Board established the Delta Township Saginaw Highway Corridor Improvement Authority (CIA) to focus on the reinvestment and improvement of the Saginaw Highway corridor. Over the next year or two, you will find many opportunities to provide input into this process as we envision the future. This is made possible by one of the largest developments in the region in recent history. Delta Crossings is a \$200 million investment into the Township including new restaurants, retail, housing, and more. The CIA is supporting this project through tax increment financing and leveraging some of the new tax growth for planning and improvements for the rest of the corridor, which runs from Broadbent Road to Waverly Road. You can learn more at www.deltami.gov/cia.

In addition, we continue to facilitate large new investments into the Township, with expansions from Meijer, Auto Owners, Farm Bureau, Redwood Apartments, and the new one-million square foot Amazon warehouse currently under construction at Mount Hope Hwy. and Creyts Rd. Even with these larger developments we continue to support and spotlight the numerous small businesses throughout the Township with events such as the pop-up shop at Lansing Mall, Business Resource events, Restaurant Week, and more. Whether you are a large corporation or a small business, Delta is a great place to thrive.





IN THIS ISSUE:

- 2 Letter from the Board
- 3 Table of Contents
- 4 Senior Adult Recreation (50+)
- 6 Aquatic Programs
- 7 Special Events
- 8 Youth and Adult Enrichment Classes
- 10 Athletics - Youth and Adult
- 12 Library Programs and Information
- 13 Community Awards Recap
- 14 Election Information
- 16 Safety Tips from Delta Fire
- 18 Did You Know
- 20 Utility Department Information
- 21 Stormwater Management
- 23 Recycling Information
- 24 Township Locations and Addresses



DELTA TOWNSHIP DEPARTMENT DIRECTORY

ACCOUNTING/TREASURER DEPARTMENT	323-8510
Water/Sewer Bills	
Tax Collections	
ASSESSING DEPARTMENT	323-8520
Property Information/Assessed Valuations	
Weed Ordinance Enforcement	
BUILDING DEPARTMENT	323-8530
Building, Electrical, Mechanical, Plumbing, Remodeling Permits	
Sewer Capital Charges	
Code Enforcement	
Sign Permits	
CLERK'S OFFICE	323-8500
Board of Trustee Information	
Voter Registration and Elections	
Passports	
Recycling	
Cemetery Lots	
EATON COUNTY SHERIFF/DELTA PATROL	323-8480
Emergency: 911	372-8217
Non-Emergency	
ENGINEERING DEPARTMENT	323-8540
Sanitary Sewer and Water Location Information	
FIRE DEPARTMENT	321-6622
Emergency: 911	
Burning Permits	
Fire Code Inspections	
LIBRARY	321-4014
Books, Magazines, and Audio Books	
Movies and Music	
MANAGER'S OFFICE	323-8590
Administration, Budget, Human Resources	
Information Technology	
FOIA Requests	
PARKS, RECREATION & CEMETERIES DEPT.	323-8555
Athletics and Special Events	
Community Education Classes	
Park Shelters and Ball Fields	
Facility Reservations	
39'ERS AND AQUATICS OFFICE	484-5600
50+ Programs (Senior Citizens Programs)	
Aquatics	
PLANNING DEPARTMENT	323-8560
Zoning Ordinance Enforcement	
New Developments	
Planning Commission	
Economic Development	
UTILITIES DEPARTMENT	323-8570
After-Hours Emergency	323-8570
Water/Sewer Problems	

senior adult recreation

The Delta 39'ers is for people ages 50 and over. There is no residency requirements and no membership fees or dues.

The Delta 39'ers are in the Delta Enrichment Center located at 4538 Elizabeth Road, Lansing, 48917. Classes are held in the Enrichment Center unless otherwise noted.

The Delta 39'ers office hours are Monday-Friday, 10 a.m. to 3 p.m., the phone number is 484-5600.

The Delta 39'ers office will be closed and there will be no Delta 39'ers activities on 1/17.

Delta 39'ers Weather Policy

If Waverly Community Schools are closed due to weather, then all Delta 39'ers activities, classes, and events (except trips) are also cancelled. The activities, classes, and events will be rescheduled when possible.

Delta 39'ers Registration

Begins on **Tu, 1/4, at 8 a.m.**

Registration is required for activities, classes, events, and trips (unless noted with an *). Register at any time before deadline for trips.

Delta 39'ers Newsletter

Want to receive our newsletter? Call our office with your mailing address or email address and we will add you to our newsletter list.

Delta 39'ers Gift Certificates

We offer gift certificates in a variety of denominations. They can be used for trips, classes, footcare, and chair massage. A great gift for any occasion.

Fitness & Exercise Classes

Arthritis Exercise*

Improve strength, flexibility, and range of motion. Exercises can be done in a seated/standing position. 2nd & 4th W, ongoing, 1-1:45 p.m., \$2 drop-in fee per class, Room 304

Jazzercise For Seniors*

Build balance and flexibility. Tone your whole body. All fitness levels. Tu/Th, ongoing, 3:30-4:15 p.m., \$28 (8 classes/paid monthly) or \$5 drop-in fee, register in class, Community Center, Upper Level

Senior Barre Fitness

Full-body workout with ballet-based movements, weight conditioning, core-focused exercise, and stretching by emphasizing precision, and form. Please wear soft-soled shoes. Bring a Pilates ring to class. M/W, 1/10-2/21 (no class 1/17), 11:30 a.m.-12:15 p.m., \$48 (12 classes), SR1720a, M/W, 3/2-3/30, 11:30 a.m.-12:15 p.m., \$36 (9 classes), SR1720b, Community Center, Upper Level

Senior Core and More

Focusing on abdominal muscles and lower back. Develop strength, balance, flexibility, and joint stability. Beginners welcome. Bring a mat, a small FitBall, an exercise band, water, and towel. Optional a pair of weights (1 or 2 lb). M/W/F, 1/10-2/4 (no class 1/17), 9:30-10:15 a.m., \$44 (11 classes), SR1721a, M/W/F, 2/7-3/4 (no class 2/23-2/28), 9:30-10:15 a.m., \$36 (9 classes), SR1721b, M/W/F, 3/7-4/1, 9:30-10:15 a.m., \$48 (12 classes), SR1721c, Community Center, Upper Level

Tai Chi

Tai Chi Qigong Shibashi

Easy and beginning class in which you will learn the movements. Th, 1/20-3/10, 10:10-11:10 a.m., \$48 (8 classes), SR1701, Room 303

Tai Chi Beginning

Putting the movements from Qigong into flowing rhythmic patterns. Th, 1/20-3/10, 11:15 a.m.-12:15 p.m., \$48 (8 classes), SR1702, Room 303

Yoga* – All Levels

Gentle yoga which includes stretching and strengthening. Tu, 10-11 a.m., Room 304 W, 10-11 a.m., Room 304 Th, 10-11 a.m., Room 304 F, 10-11 a.m., Room 303 \$2 drop-in fee per class

Zumba Gold

Dance-fitness workouts specifically designed for the active older adult. M/W/F, 1/10-2/4 (no class 1/17), 10:30-11:15 a.m., \$44 (11 classes), SR1717a M/W/F, 2/7-3/4 (no class 2/23-2/28), 10:30-11:15 a.m., \$36 (9 classes), SR1717b M/W/F, 3/7-4/1, 10:30-11:15 a.m., \$48 (12 classes), SR1717c Community Center, Upper Level

Pacers Walking Club*

Walk daily year-round. Sign up by logging your miles in the Food Court. Monthly newsletters with information on activities and events. Mall opens at 10 a.m. for walkers, Free, Lansing Mall (Food Court)

Treadmill*

M-F, 10 a.m.-3 p.m., Free

Library*

Books and jigsaw puzzles are available. We have a take one, leave one system.

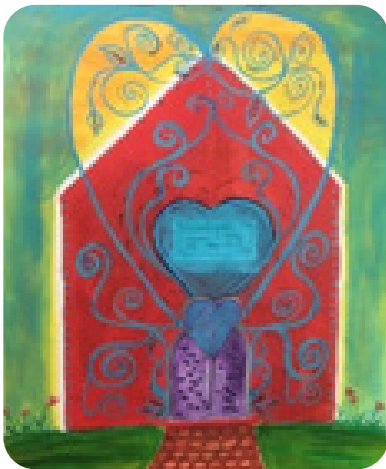
Classes

Genealogy

Getting started, the resources, and how to preserve your information.
 Tu, 1/18-3/8, 1-3 p.m., \$32
 (8 classes), SR1723, Room 302
 Tu, 1/18-3/8, 6-8 p.m., \$32
 (8 classes), SR1724, Room 302

House of the Heart Painting Class

If you are willing to transform the Old Story into a New Story, where you create a sense of Belonging within you that you can access at any time, then join us for the House of the Heart painting class.
 (Supply fee included)
 Th, 3/3, 3/10, & 3/17, 10:30 a.m.-1 p.m., \$28 (3 classes), SR1759, Room 302



Intro to Creative Writing

Learn or improve techniques for translating imagination to the written page. Nurture existing ideas. Discover new ones. All writing levels welcome.
 (Supply fee included)
 W, 1/19-3/9, 3-5 p.m., \$77
 (8 classes), SR1756a, Room 302
 W, 1/19-3/9, 6-8 p.m., \$77
 (8 classes), SR1756b, Room 302

Learn To Crochet – All Levels

Basics, learn techniques, and troubleshoot current/new projects.
 F, 1/7-2/11, 10:15 a.m.-12:15 p.m., \$24 (6 classes), SR1747a,
 F, 2/18-3/25, 10:15 a.m.-12:15 p.m., \$24 (6 classes), SR1747b,
 Room 304

Learn To Knit – All Levels

Basics, learn techniques, and troubleshoot current/new projects.
 M, 1/10-2/21 (no class 1/17), 10:15 a.m.-12:15 p.m., \$24 (6 classes), SR1745a,
 M, 2/28-3/28, 10:15 a.m.-12:15 p.m., \$20 (5 classes), SR1745b,
 Room 304

No Fear Computer Class - Basics

Learn computer skills, the internet, and email.
 W, 1/19-3/9, 1-2:30 p.m., Free
 (8 classes), SR1705a1, Room 301

No Fear Computer Class - Beyond The Basics

Learn computer skills, the internet, email, plus a simple intro to Windows 11.
 W, 1/19-3/9, 3-4:30 p.m., Free
 (8 classes), SR1705a2, Room 301

Health Services

Alzheimer & Dementia Caregiver Support Group*

This group is for the caregivers, and it offers support, education, and problem solving.
 1st W, 11 a.m.-12 p.m., Free,
 Room 302

Alzheimer Male Caregiver Support Group*

This group is for the male caregivers and offers support, education, problem solving, and guest speakers.
 3rd W, 10 a.m.-12 p.m., Free,
 Room 302

Chair Massage

A 20-minute chair massage.
 2nd & 4th W. Call for an appointment. \$12

Foot Care

Includes: Toenail cutting, foot bath, and foot massage. Minor calluses and rough areas. Corns are a medical procedure therefore this procedure is not performed.
 Tu, Four days a month. Call for an appointment. \$30

Cards & Games*

Drop-in only. No partner needed.
 Room 300 (except Bingo which is in the Activity Room)

Bingo*

M/W/F, 1-3 p.m., \$1,

Bridge (Social/Contract)*

M, 1-4 p.m., \$1.50

Cribbage*

W, 1-3 p.m., \$1.50

Euchre*

M, 6-9 p.m., \$1.50
 Th, 6-9 p.m., \$3

Mahjong*

2nd & 4th F, 12-3 p.m., \$.50

Pinochle*

Tu, 11:30 a.m.-3 p.m., \$1.50

Scrabble*

Th, 1-3 p.m., \$.50

Luncheons

Lunch

Come and join us for lunch. Reservations are required and must be called in by noon the business day before you want to attend. Call for a menu/reservations.
 M/W/F, 11:45 a.m.-12:45 p.m., \$3.50 suggested donation for ages 60+, \$6 charge ages 59 & under.

aquatic programs

The Delta Enrichment Center (4538 Elizabeth Road) is home to the Aquatics Office. The pool is located at Waverly East Intermediate School (3131 West Michigan Avenue) use Door #14 on SE corner of school.

You may purchase punch cards:

- 1- At the Delta Aquatics Office, located inside the Delta Enrichment Center. Office hours are Monday-Friday, 10 a.m.-3 p.m. Cash, checks, and debit/credit cards are accepted.
- 2- On the pool deck with a check (made payable to: Delta Township); sorry no cash or credit cards are accepted on the pool deck.
- 3- Over the phone at 484-5600. Visa, MasterCard, Discover, and American Express are accepted. Phone orders will be delivered to the pool twice a week. Refunds will not be issued for new or partially used punch cards.

For up to the date protocols visit the aquatics page on the Delta Township website. www.deltami.gov

Adult Water Exercise

Ages 18+

The exercise classes listed are each 45 minutes long, ongoing, and can be joined at any time. Participants do not need to be swimmers to participate. Your first visit to one water exercise class (of your choice) is free! \$55 for 10 visits w/punch card: age 54 and under \$50 for 10 visits w/punch card: age 55 and over \$7 per person drop-in fee

Arthritis Foundation Aquacise

See Adult Water Exercise for prices.
M/W/F, 11-11:45 a.m.

Arthritis Plus Foundation Aquacise

See Adult Water Exercise for prices.
Tu/Th, 11-11:45 a.m.

Splash Aerobics

See Adult Water Exercise for prices.
Tu/Th, 9-9:45 a.m.
M/W/F, 10-10:45 a.m.

Deep Water Aerobics

See Adult Water Exercise for prices.
M/W/F, 9-9:45 a.m.
T/Th, 10-10:45 a.m.

Lap/Open/Family Swim

\$35 for 10 visits with punch card or
\$4 per person, per visit drop-in fee

Lap Swim

Ages 18+
M-F, 12-1 p.m.

Adult Open Swim

Ages 18+, M/W/F, 3:30-4:45 p.m.

An adult must remain in attendance during family swims and open swim for children. In the event that the Waverly Schools are closed due to inclement weather, all pool activities are also cancelled. Information on possible closings can be obtained by calling 484-9322. No street shoes are allowed on the pool deck. Swimmers must shower before use. Infants must wear a swim diaper (not a regular diaper) in the pool. No persons over the age of 5 are allowed in opposite gender locker rooms.

Classes and program times may change without notice. Please check the aquatics page at www.deltami.gov/parks for up-to-date information.

Swim Lesson Registration

Check the website for swim lesson information later this year. Look for the aquatics page at www.deltami.gov/parks

Delta Township is always looking for certified lifeguards, water aerobics instructors and swim lesson instructors. Contact the aquatics office to apply or for more information.

The pool will be closed on the following dates:

December 23, 2021-January 2, 2022
Monday, January 17, 2022
Friday, April 15, 2022
Monday, May 30, 2022



special events

Easter Bunny Meet & Greet

The Easter Bunny will be visiting Delta Township for a meet and greet with area children. Don't forget to bring your camera to get a picture of your child with the Easter Bunny. Children will also have the opportunity to participate in a Easter craft. No need to register in advance. Sponsored by the Delta Township Parks and Recreation Department.

W, 4/13, 6-7 p.m.

Delta Township Enrichment Center

Free



Pint-Sized Picassos – Parent Participation

Let us provide the materials and clean-up while your child provides the creativity. There will be a couple different projects each week. We will use different types of paints, crayons, glue, collage materials, and more. The easels will also be available every week for the children to use. No need to register in advance.

Th, 1/20-2/10, 10-11 a.m., Ages 2-5, \$1 per child per week, Room 301 in the Enrichment Center

Daddy Daughter Dance

Dance to your favorite music in the elegant surroundings of the Crowne Plaza Lansing West Hotel. You will also enjoy refreshments, a corsage for the lady, photographs, and more. The dance is open to all young ladies and the adult male of their choice. Dinner is on your own. If you would like to eat at Bordeaux in the hotel you must call them for reservations at 391-1307.

M, 2/7, 7-9 p.m.

No refunds after 2/4

Mother Daughter Dance

Dance to your favorite music, enjoy refreshments, and leave at the end of the evening with a photo and a special surprise for the young lady. The dance is open to all young ladies and the adult female of their choice.

M, 4/25, 7-9 p.m.

No refunds after 4/22

\$10 per person (Delta Township resident)

\$12 per person (non-residents)

Crowne Plaza Lansing West Hotel



\$10 per person (Delta Township residents)

\$12 per person (non-residents)

Crowne Plaza Lansing West Hotel

Mother Son Dance

Dance to your favorite music, enjoy refreshments, and leave at the end of the evening with a photo and a special surprise for the young man. The dance is open to all young men and the adult female of their choice.

M, 3/14, 7-9 p.m.

No refunds after 3/11

\$10 per person (Delta Township resident)

\$12 per person (non-residents)

Crowne Plaza Lansing West Hotel



How to Register for the Dances

Register online at www.deltami.gov/registration or call 323-8555. Register now as space is limited. Please do not call the hotel except to make dinner reservations. **Please note dinner is not included in the fee for the dance.** If you would like to dine at Bordeaux, the hotel's restaurant, reservations can be made by calling 391-1307. Payment for dinner must be made at the restaurant at the time of dinner.



enrichment classes

Adult Classes

Flow Yoga

M, 6-6:45 p.m.
1/24-3/28
\$75 Res/\$85 Non-Res
\$8 Drop-In Available Online
Enrichment Center, Room 304

Jazzercise

Tu/Th, 5:45-6:45 p.m.
Ongoing, 1/4-3/31
\$59/month
Community Center, Upper Floor
Call Sandy for info. 517-285-0066

Jazzercise LO

Tu/Th, 9:30-10:30 a.m.
Ongoing, 1/4-3/31
\$59/month
Community Center, Upper Floor
Call Sandy for info. 517-285-0066

Karate for Adults (15+)

Tu, 7:30-9 p.m.
Session 1: 1/18-3/22
\$50/individual
Session 2: 4/5-5/24
\$40/individual
Community Center, Lower Floor

Pilates – Monday

M, 5:30-6:15 p.m.
1/24-3/28
No Class 2/28
\$50 Res/\$59 Non-Res
Enrichment Center, Room 303

Pilates, Ballet and Barre Fitness

Th, 5:15-6 p.m.
1/20-3/31
No Class 2/24
\$55 Res/\$65 Non-Res
Enrichment Center, Room 303

Strength, Flexibility, and Core

W, 5:30-6:15 p.m.
1/19-3/30
No Class 2/23
\$55 Res/\$65 Non-Res
Community Center, Upper Floor

TRX Suspension Training

Th, 7-7:45 p.m.
Session 1: 1/20-2/17
Session 2: 3/3-3/31
\$33 Res/\$38 Non-Res
Community Center, Lower Floor

Zumba – Monday

M, 6:30-7:30 p.m.
1/24-3/28
No Class 2/28
\$58 Res/\$67 Non-Res
Enrichment Center, Room 303

Zumba – Thursday

Th, 6:15-7:15 p.m.
1/20-3/31
No Class 2/24
\$65 Res/\$75 Non-Res
Enrichment Center, Room 303

Zumba Toning and Abs

W, 6:30-7:30 p.m.
1/19-3/30
No Class 2/23
\$65 Res/\$75 Non-Res
Community Center,
Upper Floor



Youth/Family Classes

Karate – Youth

(Ages 6-14)
Tu, 6:30-7:30 p.m. or 7:30-8:30 p.m.
Session 1: 1/18-3/22
\$40/individual
Session 2: 4/5-5/24
\$30/individual
Community Center, Lower Floor

Karate for Families

Tu, 6:30-7:30 p.m. or 7:30-8:30 p.m.
Session 1: 1/18-3/22
\$70/family
Session 2: 4/5-5/24
\$60/family
Community Center, Lower Floor

Little Road Warriors – Learn to Bike

(Ages 2-5)
W, 2/2-2/23, 10:30-11 a.m.
\$12 Res/\$16 Non-Res
Community Center, Lower Level

Pint Sized Picassos

(Ages 2-5)
Th, 10-11 a.m.
1/20-2/10
\$1 per child (drop-in fee)
No Pre-Registration
Enrichment Center, Room 301

Class Registration

The first day to register for classes is Tuesday, January 4 starting at 8 a.m. To register online please visit www.deltami.gov/registration or by phone call 323-8555. For more information or for full class description please visit www.deltami.gov or call 323-8555.

Rental Facilities

Looking for a place to have that family party or special event? The Delta Township Parks & Recreation Department has both parks and indoor facilities for rent. Reservations for the parks will begin the first business day of each year and the Joseph E. Drolett Community Center can be reserved up to two years in advance and the Enrichment Center can be reserved up to one year in advance. Please call 323-8555 for availability and more information.

PROGRAM	AGE(S)	DAY(S)	TIME(S)	DATE(S)	COST
Dance with Me (EC Rm 304)	18mo-3	M	9:10-9:55 a.m.	1/24-2/29	\$55 Res/\$60 Non-Res
Dance with Me (EC Rm 304)	18mo-3	M	10-10:45 a.m.	1/24-2/29	\$55 Res/\$60 Non-Res
Dance with Me (EC Rm 304)	18mo-3	M	9:10-9:55 a.m.	3/7-5/9 No Class 3/28 & 4/4	\$60 Res/\$65 Non-Res
Dance with Me (EC Rm 304)	18mo-3	M	10-10:45 a.m.	3/7-5/9 No Class 3/28 & 4/4	\$60 Res/\$65 Non-Res
Creative Dance 1 (EC Rm 304)	3-4	Tu	4:20-4:50 p.m.	1/11-3/1	\$60 Res/\$65 Non-Res
Creative Dance 1 (EC Rm 303)	3-4	Sa	9:05-9:35 a.m.	1/15-3/5	\$60 Res/\$65 Non-Res
Creative Dance 1 (EC Rm 303)	3-4	Tu	4:20-4:50 p.m.	3/8-5/10 No Class 3/29 & 4/5	\$60 Res/\$65 Non-Res
Creative Dance 1 (EC Rm 304)	3-4	Sa	9:05-9:35 a.m.	3/12-5/14 No Class 4/2 & 4/9	\$60 Res/\$65 Non-Res
Creative Dance 2 (EC Rm 303)	4-5	Tu	4:15-4:55 p.m.	1/11-3/1	\$60 Res/\$65 Non-Res
Creative Dance 2 (EC Rm 304)	4-5	Sa	9:15-9:55 a.m.	1/15-3/5	\$60 Res/\$65 Non-Res
Creative Dance 2 (EC Rm 304)	4-5	Tu	4:15-4:55 p.m.	3/8-5/10 No Class 3/29 & 4/5	\$60 Res/\$65 Non-Res
Creative Dance 2 (EC Rm 304)	4-5	Sa	9:15-9:55 a.m.	3/12-5/14 No Class 4/2 & 4/9	\$60 Res/\$65 Non-Res
Intro Tap/Jazz (EC Rm 303)	5-6	Tu	5-5:45 p.m.	1/11-5/10 No Class 3/29 & 4/5	*\$140 Res/\$150 Non-Res*
Tap 1 (EC Rm 303)	7-10	Tu	5:50-6:35 p.m.	1/11-5/10 No Class 3/29 & 4/5	*\$140 Res/\$150 Non-Res*
Jazz 1 (EC Rm 304)	7-10	Tu	5-5:45 p.m.	1/11-5/10 No Class 3/29 & 4/5	*\$140 Res/\$150 Non-Res*
Jazz 2&3 (EC Rm 303)	9-13	Th	7:40-8:35 p.m.	1/13-5/12 No Class 3/31 & 4/7	*\$150 Res/\$160 Non-Res*
Intro Ballet/Contemp (EC Rm 304)	5-6	Th	6-6:45 p.m.	1/13-5/12 No Class 3/31 & 4/7	*\$150 Res/\$160 Non-Res*
Intro Ballet/Contemp (EC Rm 304)	5-6	Sa	10-10:45 a.m.	1/15-5/14 No Class 4/2 & 4/9	*\$140 Res/\$150 Non-Res*
Ballet 1 (EC Rm 304)	7-10	Th	6:50-7:35 p.m.	1/13-5/12 No Class 3/31 & 4/7	*\$140 Res/\$150 Non-Res*
Ballet 2&3 (EC Rm 303)	9-13	Tu	6:40-7:35 p.m.	1/11-5/10 No Class 3/29 & 4/5	*\$150 Res/\$160 Non-Res*
Contemporary 1 (EC Rm 304)	7-10	Tu	5:50-6:35 p.m.	1/11-5/10 No Class 3/29 & 4/5	*\$150 Res/\$160 Non-Res*
Contemporary 2&3 (EC Rm 304)	9-13	Tu	6:40-7:35 p.m.	1/11-5/10 No Class 3/29 & 4/5	*\$150 Res/\$160 Non-Res*
Musical Theatre 1 (EC Rm 304)	7-10	Th	4:25-5:10 p.m.	1/13-5/12 No Class 3/31 & 4/7	*\$140 Res/\$150 Non-Res*
Musical Theatre 2&3 (EC Rm 304)	9-13	Th	5:10-5:55 p.m.	1/13-5/12 No Class 3/31 & 4/7	*\$140 Res/\$150 Non-Res*
**Children's Dance Company	6-13			Next Session	Aug '22-May '23

All dance classes held at the Delta Township Enrichment Center at 4538 Elizabeth Rd.

Class fee can be paid in 2 installments/**Children's Dance Company is by audition/invitation only. Audition is held Aug '22

All class dates, times, and locations are subject to change

sports programs

For all athletic program details and online registration links, please visit each sports link on our township website at https://www.deltami.gov/departments/parks_recreation/athletic_programs/index.php

Youth Athletics

Delta's youth athletic programs are recreational in nature. Each program will introduce the child to the basic skills of that sport while stressing the fundamentals and fun of the game.

Youth Spring Soccer

Micro Leagues – Ages 4, and 5/6.
Traditional Leagues – Ages 5/6, 7/8, 9/10, and 11-13.

Games will be played on Saturdays for 6 weeks at Mount Hope Park. Practices will start the week of 4/18/22.

Registration Deadline: F, 4/1/22
Age: 4-13 as of 4/30/22
Dates: Week of 4/30/22 - 6/11/22
Fee: \$40/Res.; \$45/Non-Res.
\$10 late fee after 4/1/22, if space permits (late fees are not refundable)
\$15 for athletic jersey if needed

Itty Bitty Kickers 3-year-olds

Practices and games will be held on Saturdays within a 50-minute time block. 4x4 rules and a size 3 ball will be used. The program starts 4/30/22 and runs on Saturdays for 5 weeks.
Registration Deadline: F, 4/1/22
Age: 3 as of 4/30/22
Dates: Week of 4/30/22-6/4/22
Fee: \$30 Res/\$35 Non-Res
\$10 late fee after 4/1/22, if space permits (late fees are not refundable)
\$15 for athletic jersey if needed

Youth T-Ball

4-year-old League
(Mondays & Wednesdays)
5/6-year-old League
(Tuesdays & Thursdays)
The program starts the week of 6/20/22 and runs for 6 weeks at Mount Hope Park.
Deadline: F, 6/3/22
Age: 4, 5-6 as of 6/20/22
Fee: \$40 Res/\$45 Non-Res
\$10 late fee after 6/3/22 if space permits (late fees are not refundable)
\$15 for athletic jersey if needed

Delta will be joining the Mason Pony League in 2022

NEW – Coed Baseball

Delta will have one (1) team entered in the U8, U9 and U10 “blue” divisions. This is a more competitive league than the traditional Delta programs, but it is still classified as a “recreational” level. The season will be 12 games (6 Home at Mount Hope Park, and 6 Away) from early May through early July. Teams will have practice times during the week along with their game schedule. Jerseys (shirts) and hats will be provided. All other uniform needs are to be purchased by the participants. Delta will provide team equipment (bats, helmets, catchers gear, balls). More info can be found at www.mmplbaseball.com. Depending on registration numbers, tryouts may be necessary.
Deadline: F, 3/11/22
Age: 7-10 as of 4/30/22
Fee: \$85 per player
More league info will be distributed once teams have been created.

Youth Basketball Camp

High intensity, multi-tasking drills will be used to increase mental and physical speed of play. Basketball University will supply the instructors and equipment. No refunds after 5/3/22.
Deadline: 5/3/22
Camp Dates: 5/4, 5/11, 5/18, 5/25
Grade/Time:
1st/2nd – 5:45 p.m.
3rd/4th – 6:45 p.m.
5th/6th – 7:45 p.m.
Fee: \$40/Res.; \$45/Non-Res.
Location: Waverly East Gymnasium

Court One Group Tennis Lessons

6-Week Sessions
Session 1: 1/3/22-2/13/22
Session 2: 2/14/22-3/26/22
Session 3: 4/4/22-5/15/22
Session 4: 5/16/22-6/10/22
Grades/Fees/Times
K-2nd Grade (\$113)
Monday: 5:30-6:30 p.m.
3rd-4th Grade (\$113)
Tuesday: 5:30-6:30 p.m.
Saturday: 9-10 a.m.
4th-5th Grade (\$119)
Wednesday: 5:30-6:30 p.m.
Saturday: 10-11 a.m.
Middle School (\$119)
Thursday: 6:30-7:30 p.m.
Saturday: 11 a.m.-12 p.m.
9th-12th Grade (\$119)
Tuesday: 8-9 p.m.
Saturday: 12-1 p.m.

Contact Shelly Kindig to register:
517-908-3225 or Kindig.shelly@courtone.com



Adult Athletics Summer Adult Softball Leagues

Leagues Offered:

Men Dbl- 20 games: M, Tu, Th

Men (40+) Dbl- 20 games: Su

Coed Dbl- 20 games: W

Coed Single- 10 games: Th

Locations: Erickson Park, Sharp Park or Delta Mills Park

Season Begins: Week of April 25, 2022 and runs for 10 weeks.

Team Registration: The sponsor fee is due at the time of registration. Sponsor fees are not refundable unless another team is found as a replacement. Only full-team registrations are accepted.

Early Bird Team Registration:

2/28/22 – 3/4/22

Get your team in to a Delta Township league at a special early bird rate! Limited spots available. Teams are taken on a first come, first served basis. Registrations turned in AFTER 3/4/22 will pay "Regular Team Registration" Fees.

Early Bird Sponsor Fees:

Men's Doubleheader – \$240

Coed Doubleheader – \$280

Coed Single – \$180

Regular Team Registration:

3/7/22 – 3/25/22

Limited spots available. Teams are taken on a first come, first served basis. Registrations turned in AFTER 3/25/22 will pay "Late Team Registration" Fees.

Regular Sponsor Fees:

Men's Doubleheader – \$290

Coed Doubleheader – \$330

Coed Single – \$230

Late Team Registration:

3/28/22 – 4/1/22

If leagues are not already full, we will accept registrations until April 1, 2022.

No team registrations will be accepted after 4/1/22.

Late Sponsor Fees:

Men's Doubleheader – \$340

Coed Doubleheader – \$380

Coed Single – \$280

Player Fees: All players are required to pay a \$15 player fee for every team they play on.

Umpire Fees: (per team/per game)

Men's Doubleheader – 2 umpires \$20/game, \$400/season

Coed Doubleheader – 1 umpire \$15/game, \$300/season

Coed Single – 1 umpire

\$15/game, \$150/season

Coed Kickball Leagues

Do you miss those fun games of kickball? Are you looking to get together and have fun with your friends? Then sign up now and join our Adult Co-ed Kickball League! For league rules and registration form please visit our website www.deltami.gov/parks.

Deadline: F,

4/8/22

Leagues: M or W

Season Begins: M,

4/25/22 or

W, 4/27/22

Fee: \$150/team

(10 games)

Location: Sharp

Park and Delta

Mills Park

Coed Sand Volleyball Leagues

Leagues are 4 vs 4 – coed rules apply (2 males, 2 females). Teams provide their own volleyball. Limited spots available. Teams are taken on a first come, first served basis. For league rules and registration form please visit our website www.deltami.gov/parks.

Deadline: F, 7/1/22

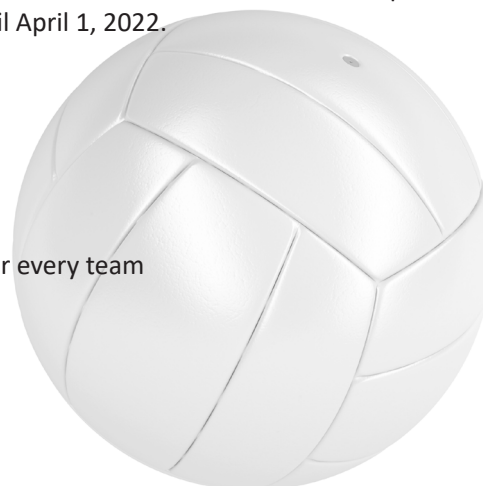
Leagues: W

Season Begins: W, 7/13/22

(Length of season determined by number of teams)

Fee: \$100/team

Location: Sharp Park



Register by visiting www.deltami.gov/registration • 323-8555

library information

Stream Movies with Kanopy

Beginning January 1, DTDL cardholders can now stream thousands of films with Kanopy, including critically-acclaimed movies, documentaries, foreign films, classic cinema, independent films, children's shows, and more. Learn more at dtdl.org/kanopy.

Expungement Help

Get a guided tour of the expungement process from DTDL staff, including the steps involved, navigating the application process at michiganlegalhelp.org, and connecting with a lawyer for legal advice. One-on-one appointments can be scheduled at any time. Visit dtdl.org/expungement or call 321-4014 x4 for more information. Expungement resource packets are also available for pickup at the Adult Services desk.

Launchpad Tablets for Kids

DTDL has a new collection of Playaway Launchpads for checkout. These pre-loaded tablets are curated with collections of learning apps, stories, and videos that will keep kids engaged and excited to learn. Find them by the youth audiobooks or visit the library's catalog.

@ Your Service

Get a personal tour guide for your new device, delve into our online collections, or chat with us about your next great read! Our personalized tech help appointments will teach you all you need to know to thrive in the digital world. One-on-one appointments can be scheduled at any time. Visit dtdl.org/@

Take It & Make It

Looking for fun crafty activities for you or your kids? DTDL offers free Take It & Make It kits for youth and adults that can be picked up in the library or with our carside service. Visit dtdl.org/make-it.

cloudLibrary Mobile Checkout

Skip the checkout line and borrow library items right from your phone. Download the cloudLibrary app, scan the barcodes of the items you want to borrow, and then check out within the app. Use the app to store virtual library cards, manage checkouts, and more. Visit dtdl.org/mobilecheckout.

Tutor.com

Tutor.com is free with your DTDL card and provides on-demand tutoring, homework help, test preparation and writing assistance for students in grades K-Adult in over 60 subjects. Tutors are available 2 pm-9 pm, 7 days a week. Visit dtdl.org/tutor.

321-4014 • www.dtdl.org

Battle of the Books 2022

Our 14th annual program will include a mix of virtual events, at-home activities, and an in-person battle, with engaging reads, fun activities, and friendly competition. Form a team, read the books, and compete in trivia battles. Open to kids in fourth grade & up, teens, and adults. Learn more and register at dtdl.org/battle.

Winter Wonder Challenge

From January 1-31, choose from a variety of winter bucket list activities for all ages, including reading suggestions, indoor games, and outdoor fun. Log your activities on Beanstack and enter to win a Target gift card. Visit dtdl.beanstack.org to get started.

Winter 2022 Programs

See some highlights below and visit dtdl.org/events for a full schedule and to register for programs.

Adult Programs

Books and Brews – First Tuesdays, 7-8 p.m. at EagleMonk
Virtual Book Chat - Third Wednesdays, 6-7:30 p.m.
Scrapbooking Club – Second Wednesdays, 3-4 p.m.
Color Me Calm – Sundays, 12-3 p.m.

Spark Joy Webinar with Shannon Huneycutt
Thursday, January 13, 7-8:30 p.m.

Learn the KonMarie philosophy needed to tidy once and for all and leave feeling motivated to Spark Joy in your home, office, and life! Registration required.

Short Story Writing Contest – February-March
Enter our short story writing contest! Visit dtdl.org for events and details.

Youth Programs

Virtual Playgroup – Wednesdays, 10:30 a.m.
Virtual PJ Storytime – Second Thursdays, 6 p.m.
Paws for Reading – Second Saturdays, 10:30-11:30 a.m.
Virtual STEAM Saturdays – Fourth Saturdays, 10:30 a.m.
Virtual Tween Book Club – Third Wednesdays, 4:30 p.m.
Tween Game Night – Friday, March 18, 5:30-7:30 p.m.
Teen Game Night – Friday, January 21, 5:30-7:30 p.m.
MiLibraryQuest – February 1-March 15
Grades 6-12 can enter this online scavenger hunt from libraries across Michigan. Find clues, solve the mystery, enter to win! Visit dtdl.org/milibraryquest.

For more information about any of the library's services and programs, visit dtdl.org or call 517-321-4014.

community awards

Delta Township hosted the 15th Annual Delta Township Community Awards Event on October 28 at the Crowne Plaza Lansing West. Nearly 200 people gathered to celebrate the outstanding individuals, businesses, and organizations that were honored during the event.

The Township presented five awards this year including Citizen of the Year, Young Person of the Year, Business of the Year, and two Community Enhancement Awards. The Young Person of the Year recipient was also presented with a \$2,000 Scholarship sponsored by the Delta Side Business Association.

The Citizen of the Year Award was presented to Father John Klein. Fr. John Klein served for 24 years as the pastor of St. Gerard Church. During his tenure, Fr. Klein sought to serve not only the members of his congregation but the Delta Township community at large. Under his leadership, St. Gerard hosted community holiday dinners on major holidays so that no person in the community was alone or hungry; he even offered transportation to the events; and during the pandemic, he instituted meal deliveries to ensure those in need would not go hungry. Fr. Klein also implemented a program to assist families in need over the Christmas holiday by providing toys, books, and clothing to children, to ensure that every child felt the love and miracle of the holiday, and the families felt the support of their community. Under Fr. Klein, St. Gerard began the Kids Hope USA program to send mentors into public schools to help children who are in need of caring, reliable, one-on-one relationships. Supporting his mission to care for and lead the citizens in

Delta Township, Fr. Klein's work is simply done as an act of love for the community.

The Young Person of the Year Award was presented to Lindsey Zarka. Lindsey Zarka is a senior at Grand Ledge High School and was nominated for her dedication and excellence in academics, the arts, and volunteerism. Lindsey is a member of the Grand Ledge Archery Team where she received a perfect score enabling her to compete in the Nationals later this year. Additionally, Lindsey is a member of the National Honor Society and the yearbook staff. Academically, Lindsey is among the top in her class and has a thirst for learning. She is also a gifted artist and was invited to participate in the Kendall College of Art program last year. Her work was so impressive, that she was invited back again this year to continue her studies in the program.

The Business of the Year Award was presented to Moneyball Sportswear. For the last eight years, Moneyball Sportswear has led efforts to bring quality athletic events to Delta Township. These events have brought thousands of players, fans, and families to Delta Township and the surrounding areas. adding to Delta Township's economy by producing hotel accommodations, restaurants visits, and exposing residents and visitors to the many amenities the Township has to offer. Moneyball Sportswear has worked with the Delta Township Parks & Recreation Department and the Greater Lansing Sports

Authority and proceeds raised from these events have assisted Moneyball Sportswear in its commitment to building stronger communities by offering free basketball camps. More specifically, proceeds from the Moneyball 3 on 3 Basketball Tournament have benefitted the Moneyball Foundation and the Delta Township Parks & Recreation Scholarship program.

Two Community Enhancement Awards were given to the following recipients:

Granger Mall is currently owned by Sam Frangie and Sam Makhoul who bought the plaza in 2018. Originally built in the early 60s the building was desperately in need of a new roof and updates. In January 2020, they replaced the roof and built a new facade, with future plans to improve the parking lot.

Righter's Auto Repair opened its Delta Township location in 2020. The redevelopment of the former Tuffy garage included nearly \$1.2 million dollars in reinvestment into the building, equipment, parking lot, and more. This business was also a recipient of a Delta Economic Development Façade Improvement grant to assist in the cost of the improvements.

Congratulations to all of this year's nominees and recipients.



Pictured (L to R): Clerk Mary R. Clark, Supervisor Kenneth R. Fletcher, Business of the Year recipients Celia Ferguson and Desmond Ferguson Jr. with Moneyball Sportswear; Community Enhancement Award recipient Sam Frangie with Granger Mall; Young Person of the Year Lindsey Zarka; and Citizen of the Year Father John Klein. Photography provided by: StudioM Portraits

election information

2022 Scheduled Elections

May 3, 2022 – Special Election
(Filing Deadline - February 8, 2022)
Voter Registration Deadline – Election Day – 8 p.m., Tuesday, May 3, 2022

If residents will be out of the community on Election Day or need any information regarding the upcoming election, contact the Township Clerk's Office at 323-8500.

August 2, 2022 – Primary Election
(Filing Deadline – April 19, 2022)
Voter Registration Deadline – Election Day – 8 p.m., Tuesday, August 2, 2022

If residents will be out of the community on Election Day or need any information regarding the upcoming election, contact the Township Clerk's Office at 323-8500.

November 8, 2022 – General Election
(Filing Deadline – August 16, 2022)
Voter Registration Deadline – Election Day – 8 p.m., Tuesday, November 8, 2022

If residents will be out of the community on Election Day or need any information regarding the upcoming election, contact the Township Clerk's Office at 323-8500.

Census & Re-Districting – NEW 2022

The 2020 census has been completed and boundary lines are being redrawn for federal, state, county, and local jurisdiction precinct boundaries. Boundaries are redrawn in Michigan based on population from the 2020 census information collected. Now that the redistricting process is nearing the final stage, new voter identification

cards will be mailed to all registered voters within Delta Township. It is expected the new voter identification cards will be mailed late spring of 2022 and will reflect new precinct polling location. These new precincts will be in effect for the August 2, 2022, Primary Election. Look for more details and information on the Delta Township website at www.deltami.gov.

New Rights for Michigan Voters – Registering to Vote through Election Day

The constitutional amendment passed in 2018 brought about the following changes for Michigan Voters for voter registration and voting by absent voter ballot:

Registering to Vote up to 15 days prior to Election:

Register to vote at:

- Any Secretary of State branch office
- Your township, city, or county clerk's office
- A designated state agency
- By Mail
- Online through Secretary of States Office.

Register to Vote – 14 days before election and including Election Day (Same Day Registration):

Register to vote at:

- Voter must appear in person at the Delta Township Clerk's Office during regular business hours and up until 8 p.m. on Election Day. Residency and identification verification are required. Documents must have your name and current Delta Township address. Digital copies are acceptable.
- Additional weekend hours will be available the weekends prior to each scheduled election. Contact the Delta Township Clerk's Office at 323-8500 for additional information.

Can I register to vote at my polling precinct on Election Day?

No, if you are not registered on Election Day, you must register to vote at the Delta Township Clerk's Office in person. However, when a voter registers on Election Day at the Delta Township Clerk's Office, a voter has the choice to either vote by absentee ballot at the Clerk's Office, or to take their registration receipt to their polling precinct on Election Day and vote until close of polls at 8 p.m.

For any questions regarding voter registration or elections, please contact the Clerk's Office at 323-8500. Visit the Secretary of State website for additional election information at www.michigan.gov/vote or the Delta Township website at www.deltami.gov.

New Rights for Michigan Voters – Voting by Absentee Ballot

The constitutional amendment passed in 2018 made significant changes to Michigan Election Law regarding who can vote by absentee ballot in any scheduled election. All REGISTERED VOTERS are eligible to receive an absentee ballot upon request. A "reason" is no longer required.

How do I get an absentee ballot?

Voters are required by Michigan Election law to submit a written request for an absentee ballot for every election they intend on voting by absentee ballot. If a voter has requested an absentee ballot, the Township Clerk will first mail the voter an application for an absentee ballot. A request in the form of an application for absent voter ballot or written request from voter must be on file with the Clerk's Office with the following information: voter's

name, residential address, where to mail the ballot (if different than registered voter address), date of the election, signature of the voter, phone number, email, and birthdate. An application for an absentee ballot can be found online at www.michigan.gov/vote. A printed application can be returned by mail, by email at deltatwp21520@deltami.gov, in person to Delta Township Clerk's Office, or at the drop box on east side of building or drive-up night deposit box on the north side of Township Administration Building. Once the application or written request for an absentee ballot has been received the ballot will be mailed to voter as soon as ballots are available. Ballots are required to be available 40 days prior to election by law.

Automatic Permanent Absent Voter Application List

Delta Township maintains a list of voters who automatically are mailed an application for an absentee ballot for all elections scheduled in Delta Township. A voter can request to be placed on the "automatic absent voter application list". Once an application is returned and ballots are available, the ballot will be mailed to voter. Voter can vote ballot in comfort of their home and then return ballot in any of the methods listed above.

To be placed on our Automatic Absent Voter List please call the Clerk's Office Monday-Friday 8 a.m.-5 p.m. at 323-8500. If you would like to sign up electronically go to the Delta Township website at www.deltami.gov. Select the Government heading at the top of the page and then select Elections and Voter Registration. From the list that displays, select "Automatic Absent Voter List Request". Complete the form on-line and an application for an absent voter ballot will be generated and mailed to the voter prior to each election scheduled in Delta Township.

Military and Overseas Voter Empowerment Act ("MOVE Act")

The MOVE Act as signed into federal law affords all active uniformed service, spouse, dependents, and merchant marine, stationed inside or outside the United States and civilians residing indefinitely or temporarily overseas the option of requesting an "electronic" transmitted, faxed or mailed absentee ballot. The voter must submit a written request or utilize the FPCA form requesting ballot every calendar year (January 1-December 31) and must be filled out in its entirety. The FPCA completed form can be utilized to register to vote and/or apply for absentee ballot and can be emailed to deltatwp21520@deltami.gov or faxed to 323-8599 to the attention of the Clerk's Office. For your convenience, the FPCA form used for this request is available at our website at www.deltami.gov. Additional information including contact information for Michigan's city and township clerks, sample ballots for you to view for upcoming election or candidate and proposal information can be viewed through the Michigan Voter Information Center (MVIC) Web site maintained by the Michigan Department of State at www.michigan.gov/vote.

Picture ID Requirement When Voting in Michigan

Michigan voters who vote at the polls and absent voter ballot in person requests must comply with the requirement of showing picture identification. The most common sources of picture identification are your driver's license or a state ID card. The following forms of picture identification may also be used if they are current:

- Federal or state government-issued photo identification (Driver's license or state identification card

from any state).

- U.S. passport
- Military ID card with photo
- Student ID card with photo from high school or an accredited institution of higher education
- Tribal ID card with photo.

Voters without picture

identification: Currently Michigan election law anticipates that not all voters will have picture identification. Voters who do not bring picture identification to the polls or do not possess picture identification can vote like any other votes by signing an affidavit of voter not in possession of identification.

Election Worker Recruitment

Delta Township is seeking election workers for the following positions: electronic pollbook inspectors, help desk inspectors, general inspectors, absent voter counting board inspector, absent voter counting board, and chairs in training to work elections. Election dates in 2022 are May 3, August 2, and November 8. All positions are paid positions. Chairpersons are paid \$18/hour, Chairs in Training are paid \$15/hour, and Help Desk Inspector, Electronic Poll Book Inspector and General Inspectors are paid \$12/hour. All required training is paid at the hourly rate applicable for the position you are hired for. To qualify to work in Delta Township, an individual must be a registered voter within state of Michigan, have no felony convictions, complete an application, and attend mandatory training prior to every election. The positions require applicants to be available for long hours on Election Day. If interested, please contact the Delta Township Clerk's Office at 323-8500 or stop by the office to complete an application at 7710 West Saginaw Highway, Lansing, MI.

s a f e t y t i p s



Home Fire Safety Checklist: Simple Changes That Could Save Your Life

Change your smoke detector batteries. Replace old batteries with fresh, high quality batteries to keep your smoke detector working yearlong. After inserting a fresh battery in your smoke detector, check to make sure that the smoke detector is working by pushing the safety test button.

Count your smoke detectors. Install at least one smoke detector on every level of your home including the kitchen, basement, family room and, most importantly, outside of every bedroom.

Vacuum your smoke detectors. Each month, clean your smoke detector of dust and cobwebs to ensure their sensitivity.

Change your flashlight batteries. Keep working flashlights near your bed, in the kitchen, basement and family room. Use it to signal for help in the event of a fire. To make sure your emergency flashlights work when you need them, use high quality alkaline batteries.

Install fire extinguishers. The IAFC recommends a multi- or all-purpose fire extinguisher that is listed by an accredited testing laboratory such as Underwriters Laboratory. Know how to use it before an emergency happens.

Plan and practice your escape. Create at least two different escape routes and practice them with the entire family. Children are at double the risk of dying in a home fire because they often become scared and confused during fires. Make sure your children understand that a

smoke alarm signals a home fire and that they recognize its alarm.

The Life You Save May Be Your Own

Have you noticed the fire hydrant nearest your home? Is it partially (or even fully) obstructed by snow or other debris? The Delta Township Fire Department is asking all residents and businesses to take a look at their nearest fire hydrant and ensure that it is clear three feet in each direction. In case of a fire, firefighters need immediate access to the hydrant for water supply. Any obstruction, including snow may cause a delay when firefighters try to get water to extinguish a fire. If there is a delay in obtaining water, someone may be injured or even killed because water is not available as soon as possible. Remember – the life you save may be your own.

When Is Ice Safe?

The simple answer is never; no ice is safe ice. This is the message that the Coast Guard advocates. The reality is that people will be on the ice for a variety of recreation opportunities including fishing, snowmobiling, skating and skiing. The Michigan DNR does not measure ice thickness and there is no reliable “inch-thickness” to determine if ice is safe. Your safety is your responsibility!

Guidelines

Test ice thickness and quality using a spud, needle bar or auger.

Strongest ice: Clear with bluish tint.

Weak ice: ice formed by melted and refrozen snow. Appears milky.

Tools You'll Need

- Spud: Long-shank with a chisel-like end that's used to chip a hole in the

ice. Use this when the ice isn't too thick.

- Auger: Corkscrew-like device with a cutting blade that operates like a hand drill to make a hole in the ice.
- Lifejacket
- Ice picks/claws
- Two-way communication device (Make sure it receives a signal)!

Ice Covered by Snow:

- Should always be considered unsafe.
- Snow acts like an insulating blanket and slows freezing process.
- Ice under snow is thin and weak.
- A recent snowfall can melt existing ice.

Caution:

- Stay off ice with slush on top. Slush ice is only half as strong as clear ice and indicates the ice is not freezing from the bottom.
- A sudden cold front with low temperatures can create cracks within a half-day.
- A warm spell may take several days to weaken ice and cause the ice to thaw during the day and re-freeze at night.

Ice weakens with age.

If there's ice on the lake but water around the shoreline, be extra cautious. The stronger the current on the lake, the more likely the ice will give to open water.

Avoid areas of ice with protruding debris like logs or brush.

If You Do Break Through the Ice:

- Remain calm
- Don't remove winter clothing. Heavy clothes won't drag you down, but instead help provide warmth.
- Turn in the water toward the direction you came from, this is most

likely the strongest ice.

- If you have ice picks, dig the points of the picks into the ice while vigorously kicking your feet to pull yourself onto the surface by sliding forward on the ice
- Roll away from the area of weak ice.
- Rolling on the ice will distribute your weight to help avoid breaking through again.
- Get to shelter and remove your wet clothing, redressing in warm, dry clothing and consume warm, non-alcoholic, non-caffeinated beverages as soon as you can.
- Call 911 and seek medical attention if you feel disoriented, have uncontrollable shivering or have any other ill effects that may be symptoms of hypothermia, which is a life-threatening condition.

Courtesy of the Michigan Department of Natural Resources

Winter Hazards Awareness Week is Nov. 7-13

To prepare your home for winter:

- Weatherproof your home by installing weather stripping and caulking and insulating walls, doors and windows.
- Insulate any water lines that run along exterior walls, so pipes are less likely to freeze.
- Lock in a propane rate now and have a backup heating plan, such as a generator, wood stove or fireplace.
- Have gas or oil furnaces inspected by a qualified professional and change the air filter every two to four months.
- Have your fireplace and chimney cleaned and inspected. Contact your local fire department for a referral or look for a local inspector online.
- Install battery operated carbon monoxide (CO) detectors near sleeping areas. CO poisoning is more common in the winter months when furnaces are turned on and portable generators are often used for electricity during power outages.

- Clean gutters to prevent ice dams from forming. Roof ice dams can cause water to build up, leading to interior damage.
- Clear storm drains along the curb to enable water to drain. If plugged, water has the potential to go into low-lying areas and flood basements.
- Have an emergency preparedness kit stored safely in your house that includes water, nonperishable food, a first aid kit, extra batteries, a battery or hand-crank powered radio, emergency lighting or flashlights, extra blankets and warm clothing.

To prepare your vehicle for winter:

- Have your radiator system serviced, replace windshield wipers and refill wiper fluid.
- Replace any worn tires and check air pressure regularly.
- Have your brakes, brake fluid, oil, car battery, heater and exhaust checked to make sure everything is running efficiently.
- Keep an emergency preparedness kit in your vehicle stocked with batteries, battery powered or hand-crank radio, flashlight, windshield scraper, jumper cables, mobile phone charger, shovel, blankets, first aid kit, non-perishable food and bottled water in the event you get stranded or stuck.

In support of statewide winter preparedness efforts, Gov. Gretchen Whitmer has proclaimed Nov. 7-13 as Winter Hazards Awareness Week. For more tips, go to www.michigan.gov/miready or follow the MSP/EM-HSD on Twitter at @MichEMHS.

A Clearly Marked Address May Save Your Life

Imagine yourself responsible for providing life-saving aid in the event of a heart attack. You are dispatched to an address, 6421 East Saginaw Highway. You recognize the street name and know how to get the gen-

eral vicinity of the call. Seconds could mean the difference between life or death. You turn the ambulance onto the street and start checking for the right address numbers. You pass one house, no numbers, you pass another, no numbers, and finally the fourth house has a number, 6459. You've gone past the house....somewhere behind you there is a person dying from a heart attack.

This scenario is played over and over again every day across America! A house that is on fire with smoke visible from the street is easy enough to find, but someone with a life-threatening injury or illness, inside a home or in the backyard, may be harder to find than most of us realize. Take the time and properly mark your home and mailbox. Some simple steps that can be taken to help the timely arrival of emergency personnel are:

- Place block style numbers on the house, visible from the roadway.
- The numbers should be a minimum 4 inches tall for residential, 6 inches tall for commercial.
- The numbers should be in direct color contrast to their background.
- The numbers should be under or near exterior lighting to help make them visible at night.
- Place the address numbers on both sides of your mailbox.
- Use reflective numbers to increase nighttime visibility.
- If possible, send someone out to the curb to flag down emergency personnel.
- If possible, at night have someone turn the front porch lights on and off to signal emergency personnel.

No one expects or wants an event requiring emergency personnel to happen to them, but last year alone Delta Fire and EMS responded to thousands of calls. This year one of those may be to your house.

did you know?

2021 Tax Payments

Winter 2021 taxes are due on **Monday, February 14, 2022**. Last year, a large snow storm occurred on the winter tax due date. There was also a large thunderstorm on the summer 2021 tax due date. Please consider submitting your payment well in advance of the day it is due, to avoid unforeseen circumstances that result in a late payment. Interest and penalty charges that are incurred for late payments cannot be waived. Real property taxes are turned over to Eaton County for collection on March 1, 2022.

To ensure your winter tax payment is made on time, consider scheduling an ACH payment. The Township will schedule the payment to be paid from your bank account on the due date (you can choose either December 31 or February 14). Sign up for this free service at <https://www.deltami.gov/residents/e-services/index.php> (Autopay-Tax) or by calling 323-8510.



Delta Patrol Winter Driving Safety Tips

DON'T BLAME THE WEATHER! DRIVE SLOW ON ICE & SNOW



Most winter driving crashes are not caused by the weather, but by drivers' failure to adjust to road conditions. "Drive slow on ice & snow" is the theme for our winter driving safety program, and our #1 tip for staying safe on wintry roads. Here's why:

- Most winter driving crashes can be attributed to drivers going too fast for the roadway conditions. When this happens, drivers can lose control, leave their lane, or even leave the roadway.
- On snowy and/or icy roads, it can take up to ten times longer to stop your vehicle. Slowing down and allowing more room between your vehicle and the one ahead of you gives you more time to react and brake, thus reducing your crash risk.
- Michigan speed limit laws require drivers to move at a speed that is "reasonable and proper" for the road conditions. This means that even if you are driving at or under the posted speed limit, you could still get a speeding ticket if the road conditions make that speed unreasonable for safe driving.
- By making adjustments in speed and handling when road conditions are bad, you can take charge of your winter driving safety.
- Don't use cruise control on ice and snow. If your car skids, the cruise control will accelerate to maintain a constant speed — spinning your wheels even faster and increasing the chance you will lose control of your vehicle

With the Holiday Season approaching, Delta Patrol offers these Tips for Crime Prevention when out Shopping:

- Always be aware of your surroundings and stay alert.
- Don't keep packages and bags in plain view in a vehicle. Put them in the trunk or cover with a blanket.
- Use a buddy system while shopping.
- Purses should be carried close to the body and wallets should be in front pocket.

Do you Shop Online? Here's More to Keep in Mind:

- Only shop on websites you know and trust.
- Determine if a website is secure by check the URL. It should begin with 'https,' not just "http".
- Review bank and credit card statements frequently to look for fraudulent charges.
- Beware of emails offering cut-rate prices on popular items. If the offer sounds too good to be true, it probably is.



Should You be Paying City Income Tax?

With income tax time rapidly approaching, Delta Township wants to eliminate some of the confusion residents have regarding the issue of the City of Lansing income tax. Delta Township does not have an income tax. Some Delta residents with a Lansing address may believe they owe city income tax; or, more frequently, their employer may have withheld city income tax over the year.

Many times, an employer will automatically withhold taxes when the address is Lansing. A Lansing address relates only to the United States Postal authorities for delivering mail. A Lansing address may mean that a person lives in Delta Township and therefore is not subject to city income tax. Persons living within the City of Lansing pay a one percent tax, no matter where they work. Delta residents that work in the City of Lansing, pay one-half percent income tax.

The following businesses located in Delta Township are subject to city income tax because of a 425 Agreement with the City of Lansing: GM-Delta Manufacturing Complex, located on Millett Highway, 7009 W. Mt. Hope – Amazon Warehouse (formerly YanFeng), 2369 S Canal - Bridgewater Interiors, L.L.C., and 2051 S Canal - Avancez (formerly Android).

Delta residents that live and work in Delta Township do not pay income tax other than working at the businesses listed above.

Residents that are registered to vote in Delta Township or pay their water and sewer bill to Delta Township are Delta Township residents.

If residents discover that their employer withheld City of Lansing income taxes in error, simply contact the Clerk's office and they will provide the employer with proper identification. If you have any questions regarding whether you are a Delta Township resident, please contact the Clerk's office and they will be happy to assist you, 323-8500.

Delta Charter Township – Serving your Community on a Board or Commission

Throughout the year, the Delta Township Board appoints residents, interested in serving their community to various boards and commissions. Those boards and commissions include the Library Board; Planning Commission; Zoning/Sign Board of Appeals; Economic Development Corporation; Parks, Recreation & Cemeteries Commission; Complaint Review Committee; Mechanical & Building/Property Maintenance Board of Appeals; Plumbing Board of Appeals; Electrical Board of Appeals; Fire Board of Appeals; Tax Board of Review, Corridor Improvement Authority, and Board of Water & Light Representative. Please note some positions require specific skills or Delta Township residency.

The Delta Township Clerk's Office accepts applications from citizens who wish to be considered to serve on township boards or commissions. If you are interested in becoming more active in your community, please call the Clerk's Office at 323-8500 to request an application.

Passport Drives

The Delta Township Clerk's Office accepts passport applications during regular office hours Monday-Friday by appointment only year around. If you are planning travel in 2022 it is recommended applicants apply 4 to 6 months prior to travel dates.

The Delta Township Clerk's Office will be offering several dates with extended hours passport drives during 2022. The Delta Township Clerk's Office will be open extended hours on the following dates for the acceptance of passport applications (Form DS-11 ONLY):

2022 Passport Drives

Tuesday, January 4 – 5-7 p.m.
 Wednesday, February 2 – 5-7 p.m.
 Thursday, March 3 – 5-7 p.m.
 Monday, April 4 – 5-7 p.m.
 Thursday, May 5 – 5-7 p.m.
 Wednesday, June 1 – 5-7 p.m.
 Thursday, July 7 – 5-7 p.m.
 Thursday, August 4 – 5-7 p.m.
 Tuesday, September 6 – 5-7 p.m.

Please visit the U.S. Department of State website for documentation requirements, fees, and applications at www.travel.state.gov. Two payments will be required: (1) Payable to U.S. Department of State for processing of your passport and must be in the form of a personal check or money order payable to the U.S. Department of State and (2) Payable to Delta Township for the acceptance fee (\$35) and picture (\$12 if purchased through Delta Township). One official passport quality photo taken within six months of application is required when submitting a passport application (Form DS-11 ONLY) and can be obtained at the Clerk's Office. The fee(s) due to Delta Township can be by cash, check or credit/debit card. For questions or further information please call the Delta Township Clerk's Office at 323-8500.

utilities information

Protect Water Pipes & Your Water Meter

Cold winter weather can cause water pipes and water meters in areas such as crawlspaces, garages and basements to freeze if not protected. HOMEOWNERS ARE RESPONSIBLE TO PROTECT WATER METERS FROM FREEZING.

We recommend that you KEEP THE HEAT ON at a level that is sufficient to protect pipes and meters from freezing. As the cold winds shift direction, be aware that cold air could enter a small crack in a foundation, window, or opening in the siding possibly causing pipes and/or water meters to freeze. If you are gone for a period of time, you may want to have someone check periodically to be sure the heat source is still working throughout the cold weather.

If pipes and/or the water meter are built into a cabinet, you may want to leave the access doors to the cabinet open during extreme cold spells to allow enough heat to circulate around the meter. If pipes are in an outside wall, special care needs to be taken to ensure that rooms next to the pipes are kept warm enough to radiate heat through the walls to keep these pipes from freezing.

Pipes and meters that are not in heated areas, such as in garages and under mobile homes, will also need protection from the cold. Often insulation and heat tapes are wrapped around them to keep them from freezing. Be sure to follow manufacturer's instructions when installing heat tapes. Check heat tapes often to be sure they are plugged in and working properly.

Some of our water customers prefer to winterize their homes rather than leave heat on.

The Township will upon your request turn the water off to your home at the street in the fall and back on in the spring at a cost of \$25.

Customers who chose to winterize their homes need to blow the water out of all pipes using a compressor that does not leave an oil residue, aka a breathable air compressor. In addition, these customers need to pull and empty all of the water out of the water meter inside the house. However, the pipe from the meter to the street still holds water and may still be subject to freezing and splitting. Opening the valve inside the home will allow some of the remaining water to evaporate. Be aware that any buildings that sit through the Michigan winter months without heat are subject to drawing moisture that can cause problems when this moisture freezes during the extreme cold months.



A Device With A Purpose

The Delta Township Utility Department has installed remote readers to collect readings for billing purposes since 2011. These crème colored plastic boxes (see photo below) are attached to the outside of customer homes. These devices have the name SENSUS on the front surface. The Utility Department is currently working on installing blue tags on these devices that are labeled "Delta Twp Water Dept". Each remote reader is wired directly to the water meter located inside customer homes to obtain the meter readings. It is common to have contractors discard these devices while doing work or upgrades to the outside surface of the home. It is the customer's responsibility to ensure contractors do not damage or discard these devices. The replacement cost for damaged or missing devices is the responsibility of the customer or property owner.

Any customer that needs to temporarily remove the remote reader due to exterior work being done to the home, please contact the Utility Department for assistance in the removal and subsequent reattachment once work is completed. If you notice the wire running from the reader to the meter is cut or damaged, please contact the Utilities Department to schedule a time for one of the Utility Servicemen to repair the device. If you have any questions regarding this device, please contact the Utility Department at (517)323-8570.



For more information visit www.deltami.gov or call 323-8570

protect our waters



PROTECT OUR WATERS STOP THE SALT ASSAULT

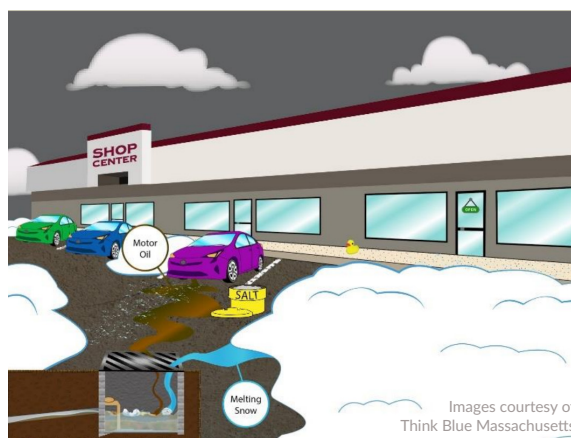
De-icing salt dissolves in melted snow and ice, flows into storm drains, and is discharged into our rivers and streams (not a treatment plant). This saline water threatens drinking water supplies and aquatic ecosystems. By adopting these practices, business owners can reduce their contribution to salt pollution.

DO



- Keep storm drains, catch basins, and stormwater structures clear of snow, litter, grass, and leaves. They can clog these structures.
- Use only as much salt is needed to match site conditions.
- Shovel or plow thoroughly prior to salting.
- Purchase eco-friendly salt alternatives.
- Use a salt brine rather than rock salt.

DON'T



- Don't leave salt and ice melt uncovered or open to rain and snow.
- Avoid spreading clumps
- Don't dump grease or oil into a storm drain, catch basin, or other stormwater structure.

WHY IS THIS NECESSARY?

Rain that falls on and around your site can pick up trash, dirt, and chemical residue as it drains away. Much of this water, or stormwater, flows into storm drains before discharging directly into our lakes, rivers, and streams. It's one of the top causes of water pollution in the country. By keeping pollution off the ground, you prevent it from entering and impacting our waterways.

Business owners can do their part to keep Michigan's waterways clean.
Find more tips like these at www.MyWatersheds.org.

SIX TIPS TO STAY STORMWATER SMART IN THE SNOW



SHOVEL

Shovel snow onto vegetated areas. Grass and plants will act as a natural filter as the snow melts, reducing runoff into stormdrains that lead directly to rivers and streams.

PLAN AHEAD

Shovel and scrape trafficked areas early and often. De-icers work best when there is only a thin layer to remove.



USE LESS

A little bit of salt goes a long way! Apply de-icers sparingly and remove slush once the snow melts to prevent refreezing.

RECYCLE

Save money by sweeping or vacuuming salt solids for re-use after the storm!



STORE

Practice good housekeeping by storing de-icers under a roof or other cover to minimize polluted runoff.

WINTERIZE

Winterize your vehicles to ensure there are no leaks. Avoid washing the car in the driveway to keep dirty water out of the storm sewer.



recycling programs

Delta Township Recycling Center

5717 Millett Highway

Winter Hours: November-March

Tuesdays – 8 a.m.-4 p.m.

Wednesdays – 12-6 p.m.

Saturdays – 8 a.m.-4 p.m.

Closed Holidays

The Recycling Center will be closed December 25, 2021

January 1, April 16, May 28,
July 2, September 3,
November 26, and
December 24, 2022

*Residential Use Only -
No Commercial*

Electronics Recycling

Delta Township offers events for electronics and freon recycling. A fee of \$.50 per pound will be charged for electronics and a fee of \$20 each will be charged for freon containing items. Examples of electronics include micro-waves, PCs, laptops, servers, printers, copiers, scanners, LCD screens, plasma/LED/flat screens, CRT monitors, CRT televisions, projections, monitor/televisions, cell phones, answering machines, and remote controlled items. A new collaboration with the Eaton County Resource Recovery will allow for monthly events. Collection of these items will take place between 9 a.m. and 1 p.m. on the following dates: January 15, February 19, March 19, April 23, May 21, June 18, July 16, August 13, September 17, October 29, November 19, and December 17. A fee of \$30 will be charged for the recycling of carbon monoxide and smoke detectors. For questions or more information, please call the Clerk's Office at 323-8500.

Christmas Tree Recycling

Delta Township residents may dispose of their natural Christmas trees **December 26 through January 31** at the Parks and Recreation Maintenance Building, which is located on Administration Drive. Please remove any Christmas lights, wires, string, and ornaments from the tree. If transporting the tree in a bag, please remove the tree from the bag before dropping it off. The trees will be chipped and used for various landscape projects around the township.



String Light Collection

December 15, 2021-January 31, 2022

Recycling available during regular hours of operation at the: Delta Township Administration Building and Delta Township Recycling Center. Available for string lights ONLY. Both LED and Non-LED string lights will be accepted. No other electrical or electronic items will be accepted.

Yard Waste – Not Accepted December-March

Yard waste is not accepted during the winter months of December through March. The yard waste bins at the recycling center are removed for the winter. Yard Waste Recycling will be accepted starting April 13, 2022.

Metals Accepted Year-Round

Below is a listing of metal items accepted year round at the Recycling Center. All items must be 80% metal or more to be accepted for recycling. The listing is not limited to the items below, but is a general listing. If you have a question regarding the acceptance of an item, please ask the recycling center attendant: appliances – washers, dryers, cook stoves, water heaters, water softeners, furnaces, steel dishwashers (no all plastic dishwashers), steel and aluminum lawn furniture or swing sets, lawn mowers, rototillers, weed whackers, spreaders (fluids must be drained), gas and charcoal grills, pots and pans, basketball poles (no cement), wire or metal fencing bundled, fence poles (no cement), metal cabinets and shelving, metal yard ornaments, steel doors and storm doors with glass removed, scrap metal, sheet metal, cast iron, metal sinks and metal burning barrels (must have open tops and be clean). NO GAS OR OIL CANS ARE ACCEPTED. Tin and aluminum cans (cleaned and flattened), as well as items mostly composed of metals will be accepted.

Acceptable Recycling Items

Delta Township's Recycling Center accepts the following products or materials to be recycled: cooking oil, polystyrene foam, household batteries (please tape the circuits on lithium, 9 volt and larger batteries), and cellular phones, ink cartridges, plastics with #1-7 symbol on bottom, metals, clear and colored glass, paper, boxboard, CFL bulbs, and phone books. Please remove all lids and caps from plastic containers prior to recycling. Pop or beer box containers, containers designed to go in the freezer or refrigerator, or plastic containers that hazardous waste comes in, such as motor oil or anti-freeze, are not accepted. For a complete listing of items accepted at the Delta Township Recycling Center and to obtain the monthly recycling newsletter visit www.deltami.gov.

For more information visit www.deltami.gov or call 323-8500

Delta Charter Township
7710 West Saginaw Highway
Lansing, MI 48917

RESIDENTIAL CUSTOMER

ECRWSS
PRSTD STD
U.S. Postage
PAID
Permit No. 718
Lansing, MI

**Delta Township
Administrative Offices**
7710 West Saginaw Highway
323-8500, 323-8599 (Fax)
Monday-Friday 8 a.m.-5 p.m.

**Waverly East
Intermediate Pool**
3131 West Michigan
(office located at the
Enrichment Center,
4538 Elizabeth Road)
484-5600
Monday-Friday 10 a.m.-3 p.m.

Hillside Cemetery
6415 Delta River Drive
Information: 323-8500

Delta Center Cemetery
7301 West St. Joe Highway
Information: 323-8500

Enrichment Center
4538 Elizabeth Road
484-5600
Rental Information: 323-8555

**Delta Township
District Library**
5130 Davenport Drive
321-4014
<http://www.dtdl.org/>
@deltatwplibrary



Recycling Center
5717 Millett Highway
Information: 323-8500

April 1-October 31
Tuesday 8 a.m.-4 p.m.
Wednesday 12-8 p.m.
Saturday 8 a.m.-4 p.m.

November 1-March 31
Tuesday 8 a.m.-4 p.m.
Wednesday 12-6 p.m.
Saturday 8 a.m.-4 p.m.

**Joseph E. Drolett
Community Center**
7550 West Willow Highway
Rental Information: 323-8555

Delta Fire Station #1
811 North Canal Road
321-6622 (Non-Emergency)
Monday-Friday 8 a.m.-5 p.m.

Delta Fire Station #2
7720 W. Grand River Ave.
Grand Ledge, MI 48837

Delta Fire Station #3
215 Snow Road

**Eaton County Sheriff/
Delta Patrol**
7708 Administration Drive
372-8217 (Non-Emergency)
Monday-Friday 8 a.m.-5 p.m.

EATRAN 371-3312 (Eaton Co.)

Anderson Park
3207 Wardell Road

Delta Mills Park
7001 Old River Trail

Erickson Park
4220 South Canal Road

Grand Woods Park
4500 West Willow Highway

Hawk Meadow Park
6160 Delta River Drive

**Hunter's Orchard
Park**
7242 Old River Trail

Lake Delta
3½ miles south of Saginaw
Highway on Canal Road

LeLand Park
½ mile west of Waverly on
St. Joe Highway

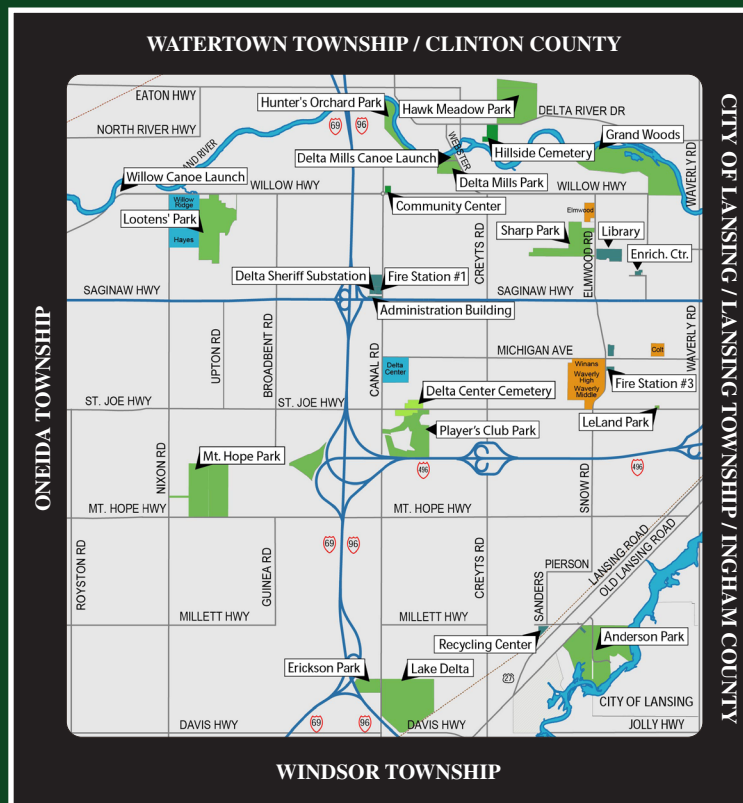
Lootens Park
East of Nixon Road on
Willow Highway

Mount Hope Park
7419 East Mt. Hope Highway
Grand Ledge

Player's Club
South of St. Joseph on Canal

Sharp Park
1401 Elmwood Road

Willow Canoe Launch
6507 Willow Highway
Grand Ledge



*For a department directory including phone numbers and an overview of responsibilities, please see page 3.
Unless specified, all addresses are Lansing, MI 48917.*