

# Delta Magazine

Fall 2022  
[www.deltami.gov](http://www.deltami.gov) ■ 323-8500



I AM  DELTA

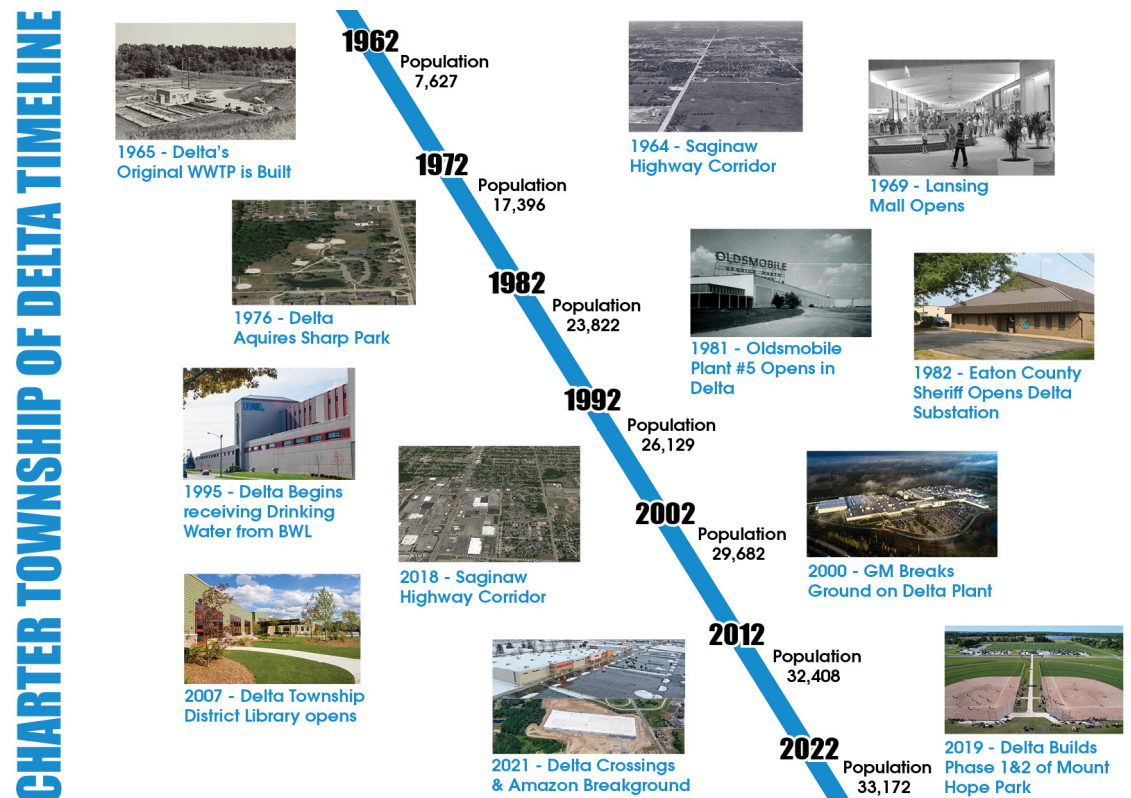
# From the Township Board

Delta Township's origins date back to 1835 - however, August 7, marked Delta Township's 60th Anniversary as a "Charter Township". As we look back, we honor the hard work of our early citizens who organized the successful campaign which resulted in Charter incorporation in 1962. In addition, we celebrate all our citizens, businesses, Township staff, and elected officials throughout the years who worked to preserve, enhance, and define our community.

Since 1962, the Township has grown immensely, from a rural farm community of just 7,627 people to a thriving suburban community of over 34,000 residents. Despite being a relatively young Charter Township, Delta Township has truly become a regional leader over the past 60 years, carving out its place among the top growing communities in the State. Delta Township has become a center for jobs including the building of the Lansing Region's First Meijer Store in 1963, the Lansing Mall in 1969 to the construction of the Oldsmobile Plant #5 in 1981, several parts plants and automotive-related industry, and the GM Lansing/Delta Township plant in 2000. In addition, Delta is home to the headquarters for Auto-Owners and Farm Bureau Insurance Companies, as well as critical Meijer distribution centers, and many hundreds of small businesses. Additionally, Delta is set to be the new home of Ultium Cells, LLC Battery Plant which broke ground in July.

Through it all, Delta continues to balance its quality of life, including providing excellent public safety through its police and fire, maintaining, and heavily investing in our water and sewer infrastructure, and adding to and enhancing our existing parks and pathway system utilizing our natural resources such as the Grand River. Delta is also home to many engaging community events that draw in people from across the Greater-Lansing region.

Today, we are proud that Delta Township is a prosperous, diverse, and ever-growing community. We continue to anticipate a future that appreciates the beauty of our natural environment, maintains the livability of our community, and embraces our active and involved residents. After 60 years of incorporation, we remain committed to making Delta a great place to live, work, and play, and to raise a family. Happy Anniversary Delta Township!



Supervisor Kenneth R. Fletcher  
KFletcher@deltami.gov



Clerk Mary R. Clark  
MClark@deltami.gov



Treasurer Dennis R. Fedewa  
DFedewa@deltami.gov



Trustee Elizabeth (Beth) S. Bowen  
BBowen@deltami.gov



Trustee Fonda J. Brewer  
FBrewer@deltami.gov



Trustee Andrea M. Cascarilla  
ACascarilla@deltami.gov



Trustee Karen J. Mojica  
KMojica@deltami.gov



**IN THIS ISSUE:**

- 2 Information from the Board
- 3 Table of Contents
- 4 Senior Adult Recreation (50+)
- 6 Aquatics - Pool Update
- 7 Special Events
- 8 Youth and Adult Enrichment Classes
- 10 Athletics - Youth and Adult
- 11 Fireworks Sponsors Thank You
- 12 Community Awards
- 13 Library Programs and Information
- 14 Safety Tips - Delta Fire & Eaton Co
- 16 Rental Facilities
- 17 Burning Permits/Taxes etc.
- 18 Election Information/Passports
- 21 Stormwater Information
- 23 Recycling Information
- 24 Township Locations and Addresses



**COVER IMAGE**

Fall Coed Youth Soccer at Mount Hope Park, 7419 East Mount Hope Highway. The park features softball diamonds, a large field that accomodates soccer, flag football, etc., a concession stand, shelter, playground, bathrooms, parking lots, and a walking path.

**DELTA TOWNSHIP  
DEPARTMENT DIRECTORY**

<b>ACCOUNTING/TREASURER DEPARTMENT</b>	323-8510
Water/Sewer Bills Tax Collections	
<b>ASSESSING DEPARTMENT</b>	323-8520
Property Information/Assessed Valuations Weed Ordinance Enforcement	
<b>BUILDING DEPARTMENT</b>	323-8530
Building, Electrical, Mechanical, Plumbing, Remodeling Permits Sewer Capital Charges Code Enforcement Sign Permits	
<b>CLERK'S OFFICE</b>	323-8500
Board of Trustee Information Voter Registration and Elections Passports Recycling Cemetery Lots	
<b>EATON COUNTY SHERIFF/DELTA PATROL</b>	323-8480
Emergency: 911	Non-Emergency 372-8217
<b>ENGINEERING DEPARTMENT</b>	323-8540
Sanitary Sewer and Water Location Information	
<b>FIRE DEPARTMENT</b>	321-6622
Emergency: 911 Burning Permits Fire Code Inspections	
<b>LIBRARY</b>	321-4014
Books, Magazines, and Audio Books Movies and Music	
<b>MANAGER'S OFFICE</b>	323-8590
Administration, Budget, Human Resources Information Technology FOIA Requests	
<b>PARKS, RECREATION &amp; CEMETERIES DEPT.</b>	323-8555
Athletics and Special Events Community Education Classes Park Shelters and Ball Fields Facility Reservations	
<b>39'ERS AND AQUATICS OFFICE</b>	484-5600
50+ Programs (Senior Citizens Programs) Aquatics	
<b>PLANNING DEPARTMENT</b>	323-8560
Zoning Ordinance Enforcement New Developments Planning Commission Economic Development	
<b>UTILITIES DEPARTMENT</b>	323-8570
After-Hours Emergency	323-8570
Water/Sewer Problems	

# senior adult recreation

The Delta 39'ers is for people ages 50 & over. No membership fees or residency requirements.

The Delta 39'ers are in the Delta Enrichment Center located at 4538 Elizabeth Road, Lansing, 48917. Classes are held in the Enrichment Center unless otherwise noted. The office hours are Monday-Friday, 10 a.m. to 3 p.m., the phone number is 517-484-5600. **The Delta 39'ers office will be closed and there will be no Delta 39'ers activities on 9/5, 11/24, 11/25, 12/23, & 12/26. All activities cancelled after 2:30 p.m. on 11/7 and all day 11/8.**

## Delta 39'ers Weather Policy

If Waverly Community Schools are closed due to weather, then all Delta 39'ers activities, classes, and events (except trips) are also cancelled. The activities, classes, and events will be rescheduled when possible.

## Delta 39'ers Registration

Begins on **Tuesday, August 30, at 8 a.m.** Registration is required for activities, classes, events, and trips (unless noted with an \*). Register at any time before deadline for trips.

## Delta 39'ers Program Guide

Want to receive our program guide? Call our office with your mailing address or email address and we will add you to our mailing list.

## Delta 39'ers Gift Certificates

We offer gift certificates in a variety of denominations. They can be used for trips, classes, footcare, and chair massage. A great gift for any occasion.

## Cards & Games\*

Drop-in. No partner needed. Room 300 (Bingo is in the Activity Room)

### Bingo\*

M/W/F, 1-3 p.m., \$1,

### Bridge (Social/Contract)\*

M, 1-4 p.m., \$1.50

### Cribbage\*

W, 1-3 p.m., \$1.50

### Double Pinochle\*

1st & 3rd F, 12-3 p.m., \$1.50

### Euchre\*

M, 6-9 p.m., \$1.50

Th, 6-9 p.m., \$3

### Mahjong\*

2nd & 4th F, 12-3 p.m., \$.50

### Pinochle\*

Tu, 11:30 a.m.-3 p.m., \$1.50

### Scrabble\*

M, 10 a.m.-12:30 p.m., \$.50

Th, 1-3 p.m., \$.50

## Classes

### Genealogy

Getting started, the resources, and how to preserve your information.

Tu, 9/13-11/1, 1-3 p.m., \$32

(8 classes), SR4723

Tu, 9/13-11/1, 6-8 p.m., \$32

(8 classes), SR4724, Room 302

### House of the Heart Painting Class

Is there an Old Story you've been telling about how you feel like the "odd" one in your family or the world? Are you ready to transform that story into a New Story? If so, join us in creating a new meaning of Belonging as we paint our House (Home) of the Heart. This Intentional Creativity class requires no artistic skill. (Supply fee included)

Th, 10/13, 10/20, & 10/27,

11 a.m.-1 p.m., \$28 (3 classes),

SR4759, Room 302

### Learn To Crochet – All Levels

Basics, learn techniques, and troubleshoot current/new projects.

F, 9/9-10/21, 10:15 a.m.-12:15 p.m.,

\$28 (7 classes), SR4747a,

F, 10/28-12/16,

10:15 a.m.-12:15 p.m., \$28

(7 classes), SR4747b, Room 302

### Learn To Knit – All Levels

Basics, learn techniques, and troubleshoot current/new projects.

M, 9/12-10/24,

10:15 a.m.-12:15 p.m., \$28

(7 classes), SR4745a

M, 10/31-12/12,

10:15 a.m.-12:15 p.m., \$28

(7 classes), SR4745b, Room 302

### No Fear Computer Class - Basics

Learn computer skills, the internet, and email.

W, 9/7-10/26, 1-2:30 p.m., Free

(8 classes), SR4705a1

W, 11/2-12/21, 1-2:30 p.m., Free

(8 classes), SR4705b1, Room 301

### No Fear Computer Class - Beyond The Basics

Learn computer skills, the internet, email, plus a simple intro to Windows 11.

W, 9/7-10/26, 3-4:30 p.m., Free

(8 classes), SR4705a2

W, 11/2-12/21, 3-4:30 p.m., Free

(8 classes), SR4705b2, Room 301



### Intro to Creative Writing – All Writing Levels

Learn or improve techniques for translating your voice to the written page. Nurture existing ideas. Discover new ones. (Supply fee included) M, 9/12-10/31, 6-8 p.m., \$93 (8 classes), SR4756a  
W, 9/14-11/2, 3-5 p.m., \$93 (8 classes), SR4756b, Room 302

### Soulful Story Cards

A workshop to shed light on old stories holding us back and give ourselves permission to create new stories, opening opportunities for insights and wisdom. The cards become signposts for moving forward with intention in living life more fully. This Intentional Creativity class requires no artistic skill. (Supply fee included)  
Th, 9/8, 9/15, & 9/22, 11 a.m.-1 p.m., \$28 (3 classes), SR4758, Room 302

### Health Services

#### Alzheimer & Dementia Caregiver Support Group\*

This group is for the caregivers, it offers support, education, and problem solving.  
1st W, 11 a.m.-12 p.m., Free, Room 302

#### Alzheimer Male Caregiver Support Group\*

This group is for male caregivers, it offers support, education, and problem solving.  
3rd W, 10 a.m.-12 p.m., Free, Room 302

#### Chair Massage

A 20-minute chair massage.  
2nd & 4th W. Call for an appt. \$12

#### Foot Care

Includes: Toenail cutting, foot bath, and foot massage. Minor calluses and rough areas. Corns are a medical procedure therefore this procedure is not performed.  
Tu., Call for an appointment. \$30

### Fitness & Exercise Classes

#### Arthritis Exercise\*

2nd & 4th W, ongoing, 1-1:45 p.m., \$2 drop-in fee per class, Room 304  
Jazzercise For Seniors\*-All Levels  
A fun low impact class to build balance and flexibility, tone your whole body, and charge up your metabolism.  
Tu/Th, ongoing, 11-11:45 a.m., \$28 (8 classes/paid monthly) or \$5 drop-in fee, register & pay in class, Community Center, Upper Level

#### Senior Barre Fitness

Please wear soft-soled shoes. Bring a Pilates ring to class.  
M/W, 9/12-11/9 (no class 11/7), 11:30 a.m.-12:15 p.m., \$68 (17 classes), SR4720  
Community Center, Upper Level

#### Senior Core and More

Bring a mat, a small FitBall, an exercise band, water, and towel. Optional a pair of 1 or 2 lb weights.  
M/W/F, 9/7-10/7, 9:30-10:15 a.m., \$56 (14 classes), SR4721a  
M/W/F, 10/10-11/11 (no class 11/7), 9:30-10:15 a.m., \$56 (14 classes), SR4721b  
Community Center, Upper Level

#### Tai Chi

**Tai Chi Qigong Shibashi**  
Easy and beginning class in which you will learn the movements.  
Th, 9/15-11/3, 10:10-11:10 a.m., \$48 (8 classes), SR4701a  
Th, 11/10-1/5 (no class 11/24), 10:10-11:10 a.m., \$48 (8 classes), SR4701b, Room 303

#### Tai Chi Beginning

Putting the Qigong movements into flowing rhythmic patterns.  
Th, 9/15-11/3, 11:15 a.m.-12:15 p.m., \$48 (8 classes), SR4702a  
Th, 11/10-1/5 (no class 11/24), 11:15 a.m.-12:15 p.m., \$48 (8 classes), SR4702b, Room 303

#### Yoga\* – All Levels

Gentle yoga which includes stretching and strengthening.  
Tu/W/Th, 10-11 a.m., \$2 drop-in fee per class, Room 304

#### Zumba Gold

Designed for the active older adult.  
M/W/F, 9/7-10/7, 10:30-11:15 a.m., \$56 (14 classes), SR4717a  
M/W/F, 10/10-11/11 (no class 11/7), 10:30-11:15 a.m., \$56 (14 classes), SR4717b  
Community Center, Upper Level

#### Treadmill\*

M-F, 10 a.m.-3 p.m., Free to use  
Enrichment Center, off of Activity Room

### Luncheons

#### Lunch

Come and join us for lunch. Reservations are required and must be called in by noon the business day before you want to attend. Call for a menu/reservations.  
M/W/F, 11:45 a.m.-12:45 p.m., \$3.50 suggested donation for ages 60+, \$6 charge ages 59 & under.

### Trips

#### Mackinac Island/Grand Hotel 4 Day/3 Night Package

This trip is for people 50 years and over. We welcome guests 21-49 years of age that share the same room.  
M-Th, 10/24-10/27,  
Double Occupancy \$972,  
Single Occupancy \$1,212,  
Triple Occupancy \$947,  
prices are per person. Call for information and availability, SR807

#### Library\*

Books and jigsaw puzzles are available. We have a take one, leave one system.

# aquatic programs

## Waverly Pool Update

The Waverly East Intermediate Pool will be closed this fall due to construction in the locker rooms and pool area. The Pool will close on **August 26, 2022** and will tentatively re-open on **February 6, 2023**. Check the website and winter magazine for more exact details. Below are some renderings of what the locker rooms will look like.



# special events

## **Pint-Sized Picassos – Parent Participation**

Let us provide the materials and clean-up while your child provides the creativity. There will be a couple different projects each week. The easels will also be available every week for the children to use. No need to register in advance.  
**Th, 9/22-10/20, 10-11 a.m., Ages 2-5, \$1 per child per week – adults are free, Room 301 in the Enrichment Center**

## **Trick-or-Treat Trail**

Come and “trick-or-treat” the Sharp Park trail at the displays set up by local businesses and groups. A \$1 fee per child will be collected at the park and will be used for future parks events. We encourage everyone to wear costumes and bring your own trick or treat bag. If you are a business or civic group and would like to have a table, please call us at 323-8555 or visit [www.deltami.gov](http://www.deltami.gov) to obtain a form. Trail shuts down at 7:30 p.m.  
**Tu, 10/11, 5:30-7:30 p.m. (rain date is 10/12)**  
**\$1 per child (while candy supplies last) Sharp Park**

## **Parks Bingo**

Back this October we will have a bingo card incorporating things to do at the parks in Delta Township. The card will be available on our website, Facebook, and you can also call the office at 323-8555 and a card can be emailed or sent to you in the mail. Once you get a bingo from completing the items listed on the card you can turn it into the Delta Township Parks and Recreation Department for a candy prize. You will have the entire month of October to get a bingo. Have fun and enjoy the parks!

## **Mom to Mom Sale**

Looking for a place to sell your child’s items? Spaces are still available to reserve so visit our online catalog for more vending information and to reserve your spot today at [www.deltami.gov/registration](http://www.deltami.gov/registration).

Space Only (Resident) – \$20  
Space w/table (Resident) – \$25  
Space Only (Non-Res) – \$30  
Space w/table (Non-Res) – \$35  
**Sa, 9/17, 9 a.m.-2 p.m.**  
**Early Bird Admission (9 a.m.) – \$2/adult**  
**General Admission (10 a.m.) – Free**  
**Admission paid at door – Cash Only**  
**Joseph E. Drolett Community Center**



## **Daddy Daughter Dance, Mother Son Dance, and Mother Daughter Dance**

Dance to your favorite music in the elegant surroundings of the Crowne Plaza Lansing West Hotel. You will also enjoy refreshments, a corsage for the young lady for Daddy Daughter, a special surprise for the young man for Mother Son and a special surprise for the young lady for Mother Daughter, photographs, and more. The dances are open to all young ladies/young men and the adult male/female of their choice. Dinner is on your own. If you would like to eat at Bordeaux in the hotel you must call them for reservations at 391-1307. To register for the dances please visit [www.deltami.gov/registration](http://www.deltami.gov/registration) or call the Delta Township Parks and Recreation Office at 323-8555.

**M, 2/6/23 - Daddy Daughter, 7-9 p.m.**  
**M, 3/6/23 - Mother Son, 7-9 p.m.**  
**M, 4/3/23 - Mother Daughter, 7-9 p.m.**  
**\$10 per person (Delta Township residents)**  
**\$12 per person (non-residents)**  
**Crowne Plaza Lansing West Hotel**

## **North Pole Express Mailbox**

Back for 2022 we will once again have our North Pole Express Mailbox where area youth can drop their letters to Santa! The mailbox will be located on the Southside of the Delta Township Administration Building located at 7710 West Saginaw Highway beginning in December.



Letters will be regularly picked up by Santa’s most trusted helpers and will be hand-delivered to the big man himself. Santa will read and respond to each letter with a return address. For more information or for questions, please contact the Delta Township Parks and Recreation Department at 323-8555.

# enrichment classes

## Strength, Flexibility, and Core

W, 5:30-6:15 p.m.  
9/14-11/9  
\$50 Res/\$59 Non-Res  
Community Center, Upper Floor

## Pilates - Monday

M, 5:30-6:15 p.m.  
9/12-10/31  
\$44 Res/\$52 Non-Res  
Enrichment Center, Room 303

## Pilates, Ballet and Barre Fitness

Th, 5:15-6 p.m.  
9/15-11/10  
\$50 Res/\$59 Non-Res  
Enrichment Center, Room 303

## Zumba - Monday

M, 6:30-7:15 p.m.  
9/12-10/31  
\$52 Res/\$60 Non-Res  
Enrichment Center, Room 303

## Zumba - Thursday

Th, 6:15-7:15 p.m.  
9/15-11/10  
\$59 Res/\$68 Non-Res  
Enrichment Center, Room 303

## Zumba Toning and Abs

W, 6:30-7:15 p.m.  
9/14-11/9  
\$59 Res/\$68 Non-Res  
Community Center, Upper Floor

## Jazzercise LO

Tu/Th, 9:30-10:30 a.m.  
Ongoing, Starts September 6  
\$59/month  
Community Center, Upper Floor  
Call Sandy for info. 517-285-0066

### Class Registration

Class registration begins on **Tuesday, August 30 at 8 a.m.** (except for those that indicate \*Register and pay fees in class). Full class descriptions can be found at [www.deltami.gov/registration](http://www.deltami.gov/registration).

## TRX Suspension Training

Session 1: Tu/Th, 6:15-7 p.m.  
9/13-10/6 (8 classes)  
\$52 Res/\$60 Non-Res  
Grand Woods Park Shelter  
Session 2: Th, 7-7:45 p.m.  
10/13-11/17  
\$39 Res/\$45 Non-Res  
Community Center, Lower Floor

## Get Your Glutes in Gear

Session 1: M, 6:30-7:15 p.m.  
9/12-10/24  
Session 2: M, 6:30-7:15 p.m.  
11/7-12/19  
\$56 Res/\$63 Non-Res  
Community Center, Upper Floor



## Full Body Circuit Exercise

Session 1: Th, 7:15-8 p.m.  
9/15-10/27  
\$56 Res/\$63 Non-Res  
Session 2: Th, 7:15-8 p.m.  
11/3-12/15, No Class 11/24  
\$48 Res/\$54 Non-Res  
Community Center, Upper Floor

## Anxious to Awesome (ages 6-11)

M, 6-7 p.m.  
9/19 -10/24  
\$97/child  
Enrichment Center, Room 304

## Karate - Youth (ages 6-13)

Tu, 6:30-7:30 p.m. or 7:30-8:30 p.m.  
9/13-11/1  
\$25/individual  
Community Center, Lower Floor

## Karate for Families

Tu, 6:30-7:30 p.m. Or 7:30-8:30 p.m.  
9/13-11/1  
\$50/family  
Community Center, Lower Floor

## Karate for Adults (14+)

Tu, 7:30-9 p.m.  
9/13-11/1  
\$30/individual, Community Center, Lower Floor





PROGRAM	AGE(S)	DAY(S)	TIME(S)	DATE(S)	COST
Dance with Me (EC Rm 303)	18mo-3	W	4:15-5 p.m.	10/19-12/14 No Class 11/23	\$50 Res/\$55 Non-Res
Dance with Me (EC Rm 303)	18mo-3	W	4:15-5 p.m.	1/11-3/1	\$60 Res/\$65 Non-Res
Creative Dance 1 (EC Rm 304)	3-4	Tu	4:20-4:50 p.m.	10/18-12/13 No Class 11/8	\$60 Res/\$65 Non-Res
Creative Dance 1 (EC Rm 303)	3-4	Sa	9-9:30 a.m.	10/22-12/17 No Class 11/26	\$60 Res/\$65 Non-Res
Creative Dance 1 (EC Rm 304)	3-4	Tu	4:20-4:50 p.m.	1/10-2/28	\$60 Res/\$65 Non-Res
Creative Dance 1 (EC Rm 303)	3-4	Sa	9-9:30 a.m.	1/14-3/4	\$60 Res/\$65 Non-Res
Creative Dance 2 (EC Rm 303)	4-5	Tu	4:15-4:55 p.m.	10/18-12/13 No Class 11/8	\$60 Res/\$65 Non-Res
Creative Dance 2 (EC Rm 304)	4-5	Sa	9:15-9:55 p.m.	10/22-12/17 No Class 11/26	\$60 Res/\$65 Non-Res
Creative Dance 2 (EC Rm 303)	4-5	Tu	4:15-4:55 p.m.	1/10-2/28	\$60 Res/\$65 Non-Res
Creative Dance 2 (EC Rm 304)	4-5	Sa	9:15-9:55 a.m.	1/14-3/4	\$60 Res/\$65 Non-Res
Intro Tap/Jazz (EC Rm 303)	5-7	Tu	5-5:45 p.m.	1/10-5/9 No Class 3/28	*\$140 Res/\$150 Non-Res*
Tap 1 (EC Rm 303)	7-10	Tu	5:50-6:35 p.m.	1/10-5/9 No Class 3/28	*\$140 Res/\$150 Non-Res*
Jazz 1 (EC Rm 304)	7-10	Tu	5-5:45 p.m.	1/10-5/9 No Class 3/28	*\$140 Res/\$150 Non-Res*
Jazz 2&3 (EC Rm 304)	9-13	W	6-6:45 p.m.	1/11-5/10 No Class 3/29	*\$150 Res/\$160 Non-Res*
Intro Ballet/Contemp. (EC Rm 304)	5-7	W	5:15-6 p.m.	1/11-5/10 No Class 3/29	*\$140 Res/\$150 Non-Res*
Intro Ballet/Contemp (EC Rm 304)	5-7	Sa	10-10:45 a.m.	1/14-5/13 No Class 4/1	*\$140 Res/\$150 Non-Res*
Ballet 1 (EC Rm 304)	7-10	W	6:45-7:30 p.m.	1/11-5/10 No Class 3/29	*\$140 Res/\$150 Non-Res*
Ballet 2&3 (EC Rm 303)	9-13	Tu	6:40-7:35 p.m.	1/10-5/9 No Class 3/28	*\$150 Res/\$160 Non-Res*
Contemporary 1 (EC Rm 304)	7-10	Tu	6:45-7:30 p.m.	1/10-5/9	*\$140 Res/\$150 Non-Res*
Contemporary 2&3 (EC Rm 304)	9-13	Tu	5:45-6:40 p.m.	1/10-5/9 No Class 3/28	*\$150 Res/\$160 Non-Res*
Musical Theatre 1 (EC Rm 303)	7-10	W	5:50-6:35 p.m.	1/11-5/10 No Class 3/29	*\$140 Res/\$150 Non-Res*
Musical Theatre 2&3 (EC Rm 303)	9-13	W	5-5:45 p.m.	1/11-5/10 No Class 3/29	*\$140 Res/\$150 Non-Res*
**Children's Dance Company (EC Rm 303)	7-13	In Session - Next Audition May 2023			*\$140 Res/\$150 Non-Res*

All dance classes held at the Delta Township Enrichment Center at 4538 Elizabeth Rd. \*Class fee can be paid in 2 installments\*

\*\* Children's Dance Company audition will be in May of 2023. Child must be 7 years by date of audition. \*All class dates, times, and locations are subject to change\*

**Register by visiting [www.deltami.gov/registration](http://www.deltami.gov/registration) • 323-8555**

# sports programs

## Adult Coed Halloween Kickball Tournament

Come and play in this fun Halloween kickball tournament which will include a Halloween costume contest, bon fire, team photo, tournament t-shirt, and much more! Only full team registrations will be accepted. Registration form located at the Delta Township Parks and Recreation office or online at [www.deltami.gov/parks](http://www.deltami.gov/parks). Call 323-8555 for more information. Deadline: W, 10/5  
Date: Sa, 10/22  
Ages: 16+  
Fee: \$20 per person  
Location: Erickson Park

## Youth Coed Basketball Camp

High-intensity multi-tasking drills will be used to increase mental and physical speed of play. Basketball University will supply the instructors and equipment. No refunds after 10/5  
Deadline: Tu, 10/5  
Dates: W, 10/5-10/26 (make-up date 11/3)  
Grade/Time:  
1st/2nd – 5:45 p.m.  
3rd/4th – 6:45 p.m.  
5th/6th – 7:45 p.m.  
Fee: \$30 Res/\$35 Non-Res  
Location: Waverly East Intermediate

## Thank You to our Volunteer Coaches!

Thank you to our youth coed baseball, coed t-ball, coed soccer, coed NFL flag football, and basketball coaches. These programs could not run without all of your hard work!



## Youth Basketball

An eight-week instructional program which stresses fun and fundamentals of the game. Practices and games are held on Saturdays within a one-hour time block. Coaches will be parents who want to volunteer. Please mark registration forms if you are interested in coaching. Coaching packets will be provided for season. Deadline: F, 12/9  
Dates: Sa, 1/7/23-2/25/22 (make-up date 3/5)  
Age (Coed): 5-6, 7-8, 9-10  
Fee: \$40 Res/\$45 Non-Res. \$10 late fee after 12/9, if space permits. \$15 for athletic jersey if needed  
Location: Waverly East Intermediate

## Youth Basketball Gym Supervisor Wanted!

Gym Supervisor must be 18+ years of age. Responsibilities include opening/closing gym on Saturdays, set-up & break-down of hoops, tables and chairs, responding to questions at the gym. Paid position. Please call the Parks and Recreation office if you are interested.

## Coed Wiffleball

You can now get your friends together and play in a fun Wiffleball League this Fall with a chance to win Champion t-shirts! Only full team registrations will be accepted. Registration forms located at the Delta Township Parks and Recreation office or online at [www.deltami.gov/parks](http://www.deltami.gov/parks)  
Deadline: 9/2/23  
Dates: Tu&Th, 9/13/23-10/13/23  
Fee: \$20 per player  
Ages: 13-15, 16-18, 18+  
Location: Sharp Park, Delta Mills  
Teams: 8 players maximum, male & female players allowed but not a requirement.  
Manager Meeting: 9/8/23, 6:30 p.m., Delta Administration Building

## Youth Coed Spring Soccer

Participants have the choice of playing traditional (6v6, 7v7, or 8v8) or micro (4x4) soccer. Participants, coaches, and parents will learn soccer skills and rules. Deadline: F, 3/31/23  
Practices: Begin the week of April 17, 2023 on a weekday chosen by the coach and last for 8 weeks.  
Games: Saturdays, 4/29/23-6/10/23 (make-up date 6/17)  
Age: 4-10 as of 4/29/23  
Fee: \$40 Res/\$45 Non-Res \$10 late fee after 3/31, if space permits (late fees are not refundable) \$15 for athletic jersey, if needed  
Location: Mt. Hope Park

## Itty Bitty Kickers

Practices and games are held on Saturdays within a 40-minute time block. Micro soccer rules and size 3 soccer balls will be used. Deadline: F, 3/31/23  
Dates: Sa, 4/29/23-6/3/23 (make-up date 6/4)  
Age: 3 as of 4/29/23  
Fee: \$25 Res/\$30 Non-Res. \$10 late fee after 3/31, if space permits. (late fees are not refundable) \$15 for athletic jersey, if needed.  
Locations: Mt. Hope Park

## Adult Coed Indoor Volleyball

Teams play six against six. Each team must have at least three males and three females, twelve players per team limit. Only full-team registration will be accepted. There are no individual player fees. Deadline: Tu, 12/27  
Dates: Tu, 1/10/23-2/28/23  
Times: 6 or 7p.m.  
Ages: 16+  
Fee: \$125 per team (8 matches)  
Location: Waverly East Intermediate

# fireworks sponsors

THANK YOU TO OUR SPONSORS

THANK YOU TO OUR 2022 SPONSORS!

## 75<sup>th</sup> Annual Delta Township Fireworks Display

### Diamond Sponsors



### Platinum Sponsors



### Gold Sponsors



### Silver Sponsors



### Bronze Sponsors

- Bob Waldon - Delta Township Parks & Recreation Commissioner
- Amy Kraus - Delta Township Parks & Recreation Commissioner
- Brian Reed & Family
- Brunette Appraisal Company
- Diane Maniet
- Doble Family, Justin and Cara
- EagleMunk Pub and Brewery
- Jeff & Lisa Hicks Family
- McCoy Law
- Medawar Jewelers
- Mendez Family, Ernesto & Ambre
- Rob & Wend Spagnuolo

### In Kind Sponsors

The Lansing Columbian Association



# community awards

The Delta Township Community Awards Program is returning for its 16th year and there is a lot to celebrate. We are currently seeking nominations for the 2022 Community Awards Program. This year's program is unique as we not only get to celebrate and highlight the outstanding contributions made by citizens, businesses, and organizations helping to make our community a great place to live, work and play, but we are also celebrating the Township's 60th Anniversary of becoming a Charter Township.



The purpose of this program is to shine a light on the positive influences that your friends, neighbors, and family members are making throughout our community, and we need your help to identify these unsung heroes.

Be sure to check out all four categories of nominations. Deadline for nominations is Friday, September 30, 2022 by 3:00 p.m. Nominations can be submitted through the online entry form(s) found at [deltami.gov/communityawards](http://deltami.gov/communityawards) on the left-hand side of the screen (hard copies of forms are available upon request.)

## Nomination Categories:



The **Citizen of the Year Award** will honor selected individual citizens whose extraordinary contributions go “above and beyond” to enhance the quality of life and general reputation of the township.

The **Young Person of the Year Award** is limited to high school seniors 2022-2023 (whether traditional high school or home-schooled) who have made a positive contribution to the community, is an example to their friends, may have excelled in academics, music, arts, athletics, etc., or has successfully faced personal challenges. A scholarship will be awarded to the selected individual.



The **Business of the Year Award** will honor selected Delta Township businesses or businesspersons who have been responsible for exceptional outcomes between and among businesses, governments, and nonprofit organizations; OR, have served as a role model for other businesses; OR, have gone above and beyond the scope of business to support and promote Delta Township.

The **Community Organization of the Year Award** will honor selected groups or organizations for their dedication in serving and promoting Delta Township through volunteer contributions that has impacted the quality of life in Delta Township, provided leadership over a period of years, thereby contributing to the township's character, and/or made a valuable contribution that has enhanced the quality of life for residents of Delta Township.



All nominations must be submitted no later than Friday, September 30, 2021, at 3 p.m. Nominations may be submitted online (a printable PDF version is also available). If you choose to fill out a hard copy nomination form, please return it via email to [awards@deltami.gov](mailto:awards@deltami.gov), by mail to the Manager's Office, 7710 West Saginaw Highway, Lansing, MI 48917, or via fax to 517-327-1703.

**For more information visit [www.deltami.gov/communityawards](http://www.deltami.gov/communityawards) or call 323-8590**

# library information

## Cultivating Community

DTDL is committed to providing information and access to help with culinary literacy and food insecurity in our community. Our Seed Library, Little Free Fridge, and Little Free Pantries are tools used to facilitate growing, harvesting, and sharing as a community. We accept donations for these efforts throughout the year. Be on the lookout for other ways to share your food stories with our community too. For more information, please visit [dtdl.org/community](http://dtdl.org/community).

## Outdoor Adventures

Several new features have been added outside the library, including Grab & Go Hold Lockers, outdoor musical instruments, a Sensory Walk, and a new Poetry Walk, installed by the flag post. Be sure to check them out the next time you stop by!

## Tutor.com

Tutor.com is free with your DTDL card and provides on-demand tutoring, homework help, test preparation and writing assistance for students in grades K-Adult in over 60 subjects. Tutors are available 2-9 p.m., 7 days a week. Visit [dtdl.org/tutor](http://dtdl.org/tutor).

## Books by Mail

If you can't make it to the library for carside service and need more than just access to digital collections, you can still get library materials. Learn more and fill out an application at [dtdl.org/booksbymail](http://dtdl.org/booksbymail).

## @ Your Service

Get a one-on-one session covering tech help, library resources, resume review, and more. Register for an appointment at [dtdl.org/@](http://dtdl.org/@).

## Expungement Help

Get a guided tour of the expungement process from DTDL staff, including navigating [michiganlegalthelp.org](http://michiganlegalthelp.org). Register for an appointment at [dtdl.org/expungement](http://dtdl.org/expungement). Resource packets are also available for pickup.

## Fall 2022 Programs

See some highlights below and visit [dtdl.org/events](http://dtdl.org/events) for a full schedule and to register for programs.

### Adult Programs

Books and Brews - First Tuesdays, 7 p.m. at EagleMonk  
Monthly Movies - Third Tuesdays, 12 p.m.  
Virtual Book Chat - Third Wednesdays, 6 p.m.

English Conversation Group - Fourth Tuesdays,  
10:30 a.m. & 5 p.m.

Register for our **Computer Basics** class, October 3 & 24,  
6-7 p.m. Bring your laptop or take notes. Learn helpful  
shortcuts, file organization, and other basic use tips.

Grab your friends and sign up to play **The Euphorigen Investigation**, an adult escape room that immerses players in a world of manipulated media, social media bots, and deep fakes. Teams of 4-6 players, ages 16+.

Use the Beanstack app to participate in our second annual **Rummaging Reader Contest**, September 1-30. Complete activities to enter a prize drawing. Ages 16+.

Join us **Sunday Afternoons**, 12-3 p.m., for self-led adult activities, including games and puzzles, paper crafts, and Come Write In (NaNoWriMo).

### Youth Programs

*Weekly programs begin in September*

Stories & Crafts – Tuesdays, 10:30 a.m.

Game On – Tuesdays, 3:30-5:30 p.m. (ages 8-18)

Baby/Toddler Storytime – Wednesdays, 10:30 a.m.

Stress Busters – Thursdays, 1 p.m. (3-6) & 4:30 p.m. (7-14)

Outdoor Storytime – Fridays, 10:30 a.m.

PJ Storytime – First Tuesdays, 6 p.m.

Virtual Playgroup – Second Wednesdays, 10:30 a.m.

Tween Book Club – Third Wednesdays, 4:30 p.m. (9-12)

Virtual Storytime – First Fridays, 10:30 a.m.

Family Movie Matinees – Last Saturdays, 10:30 a.m.

**Paws for Reading** continues this fall with several sessions each month. Kids can practice their reading with a great listener, a therapy dog!

Get back to nature with **Nature Explorers** for ages 5-8, including fun games, art activities, and a nature walk. Saturday, October 15 from 10:30 a.m.-12 p.m.

Homeschooling families are invited to our **Homeschoolers' Open House** on Monday, September 26 at 6:30 p.m. to learn about library services and programs.

Join us for a fall **Park Playdate** at Grand Woods Park on Saturday, September 10, 3-4:30 p.m.

**Tween and teen programs** will feature gaming, art, anime, college prep information, and more.

**For more information about the library's services and programs, visit [dtdl.org](http://dtdl.org) or call 321-4014.**

# s a f e t y t i p s



## Safety Rules for Safe Bus Riding

School will be starting before long and in order to keep children safe while on and around buses the following rules should be followed:

- Be at the bus stop early. The bus driver may not see you running for the bus if you are late; you could slip and fall under the wheels.
- Wait for the bus in a safe place away from the road and the cars that are driving by. Stay back from the curb until the bus has come to a complete stop.
- Sit down as soon as possible. There may be other people waiting to get on and if it takes too long for everyone to get on other drivers may get impatient and go around the bus. Someone could get hit if this happens.
- Stay seated at all times, “back to back” and “bottom to bottom.” Take off your backpack and put it in your lap.
- Keep your hands, arms and head inside the bus at all times. A bus is wider than a car; it gets very close to trees and poles and you could be seriously injured if you have any body parts outside the bus.
- Please don’t eat or drink on the bus. You could choke on the food and the driver may not see you.
- Listen to the bus driver and follow directions. The bus driver’s instructions are for your safety.
- Leave the bus carefully using the handrail so you won’t fall.
- Take 10 giant steps past the front of the bus before crossing in front of it. You should be able to see the driver’s face. Remember, if you can’t see his face he can’t see you.
- Wait for the bus driver’s signal telling you it is safe to cross the road.
- Look LEFT, RIGHT, LEFT yourself before crossing the road. The driver may not see everything.

[www.deltami.gov](http://www.deltami.gov) • 321-6622

•Stay away from the bus if you drop or forget something. NEVER go back to pick up something in the road; get an adult to get it for you. If you forgot something on the bus, you can always get it later. The bus driver can’t see you if you are too close to the bus. Reprinted with permission from the Children’s Hospital of Michigan Trauma Update

## Don’t Waste Your Waste

Yard waste has many valuable uses in the home landscape. They can help retain soil moisture, retard weed growth and enrich the soil. Burning yard waste not only wastes the value of these materials in the landscape, it also increases the risk of wildfire. Over one-third of Michigan wildfires are caused by debris burning. Yard waste can be recycled by either mulching or composting. Mulching simply refers to any technique where organic matter (such as grass clippings, leaves, small brush, etc.) is spread in thin layers on top of the ground and left to decompose naturally. Grass clippings, leaves and compost can be placed around garden vegetables and flowers to keep down weeds and retain moisture. Leaves can also be chopped up with a lawn mower and left on the lawn to decompose. Yard waste can also be easily prepared for composting. Composting can be done in a variety of ways. With passive methods, the yard waste is left in a pile to decompose over time. Active methods carefully control the decomposition process to create compost faster. Both mulching and composting add valuable organic material to the soil. Organic material helps retain moisture and nutrients needed for plant growth.

## Burning Permits

See page 17

## Campfire Safety

### How to Put Out the Campfire

A roaring fire is both a success, and a responsibility. It is your job to properly maintain and extinguish your campfire so that future campers can do the same.

### Maintaining Your Campfire

As you’re enjoying your campfire, remember these safety tips:

- Once you have a strong fire going, add larger pieces of dry wood to keep it burning steadily
- Keep your fire to a manageable size
- Make sure children and pets are supervised when near the fire
- Never leave your campfire unattended
- Never cut live trees or branches from live trees

### Extinguishing Your Campfire

When you’re ready to put out your fire and call it a night, follow these guidelines:

- Allow the wood to burn completely to ash
  - Pour lots of water on the fire, drown ALL embers, not just the red ones
  - Pour until hissing sound stops
  - Stir the campfire ashes and embers with a shovel
  - Scrape the sticks and logs to remove any embers
  - Stir and make sure everything is wet and they are cold to the touch
- If you do not have water, use dirt. Mix enough dirt or sand with the embers. Continue adding and stirring until all material is cool. Remember: do NOT bury the fire as the fire will continue to smolder and could catch roots on fire that will eventually get to the surface and start a wildfire. REMEMBER: If it’s too hot to touch, it’s too hot to leave!

Don’t burn dangerous things! Never burn aerosol cans or pressurized containers. They may explode. Never put glass in the fire pit. Glass does not melt away, it only heats up and shatters. Broken slivers of glass are dangerous. Aluminum cans do not burn. In fact, the aluminum only breaks down into smaller pieces. Inhaling aluminum dust can be harmful to your lungs.

*Autumn*  
**DRIVING TIPS**

**Slick roads make autumn the most dangerous driving season. Find out the dangers associated with fall driving and how to keep safe.**



**Leaves**

Wet leaves can create super slick streets, hide road hazards and increase danger of hydroplaning. Give yourself extra stopping space between other vehicles, keep your tire treads at 2/32" depth or more and your brakes in good condition.



**Fog**

Improve your visibility when driving through fog by using your low beamlights (high beams simply create glare by bouncing off the fog), driving slowly and allowing extra stopping space between your car and the car in front of you.



**Frost**

Frost reduces visibility and increases the dangerous icy roads known to cause accidents. Clear your car windshield entirely before driving and slow your speed when approaching bridges and overpasses which are more prone to collecting frost on their roadways.



**Glare**

The time change associated with fall means your morning drive may be brighter in the autumn than other times of the year – the resulting glare can be blinding. Keep your windows clean and have a pair of sunglasses handy to lower the impact of glare.

### School Bus Safety – STOP FOR SCHOOL BUSES

Did You Know: School buses are the most regulated vehicles on the road; they're designed to be safer than passenger vehicles in preventing crashes and injuries; and in every state, stop-arm laws exist to protect children from other motorists. If you are driving, remember these simple rules:

- Yellow flashing lights on a school bus mean slow down — don't speed up — because the bus is preparing to stop. There are likely students waiting to get on the bus or parents waiting nearby to pick up children.
- Red flashing lights mean stop — and wait at least 20 feet behind the bus — because children are getting on or off the school bus. Stay stopped until the red lights stop flashing, the extended stop-arm is withdrawn, and the bus begins moving.
- Even when lights aren't flashing, watch for children, particularly in the morning or mid-afternoon, around school arrival and dismissal times. Be alert as you back out of a driveway, or drive through a neighborhood, school zone or bus stop.

Parents - talk bus safety with your children:

Your child should arrive at the bus stop at least 5 minutes before the bus is scheduled to arrive. Teach them to play it SAFE:

- Stay five steps away from the curb.
- Always wait until the bus comes to a complete stop and the bus driver signals for you to board.
- Face forward after finding a seat on the bus.
- Exit the bus after it stops and look left-right-left for cars before crossing a street.

# parks & rental facilities

## Park Shelter & Pavilion Rentals

Delta Township park shelters and pavilion are available for rental. Shelters can be rented at Sharp Park, Delta Mills, and Grand Woods. The pavilion at Grand Woods is available for rental as well. Most shelters include access to electricity, grills, restrooms, and playgrounds.

**Reservations are taken starting on the first business day of the year** for dates between May 1 and September 30. Reservations may be made over the phone by calling 323-8555 or in person at the Parks, Recreation and Cemeteries office in the Delta Township Administration Building. Full payment is due when reservation is made. Refunds will only be issued for cancellations made at least 21 calendar days prior to the rental date.

### Sessions Available

Half Day: 10 a.m.-3 p.m.  
Half Day: 4-9 p.m.  
Full Day: 10 a.m.-9 p.m.

### Shelter Reservation Fees

**Sharp Park, Delta Mills Park and Grand Woods Park**

Half Day: \$50 Res/\$60 Non-Res  
Full Day: \$80 Res/\$100 Non-Res

### Pavilion Reservation Fees

**Grand Woods Park**

Half Day: \$75 Res/\$85 Non-Res  
Full Day: \$130 Res/\$150 Non-Res

Check availability and reserve by calling 323-8555.



Grand Woods Shelter

## Rental Facilities

Looking for indoor space to host your next group event or family gathering? Contact the Parks and Recreation Department at 323-8555 to find out how you can rent the Joseph E. Drolett Community Center or Enrichment Center.

### Joseph E. Drolett Community Center

The Joseph E. Drolett Community Center is located on the corner of Canal Road and Willow Highway and features a bi-level floor plan that seats up to 100 people on the upper floor and 70 people on the lower floor. The entire building is handicap accessible, air-conditioned, and non-smoking. Use of the kitchen, oven, stove, sink, electricity, tables, and chairs are included in the rental.



Community Center, Upper Floor

### Enrichment Center

The Enrichment Center is located at 4538 Elizabeth Road and has an Activity Room and several classrooms that can be reserved. The entire building is handicap accessible, air-conditioned, and non-smoking. Activity Room rentals can accommodate up to 75 people and include use of the kitchen, sink, refrigerator, microwave, electricity, tables, and chairs. Classroom rentals can accommodate up to 40 people and include use of electricity, tables, and chairs.

### Rental Fees

**Joseph E. Drolett Community Center (this facility can be booked up to 2 years in advance)**

F, 12 p.m.-1 a.m., \$265 Res/\$315 Non-Res\*  
F, when booked with Saturday, \$145 Res/\$195 Non-Res  
Sa, 8 a.m.-1 a.m., \$400 Res/\$500 Non-Res  
Su, 11 a.m.-12 a.m., \$285 Res/\$335 Non-Res\*

\*Rental fees on township holidays are \$400 Res/\$500 Non-Res

**Enrichment Center Activity Room (can be booked up to 1 year in advance)**

F, 4-11 p.m., \$180 Res/\$240 Non-Res\*  
Sa, 11 a.m.-11 p.m., \$250 Res/\$310 Non-Res\*  
Su, 11 a.m.-11 p.m., \$250 Res/\$310 Non-Res\*

\*Rental fees on township holidays are \$280 Res/\$340 Non-Res

**Enrichment Center Classrooms (Limited Availability)**

M-Th, 5-9 p.m., \$15 per hour Res/\$25 per hour Non-Res  
Two hour rental minimum.

**A damage deposit of \$250 and a copy of your renters or homeowners insurance policy are required with all facility rentals.**

**Check availability for any of these facilities by calling 323-8555**



# did you know?

## Annual Water Quality Reports

Our Annual Water Quality Reports are always available for our customers. This includes information about your water, where it comes from, and what the tests tell us.

Here are two ways to access your copy:

1. Visit [www.deltami.gov/waterquality](http://www.deltami.gov/waterquality)
2. Obtain a paper copy by calling 323-8570

## Property Taxes

2022 Summer Property Taxes are due September 14, 2022. 2022 Winter Property Taxes will be mailed out December 1, 2022 and are due on February 14, 2023. Payments by check can be sent by mail or submitted in our drop boxes located at the north and east entrances of the Administration Building. Bills can also be paid online using a credit card or e-check (fees apply).

Heading out of Michigan for the winter? Sign up to have your payment automatically withdrawn from your bank account. The winter tax payment can be scheduled for withdrawal on December 30, 2022 or February 14, 2023. This is a free service and ensures your payment is received on time. Enrollment can be completed online at <https://www.deltami.gov/residents/e-services>. Please note, this is not an ongoing service, a new form must be submitted annually.

Tax information is available 24/7 online at [www.deltami.gov](http://www.deltami.gov) by clicking on Property Information on the homepage. Please call 323-8510 with any questions.

## Pet Must be on a Leash

Sec. 28-145. - Leashed animals on public property.

(a) It shall be unlawful for any person while on public property, including public streets, public sidewalks, public trails, and public park property, within the township to bring, drive, lead or carry any dog or small animal or pet which is unleashed, or which is on a leash longer than six feet or capable of extending longer than six feet onto any public property in the township, unless a specific area is designated for unleashed dogs, small animals or pets. (b) Any person who violates this section shall be guilty of a municipal civil infraction and subject to fines as determined by resolution of the township board.

## Burning Permits

Delta Township residents must obtain a burning permit for any open burning within the township. This includes recreational fires and fires within a container. Burning permits are available at no charge and may be obtained online at [www.deltami.gov/burnpermit](http://www.deltami.gov/burnpermit).

Burning of yard waste or burning in a burning barrel is only allowed in areas zoned agricultural. If you are unsure of your zoning or have any questions regarding the burning rules and regulations, please call 517.321.6622 or visit the township's website at [www.deltami.gov](http://www.deltami.gov). The Delta Township Burning Ordinance is strictly enforced.

## Vending and License Requirement

Please be aware a valid pictured vendor license is required by the Township Clerk for vending activity in the township either door-to-door or from a fixed commercial site. Vending licenses are NOT required for groups representing a school, religious organization, or charitable organization which is classified non-profit for federal internal revenue purposes. A license is also not required if the vendor leaves a brochure at a resident's home and does not knock or engage the resident in any capacity.

Pre-registered vendors are listed on the township website, [www.deltami.gov](http://www.deltami.gov). Residents should ask to see the Delta Township issued license if they are approached by a vendor if the license is not visible. If a vendor does not have a Township issued license, residents should contact the Sheriff's Department at 372-8217 x 2 as soon as possible. All other questions regarding this ordinance should be directed to the Delta Township Clerk's Office at 323-8500.

## Please Pick up after your Pets

As a courtesy to your friends and neighbors, please be sure to pick up your pet's waste when enjoying public pathways, sidewalks, and parks. There are pet waste bags available along our pathways and in our parks. Please help us to keep our Township clean so we can all enjoy the great amenities that Delta has to offer.



# elections & more

## Census & Redistricting – New 2022

The 2020 census has been completed and boundary lines have been redrawn for the federal, state, county, and local jurisdiction precinct boundaries. Boundaries are redrawn in Michigan based on population from the 2020 census information collected. Michigan election law requires new voter information cards to be mailed to ALL registered voters within Delta Township including inactive voters. Please mark “refused” or “unknown” on any voter information card received for someone not living at your address so the appropriate verification process can occur. It is expected the new voter identification cards were be mailed in May of 2022 and will reflect new Congressional, State of Michigan House of Representatives and Senate district numbers along with new precinct polling locations. These new precinct locations will be in effect starting August 2, 2022, Primary Election.

The 2022 New Precinct boundary and precinct polling location map can be viewed at the Delta Township website at [www.deltami.gov](http://www.deltami.gov).

## NEW - 2022 Delta Township Precinct Location Information

Below is the listing of Delta Township precinct locations and addresses for the upcoming 2022 elections. The August 2nd Primary Election and November 8 General Election for Delta Township residents. Your **2022 NEW VOTER INFORMATION CARD**, was be mailed in May of 2022, please contact the Delta Township Clerk’s Office at 323-8500 if you did not receive your new voter information card and a replacement will be sent to you.

### Polling Locations

Precinct	Location	Address
1	St. David’s Episcopal Church	1519 Elmwood Road, Lansing
2	Joseph E. Drolett - Delta Community Center	7550 West Willow Highway, Lansing
3	River’s Edge Community Church	12406 Broadbent Road, Lansing
4	Delta Township Fire Station	811 North Canal Road, Lansing
5	Mount Hope Church – Spyn Center – Michigan Avenue Entrance	202 South Creyts Road, Lansing
6	Delta Township Library	5130 Davenport, Lansing
7	St. Gerard’s Church	4437 West Willow Highway, Lansing
8	Faith Bible Church	5211 West Saint Joseph Highway, Lansing
9	Delta Enrichment Center	4538 Elizabeth Road, Lansing
10	South Church	5250 Cornerstone Drive, Lansing
11	Mount Hope Church–South Side Church–West Door - Creyts Road Entrance	202 South Creyts Road, Lansing
12	Riverview Church – West Venue	7533 West Saint Joseph Highway, Lansing
13	Our Savior Lutheran Church	7910 East Saint Joseph Highway, Lansing
14	Grace Bible Church	1000 South Canal Road, Lansing
15	Riverview Church – West Venue	7533 West Saint Joseph Highway, Lansing
16	South Church	5250 Cornerstone Drive, Lansing

### 2022 Election Dates

November 8, 2022, General Election

**Voter Registration Deadline – Election Day - Tuesday, November 8, 2022**

**Ballots will be available after September 29, 2022**

If residents will be out of the community on Election Day or need any information regarding the upcoming election, contact the Township Clerk’s Office at 323-8500.

**[www.deltami.gov](http://www.deltami.gov) • 323-8500**

## Rights for Michigan Voters – Registering to Vote through Election Day

Proposal 3 “Promote the Vote” was a Constitutional Amendment that was passed overwhelmingly by Michigan voters in the General Election in November of 2018 by a margin of 66.8% Yes and 33.2% No. This constitutional amendment brought about the following changes for Michigan Voters for voter registration:

### Registering to Vote up to 15 days prior to Election:

Register to vote at:

- Any Secretary of State branch office
- Your township, city or county clerk’s office
- A designated state agency
- By Mail
- Online through Secretary of State Office.

### Register to Vote – 14 days before election and including Election Day (Same Day Registration):

Register to vote at:

- Voter must appear in person at the Delta Township Clerk’s Office during regular business hours and up until 8 p.m. on Election Day. Residency and identification verification will be required. Documents must have the voters name and current Delta Township address. Digital copies are acceptable.
- Additional weekend hours will be available the weekends prior to each scheduled election. Contact the Delta Township Clerk’s Office at 323-8500 for additional information.

### Can I register to vote at my polling precinct on Election Day?

NO, if you are not registered before Election Day, you must register in person to at the Delta Township Clerk’s Office. A voter registering Election Day has choice to either vote by absentee ballot at the Clerk’s Office, or to take their regis-

tration receipt to their precinct and vote, the close of polls is 8 p.m.

For any questions regarding voter registration or elections, please contact the Clerk’s Office at 323-8500. Visit the Secretary of State website for additional election information at [www.michigan.gov/sos](http://www.michigan.gov/sos) or the Delta Township website at [www.deltami.gov](http://www.deltami.gov).

### Absentee Ballots

#### Who is eligible to vote by “mail” absentee ballot?

**All REGISTERED VOTERS** are eligible to receive an absentee ballot once a written request or application has been received. A “reason” is no longer required.

#### How do I get an absentee ballot?

- Voters are required to submit a written request to receive an absentee ballot
- Applications can be found online at [www.deltami.gov](http://www.deltami.gov) or [www.michigan.gov/vote](http://www.michigan.gov/vote)
- Applications can be returned by
  - o Mail – 7710 W. Saginaw Hwy Lansing, MI 48917
  - o Email [deltatwp21520@deltami.gov](mailto:deltatwp21520@deltami.gov)
  - o Online through [www.michigan.gov/vote](http://www.michigan.gov/vote)
  - o In person at the Delta Township Clerk’s Office
  - o Drop Boxes – north & east sides of Township Administration Building

### Automatic Permanent Absent Voter Application List

Delta Township maintains a list of voters who automatically are mailed an application for an absentee ballot for all elections scheduled in Delta Township.

To be placed on our Automatic Permanent Absent Voter Application List

- Call the Clerk’s Office Monday-Friday 8 a.m.-5 p.m. at 323-8500.
- Submit online at [www.deltami.gov](http://www.deltami.gov)

### Returning Your Absentee Ballot

There are several options for returning your Absentee Ballot

- Mail your ballot back to the Delta Township Clerk’s Office
- Return your ballot to the Delta Township Clerk’s Office
- Box located inside the Administration Building at Clerk’s Office (east entrance)
- Outdoor walk-up Drop Box on east side of Township Administration Building.
- Outdoor drive-up Drop Box on the north side of the Township Administration building

Make sure to follow all instructions for properly filling out your Absentee Ballot, including signing the outside of your envelope prior to return. Your ballot **must be returned to the Delta Township Clerk’s Office by 8 p.m. on Election Day**. Ballots arriving after Election Day will not be counted per Michigan Election law.

### Picture ID Requirement When Voting in Michigan

Michigan voters who vote at the polls and in-person absent voter requests must comply with the requirement of showing picture identification. The most common sources of picture identification are your driver’s license or a state ID card. The following forms of picture identification may also be used if they are current:

- Federal or state government-issued photo identification (Driver’s license or state identification card from any state).
- U.S. passport
- Military ID card with photo
- Student ID card with photo from high school or an accredited institution of higher education
- Tribal ID card with photo.

Voters without picture identification: Michigan election law anticipates that not all voters will have picture identification. Voters who do not bring picture identification to the polls or do not possess picture identification can vote by signing an affidavit of voter not in possession of identification.

### **Military and Overseas Voter Empowerment Act (“MOVE Act”)**

The MOVE Act as signed into law affords all active uniformed service, spouse, dependents, and merchant marine, stationed inside or outside the United States and civilians residing indefinitely or temporarily overseas the option of requesting an “electronic” transmitted, faxed or mailed absentee ballot. The voter must submit a written request or utilize the FPCA form requesting ballot every calendar year (January 1-December 31) and must be filled out in its entirety. The FPCA completed form can be utilized to register to vote and/or apply for absentee ballot and can be emailed to [deltatwp21520@deltami.gov](mailto:deltatwp21520@deltami.gov) or faxed to 323-8599 to the attention of the Clerk’s Office. The FPCA form used for this request is available at our website at [www.deltami.gov](http://www.deltami.gov) for your convenience. Additional information including contact information for Michigan’s city and township clerks, sample ballots for you to view for upcoming election or candidate and proposal information can be viewed through the Michigan Voter Information Center (MVIC) Website maintained by the Michigan Department of State at [www.mchigan.gov/vote](http://www.mchigan.gov/vote).

### **Election Worker Recruitment for 2022 Elections Delta Township is seeking election workers for the following positions:**

- Electronic Pollbook Inspectors
- Help Desk Inspectors
- General Inspectors
- Absent Voter Counting Board Inspector

All positions are paid positions, \$12-\$18/hr. based on the position. To qualify to work in Delta Township, an individual must be a registered voter within state of Michigan, have no felony convictions, complete an application, and attend mandatory training prior to every election. The positions require applicants to be available for long hours on Election Day.

If interested, please contact the Delta Township Clerk’s Office at 323-8500 or stop by the office to complete an application at 7710 West Saginaw Highway, Lansing, MI.

[www.deltami.gov](http://www.deltami.gov)

## **Passport Drive**

The Delta Township Clerk’s Office accepts passport applications during regular office hours Monday-Friday by **appointment only**. If you are planning travel internationally it is recommended applicants apply 4 to 6 months prior to travel dates. Processing of routine passport applications is taking eight to eleven weeks and expediting applications for additional fees are taking five to seven weeks with additional mail time of two to four weeks added onto the projected processing times. The passport processing time **DOES NOT** include any mail time, therefore applicants should add two to four weeks for mailing time of your passport applications on top of the projected processing time. Passport applicants should be prepared and plan accordingly for all upcoming travel requiring passports. Correct passport fees submitted with the application will be required in **check form only**. Applicants with incorrect payment cannot be accepted and the appointment will be rescheduled.

The Delta Township Clerk’s Office has offered several dates in 2022 with extended hours for passport drives. There is one more passport drive left for 2022. The Delta Township Clerk’s Office will be open extended hours on the following date for the acceptance of passport applications (**Form DS-11 ONLY**):

### **2022 Passport Drive**

Tuesday, September 6 – 5-7 p.m.

Please visit the U.S. Department of State website for documentation requirements, fees, and applications at [www.travel.state.gov](http://www.travel.state.gov). Two payments will be required: **(1) Payable to U.S. Department of State for processing of your passport and must be in the form of a personal check or money order payable to the U.S. Department of State** and **(2) Payable to Delta Township for the acceptance fee (\$35) for each application and picture (\$12) if purchased through Delta Township.** One official passport quality photo is required when submitting a passport application (**Form DS-11 ONLY**) and can be obtained at the Clerk’s Office. The fee(s) due to Delta Township can be by cash, check, or credit/debit card. To schedule an appointment or for questions or further information please call the Delta Township Clerk’s Office at 323-8500.



# illicit discharges

## OIL AND WATER DON'T MIX



Most oil pollution looks different than the pictures you see of oil covered beaches after a major spill or accident. In fact, poorly maintained vehicles are one of the largest causes of oil pollution in our waterways. Leaking automotive fluid goes from your car to the street, from street to storm drain, and from the drain directly into our rivers, lakes, and streams. This impacts aquatic habitats and makes waters unsafe for human recreation. With over 250 million cars on the road, these small spills add up to big problems. It's estimated that Americans spill 180 million gallons of used oil each year. That's 16 times the amount spilled during the Exxon Valdez disaster! By quickly fixing leaks, you can help protect both your vehicle and our water resources.

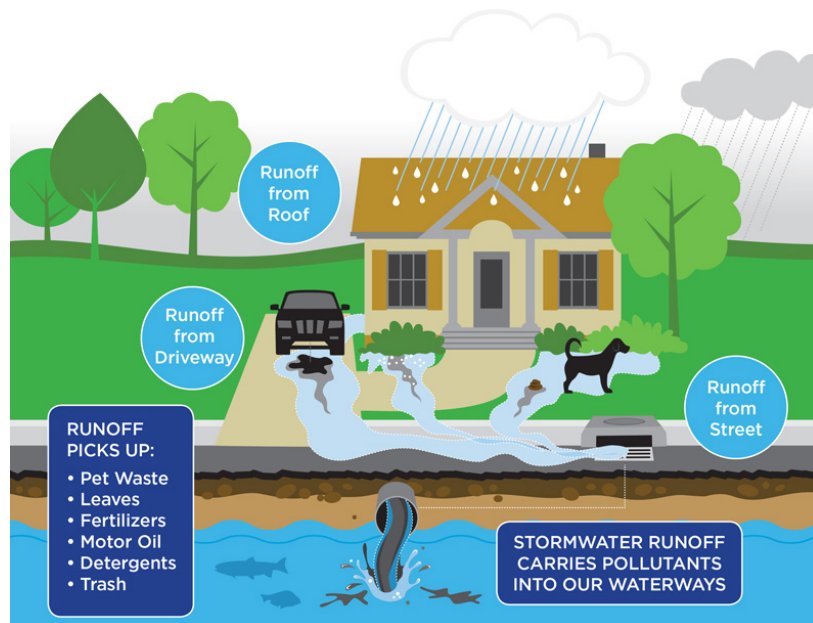
While checking for leaks and resolving them helps, it's not just leaking fluids that cause issues. When washing a vehicle on pavement, the soap suds, grease, oil, and sediment that rinse off your car or lawn equipment also become stormwater pollutants.

Worse yet, this pollution is not an isolated problem that only impacts the neighborhood or local waterway where the leaks or spill occur. As part of the Grand River watershed, runoff in the Lansing area eventually enters the Grand River. From there, water flows from the mouth of the river in Grand Haven and into Lake Michigan. This means that hazardous chemicals on the ground at home impacts our local waterways, the Great Lakes, and beyond!



### Help Keep Our Waterways Clean

- Repair any leaks and drips from your automobile. This includes: motor oil, transmission fluid, anti-freeze/coolant, power steering fluid, brake fluid, gasoline and other lubricants. Remember, these chemicals are also dangerous to your pets.
- If you choose to change your own oil, do not dump the used oil in the yard, on your driveway, or in a storm drain. Find a local firm that will recycle the used oil.
- Do not use used motor oil to control dust on gravel driveways.
- Wash your car on the grass to filter out impurities or take it to a commercial car wash where the water is reclaimed (check local ordinances first).
- Basic automobile maintenance such as tune-ups, proper tire inflation, and efficient driving practices save on fuel, as well as water and air pollution.
- Abandoned automobiles should be taken to a scrap yard or donated to a local charity. Old cars sitting out in a field will leak oil and fuel.



## FALL YARDCARE TIPS

### TO PROTECT OUR STORMWATER



## REDUCE

### POLLUTION

Raking leaves prevents pollution by keeping them out of storm drains, which carry leaves directly to local lakes and rivers. These decomposing leaves contain excessive nutrients that can harm water quality, clog storm drains, and lead to flooding.



## REUSE

### FERTILIZER

Extra nutrients like nitrogen and phosphorus are great for lawn fertilizer! Instead of bagging leaves, you can mulch them into small pieces using a lawnmower and spread them across your yard.



## RECYCLE

### COMPOST

Don't want to spend time bagging leaves or spreading them across your lawn? Backyard composting of organic waste creates natural soil additives for use on lawns and gardens, and can be used as potting soil for house plants.



**GREATER LANSING  
REGIONAL COMMITTEE  
FOR STORMWATER MANAGEMENT**

[www.mywatersheds.org](http://www.mywatersheds.org)

# recycling programs

## Delta Township Recycling Center

5717 Millett Highway

### Winter Hours:

**November-March**

Tuesdays – 8 a.m.-4 p.m.  
Wednesdays – 12-6 p.m.  
Saturdays – 8 a.m.-4 p.m.

### Summer Hours:

**April-October**

Tuesdays – 8 a.m.-4 p.m.  
Wednesdays – 12-8 p.m.  
Saturdays – 8 a.m.-4 p.m.

### Closed Holidays

The Recycling Center will be closed:  
September 3, November 26,  
and December 24.

\*Residential Use Only -  
No Commercial\*

## 2022 Yard Waste Rates

\$1.25 per 30-gallon paper bag or  
\$8.50 per cubic yard

### Vehicles

Based on Average Approximate  
Depth

S10 Pickup – \$12 level load (1.4  
cubic yard)

Full Size Pickup – \$23 level load (2.7  
cubic yard)

Mini Van w/open back – \$8.50 per  
foot (1 cubic yard)

### Trailers

4'x6' – \$6 per foot (.9 cubic yard/  
foot)

4'x8' – \$8 per foot (1.2 cubic yard/  
foot)

5'x8' – \$10 per foot (1.5 cubic yard/  
foot)

6'x10' – \$15 per foot (2.2 cubic yard/  
foot)

## Accepted Recycling Items

Delta Township's Recycling Center accepts the following products or materials to be recycled: cooking oil, polystyrene foam, household batteries (please tape the circuits on lithium, 9 volt and larger batteries), cellular phones, ink cartridges, plastics with #1-7 symbol on bottom, metals, clear and colored glass, paper, boxboard, CFL bulbs, and phone books. Please remove all lids and caps from plastic containers prior to recycling. Pop or beer box containers, containers designed to go in the freezer or refrigerator, or plastic containers that hazardous waste comes in, such as motor oil or anti-freeze, are not accepted. For a complete listing of items accepted at the Delta Township Recycling Center and to obtain the monthly recycling newsletter visit [www.deltami.gov](http://www.deltami.gov).

## Fall De-Leafing

Yard waste recycling will be available free to Delta Township residents only, October 15-December 3 on Wednesday and Saturday. Please note regular yard waste fees will apply on Tuesday. Identification and resident verification is required.

## Yard Waste

Yard waste will be accepted through October

12 and open to all Delta Township residents. Fees apply (see left) and identification and resident verification is required. Please call the Clerk's Office at 323-8550 if you have any questions.



## Electronics Recycling

Delta Township offers a monthly (Saturday) event for electronics and freon recycling. A fee of \$.50 per pound will be charged for electronics and a fee of \$20 each will be charged for freon containing items. Examples of electronics include microwaves, PCs, laptops, servers, printers, copiers, scanners, LCD screens, plasma/LED/flat screens, CRT monitors, CRT televisions, projections, monitor/televisions, cell phones, answering machines, and remote controlled items. Collections of these items will take place between 9 a.m. and 12 p.m. on the following remaining dates for 2022: 9/17, 10/29, 11/19, & 12/17. There will be no collection in October or November. A fee of \$30 will be charged for the recycling of carbon monoxide and smoke detectors. For questions or more information please call the Clerk's Office at 323-8500.

## Bicycles

Bicycles are accepted in any condition at the recycling center. They are refurbished and returned to the community by The Kids Repair Program. Volunteers are needed to work with staff to teach kids bike repair, bike safety, and bike maintenance. Volunteers may also help with supply inventories, grant writing, office support, or public relation materials. For more information call 517-755-4174.

## American Flag Disposal

Boy Scout Troop 111 has located their American flag collection container at the recycling center. They will ensure the flags are included in one of their formal flag retirement ceremonies.

Delta Charter Township  
7710 West Saginaw Highway  
Lansing, MI 48917

ECRWSS  
PRSTD STD  
U.S. Postage  
PAID  
Permit No. 718  
Lansing, MI

## RESIDENTIAL CUSTOMER

**Delta Township  
Administrative Offices**  
7710 West Saginaw Highway  
323-8500, 323-8599 (Fax)  
Monday-Friday 8 a.m.-5 p.m.

**Waverly East  
Intermediate Pool**  
3131 West Michigan  
(office located at the  
Enrichment Center,  
4538 Elizabeth Road)  
484-5600  
Monday-Friday 10 a.m.-3 p.m.

**Hillside Cemetery**  
6415 Delta River Drive  
Information: 323-8500

**Delta Center Cemetery**  
7301 West St. Joe Highway  
Information: 323-8500

**Enrichment Center**  
4538 Elizabeth Road  
484-5600  
Rental Information: 323-8555

**Delta Township  
District Library**  
5130 Davenport Drive  
321-4014  
<http://www.dtdl.org/>  
[@deltatwplibrary](mailto:@deltatwplibrary)



**Recycling Center**  
5717 Millett Highway  
Information: 323-8500

**April 1-October 31**  
Tuesday 8 a.m.-4 p.m.  
Wednesday 12-8 p.m.  
Saturday 8 a.m.-4 p.m.

**November 1-March 31**  
Tuesday 8 a.m.-4 p.m.  
Wednesday 12-6 p.m.  
Saturday 8 a.m.-4 p.m.

**Joseph E. Drolett  
Community Center**  
7550 West Willow Highway  
Rental Information: 323-8555

**Delta Fire Station #1**  
811 North Canal Road  
321-6622 (Non-Emergency)  
Monday-Friday 8 a.m.-5 p.m.

**Delta Fire Station #2**  
7720 W. Grand River Ave.  
Grand Ledge, MI 48837

**Delta Fire Station #3**  
215 Snow Road

**Eaton County Sheriff/  
Delta Patrol**  
7708 Administration Drive  
372-8217 (Non-Emergency)  
Monday-Friday 8 a.m.-5 p.m.

**EATRAN** 371-3312 (Eaton Co.)

**Anderson Park**  
3207 Wardell Road

**Delta Mills Park**  
7001 Old River Trail

**Erickson Park**  
4220 South Canal Road

**Grand Woods Park**  
4500 West Willow Highway

**Hawk Meadow Park**  
6160 Delta River Drive

**Hunter's Orchard  
Park**  
7242 Old River Trail

**Lake Delta**  
3½ miles south of Saginaw  
Highway on Canal Road

**LeLand Park**  
½ mile west of Waverly on  
St. Joe Highway

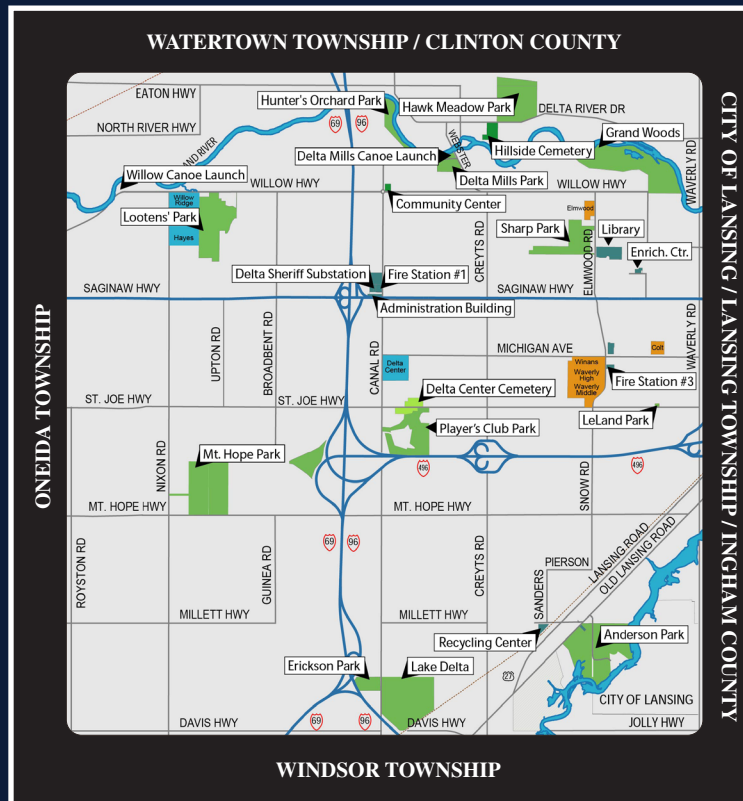
**Lootens Park**  
East of Nixon Road on  
Willow Highway

**Mount Hope Park**  
7419 East Mt. Hope Highway  
Grand Ledge

**Player's Club**  
925 South Canal Road

**Sharp Park**  
1401 Elmwood Road

**Willow Canoe Launch**  
6507 Willow Highway  
Grand Ledge



*For a department directory including phone numbers and an overview of responsibilities, please see page 3.  
Unless specified, all addresses are Lansing, MI 48917.*