


Delta Magazine

Spring 2021

www.deltami.gov ■ 323-8500



ALL YOU
NEED
IS...
BE HAPPY!!
HAVE A
GREAT
DAY!

I AM  DELTA



Supervisor Kenneth R. Fletcher
KFletcher@deltami.gov



Clerk Mary R. Clark
MClark@deltami.gov



Treasurer Dennis R. Fedewa
DFedewa@deltami.gov



Trustee Elizabeth (Beth) S. Bowen
BBowen@deltami.gov



Trustee Fonda J. Brewer
FBrewer@deltami.gov



Trustee Andrea M. Cascarilla
ACascarilla@deltami.gov



Trustee Karen J. Mojica
KMojica@deltami.gov

From the Township Board

What a difference a year makes. As you read the Delta Magazine last year around this time, few of us knew what we would be in for the rest of the year. As a Township, we were able to navigate through last year and maintain most of our quality services for our residents. We thank you for your patience and understanding as many of our programs and recreational opportunities had to be cancelled or altered to follow safety guidelines.

Thankfully, there is light at the end of the tunnel. We look forward to returning many of our recreational opportunities for youth and for adults. While it is our hope to return all programming to normal sooner rather than later, safety is always our first concern!

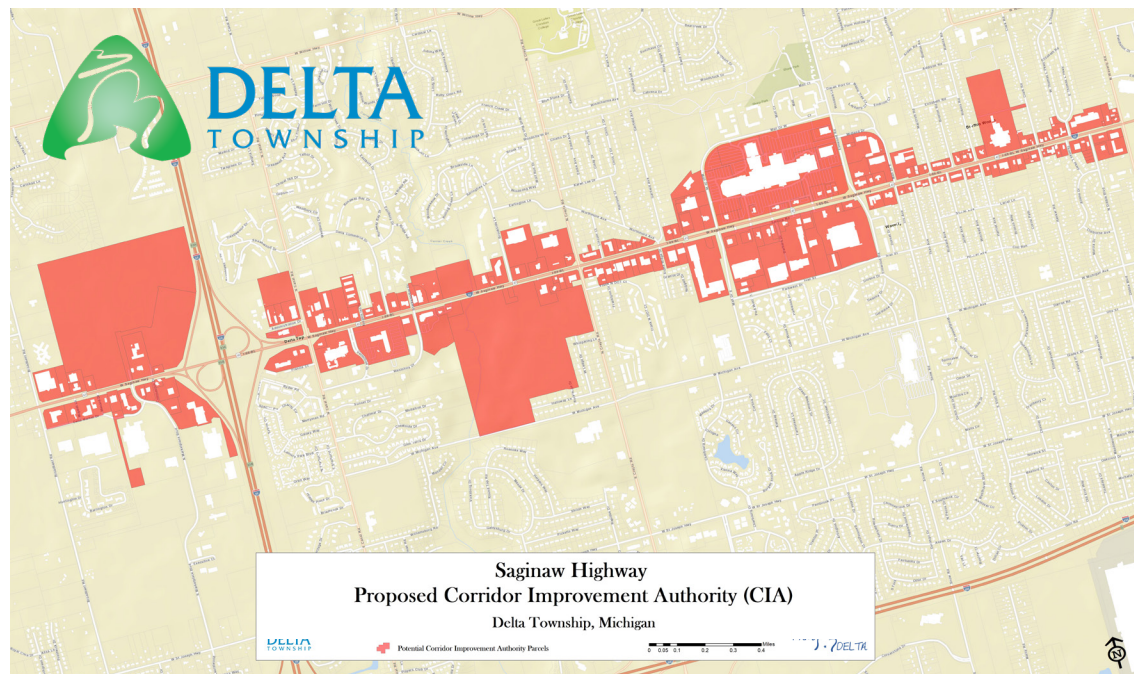
Economic Development

In addition to the excitement of programming returning, there is a lot of economic development work moving forward in the Township. As we get through the pandemic, helping our businesses get back on their feet is extremely important. That is why Delta Township is happy to welcome Collin Mays as our new Community and Economic Development Coordinator. Collin joins us from the city of Center Line where he served in a similar role. This position is important as it serves as a conduit for business and industry to allow us to understand the needs and problems of our local businesses and help facilitate solutions.



The Township is also working to develop its first Corridor Improvement Authority (CIA) along Saginaw Highway. A CIA is designed to assist economic development and redevelopment in established commercial districts. It allows communities to utilize Tax Increment Financing to assist with public improvement projects and economic development. You can find more information regarding the Corridor Improvement Authority on our newly designed website at deltami.gov/CIA.

We hope that 2021 proves to be a great year for all Delta residents.





IN THIS ISSUE:

- 2 Letter from the Board
- 3 Table of Contents
- 4 Senior Adult Recreation (50+)
- 6 Youth and Adult Athletics
- 9 Special Events
- 10 Youth and Adult Enrichment Classes
- 11 Library Programs and Information
- 12 Utility Information
- 14 Election Information
- 16 Passport Drives/Tax Information
- 17 Safety Tips from Sheriff and Fire Depts.
- 18 Rental Facilities
- 19 Recycling Information
- 20 Township Locations and Addresses



COVER IMAGE

East West Pathway - Positive messages drawn with chalk on the pathway by the residents during the shutdown in 2020. The pathway is used by thousands of area residents year-round and runs from Canal Road past the Delta Township Library to Maycroft.

Design and layout: Kathy Sobczyk. Please email ksobczyk@deltami.gov with comments or questions regarding this publication.

DELTA TOWNSHIP DEPARTMENT DIRECTORY

ACCOUNTING/TREASURER DEPARTMENT Water/Sewer Bills Tax Collections	323-8510
ASSESSING DEPARTMENT Property Information/Assessed Valuations Weed Ordinance Enforcement	323-8520
BUILDING DEPARTMENT Building, Electrical, Mechanical, Plumbing, Remodeling Permits Sewer Capital Charges Code Enforcement Sign Permits	323-8530
CLERK'S OFFICE Board of Trustee Information Voter Registration and Elections Passports Recycling Cemetery Lots	323-8500
EATON COUNTY SHERIFF/DELTA PATROL Emergency: 911 Non-Emergency	323-8480 372-8217
ENGINEERING DEPARTMENT Sanitary Sewer and Water Location Information	323-8540
FIRE DEPARTMENT Emergency: 911 Burning Permits Fire Code Inspections	321-6622
LIBRARY Books, Magazines, and Audio Books Movies and Music	321-4014
MANAGER'S OFFICE Administration, Budget, Human Resources Information Technology FOIA Requests	323-8590
PARKS, RECREATION & CEMETERIES DEPT. Athletics and Special Events Community Education Classes Park Shelters and Ball Fields Facility Reservations	323-8555
39'ERS AND AQUATICS OFFICE 50+ Programs (Senior Citizens Programs) Aquatics	484-5600
PLANNING DEPARTMENT Zoning Ordinance Enforcement New Developments Planning Commission Economic Development	323-8560
UTILITIES DEPARTMENT After-Hours Emergency Water/Sewer Problems	323-8570 323-8570

senior adult recreation

The Delta 39'ers (50+) are in the Delta Enrichment Center (4538 Elizabeth Road). Office hours are Monday-Friday, 10 a.m. to 3 p.m., the phone number is 484-5600.

The office will be closed and there will be no activities on 4/2, and 5/31. All activities cancelled after 2:30 p.m. on 5/3 and all day 5/4.

Registration

Pre-registration is required for all activities, unless noted with an *. Registration for classes begins **Tuesday, March 16, at 8 a.m.**, register at any time for trips.

39'ers Newsletter

Interested in receiving the 39'ers Newsletter? Call the office with your mailing address or email address and we will add you to our mailing list.

39'ers Gift Certificates

39'ers offer gift certificates in a variety of denominations. Gift certificates can be used for trips, classes, footcare, and chair massage. A great gift for any occasion.

Library*

Books and jigsaw puzzles are available. We have a take one, leave one system.

Golf Leagues

Men's League or Women's League

Tu, 4/27-9/21, Tee Time 7-9 a.m.
Ledge Meadows Golf Course, \$25

Health Services

Foot Care

Includes: Toenail cutting, foot bath, and foot massage. Minor calluses and rough areas. Corns are a medical procedure therefore this procedure is not performed. Three days a month. Call for an appointment. \$30

Pacers Walking Club*

Walk daily year-round. Sign up by logging your miles in the Food Court. Monthly newsletters with information on activities and events.

**Mall opens at 10 a.m. for walkers, Free,
Lansing Mall (Food Court)**

Trips

Detroit Tigers Baseball Game

Includes: motor coach transportation, food voucher, and ticket.

Not Included: bus driver's tip (\$1-\$2 per person suggested). TBA, Call 484-5600 for more information. SR805

Dow Gardens & Canopy Walk

Enjoy the acres of gardens and the longest canopy walk in the country.

Includes: motor coach transportation, admissions, and box lunch. Sandwich choices: Chicken Salad, Turkey Club, or Ham. Box lunch also includes: bag of chips, cookie, and a bottle of water.

Not Included: bus driver's tip (\$1-\$2 per person suggested). Registration deadline: 6/11

Th, 7/15, 8:45 a.m.-6:15 p.m., \$74, SR809

Mackinac Island/Grand Hotel

4 Day/3 Night Package

Includes: motor coach, ferry, and horse drawn taxi transportation; Grand Hotel lodging (rooms are luck of the draw), baggage handling, three breakfasts, three buffet lunches, and three five-course dinners, carriage tour, and many special activities. Do as much or as little as you want.

Not included: lunch on way home, bus drivers' tips, taxi drivers' tips, and carriage tour driver's tips (\$1-\$2 per person suggested). Early Bird Discount of \$25 per person if you register before 5/25. Trip Insurance recommended. No refunds after the final payment deadline of 8/20 unless someone is found to fill your spot. Call 484-5600 for more information.

M-Th, 10/25-10/28,

Double Occupancy \$940, Single Occupancy \$1,135,

Triple Occupancy \$940, prices are per person.

SR807



Fitness & Exercise Classes

Jazzercise LO*

Build balance and flexibility, tone your whole body, charge up your metabolism. Modified movements/ lower intensity for all fitness levels. T/Th, ongoing, 3:30-4:25 p.m., \$52 (16 classes), prorating and \$5 drop in fee, register in class, Community Center

Senior Barre Fitness

A full-body workout that combines ballet-based movements, weight conditioning, core-focused exercise, and stretching by emphasizing precision, and form. Please wear soft-soled shoes (i.e.: Isotoner slippers or socks). M/W, 4/5-5/26, 11:30 a.m.-12:15 p.m., \$64 (16 classes), SR2720, Community Center

Senior Core and More

Focusing on the core namely your abdominal muscles and lower back. These exercises will develop strength, balance, flexibility, and joint stability. Beginners are welcome. Bring water, a mat, and towel with you. M/W/F, 4/5-4/30, 9:30-10:15 a.m., \$48 (12 classes), SR2721a, M/W/F, 5/3-5/28, 9:30-10:15 a.m., \$48 (12 classes), SR2721b, Community Center

Tai Chi

Tai Chi Qigong Shibashi

Easy and beginning class in which you will learn the movements. Th, 4/8-5/27, 10:10-11:10 a.m., \$48 (8 classes), SR2701, Room 303

Tai Chi Beginning

Putting the movements into flowing rhythmic patterns. Th, 4/8-5/27, 11:15 a.m.-12:15 p.m., \$48 (8 classes), SR2702, Room 303

Yoga*

Gentle yoga which includes stretching and strengthening. Tu, 10-11 a.m.
Tu, 11:30 a.m.-12:30 p.m.
W, 10-11 a.m.
F, 10-11 a.m.
\$2 drop-in fee per class, Room 304

Zumba Gold

Dance-fitness workouts specifically designed for the active older adult. M/W/F, 4/5-4/30, 10:30-11:15 a.m., \$48 (12 classes), SR2717a
M/W/F, 5/3-5/28, 10:30-11:15 a.m., \$48 (12 classes), SR2717b, Community Center

Classes

Genealogy

Getting started, the resources, and how to preserve your information. Tu, 4/6-6/1 (no class 5/4), 1-3 p.m., \$32 (8 classes), SR2723, Room 302
Tu, 4/6-6/1 (no class 5/4), 6-8 p.m., \$32 (8 classes), SR2724, Room 302

Intro to Creative Writing

Learn or improve techniques for translating imagination to the written page. Nurture existing ideas. Discover new ones. All writing levels welcome (supply fee included). W, 4/7-5/26, 6-8 p.m., \$77 (8 classes), SR2749, Room 302
Th, 4/8-5/27, 3-5 p.m., \$77 (8 classes), SR2756, Room 302

Learn To Crochet – All Levels

Basics to learning techniques and troubleshooting. F, 4/9-5/28, 10:15 a.m.-12:30 p.m., \$32 (8 classes), SR2746, Room 304

Learn To Knit – All Levels

Basics to learning techniques and troubleshooting. M, 4/5-5/24, 10:15 a.m.-12:30 p.m., \$32 (8 classes), SR2745, Room 304

CONTINUING EDUCATION

Covid-19 Information

Thank you for being a loyal and supportive patron of Delta Township 39'ers. We appreciate your patience and understanding during this time. Delta Township is committed to the health and safety of our participants. The township is continuing to monitor the Covid-19 pandemic as the situation continues to change. In keeping with the evolving regulations all activities and events are subject to postponement or cancellation. You will be notified of any changes if you are enrolled in a class.

The following safety measures have been put in place for the safety of everyone.

Class and activity offerings and class sizes are limited to comply with social distancing guidelines, a mask or face covering must be worn at all times when inside a Delta Township building, participants are asked not to arrive more than 5 minutes before class time or congregate after the ending of the class. Please do not come to class if you are not feeling well.

Additional requirements may become necessary and will be communicated as needed.

sports programs

All of our youth athletic programs are recreational in nature. Each program will introduce the child to the basic skills of that sport while stressing the fundamentals and fun of the game.

For all athletic program details and online registration links, please visit each sports link on our township website at https://www.deltami.gov/departments/parks___recreation/athletic_programs/index.php

All program dates are “anticipated” for the 2021 season. Programs are subject to change due to any COVID restrictions/executive orders that may be in place when programs begin.



Youth Athletics

Youth Basketball Camp

High intensity, multi-tasking drills will be used to increase mental and physical speed of play. Basketball University will supply the instructors and equipment. No refunds after 5/5/2021.

Deadline: T, 5/4/21

Dates: W, 5/5, 5/12, 5/19, 5/26

Grade/Time:

1st/2nd – 5:45 p.m.

3rd/4th – 6:45 p.m.

5th/6th – 7:45 p.m.

Fee: \$30/Res.; \$35/Non-Res.

Location: Waverly East

Gymnasium (possibly outside at Delta Mills Park)

Youth T-Ball

Participant can choose the Monday/Wednesday program (starting 6/14) or Tuesday/Thursday program (starting 6/15). The programs run for six weeks. No refunds after the first day of the program.

Deadline: F, 5/21/21

Age: 4-6 (4 & 5/6) as of first day of program (6/14 & 6/15)

Fee: \$40/Res.; \$45/Non-Res.

\$10 late fee after 5/21/21 if space permits. Late fees are not refundable.

\$15 for athletic jersey if needed

Location: Mount Hope Park

Youth Girls Softball – Coach Pitch

This program runs on Mondays and Wednesdays and starts on June 14 and runs for six weeks. No refunds after 6/14/21.

Deadline: F, 5/21/21

Age: 6-11 as of 6/14/21

(6-8 & 9-11)

Fee: \$40/Res.; \$45/Non-Res.

\$10 late fee after 5/21/21 if space permits. Late fees are not refundable.

\$15 for athletic jersey if needed

Location: Mount Hope Park

Youth Boys Baseball – Coach Pitch – Ages 6/7

This program runs on Tuesdays and Thursdays, starts on June 15 and runs for six weeks. No refunds after 6/15/21.

Deadline: F, 5/21/21

Age: 6/7 as of 6/15/21

Fee: \$40/Res.; \$45/Non-Res.

\$10 late fee after 5/21/21 if space permits. Late fees are not refundable.

\$15 for athletic jersey if needed

Location: Mount Hope Park

Youth Boys Baseball – Machine Pitch – Ages 8/9

The program runs on Tuesdays and Thursdays, starts on June 15 and runs for six weeks. No refunds after 6/15/21.

Deadline: F, 5/21/21

Age: 8/9 as of 6/15/21

Fee: \$40/Res.; \$45/Non-Res.

\$10 late fee after 5/21/21 if space permits. Late fees are not refundable.

\$15 for athletic jersey if needed

Location: Mount Hope Park

Youth Fall Soccer/Flag Football

Both programs begin August 28 and run on Saturdays for 6 weeks. Practices will start the week of August 15. No refunds after 8/28/21.

Deadline: F, 7/30/21

Age: 4-10 as of 8/28/21

Fee: \$40/Res.; \$45/Non-Res.

\$10 late fee after 7/30/21 if space permits. Late fees are not refundable.

\$15 for athletic jersey if needed

Locations: Mount Hope Park

Fall Itty Bitty Kickers – 3 Year Olds Soccer

Practices and games will be held on Saturdays within a 40 minute time block. 4x4 rules and size 3 soccer ball will be used. The program starts August 28 and runs on Saturdays for 5 weeks. No refunds after 8/28/21.

Deadline: 7/30/21

Age: 3 years old as of 8/28/21

Fee: \$25/Res; \$30/Non-Res, \$10 late fee after 7/30/21, if space permits.

Late fees are not refundable. \$15 for athletic jersey if needed

Location: Mount Hope Park

Coaches' Meeting Information

All Meetings will be held at the Delta Township Administration Building in Room A.

T-Ball, Baseball, and Softball

Wednesday, June 2, 2021 at 6 p.m.

Fall Soccer & Itty Bitty Kickers

Wednesday, August 11, 2021 at 6 p.m.

Flag Football

Wednesday, August 11, 2021 at 7 p.m.

Youth Tennis Lessons

This instructional tennis program is designed to teach basic fundamentals strokes, rules, etiquette, scoring, and playing points in a group environment. Tennis participants will need to supply a racket. Instructors are provided by Court One Athletic Club.

Ages: 5-15 as of first day of class
Fee: \$40/Res; \$45/Non-Res. per session

Days: Tu & Th

Times:

Ages 5-7: 9-9:55 a.m.

Ages 8-11: 10-10:55 a.m.

Ages 12-15: 11-11:55 a.m.

Dates:

Session 1: 6/15/21-7/1/21

Session 2: 7/20/21-8/5/21

Deadlines: Session 1: 6/11/21;

Session 2: 7/16/21

Location: Sharp Park Tennis Courts

Youth Golf Lessons

This instructional golf program is designed to teach full swing fundamentals, driving, approach shots, chipping, putting, bunker shots, etiquette, rules, and scoring. Golf participants will need to supply their own clubs. Each participant will receive a green fee pass (9 holes) for two players which can be used any time after the golf lessons are completed.

Ages: 5-13 as of first day of class; Fee: \$40/Res; \$45/Non-Res. per session

Days: M & W

Times: Ages 5-8: 9-10:15 a.m.; Ages 9-13: 10:30-11:45 a.m.

Dates:

Session 1: 6/14/21-6/30/21; Session 2: 7/19/21-8/4/21

Deadlines: Session 1: 6/11/21; Session 2: 7/16/21

Location: Grand Ledge Country Club

Adult Athletics

Adult Softball

Summer Leagues Offered:

Mens DbI- 20 games: M, Tu, Th

Coed DbI- 20 games: W, F

Coed Single- 10 games: W, Th

Team Registration:

The sponsor fee is due at the time of registration. Sponsor fees are not refundable unless another team is found as a replacement.

Summer League Fees:

Men's Doubleheader

Early – \$225 (3/1-3/5)

Regular – \$275 (3/8-3/26)

Late – \$325 (3/29-4/2)

Coed Doubleheader

Early – \$265 (3/1-3/5)

Regular – \$315 (3/8-3/26)

Late – \$365 (3/29-4/2)

Coed Single

Early – \$165 (3/1-3/5)

Regular – \$215 (3/8-3/26)

Late – \$265 (3/29-4/2)

Player Fees:

All players are required to pay a \$15 player fee for each team they play on.

Umpire Fees: (per team/per game)

Men's Doubleheader – \$20/game

Coed Doubleheader – \$15/game

Coed Single – \$15/game

Softball Managers' Meeting:

W, 4/14/21 at 6:30 p.m. at the

Delta Township Administration Building in Room A.

Softball Season Begins:

Week of April 25, 2021

Adult Coed Sand Volleyball Leagues

Leagues are 4 vs 4 – coed rules apply (2 males, 2 females). Teams provide their own volleyball. Limited spots available. Teams are taken on a first come, first serve basis. For league rules and registration form please visit our website at www.deltami.gov/parks.

Deadline: F, 7/9/21

Season Begins: W, 7/21/21

Fee: \$100/team (10 games)

Location: Sharp Park Volleyball Courts

Adult Coed Kickball Leagues

Do you miss those fun games of kickball? Are you looking to get together and have fun with your friends? Then sign up now and join our Adult Co-Ed Kickball League! For league rules and registration form please visit our website at www.deltami.gov/parks.

Deadline: F, 4/9/21

Leagues: M or W

Season Begins: M, 4/26 & W, 4/28

Fee: \$150/team (10 games)

Location: Sharp Park & Delta Mills Park



new youth programs

Youth Kickball

Kickball is all about the FUN! Like baseball, this playground favorite is played with traditional baseball rules with a few extra quirky rules mixed in. Instead of a bat and ball, kids kick, catch, and throw an 8.5" playground ball, meaning that anyone can join in and

have a great time, regardless of ability or experience! Kids in our youth kickball league will have an opportunity to enjoy a more laid back, youth sports league! The 7-8 and 9-10 year old age groups will be a "Coach Pitch" program and the 11-13 year old league will be a "Player Pitch" program. More rules will be provided upon the start of the program.

Age Groups: 7/8, 9/10, 11-13

Deadline: F, 4/30

Fee: \$25 Res/\$30 Non-Res

\$10 late fee after 4/30/21, if space permits. Late fees are not refundable.

Games: 4 weeks on Mondays, 5/10-6/7

Location: Mount Hope Park



Youth Coed Flag Football

Our flag football program is recreational in nature, introducing the child to the basics of football and stressing fun. This coed program will be for grades K-5th based on the 2020/2021 school year. Participants will be required to wear a Delta Township reversible youth athletic jersey on game days and each team will be given a set of flags for the season. All games and practices will be held at Mount Hope Park. There will be 6 weeks of games on Saturdays beginning April 24. Practices will begin the week of April 12. No refunds after 4/24/21.

Grades: K-5th as of the 2020/21 school year

Deadline: F, 3/19/21

Fee: \$40 Res/\$45 Non-Res

\$10 late fee after 3/19/21, if space permits. Late fees are not refundable.

Games: Saturdays, 4/24-6/5, Make-up 6/12

Location: Mount Hope Park



special events

Outdoor Pint-Sized Picassos – Parent Participation

Let us provide the materials and clean-up while your child provides the creativity. There will be three different projects each week. We will use different types of paints, crayons, glue, collage materials, and more. The easels will also be available every week for the children to use. No need to register in advance.

Th, 5/6-5/27 (4 sessions), 10-11 a.m. , Ages 2-5 (suggested age), \$1 per child per week – adults are free, Outside Room 301, Enrichment Center – restrooms will be available – please dress for the weather

Daddy Daughter Dance at the Park – “Fun in the Sun Beach Theme”

Put on some fun shades and dance to your favorite tunes outside at the park! You will also enjoy refreshments, fun photo opportunities, and more. Pre-registration is required and space is VERY limited. Register now by visiting www.deltami.gov/registration or by calling 323-8555.

Tu, 6/1, 7-9 p.m. (Rain/Weather Date: Tu, 6/2, 7-9 p.m.)

\$10 per person (Delta Township residents); \$12 per person (non-residents)

No refunds after 6/24

Mount Hope Park Ball Diamond

Mother Son Dance at the Park – “Fun in the Sun Beach Theme”

Dance to your favorite tunes outside at the park! You will also enjoy refreshments, fun photo opportunities, and more. Pre-registration is required and space is VERY limited. Register now by visiting www.deltami.gov/registration or by calling 323-8555.

M, 6/7, 7-9 p.m. (Rain/Weather Date: Tu, 6/8, 7-9 p.m.)

\$10 per person (Delta Township residents); \$12 per person (non-residents)

No refunds after 6/1

Mount Hope Park Ball Diamond

Mother Daughter Dance at the Park – “Luau Theme”

A dance just for the ladies! Put on a fun hula skirts and dance to your favorite tunes outside at the park! You will also enjoy refreshments, fun photo opportunities, and more. Pre-registration is required and space is VERY limited. Register now by visiting www.deltami.gov/registration or by calling 323-8555.

M, 8/2, 7-9 p.m. (Rain/Weather Date: Tu, 8/3, 7-9 p.m.)

\$10 per person (Delta Township residents); \$12 per person (non-residents)

No refunds after 7/26

Mount Hope Park Ball Diamond



Coming Soon!

Watch on facebook and in the upcoming Summer Magazine for more exciting special events such as movies and music in the park!

Easter Bunny Meet & Greet at the Park

The Easter Bunny will be visiting Delta Township’s newest park for a meet and greet. Don’t forget to bring your camera



to get a picture. Children will have the opportunity to participate in an Easter craft. No need to register in advance. W, 3/31, 6-7 p.m. (rain date: Th, 4/1) Mount Hope Park near the Shelter Free

Kids Mud Run

Come on out for the 8th Annual run. Obstacles will include a hay climb, over-under wall, pool noodle hurtles, several mud pits, balance beams, and much more! One parent/adult will be allowed to run with each child. The cost is \$10 for Delta Township residents and \$12 for non-residents. The fee includes the run, a headband for the paid participant, and more. Register online by visiting www.deltami.gov/registration. Call 323-8555 for other registration options. Limited registrations will be available the day of the run at a fee of \$15. Please note that some heats might not be available for registration on the day of the run.

Tu, 7/20, heats start at 5 p.m. and run through 7:30 p.m.

Ages 5-15

\$10 Delta Township Resident/

\$12 Non-Resident

\$15 day of run (if space available)

No refunds – run is rain or shine, but we will not run in a storm
Grand Woods Park

youth & adult classes

Zumba – Monday

M, 6:30-7:30 p.m., 4/5-5/24
\$52 Res/\$60 Non-Res
Enrichment Center, Rm 303

Zumba – Thursday

Th, 6:15-7:15 p.m., 4/8-5/27
\$52 Res/\$60 Non-Res
Enrichment Center, Rm 303

Outdoor Zumba

Tu/Th, 10-10:45 a.m., 5/4-5/27
\$32 Res/\$40 Non-Res
Sharp Park Tennis Courts

Zumba Toning & Abs

W, 6:30-7:30 p.m., 4/7-5/26
\$52 Res/\$60 Non-Res
Community Center, Upper Floor

Strength, Flexibility & Core

W, 5:30-6:15 p.m., 4/7-5/26
\$44 Res/\$52 Non-Res
Community Center, Upper Floor

Outdoor Strength, Flexibility & Core

Tu/Th, 9-9:45 a.m., 5/4-5/27
\$32 Res/\$40 Non-Res
Sharp Park Shelter

Pilates – Monday

M, 5:30-6:15 p.m., 4/5-5/24
\$44 Res/\$52 Non-Res
Enrichment Center, Rm 303

Pilates, Ballet, and Barre Fitness

Th, 5:15-6 p.m., 4/8-5/27
\$44 Res/\$52 Non-Res
Enrichment Center, Rm 303

TRX Suspension Training

Session 1: 4/8-4/29, Th, 7-7:45 p.m.
Community Center, Lower Floor
\$28 Res/\$35 Non-Res
Session 2: 5/3-5/26, M/W, 6:15-7 p.m.
Grand Woods Park Pavilion
\$56 Res/\$64 Non-Res

Jazzercise

Tu/Th, 5:45-6:45 p.m.
Ongoing, Starts May 1
\$46/month
Community Center, Upper Level
Call Sandy for info. 517-285-0066

Jazzercise LO

Tu/Th, 9:30-10:30 a.m.
Ongoing, Starts May 1
\$46/month
Community Center, Upper Level
Call Sandy for info. 517-285-0066

Karate- Youth (6-14yrs)

Tu, 6:30-7:30 p.m. Or 7:30-8:30 p.m.
4/6-5/25
\$30/individual
Community Center, Lower Level

Karate for Families

Tu, 6:30-7:30 p.m. Or 7:30-8:30 p.m.
4/6-5/25
\$60/family
Community Center, Lower Level

Karate for Adults (15+)

Tu, 7:30-9 p.m., 4/6-5/25
\$40/individual
Community Center, Lower Level

Little Road Warriors – Learn to Bike

Ages 2-5yrs
W, 5/5-5/26, 10:30-11 a.m.
\$12 Res/\$16 Non-Res
Community Center, Upper Level

Toddler & Me Dance (18 mo.-3yrs)

M, 10:30-11 a.m., 4/5-5/24
\$56 Res/\$64 Non-Res
Sharp Park Shelter

Creative Dance 1 (Online)

Tu, 4-4:30 p.m., 4/6-6/1
3-4 years
\$63 Res/\$72 Non-Res
Virtual on Zoom (12 spots)

Creative Dance 1 (In-Person)

Sat, 9:30-10 a.m., 4/10-6/5 (No Class 5/29), 3-4 years
\$56 Res/\$64 Non-Res
Enrichment Center, Rm 303

Creative Dance 2 (Online)

Tu, 4:35-5:15 p.m., 4/6-6/1
5-6 years
\$63 Res/\$72 Non-Res
Virtual on Zoom (12 spots)

Creative Dance 2 (In-Person)

Sa, 10:15-10:55 a.m., 4/10-6/5 (No Class 5/29), 5-6 years
\$56 Res/\$64 Non-Res
Enrichment Center, Rm 303

Ballet Dance 1 (In-Person & Online)

Tu, 5:20-6:05 p.m., 4/6-6/1
7-9 years
\$63 Res/\$72 Non-Res
Enrichment Center, Rm 303
(5 spots In-Person, 5 spots Online)

Ballet Dance 2 (In-Person & Online)

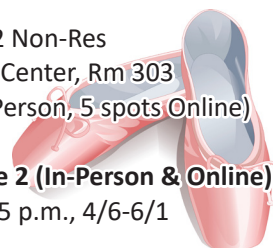
Tu, 7:30-8:25 p.m., 4/6-6/1
9-11 years
\$68 Res/\$77 Non-Res
Enrichment Center, Rm 303
(5 spots In-Person, 5 spots Online)

Jazz Dance 1 (In-Person & Online)

Sa, 11:10-11:55a, 4/10-6/5 (No Class 5/29), 7-9 years
\$56 Res/\$64 Non-Res
Enrichment Center, Rm 303
(5 spots In-Person, 5 spots Online)

Jazz Dance 2 (In-Person & Online)

Tu, 6:20-7:15 p.m., 4/6-6/1
9-11 years
\$68 Res/\$77 Non-Res
Enrichment Center, Rm 303
(5 spots In-Person, 5 spots Online)



All class dates, times, and locations are subject to change

Register by visiting www.deltami.gov/registration • 323-8555

library information

The Delta Township District Library is working hard to ensure the safety of everyone while offering everything possible to keep you up-to-date at home!

Current Business Hours

DTDL is open the following hours for carside pickup and phone/chat assistance:

Tuesday-Friday, 12-6 p.m.

Saturday-Sunday, 12-4 p.m.

Carside Pickup Service

Have your holds delivered to your car with contactless service. In addition to library materials, you can also access remote printing, Take It & Make It kits, BookPage, and more via carside. The service is currently available Tuesday-Friday, 12-6 p.m. and Saturday-Sunday, 12-4 p.m. Materials can be returned in our outdoor book drop 24/7. Visit dtdl.org/carside for more information.

Digital Services

DTDL cardholders have free access to a large variety of services digitally. Enjoy ebooks, audiobooks, comics, movies, music, TV shows, and magazines, get crafty with online art tutorials, learn a new language, and more. For more information, visit dtdl.org/digital.

New Service: Tutor.com

DTDL cardholders now have access to a new digital service, tutor.com! Tutor.com provides on-demand tutoring, homework help, test preparation and writing assistance for students in grades K-Adult in over 60 subjects; offers adult learning and career assistance; and much more. Learn more at dtdl.org/digital.

BookMatch

Are you running out of ideas on what to read and miss browsing the books? DTDL staff can help! BookMatch is the library's personalized reading recommendation service. Answer a few questions about your reading preferences and library staff will respond with personalized suggestions for you or your child. You can choose to receive a list by email or have staff place the books on hold for you for carside pickup. Visit dtdl.org/bookmatch to get started!

Take It & Make It

Looking for fun crafty activities for you or your kids? DTDL offers free Take It & Make It kits for youth and adults, available via carside pickup. Visit dtdl.org/make-it to request a kit.

Virtual @ Your Service

Book a one-on-one appointment with library staff for personalized assistance with digital collections, devices, and more. Each 25-minute appointment can be held online via Zoom or over the phone. Contact Adult Services at 517-321-4014 x4 to make an appointment.

Storytime @ Home

DTDL offers free storytime kits, geared towards ages birth-5, that include a shaker egg, dancing scarf, rhythm sticks, and a song sheet. Families can use these materials to enjoy music time at home and participate along with us during our virtual storytimes. Call 517-321-4014 x3 for more information.

Virtual Programs

Many of DTDL's popular programs have gone virtual, including storytimes, Paws for Reading, book clubs, gaming, homework help, and more. Visit dtdl.org/events for a full schedule and to register for programs. Programs include:

Paws for Reading

2nd & 4th Mondays, 6:30-7:30 p.m.

Practice your reading with Youth Staff and their pets over Zoom.

Homework Help

Mondays, 4-6:30 p.m.

Get one-on-one homework help over Zoom from MSU volunteers.

Zoo in Your Neighborhood

Tuesday, May 4 at 6 p.m.

Potter Park Zoo staff will be sharing animals and cool animal artifacts on Zoom.

New DTDL Website

DTDL's website has a brand new look! The new mobile-friendly website features a fresh design, "Latest News" posts, a "How Do I?" FAQ section, accessibility and translate functions, and information about all of the library's events, services, and collections at your fingertips. Check out dtdl.org to see what's new. For more information about any of the library's services and programs, visit dtdl.org or call 517-321-4014. Follow us on Facebook (@deltatwplibrary) for updates.

utilities information

Want to Save Money on Water and Sewer Bills?

Conserving water, saves money on water and sewer bills. Both the water and sewer bills are based on the amount of water used when connected to the public water and sewer systems.

The only exception to this rule applies to residential customers during the summer months. During the summer months residential customers pay for all the water they use, but the sewer portion of their bill is based on their highest water consumption during the past winter months. This means that customers can use water outdoors for pools, gardens, or even wash their car and only pay for the additional water used, but are not charged sewer charges for that extra water used during the summer months.

Washing cars, taking baths and showers, washing clothes, and dishes are all necessary uses of water, but water customers do have a great deal of control over how much water is used in their homes and yards daily and can vary greatly from household to household.

Customers are encouraged to use all the water they need and want. For those customers who are interested in conservation and saving money too, following are areas that each household may want to consider as a way to conserve water and save money. Even a small leak or drip can add up to a lot of water and drive water and sewer bills higher than necessary. A stream of water 1/8" in diameter can leak 137 gallons per hour (98,667 gallons of water per month).

To minimize water usage, first check for leaks inside your home. Toilets are the most common leak that goes undetected. Many times when a customer has surprisingly received a high water and sewer bill, a leaking toilet is found to be the culprit. When toilets leak, sometimes a small stream of water into the bowl or a low-pitched hissing sound may be noticed.

To check a toilet for leaks, add enough food coloring to the tank in back to change the color of the water. If food coloring shows up in the bowl after 15 minutes without flushing, the toilet is leaking and the rubber plunger in the bottom of the back tank needs to be replaced with one that seals tightly.

Another way that the toilet could cause water to be wasted unnecessarily is if the chain on the handle inside the tank pulls the rubber plunger too high, the rubber plunger may stay in the flush (open) position causing water to run continually through the toilet and down the drain. If this is a problem, adjust the chain so it rises when the handle is pushed, but not so high that it stays up after the toilet flushes.

When replacing toilets or the valve inside the back tank, customers may want to consider buying the water-saving type.

Dripping faucets can also drive a water bill up. Repair and replace them to minimize wasted water and keep water and sewer bills in check. If replacing fixtures, customers may want to consider water saving shower heads and other new products on the market to save water.

Washing machines can also be a high water user in the home. To minimize water used consider adjusting the water level to the



actual size of the load. Using the shortest cycle appropriate to the load being washed can also save on the amount of water used.

When replacing a washing machine, keep in mind that water-saving washing machines can save up to 20 gallons per load over older machines.

In the kitchen, customers who like to drink really cold water may want to keep a pitcher of water in the refrigerator rather than letting it run to get cold each time. Thawing food in the refrigerator or in the microwave rather than under running water would also minimize water usage. To speed up cooking, customers who want to start with hot water on the stove could heat it in the microwave instead of letting the faucet run until the water gets hot.

Ways to save water in the yard or in the garden include checking outdoor hoses, faucets, and sprinkler heads for leaks. Consider using water from a pail rather than leaving the hose run when washing the car. To avoid water loss from leaks in hoses, turn off the water at the house. Sweeping the garage or driveway with a broom, rather than a garden hose, also save water. To avoid evaporation loss, customers may want to water lawns and gardens in the morning.

Customers with automatic sprinkler systems may want to consider purchasing a sensor that shuts off the sprinklers when it rains. To get the most for your money adjust sprinkler heads so water goes on the lawn or garden and not the sidewalk or driveway. When vacationing, customer may want to turn off water softeners that regenerate on a clock so they do not regenerate when no one is using water.

Another very important issue is winterizing sprinkler systems and outdoor faucets. Any plumbing in a location that will be without heat any part of the winter months needs to be winterized before the first cold spell. When pipes are not winterized, the pipes freeze and split. When the first warm weather comes, the pipes burst and water flows out causing flooding and/or interior property damage until the split pipes are discovered.

Customers are encouraged to use all the water they need, but also to take precautions to minimize unnecessary leaks and/or property damages and to keep water and sewer bills in line.

Mercury – A Persistent Problem

Persistent: Existing for a long or longer than usual time or continuously; continuing to exist despite interference or treatment; degraded only slowly by the environment [Merriam Webster]. Mercury is a persistent pollutant! Once it reaches the environment it can remain in sediment and be released into the water for a long time. The Delta Township Utility Department remains persistent in our efforts to make sure that less mercury is being discharged; however, we are finding that despite efforts at “interference or treatment” mercury is a persistently difficult pollutant to reduce or eliminate. We have made some progress but continue to need the support of our residents.

The good news in the ongoing battle is that we are beginning to see a consistent reduction in amount of mercury received at the treatment facility which results in lower levels remaining following treatment and less going into the environment.

There is a large component to controlling mercury that the Utility Department has no control over, however, and that is the mercury that could potentially be discharged from homes. If you have never completed an inventory of your home to identify sources of mercury it would be beneficial to do so. Items that could potentially have mercury include: thermometers, thermostats, fluorescent lamps, mercurochrome, button-cell batteries, some older paints, chemistry sets and weights/counterweight in grandfather clocks. A more extensive list can be found at <https://www.epa.gov/mercury/mercury-consumer-products>.

Instructions on how to clean up small mercury spills can be found at https://www.atsdr.cdc.gov/mercury/docs/residential_hg_spill_cleanup.pdf. If you feel you have been exposed to mercury and have questions about potential health affects you can call your local poison control center at 1-800-222-1222.

Most importantly, NEVER DISPOSE OF MERCURY BY FLUSHING DOWN A DRAIN OR TOILET! This includes any residual powder that might result from breaking one of the new high efficiency light bulbs. These bulbs contain low levels of mercury so handle with care!

The Utility Department will be glad to answer any questions you may have in regard to mercury sources, proper handling, disposal, or other related queries. Feel free to call us from 8 a.m.-4 p.m. Monday-Friday at 323-8570.

election information

2021 Special Election

Tuesday, May 4, 2021 – Special Election

Voter Registration Deadline – Election Day –

Tuesday, May 4, 2021 at 8 p.m.

Ballots will be available after March 25, 2021

Polling Location Change

Precinct 9 will move from Calvary Church to Faith Bible Church 5211 W St. Joe Hwy, Lansing

What is on the Ballot?

There is a Special Election for a Waverly Community Schools Millage Renewal. Visit www.michigan.gov/vote for your full sample ballot

Carefully Follow All Instructions to Ensure Your Vote is Counted

- Read all instructions prior to filling out any portion of your ballot.

Making Mistakes and Fixing Your Ballot

- If you make stray marks or think you may have made a mistake on your ballot you can still vote.
 - * At your precinct on Election Day: Inform an Election Inspector and your ballot can be spoiled and replaced to re-vote.
 - * Absentee Ballot: Contact the Clerk's Office at 323-8500 for instructions to obtain a new ballot.

If residents will be out of the community on Election Day or need any information regarding the upcoming election, contact the Township Clerk's Office at 323-8500.

Additional Hours for In-Person Registration and Voting

The Delta Township Clerk's Office will be open for extended hours on the following dates to process voter registration applications and absent voter applications for the May 4, 2021, Special Election:

Saturday, May 1, 2020 – 8 a.m.-4 p.m.

Registering to Vote on or Before April 19, 2021:

- Any Secretary of State branch office
- Delta Township Clerk's Office 7710 West Saginaw Highway, Lansing, MI 48917
- By Mail
- Online – Michigan Secretary of State website www.michigan.gov/vote

Register to Vote After April 19, and including Election Day (Same Day Registration):

- Voter must appear in person at the Delta Township Clerk's Office during regular business hours and up until 8 p.m. on Election Day. Residency and identification verification will be required. Documents must have name and current Delta Township address. Digital copies are acceptable.
- Additional weeknight and weekend hours will be available prior to each scheduled election as listed above. Contact the Delta Township Clerk's Office at 323-8500 for additional information.

Can I register to vote at my polling precinct on Election Day?

- No. If you are not registered on Election Day, you must register to vote at the Delta Township Clerk's Office in person.

For any questions regarding voter registration or elections, please contact the Clerk's Office at 323-8500. Visit the Secretary of State website for additional election information at www.michigan.gov/vote or the Delta Township website at www.deltami.gov.

Absentee Ballots

Who is eligible to receive an absentee ballot?

ALL REGISTERED VOTERS are eligible to receive an absentee ballot upon request. A "reason" is no longer required.

How do I get an absentee ballot?

- Voters are required to submit a written request to receive an absentee ballot.
- Applications can be found online at www.deltami.gov or www.michigan.gov/vote
- Applications can be returned by
 - * Mail – 7710 W. Saginaw Hwy Lansing, MI 48917
 - * Email deltatwp21520@deltami.gov
 - * Online through www.michigan.gov/vote
 - * In person at the Delta Township Clerk's Office
 - * Drop Boxes- north & east sides of Township Administration Building

Permanent Absentee Application Voter List

Delta Township maintains a list of voters who automatically are mailed an application for an absentee ballot for all elections scheduled in Delta Township.

To be placed on the “Permanent Absentee Application” List

Call the Clerk’s Office Monday-Friday 8 a.m.-5 p.m. at 323-8500 or submit online at www.deltami.gov.

Returning Your Absentee Ballot

There are several options for returning your Absentee Ballot

- Mail your ballot back to the Delta Township Clerk’s Office
- Return your ballot to the Delta Township Clerk’s Office
- Drop Box located inside the Administration Building
- Outdoor Drop Box on the north and east sides of the Township Administration building

Make sure to follow all instructions for properly filling out your Absentee Ballot, including signing the outside of your envelope prior to return. Your ballot must be returned to the Delta Township Clerk’s Office by **8 p.m. on May 4, 2021**. Ballots arriving after May 4, 2021 by mail will not be counted.

Military and Overseas Voter Empowerment Act (“MOVE Act”)

The MOVE Act as signed into law affords all active uniformed service, spouse, dependents, and merchant marine, stationed inside or outside the United States and civilians residing indefinitely or temporarily overseas the option of requesting an “electronic” transmitted, faxed or mailed absentee ballot. The voter must submit a written request or utilize the FPCA form requesting ballot every calendar year (January 1-December 31), and must be filled out in its entirety. The FPCA completed form can be utilized to register to vote and/or apply for absentee ballot and can be emailed to deltatwp21520@deltami.gov or faxed to 323-8599 to the attention of the Clerk’s Office. The FPCA form used for this request is available at our website at www.deltami.gov for your convenience. Additional information including contact information for Michigan’s city and township clerks, sample ballots for you to view for upcoming election or candidate and proposal information can be viewed through the Michigan Voter Information Center (MVIC) Web site maintained by the Michigan Department of State at www.michigan.gov/vote.

Picture ID Requirement When Voting in Michigan

The most common sources of picture identification are your driver’s license or a state ID card. The following forms of picture identification may also be used if they are current:

- Federal or state government-issued photo identification (Driver’s license or state identification card from any state).
- U.S. passport
- Military ID card with photo
- Student ID card with photo from high school or an accredited institution of higher education
- Tribal ID card with photo.

Voters without picture identification can vote like any other voter by signing an affidavit of voter not in possession of identification.

Election Worker Recruitment for May 4, 2021 Special Election

Delta Township is seeking election workers for the following positions:

- Electronic Pollbook Inspectors
- Help Desk Inspectors
- General Inspectors
- Absent Voter Counting Board Inspector
- Precinct Chairpersons
- Absent Voter Counting Board Chairperson
- Chairs-In-Training
- All positions are paid positions, \$12-\$18/hr.
- Paid training for hired position.
- To qualify to work in Delta Township, an individual must be a registered voter within state of Michigan, have no felony convictions, complete an application, and attend mandatory training prior to every election. The positions require applicants to be available for long hours on Election Day.

If interested, please contact the Delta Township Clerk’s Office at 323-8500 or stop by the office to complete an application at 7710 West Saginaw Highway, Lansing, MI.



passports/taxes

Passport Drives

The Delta Township Clerk's Office accepts passport applications by appointment only during regular office hours Monday-Friday 8 a.m.-5 p.m. year-round.

The Delta Township Clerk's Office will be offering eleven extended hours passport drives during 2021. The Delta Township Clerk's Office will be open extended hours on the following dates for the acceptance of passport applications (Form DS-11 ONLY):

2021 Passport Drive Dates

Tuesday, March 9 – 5-7 p.m.

Wednesday, April 14 – 5-7 p.m.

Thursday, May 13 – 5-7 p.m.

Monday, June 14 – 5-7 p.m.

Tuesday, July 13 – 5-7 p.m.

Wednesday, August 11 – 5-7 p.m.

Thursday, September 16 – 5-7 p.m.

Please visit the U.S. Department of State website for documentation requirements, fees and applications at www.travel.state.gov. Two payments will be required: (1) Payable to U.S. Department of State for processing of your passport, and must be in the form of a personal check or money order and (2) Payable to Delta Township for the acceptance fee (\$35) and picture (\$12 if purchased through Delta Township). One official passport quality photo is required when submitting a passport application (Form DS-11 ONLY) and can be obtained at the Clerk's Office. The fee(s) due to Delta Township can be by cash, check or credit/debit card. For questions or further information please call the Delta Township Clerk's Office at 323-8500.

Should You be Paying City Income Tax?

With income tax time rapidly approaching, Delta Township wants to eliminate some of the confusion residents have regarding the issue of the City of Lansing income tax. Delta Township does not have an income tax. Some Delta residents with a Lansing address may believe they owe city income tax; or, more frequently, their employer may have withheld city income tax over the year.

Many times, an employer will automatically withhold taxes when the address is Lansing. A Lansing address relates only to the United States Postal authorities for delivering mail. A Lansing address may mean that a person lives in Delta Township and therefore is not subject to city tax.

- Persons living within the City of Lansing pay a one percent tax, no matter where they work.
- Delta residents that work in the City of Lansing, pay one-half percent income tax.
- The following businesses located in Delta are subject to city income tax because of a 425 Agreement with the City of Lansing: GM-Delta Manufacturing Complex, located on Millett Highway, 7009 W. Mt. Hope currently vacant (formerly YanFeng), Bridgewater Interiors, L.L.C., and Avancez (formerly Android).
- Delta residents that live and work in Delta Township do not pay income tax other than businesses listed above.

Residents that are registered to vote in Delta Township or pay their water and sewer bill to Delta Township are Delta Township residents.

If residents discover that their employer withheld City of Lansing income taxes in error, simply contact the Clerk's office and they will provide the employer with proper identification.

If you have any questions regarding whether or not you are a Delta Township resident, please contact the Clerk's office and they will be happy to assist you at 323-8500.



For more information visit www.deltami.gov

safety tips & more

Spring Safety Reminders

As temperatures increase over the next several weeks, the Delta Patrol would like to remind you to take the follow precautions as you enjoy the spring season: Always keep your home's doors and windows locked when you go to bed or leave your house, even if you are leaving for a short period.

1. Secure all lawn and gardening equipment in your garage or a storage shed, and keep your garage doors closed at all times (even when you're doing work around the house).
2. Put all ladders and other tools back into a secure storage area after you use them.
3. Be aware of home improvements scams. If you did not solicit the contractor or salesman who shows up at your door unannounced, do not do business with that person.
4. Always remember to close your car windows, take any valuables out of your car, and lock your doors every time you exit your vehicle, even if your vehicle is parked in your driveway.
5. Get to know your neighbors! Let a trusted neighbor know if you are planning to travel this spring. Neighbors who know each other look out for each other.

Burning Permits

Delta Township residents must obtain a burning permit for any burning within the township. Burning permits may be obtained online at www.deltami.gov. The Delta Township Burning Ordinance is strictly enforced.

Spring Driving Tips

- Spring showers bring May flow-ers and wet driving conditions: Slow down on slick roads, and increase following distance even when mist begins to fall. Just a small amount of water can mix with oil and grease on the road to create slippery conditions.
- Share the road: Warm weather bring out motorcyclists, bicy-clists, and pedestrians.
- Avoid driving through large puddles: Driving through water can impair your brakes, cloud your vision, or cause you to hydroplane.
- If possible, go around potholes: Deep potholes can throw your car out of alignment or worse, forcing you to buy a new wheel and tire.
- Keep your tires properly inflated: Properly inflated tires can reduce the damaged caused by potholes if you cannot avoid them.

Swimming Safely in Lakes, Rivers & Streams

Swimming in natural water environments is more challenging than home pools. Learn what to do.

Top Things to Know:

- Be sure you are water compe-tent for natural environments before swimming – this is not your home pool!
- Always enter unknown or shallow water feet first.
- Watch out for currents, waves, and underwater obstructions – they're not just found in the ocean.

Be Aware of Hazards & Weather

Being water competent in natural water requires additional knowledge and skills than in the pool. Whenever you are near a lake, river, stream or other natural water environment, watch and prepare for:

- Unexpected changes in air or water temperature
- Fast-moving currents, waves and rapids, even in shallow water
- Hazards, such as dams, underwater obstacles, or rocks and debris
- Vegetation, animals, and fish
- Drop-offs that can unexpectedly change water depth
- Other people's activities in the same waters, such as boating
- Thunder & lightning – leave the water immediately and stay inside an enclosed area for at least 30 minutes after the last thunderclap

Establish and Enforce Rules and Safe Behaviors

- Employ layers of protection including barriers to prevent access to water, life jackets, and close supervision of children to prevent drowning
- Ensure every member of your family learns to swim so they at least achieve skills of water competency: able to enter the water, get a breath, stay afloat, change position, swim a dis-tance then get out of the water safely
- Know what to do in a water emergency – including how to help someone in trouble in the water safely, call for emergency help, and CPR

parks & rental facilities

Park Shelter & Pavilion Rentals

Delta Township park shelters and pavilion are available for rental. Shelters can be rented at Sharp Park, Delta Mills, and Grand Woods. The pavilion at Grand Woods is available for rental as well. Most shelters include access to electricity, grills, restrooms, and playgrounds.

Reservations are taken starting on the first business day of the year for dates between May 1 and September 30. Reservations may be made over the phone by calling 323-8555 or in person at the Parks, Recreation and Cemeteries office in the Delta Township Administration Building. Full payment is due when reservation is made. Refunds will only be issued for cancellations made at least 21 calendar days prior to the rental date.

Sessions Available

Half Day: 10 a.m.-3 p.m.

Half Day: 4-9 p.m.

Full Day: 10 a.m.-9 p.m.

Shelter Reservation Fees

Sharp Park, Delta Mills Park and Grand Woods Park

Half Day: \$50 Res/\$60 Non-Res

Full Day: \$80 Res/\$100 Non-Res

Pavilion Reservation Fees

Grand Woods Park

Half Day: \$75 Res/\$85 Non-Res

Full Day: \$130 Res/\$150 Non-Res

Check availability and reserve by calling 323-8555.



Grand Woods Shelter

Rental Facilities

Looking for indoor space to host your next group event or family gathering? Contact the Parks and Recreation Department at 323-8555 to find out how you can rent the Joseph E. Drolett Community Center or Enrichment Center.

Joseph E. Drolett Community Center

The Joseph E. Drolett Community Center is located on the corner of Canal Road and Willow Highway and features a bi-level floor plan that seats up to 100 people on the upper floor and 70 people on the lower floor. The entire building is handicap accessible, air-conditioned, and non-smoking. Use of the kitchen, oven, stove, sink, electricity, tables, and chairs are included in the rental.



Community Center, Upper Floor

Enrichment Center

The Enrichment Center is located at 4538 Elizabeth Road and has an Activity Room and several classrooms that can be reserved. The entire building is handicap accessible, air-conditioned, and non-smoking. Activity Room rentals can accommodate up to 75 people and include use of the kitchen, sink, refrigerator, microwave, electricity, tables, and chairs. Classroom rentals can accommodate up to 40 people and include use of electricity, tables, and chairs.

Rental Fees

Joseph E. Drolett Community Center (this facility can be booked up to 2 years in advance)

F, 12 p.m.-1 a.m., \$265 Res/\$315 Non-Res*

F, when booked with Saturday, \$145 Res/\$195 Non-Res

Sa, 8 a.m.-1 a.m., \$400 Res/\$500 Non-Res

Su, 11 a.m.-12 a.m., \$285 Res/\$335 Non-Res*

*Rental fees on township holidays are \$400 Res/\$500 Non-Res

Enrichment Center Activity Room (can be booked up to 1 year in advance)

F, 4-11 p.m., \$180 Res/\$240 Non-Res*

Sa, 11 a.m.-11 p.m., \$250 Res/\$310 Non-Res*

Su, 11 a.m.-11 p.m., \$250 Res/\$310 Non-Res*

*Rental fees on township holidays are \$280 Res/\$340 Non-Res

Enrichment Center Classrooms (Limited Availability)

M-Th, 5-9 p.m., \$15 per hour Res/\$25 per hour Non-Res

Two hour rental minimum.

A damage deposit of \$250 and a copy of your renters or homeowners insurance policy are required with all facility rentals.

Check availability for any of these facilities by calling 323-8555

recycling programs

Delta Township Recycling Center

5717 Millett Highway

Winter Hours:

November-March

Tuesdays – 8 a.m.-4 p.m.
Wednesdays – 12-6 p.m.
Saturdays – 8 a.m.-4 p.m.

Summer Hours:

April-October

Tuesdays – 8 a.m.-4 p.m.
Wednesdays – 12-8 p.m.
Saturdays – 8 a.m.-4 p.m.

Closed Holidays

The Recycling Center will be closed

May 1, May 29, July 3,
September 4, November 27,
and December 25 in 2021.

***Residential Use Only -
No Commercial***

2021 Special Recycling Programs

Eaton County Department of Resource Recovery sponsors several recycling events throughout the year within Eaton County. The 2021 schedule of events will be available soon at the Eaton County Department of Resource Recovery website at www.eatoncounty.org/recycle. Appointments are required for events and can be made by calling Eaton County Department of Resource Recovery at 517-543-3686 or scheduling your appointment online at www.recycle@eaton-county.org. For more information on 2021 events contact the Eaton County Department of Resource Recovery.

2021 Free Yard Waste Day

Thursday, April 29, 2021

Delta Township residents can drop off yard waste free of charge on Thursday, April 29, 2021 from 2-8 p.m. at the Delta Township Recycling Center. Township residents must provide a photo identification and a voter ID card, property tax notice, or water/sewer bill to participate in free yard waste day. Yard waste branches can be no longer than 4 feet long and 4 inches in diameter. Yard waste bags or recyclable container are best practices in transporting yard waste to the Recycling Center for disposal, NO PLASTIC BAGS ALLOWED. The size of loads will be limited to no larger than 5 X 8 feet or the back of a full size pick-up. No tandem trailers or cube type vehicles will be permitted. All recyclable items will be accepted during free yard waste day.

Yard Waste Accepted April 7-October 13, 2021. Open to all Delta Township residents utilizing the Recycling Center for disposal of yard waste. Fees apply; please visit the Delta Township website at www.deltami.gov/recycling for applicable fees or call the Clerk's Office at 323-8500.

Electronics Recycling

Delta Township offers a monthly (Saturday) event for electronics recycling. Residents will be charged a fee based on the weight of the item and/or size. Tentative dates for electronics recycling are as follows: March 20, April 17, June 19, July 17, August 14, September 18, and December 18. Please visit our website at www.deltami.gov for more details.

Spring Clean-Up

Saturday, May 1, 2021 –

9 a.m.-2 p.m. – Delta Township

Please visit Eaton County's website at www.eatoncounty.org for a list of all items that will be accepted at this spring clean-up event. Appointment is required. Call 517-543-3686 or for online appointments visit www.recycle@eatoncounty.org. Location within Delta Township will be disclosed at time appointment is made. Event is for residents of Eaton County (non-commercial). For updated event information, visit www.eatoncounty.org.

Accepted Recycling Items

Delta Township's Recycling Center accepts the following products or materials to be recycled: cooking oil, polystyrene foam, household batteries (please tape the circuits on lithium, 9 volt and larger batteries), cellular phones, ink cartridges, plastics with #1-7 symbol on bottom, metals, clear and colored glass, paper, boxboard, CFL bulbs, and phone books. Please remove all lids and caps from plastic containers prior to recycling. Pop or beer box containers, containers designed to go in the freezer or refrigerator, or plastic containers that hazardous waste comes in, such as motor oil or anti-freeze, are not accepted. For a complete listing of items accepted at the Delta Township Recycling Center and to obtain the monthly recycling newsletter visit www.deltami.gov.



For more information visit www.deltami.gov or call 323-8500

Delta Charter Township
7710 West Saginaw Highway
Lansing, MI 48917

RESIDENTIAL CUSTOMER

ECRWSS
PRSTD STD
U.S. Postage
PAID
Permit No. 718
Lansing, MI

**Delta Township
Administrative Offices**
7710 West Saginaw Highway
323-8500, 323-8599 (Fax)
Monday-Friday 8 a.m.-5 p.m.

**Waverly East
Intermediate Pool**
3131 West Michigan
(office located at the
Enrichment Center,
4538 Elizabeth Road)
484-5600
Monday-Friday 10 a.m.-3 p.m.

Hillside Cemetery
6415 Delta River Drive
Information: 323-8500

Delta Center Cemetery
7301 West St. Joe Highway
Information: 323-8500

Enrichment Center
4538 Elizabeth Road
484-5600
Rental Information: 323-8555

**Delta Township
District Library**
5130 Davenport Drive
321-4014
<http://www.dtdl.org/>
@deltatwplibrary



Recycling Center
5717 Millett Highway
Information: 323-8500

April 1-October 31
Tuesday 8 a.m.-4 p.m.
Wednesday 12-8 p.m.
Saturday 8 a.m.-4 p.m.

November 1-March 31
Tuesday 8 a.m.-4 p.m.
Wednesday 12-6 p.m.
Saturday 8 a.m.-4 p.m.

**Joseph E. Drolett
Community Center**
7550 West Willow Highway
Rental Information: 323-8555

Delta Fire Station #1
811 North Canal Road
321-6622 (Non-Emergency)
Monday-Friday 8 a.m.-5 p.m.

Delta Fire Station #2
7720 W. Grand River Ave.
Grand Ledge, MI 48837

Delta Fire Station #3
215 Snow Road

**Eaton County Sheriff/
Delta Patrol**
7708 Administration Drive
372-8217 (Non-Emergency)
Monday-Friday 8 a.m.-5 p.m.

EATRAN 371-3312 (Eaton Co.)

Anderson Park
3207 Wardell Road

Delta Mills Park
7001 Old River Trail

Erickson Park
4220 South Canal Road

Grand Woods Park
4500 West Willow Highway

Hawk Meadow Park
6160 Delta River Drive

**Hunter's Orchard
Park**
7242 Old River Trail

Lake Delta
3½ miles south of Saginaw
Highway on Canal Road

LeLand Park
½ mile west of Waverly on
St. Joe Highway

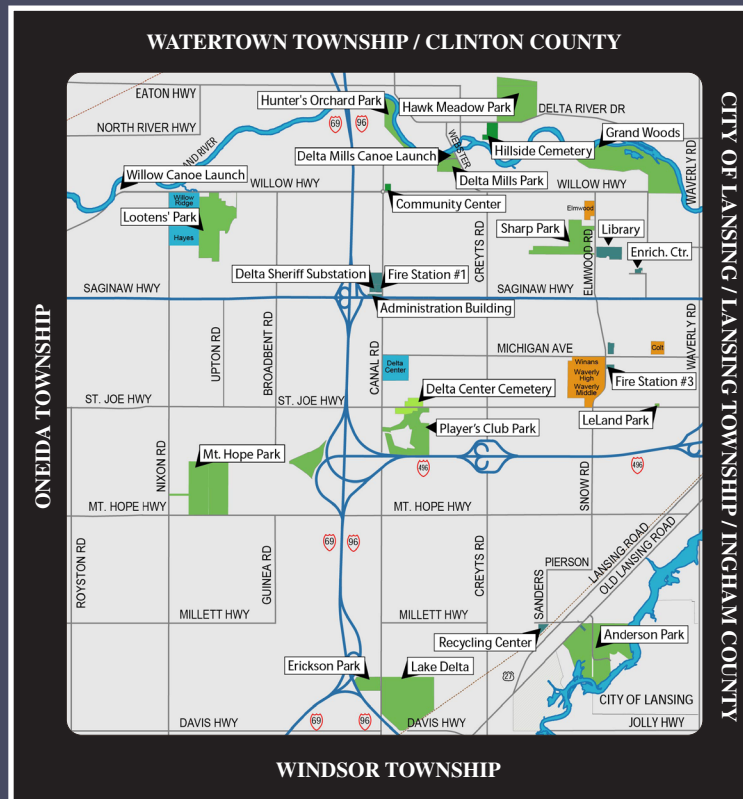
Lootens Park
East of Nixon Road on
Willow Highway

Mount Hope Park
7419 East Mt. Hope Highway
Grand Ledge

Player's Club
South of St. Joseph on Canal

Sharp Park
1401 Elmwood Road

Willow Canoe Launch
6507 Willow Highway
Grand Ledge



*For a department directory including phone numbers and an overview of responsibilities, please see page 3.
Unless specified, all addresses are Lansing, MI 48917.*