

# Delt Magazine



Fall 2021

[www.deltami.gov](http://www.deltami.gov) ■ 323-8500

I AM  DELTA





Supervisor Kenneth R. Fletcher  
KFletcher@deltami.gov



Clerk Mary R. Clark  
MClark@deltami.gov



Treasurer Dennis R. Fedewa  
DFedewa@deltami.gov



Trustee Elizabeth (Beth) S. Bowen  
BBowen@deltami.gov



Trustee Fonda J. Brewer  
FBrewer@deltami.gov



Trustee Andrea M. Cascarilla  
ACascarilla@deltami.gov



Trustee Karen J. Mojica  
KMojica@deltami.gov

# From the Township Board

It has been over a year and a half since all our lives changed. This summer brought some return to normalcy for everyone. We wish to thank all of our residents for your patience as we worked hard to provide as many services as possible through challenging, uncertain, and often unpredictable times.

## Township Services

The Township is providing all of our services and all buildings are open to the public.



## Township Board Meetings

Our Township Board and other Boards and Commissions are back to meeting in person. While the Township Board now meets in person, residents can still tune into our board meetings live via zoom. A link is provided on our agenda. Meetings will also be posted onto our YouTube channel for viewing at a later date.



## Quality of Life

While there was uncertainty, the Township was able to move forward with several quality-of-life projects throughout the year.

### Waverly Pathway

This Spring, the Waverly Pathway was completed. We celebrated with a ribbon cutting on June 15th. This regionally significant project was completed with the collaboration of many partners including Lansing Township, Tri-County Regional Planning, MDOT in conjunction with the Federal Highway Administration, Ingham County Road Department, Eaton County Road Commission, and three different funding agencies.



### Michigan Avenue Road Diet

The Michigan Avenue Road Diet incorporated bike lanes and a reduction from four lanes to three lanes. This partnership with the Eaton County Road Commission adds an important non-motorized facility to the Township and lines up with non-motorized facilities on the East side of Waverly offering bicyclists the ability to ride all the way into Lansing. The road diet was studied by the Eaton County Road Commission and found to be safer with a dedicated turn lane. The new configuration also provides a safer school zone.



## Other Regionally Significant Economic Development Projects

- Delta Crossings by the I-69/I-96 interchange is nearing completion of phase I. Phase II is already underway.
- Project Spartan is a more than 1,000,000 square foot fulfillment center that will begin construction very soon. This project is located at Creyts and Mt. Hope.
- Mt. Hope repaving and bike lanes (96 to Nixon).
- Creyts widening and addition of Traffic Signal – Economic development project to increase capacity with the expansion of Auto Owners Southern Campus.
- Design work is nearing completion for the new Wastewater Treatment plant. That is scheduled to begin construction in 2022. This \$80 million treatment plant upgrade will be completed in 2-3 phases and provide quality and reliable treatment for the community as well as additional capacity to accommodate for economic growth.





### IN THIS ISSUE:

- 2 Letter from the Board
- 3 Table of Contents
- 4 Senior Adult Recreation (50+)
- 6 Aquatic Programs
- 7 Special Events
- 8 Youth and Adult Enrichment Classes
- 10 Athletics - Youth and Adult
- 11 Rental Facilities
- 12 Library Programs and Information
- 13 Community Awards Event
- 14 Safety Tips from Delta Fire and the  
Eaton Co Sheriff Department
- 16 Election Information/Taxes/Passports
- 18 Utility Department Information
- 19 Recycling Information
- 20 Township Locations and Addresses



### COVER IMAGE

The Delta Mills Park Canoe/Kayak Launch is located at 7001 Old River Trail. In 2019 the ADA launch was installed along with an able-bodied launch, a fishing dock, basketball court, playground equipment, and a parking lot.

## DELTA TOWNSHIP DEPARTMENT DIRECTORY

ACCOUNTING/TREASURER DEPARTMENT	323-8510
Water/Sewer Bills	
Tax Collections	
ASSESSING DEPARTMENT	323-8520
Property Information/Assessed Valuations	
Weed Ordinance Enforcement	
BUILDING DEPARTMENT	323-8530
Building, Electrical, Mechanical, Plumbing, Remodeling Permits	
Sewer Capital Charges	
Code Enforcement	
Sign Permits	
CLERK'S OFFICE	323-8500
Board of Trustee Information	
Voter Registration and Elections	
Passports	
Recycling	
Cemetery Lots	
EATON COUNTY SHERIFF/DELTA PATROL	323-8480
Emergency: 911	Non-Emergency 372-8217
ENGINEERING DEPARTMENT	323-8540
Sanitary Sewer and Water Location Information	
FIRE DEPARTMENT	321-6622
Emergency: 911	
Burning Permits	
Fire Code Inspections	
LIBRARY	321-4014
Books, Magazines, and Audio Books	
Movies and Music	
MANAGER'S OFFICE	323-8590
Administration, Budget, Human Resources	
Information Technology	
FOIA Requests	
PARKS, RECREATION & CEMETERIES DEPT.	323-8555
Athletics and Special Events	
Community Education Classes	
Park Shelters and Ball Fields	
Facility Reservations	
39'ERS AND AQUATICS OFFICE	484-5600
50+ Programs (Senior Citizens Programs)	
Aquatics	
PLANNING DEPARTMENT	323-8560
Zoning Ordinance Enforcement	
New Developments	
Planning Commission	
Economic Development	
UTILITIES DEPARTMENT	323-8570
After-Hours Emergency	323-8570
Water/Sewer Problems	

# senior adult recreation

The Delta 39'ers is for people ages 50 and over. There is no residency requirements and no membership fees or dues.

The Delta 39'ers are in the Delta Enrichment Center located at 4538 Elizabeth Road, Lansing, 48917. The Delta 39'ers office hours are Monday-Friday, 10 a.m. to 3 p.m., the phone number is 517-484-5600.

The Delta 39'ers office will be closed and there will be no Delta 39'ers activities on 9/6, 11/25, 11/26, 12/24, and 12/27.

## Delta 39'ers Weather Policy

If Waverly Community Schools are closed due to weather, then all Delta 39'ers activities, classes, and events (except trips) are also cancelled. The activities, classes, and events will be rescheduled when possible.

## Delta 39'ers Registration

Begins on Tuesday, August 31, at 8 a.m. Registration is required for activities, classes, events, golf, and trips (unless noted with an \*). Register at any time for golf and at any time before registration deadline for trips.

## Delta 39'ers Newsletter

Want to receive our newsletter? Call our office with your mailing address or email address and we will add you to our newsletter list.

## Delta 39'ers Gift Certificates

We offer gift certificates in a variety of denominations. They can be used for trips, classes, footcare, and chair massage. A great gift for any occasion.

## Fitness & Exercise Classes

### Arthritis Exercise\*

Improve strength, flexibility, and range of motion. Exercises can be done in a seated/standing position. 2nd & 4th W, ongoing, 1-1:45 p.m., \$2 drop-in fee per class, Room 304

### Jazzercise LO\*

Build balance and flexibility. Tone your whole body. Modified movements/lower intensity for all fitness levels.

Tu/Th, ongoing, 3:30-4:25 p.m., \$52 (16 classes), prorating and \$5 drop-in fee, register in class, Community Center, Upper Level

### Senior Barre Fitness

Full-body workout with ballet-based movements, weight conditioning, core-focused exercise, and stretching by emphasizing precision, and form. Please wear soft-soled shoes (Isotoner slippers or socks). Bring a Pilates ring/circle to class.

M/W, 9/13-10/27, 11:30 a.m.-12:15 p.m., \$56 (14 classes), SR4720a, M/W, 11/1-12/8, 11:30 a.m.-12:15 p.m., \$48 (12 classes), SR4720b, Community Center, Upper Level

### Senior Core and More

Focusing on the abdominal muscles and lower back. Develop strength, balance, flexibility, and joint stability. Beginners welcome. Bring water, mat, towel, and an exercise band or a pair of weights (1 or 2 lb).

M/W/F, 9/13-10/8, 9:30-10:15 a.m., \$48 (12 classes), SR4721a, M/W/F, 10/11-11/5, 9:30-10:15 a.m., \$48 (12 classes), SR4721b, M/W/F, 11/8-12/10 (no class 11/26), 9:30-10:15 a.m., \$56 (14 classes), SR4721c, Community Center, Upper Level

### Tai Chi

#### Tai Chi Qigong Shibashi

Easy and beginning class in which you will learn the movements.

Th, 9/9-10/28, 10:10-11:10 a.m., \$48 (8 classes), SR4701a, Th, 11/4-12/30 (no class 11/25), 10:10-11:10 a.m., \$48 (8 classes), SR4701b, Room 303

#### Tai Chi Beginning

Putting the movements from Qigong into flowing rhythmic patterns.

Th, 9/9-10/28, 11:15 a.m.-12:15 p.m., \$48 (8 classes), SR4702a, Th, 11/4-12/30 (no class 11/25), 11:15 a.m.-12:15 p.m., \$48 (8 classes), SR4702b, Room 303

### Yoga\* – All Levels

Gentle yoga which includes stretching and strengthening.

Tu, 10-11 a.m.

W, 10-11 a.m.

Th, 10-11 a.m.

F, 10-11 a.m.

\$2 drop-in fee per class, Room 304

### Zumba Gold

Dance-fitness workouts specifically designed for the active older adult.

M/W/F, 9/13-10/8, 10:30-11:15 a.m., \$48 (12 classes), SR4717a, M/W/F, 10/11-11/5, 10:30-11:15 a.m., \$48 (12 classes), SR4717b, M/W/F, 11/8-12/10 (no class 11/26), 10:30-11:15 a.m., \$56 (14 classes), SR4717c, Community Center, Upper Level

### Pacers Walking Club\*

Walk daily year-round. Sign up by logging your miles in the Food Court. Monthly newsletters with information on activities and events. Mall opens at 10 a.m. for walkers, Free, Lansing Mall (Food Court)



## Classes

### Intro to Creative Writing

Learn or improve techniques for translating imagination to the written page. Nurture existing ideas. Discover new ones. All writing levels welcome.

(Supply fee included)

W, 9/8-10/27, 3-5 p.m., \$77  
(8 classes), SR4756, Room 302  
W, 11/3-12/22, 6-8 p.m., \$77  
(8 classes), SR4749, Room 302

### Learn To Knit – All Levels

Basics, learn techniques, and troubleshoot current/new projects.

M, 9/13-10/25, 10:15 a.m.-12:30 p.m., \$28 (7 classes), SR4745a,  
M, 11/1-12/13, 10:15 a.m.-12:30 p.m., \$28 (7 classes), SR4745b,  
Room 304

### Learn To Crochet – All Levels

Basics, learn techniques, and troubleshoot current/new projects.

F, 9/10-10/22, 10:15 a.m.-12:30 p.m., \$28 (7 classes), SR4746a,  
F, 10/29-12/17, 10:15 a.m.-12:30 p.m., \$28 (7 classes), SR4746b,  
Room 304

### No Fear Computer Class - Basics

Learn computer skills, the internet, and email.

W, 9/8-10/27, 1-2:30 p.m., Free  
(8 classes), SR4745a1, Room 301  
W, 11/3-12/22, 1-2:30 p.m., Free  
(8 classes), SR4745b1, Room 301

### Beyond The Basics

Learn computer skills, the internet, email, plus a simple intro to Windows 11.

W, 9/8-10/27, 3-4:30 p.m., Free  
(8 classes), SR4745a2, Room 301  
W, 11/3-12/22, 3-4:30 p.m., Free  
(8 classes), SR4745b2, Room 301

## Delta 39'ers Registration

Begins on Tuesday, August 31, at 8 a.m. Registration is required for activities, classes, events, golf, and trips (unless noted with an \*). Register at any time for golf and at any time before registration deadline for trips.

### Soulful Story Cards

A workshop to shed light on old stories holding us back and give ourselves permission to create new stories, opening opportunities for insights and wisdom. The cards become signposts for moving forward with intention.

(Supply fee included)

F, 9/10, 9/17, & 9/24, 10:30 a.m.-12:30 p.m., \$28 (3 classes), SR4758,  
Room 302

## Health Services

### Alzheimer Male Caregiver Support Group\*

This group is for the male caregiver and offers support, education, problem solving, and guest speakers.  
3rd W, 10 a.m.-12 p.m., Free,  
Room 302

### Alzheimer & Dementia Co-Ed Caregiver Support Group\*

Join Nicole and Chris for this group. It is for male and female caregivers and offers support, education, problem solving, and guest speakers.  
1st W, 11 a.m.-12 p.m., Free,  
Room 302

### Chair Massage

A 20-minute chair massage.  
2nd & 4th W. Call for an appointment. \$12

### Foot Care

Includes: Toenail cutting, foot bath, and foot massage. Minor calluses and rough areas. Corns are a medical procedure therefore this procedure is not performed.  
Three days a month. Call for an appointment. \$30



## Cards & Games\*

Drop-in only. No partner needed.

Room 300 (except Bingo which is in the Activity Room)

### Bingo\*

M/W/F, 1-3 p.m., \$1,

### Bridge (Social/Contract)\*

M, 1-4 p.m., \$1.50

### Cribbage\*

W, 1-3 p.m., \$1.50

### Euchre\*

M, 6-9 p.m., \$1.50

Th, 6-9 p.m., \$3

### Mahjong\*

2nd & 4th F, 12-3 p.m., \$.50

### Pinochle\*

Tu, 11:30 a.m.-3 p.m., \$1.50

### Scrabble\*

Th, 1-3 p.m., \$.50



## Luncheons

### Lunch

Come and join us for lunch.

Reservations are required and must be called in by noon the day before you want to attend. Call for a menu/reservations.

M/W/F, 11:45 a.m.-12:45 p.m., \$3.50 suggested donation for ages 60+, \$6 charge ages 59 & under.

## Library\*

Books and jigsaw puzzles are available. We have a take one, leave one system.

## Golf Leagues

### Men's League

Tu, 4/27-9/21, Tee Time 7-9 a.m.  
Ledge Meadows Golf Course, \$25

### Women's League

Tu, 4/27-9/21, Tee Time 7-9 a.m.  
Ledge Meadows Golf Course, \$25

## Treadmill\*

M-F, 10 a.m.-3 p.m., Free

# aquatic programs

The Delta Enrichment Center (4538 Elizabeth Road) is home to the Aquatics Office. The pool is located at Waverly East Intermediate School (3131 West Michigan Avenue) use Door #14 on SE corner of school.

## You may purchase punch cards:

- 1- At the Delta Aquatics Office, located inside the Delta Enrichment Center. Office hours are Monday-Friday, 10 a.m.-3 p.m. Cash, checks, and debit/credit cards are accepted.
- 2- On the pool deck with a check (made payable to: Delta Township); sorry no cash or credit cards are accepted on the pool deck.
- 3- Over the phone at 484-5600. Visa, MasterCard, Discover, and American Express are accepted. Phone orders will be delivered to the pool twice a week. Refunds will not be issued for new or partially used punch cards.

For up to the date protocols visit the aquatics page on the Delta Township website at [www.deltami.gov](http://www.deltami.gov).

## Adult Water Exercise Ages 18+

The exercise classes listed are each 45 minutes long, ongoing, and can be joined at any time. Participants do not need to be swimmers to participate. Your first visit to one water exercise class (of your choice) is free!  
 \$55 for 10 visits w/punch card: age 54 and under  
 \$50 for 10 visits w/punch card: age 55 and over  
 \$7 per person drop-in fee

### Arthritis Foundation Aquacise

See Adult Water Exercise for prices.  
 M/W/F, 11-11:45 a.m.

### Arthritis Plus Foundation Aquacise

See Adult Water Exercise for prices.  
 Tu/Th, 11-11:45 a.m.

### Splash Aerobics

See Adult Water Exercise for prices.  
 Tu/Th, 9-9:45 a.m.  
 M/W/F, 10-10:45 a.m.  
 M/W, 6-6:45 p.m. \*

### Deep Water Aerobics

See Adult Water Exercise for prices.  
 M/W/F, 9-9:45 a.m.  
 T/Th, 10-10:45 a.m.  
 M/W, 5-5:45 p.m. \*

## Lap/Open/Family Swim

\$35 for 10 visits with punch card or  
 \$4 per person, per visit drop-in fee

### Lap Swim

Ages 18+  
 M-F, 12-1 p.m.

### Adult Open Swim

Ages 18+  
 M/W/F, 3:30-4:45 p.m. \*

### Open Swim

All Ages  
 M/W, 6:45-8 p.m. \*



An adult must remain in attendance during family swims and open swim for children. In the event that the Waverly Schools are closed due to inclement weather, all pool activities are also cancelled. Information on possible closings can be obtained by calling 484-9322. No street shoes are allowed on the pool deck. Swimmers must shower before use. Infants must wear a swim diaper (not a regular diaper) in the pool. No persons over the age of 5 are allowed in opposite gender locker rooms.

\*Tentative depends on hiring a lifeguard

Classes and program times may change without notice. Please check the aquatics page at [www.deltami.gov/parks](http://www.deltami.gov/parks) for up-to-date information.

## Swim Lesson Registration

Check the website for swim lesson information later this fall. Look for the aquatics page at [www.deltami.gov/parks](http://www.deltami.gov/parks).

Delta Township is always looking for certified lifeguards, water aerobics instructors and swim lesson instructors. Contact the aquatics office to apply or for more information.

## The Pool will be Closed on the Following Dates:

Monday, September 6, 2021  
 Thursday, November 25, 2021  
 Friday, November 26, 2021  
 Friday, December 24, 2021 to Monday, January 3, 2022

# special events

## Movie at Mount Hope Park

Come and join your friends for one last movie in the park. Arrive early and enjoy beautiful Mount Hope Park and take advantage of pre-movie activities including: lawn games, concessions, music, playground, and the walking path. Activities will start at 7 p.m. and the movie will start at approximately 9 p.m. Bring a blanket or low back chair to enjoy watching the movie.

**F, 9/10, movie starts around 9 p.m. – Jumanji Welcome to the Jungle – Rated PG-13**  
**FREE**

## Pint-Sized Picassos – Parent Participation

Let us provide the materials and clean-up while your child provides the creativity. There will be a couple different projects each week. We will use different types of paints, crayons, glue, collage materials, and more. The easels will also be available every week for the children to use. No need to register in advance.

**Th, 9/23-10/21, 10-11 a.m., Ages 2-5, \$1 per child per week – adults are free, Room 301 in the Enrichment Center**

## Parks Bingo

Coming this October we will have a bingo card incorporating things to do at the parks in Delta Township. The card will be available on our website, facebook, and you can also call the office at 323-8555 and a card can be emailed or sent to you in the mail. Once you get a bingo from completing the items listed on the card you will turn it into the Parks & Recreation Department for a candy prize. You will have the entire month of October to get a bingo.

## Trick-or-Treat Trail

Come and “trick-or-treat” the Sharp Park trail at the displays set up by local businesses and groups. A \$1 fee per child will be collected at the park and will be used for future parks events. We encourage everyone to wear costumes and bring your own trick or treat bag. If you are a business or civic group and would like to have a table, please call us at 323-8555 or visit [www.deltami.gov](http://www.deltami.gov) to obtain a form. Trail shuts down at 7:30 p.m.

**Tu, 10/12, 5:30-7:30 p.m. (rain date is 10/13)**  
**\$1 per child (while candy supplies last)**  
**Sharp Park**

## North Pole Express Mailbox

Back for 2022 we will once again have our North Pole Express Mailbox where area youth can drop their letters to Santa! The mailbox will be located on the Southside of the Delta Township Administration Building located at 7710 West Saginaw Highway beginning in December.

Letters will be regularly picked up by Santa’s most trusted helpers and will be hand-delivered to the big man himself. Santa will read and respond to each letter with a return address.

For more information or for questions, please contact the Delta Township Parks and Recreation Department at 323-8555.



## Daddy Daughter Dance

Dance to your favorite music in the elegant surroundings of the Crowne Plaza Lansing West Hotel. You will also enjoy refreshments, a corsage for the lady, photographs, and more. The dance is open to all young ladies and the adult male of their choice. Dinner is on your own. If you would like to eat at Bordeaux in the hotel you must call them for reservations at 391-1307.

**M, 2/7, 7-9 p.m.**  
**No refunds after 2/4**  
**\$10 per person (Delta Township residents)**  
**\$12 per person (non-residents)**  
**Crowne Plaza Lansing West Hotel**

## Mother Son Dance

Dance to your favorite music, enjoy refreshments, and leave at the end of the evening with a photo and a special surprise. The dance is open to all young men and the adult female of their choice.

**M, 3/14, 7-9 p.m.**  
**No refunds after 3/11**  
**\$10 per person (Delta Township resident)**  
**\$12 per person (non-residents)**  
**Crowne Plaza Lansing West Hotel**

## Mother Daughter Dance

Dance to your favorite music, enjoy refreshments, and leave at the end of the evening with a photo and a special surprise for the young girl. The dance is open to all young girls and the adult female of their choice.

**M, 4/25, 7-9 p.m.**  
**No refunds after 4/22**  
**\$10 per person (Delta Township resident)**  
**\$12 per person (non-residents)**  
**Crowne Plaza Lansing West Hotel**

# enrichment classes

## ADULT CLASSES

### Strength, Flexibility, and Core

W, 5:30-6:15 p.m.  
9/15-11/24  
\$60 Res/\$72 Non-Res  
Community Center, Upper Floor

### Pilates - Monday

M, 5:30-6:15 p.m.  
9/13-11/29  
No Class 11/1  
\$60 Res/\$72 Non-Res  
Enrichment Center, Room 303

### Zumba - Monday

M, 6:30-7:30 p.m.  
9/13-11/29  
No Class 11/1  
\$72 Res/\$83 Non-Res  
Enrichment Center, Room 303

### Zumba Toning and Abs

W, 6:30-7:30 p.m.  
9/15-11/24  
\$72 Res/\$83 Non-Res  
Community Center, Upper Floor

### Pilates, Ballet and Barre Fitness

Th, 5:15-6 p.m.  
9/16-11/18  
\$55 Res/\$65 Non-Res  
Enrichment Center, Room 303

### Zumba - Thursday

Th, 6:15-7:15 p.m.  
9/16-11/18  
\$65 Res/\$75 Non-Res  
Enrichment Center, Room 303

### Outdoor TRX Suspension Training

M, 6:15-7 p.m.  
9/13-10/4  
\$26 Res / \$30 Non-Res  
Grand Woods Park Shelter  
\*Limited to 8 participants\*

### TRX Suspension Training

Th, 7-7:45 p.m.  
10/14-11/18  
\$39 Res/\$45 Non-Res  
Community Center, Lower Floor

### Gentle Yoga Flow

M, 6-6:45 p.m.  
Session 1: 9/13-10/25  
\$52 Res/\$60 Non-Res  
Session 2: 11/8-12/13  
\$44 Res/\$50 Non-Res  
Enrichment Center, Room 304

### Jazzercise

Tu/Th, 5:45-6:45 p.m.  
Ongoing, Starts Sept 2  
\$52/month  
Community Center, Upper Floor  
Call Sandy for info. 517-285-0066

### Jazzercise LO

Tu/Th, 9:30-10:30 a.m.  
Ongoing, Starts Sept 2  
\$52/month  
Community Center, Upper Floor  
Call Sandy for info. 517-285-0066

## Class Registration

The first day to register for classes is Tuesday, August 21 starting at 8 a.m. For more information or for full class descriptions please visit [www.deltami.gov](http://www.deltami.gov) or call 323-8555.

### Wildlife Explorers (5-10)

Wildlife Explorers will get youth out in the Delta Township parks to explore and discover many aspects of nature in a fun and engaging way. Each participant will be given a workbook that compliments all the different activities we will do in the parks. Each week the explorer team will learn how to venture through the parks and open our eyes and ears to the many sights and sounds of nature.

Th, 6-7 p.m., 9/9-10/14  
\$5 Res/\$10 Non-Res  
Sharp Park for first session. We will visit a different park each week. List will be provided in first class.

## YOUTH CLASSES

### Home Alone (Ages 10-15)

Th, 6-7:30 p.m., 10/21  
\$10 Res/\$12 Non-Res  
Enrichment Center, Activity Room

### Karate- Youth (6-14)

Tu, 6:30-7:30p or 7:30-8:30 p.m.  
Session 1: 9/14-11/9  
No Class 11/2  
\$30/individual  
Session 2: 11/16-12/21  
\$25/individual  
Community Center, Lower Floor

### Karate for Families

Tu, 6:30-7:30 p.m. or 7:30-8:30 p.m.  
Session 1: 9/14-11/9  
No Class 11/2  
\$60/family  
Session 2: 11/16-12/21  
\$50/family  
Community Center, Lower Floor

### Karate for Adults (15+)

Tu, 7:30-9 p.m.  
Session 1: 9/14-11/9  
No Class 11/2  
\$40/individual  
Session 2: 11/16-12/21  
\$30/individual  
Community Center, Lower Floor

### Pint Sized Picassos (2-5) - Parent Participation (Drop-in Class)

Th, 10-11 a.m.  
9/23-10/21, \$1 per child/per class  
Enrichment Center, Room 301





PROGRAM	AGE(S)	DAY(S)	TIME(S)	DATE(S)	COST
Dance with Me (EC Rm 304)	18mo-3	M	10-10:45 a.m.	8/23-10/11	\$60 Res/\$65 Non-Res
Dance with Me (EC Rm 304)	18mo-3	M	10-10:45 a.m.	10/18/12/13	\$60 Res/\$65 Non-Res
Creative Dance 1 (EC Rm 304)	3-4	Tu	4:10-4:40 p.m.	8/24-10/12	\$60 Res/\$65 Non-Res
Creative Dance 1 (EC Rm 303)	3-4	Sa	9:10-9:40 a.m.	8/28-10/16	\$60 Res/\$65 Non-Res
Creative Dance 1 (EC Rm 304)	3-4	Tu	4:10-4:40 p.m.	10/19-12/14 No Class 11/2	\$60 Res/\$65 Non-Res
Creative Dance 1 (EC Rm 303)	3-4	Sa	9:10-9:40 p.m.	10/23-12/18 No Class 11/27	\$60 Res/\$65 Non-Res
Creative Dance 2 (EC Rm 303)	4-5	Tu	4-4:40 p.m.	8/24-10/12	\$60 Res/\$65 Non-Res
Creative Dance 2 (EC Rm 304)	4-5	Sa	9:15-9:55 p.m.	8/28-10/16	\$60 Res/\$65 Non-Res
Creative Dance 2 (EC Rm 303)	4-5	Tu	4-4:40 p.m.	10/19-12/14 No Class 11/2	\$60 Res/\$65 Non-Res
Creative Dance 2 (EC Rm 304)	4-5	Sa	9:15-9:55 a.m.	10/23-12/18 No Class 11/27	\$60 Res/\$65 Non-Res
Intro Tap/Jazz (EC Rm 303)	5-6	Tu	4:45-5:30 p.m.	8/24-12/14	*\$140 Res/\$150 Non-Res*
Tap 1 (EC Rm 303)	7-10	Tu	5:35-6:20 p.m.	8/24-12/14	*\$140 Res/\$150 Non-Res*
Jazz 1 (EC Rm 304)	7-9	Tu	4:45-5:30 p.m.	8/24-12/14	*\$140 Res/\$150 Non-Res*
Jazz 2 (EC Rm 303)	9-11	Tu	6:35-7:30 p.m.	8/24-12/14	*\$150 Res/\$160 Non-Res*
Jazz 3 (EC Rm 303)	9-11	Th	7:35-8:30 p.m.	8/26-12/16 No Class 11/25	*\$150 Res/\$160 Non-Res*
Intro Ballet/Contemp (EC Rm 304)	5-6	Th	5:55-6:40 p.m.	8/26-12/16 No Class 11/25	*\$150 Res/\$160 Non-Res*
Intro Ballet/Contemp (EC Rm 304)	5-6	Sa	10-10:45 a.m.	8/28-12/18 No Class 11/27	*\$140 Res/\$150 Non-Res*
Ballet 1 (EC Rm 304)	7-9	Th	6:45-7:30 p.m.	8/26-12/16 No Class 11/25	*\$140 Res/\$150 Non-Res*
Ballet 2 (EC Rm 303)	9-11	Tu	7:35-8:30 p.m.	8/24-12/14 No Class 11/2	*\$150 Res/\$160 Non-Res*
Contemporary 1 (EC Rm 304)	7-9	Tu	6:35-7:30 p.m.	8/24-12/14	*\$150 Res/\$160 Non-Res*
Contemporary 2 (EC Rm 304)	9-11	Tu	5:35-6:30 p.m.	8/24-12/14	*\$150 Res/\$160 Non-Res*
Contemporary 3 (EC Rm 304)	11-13	Tu	7:35-8:30 p.m.	8/24-12/14	*\$150 Res/\$160 Non-Res*
Musical Theatre 1 (EC Rm 304)	7-9	Th	4:15-5 p.m.	8/26-12/16 No Class 11/25	*\$140 Res/\$150 Non-Res*
Musical Theatre 2&3 (EC Rm 304)	10-13	Th	5:05-5:50 p.m.	8/26-12/16 No Class 11/25	*\$140 Res/\$150 Non-Res*
Breakdancing (EC Rm 303)	8-13	Th	4-4:45 p.m.	9/30 or 10/21	\$12 Res/\$15 Non-Res
**Children's Dance Company	6-13	Sa	9:45-10:45 a.m.	8/28-5/14/22	\$140 Res/\$150 Non-Res

All dance classes held at the Delta Township Enrichment Center at 4538 Elizabeth Rd.

\*Class fee can be paid in 2 installments\*

\*\*Children's Dance Company is by audition/invitation only. Audition is held on Sa, 8/28, 9:45-10:45 a.m.

\*All class dates, times, and locations are subject to change\*

**Register by visiting [www.deltami.gov/registration](http://www.deltami.gov/registration) • 323-8555**

# sports programs

## Adult Coed Halloween Kickball Tournament

Come and play in this fun Halloween kickball tournament which will include a Halloween costume contest, bon fire, team photo, tournament t-shirt, and much more! Only full team registrations will be accepted. Registration form located at the Delta Township Parks and Recreation office or online at [www.deltami.gov/parks](http://www.deltami.gov/parks). Call 323-8555 for more information. Deadline: W, 10/6  
Date: Sa, 10/23  
Ages: 16+  
Fee: \$20 per person  
Location: Erickson Park

## Adult Coed Indoor Volleyball

Teams play six against six. Each team must have at least three males and three females, twelve players per team limit. Only full-team registration will be accepted. There are no individual player fees. Deadline: Tu, 12/31  
Dates: Tu, 1/4/22-2/22/22  
Times: 6 or 7p.m.  
Ages: 16+  
Fee: \$125 per team (8 matches)  
Location: Waverly East Intermediate

## Youth Coed Basketball Camp

High-intensity multi-tasking drills will be used to increase mental and physical speed of play. Basketball University will supply the instructors and equipment. No refunds after 10/5  
Deadline: Tu, 10/5  
Dates: W, 10/6-10/27 (make-up date 11/3)  
Grade/Time:  
1st/2nd – 5:45 p.m.  
3rd/4th – 6:45 p.m.  
5th/6th – 7:45p.m.  
Fee: \$30 Res/\$35 Non-Res  
Location: Waverly East Intermediate

## Youth Basketball

An eight-week instructional program which stresses fun and fundamentals of the game. Practices and games are held on Saturdays within a one-hour time block. Coaches will be parents who want to volunteer. Please mark registration forms if you are interested in coaching. Coaching packets will be provided for season. Deadline: F, 12/10  
Dates: Sa, 1/8/22-2/26/22 (make-up date 3/5)  
Age (Coed): 5-6, 7-8, 9-10  
Fee: \$40 Res/\$45 Non-Res. \$10 late fee after 12/10, if space permits. \$15 for athletic jersey if needed  
Location: Waverly East Intermediate

## Youth Basketball Gym Supervisor Wanted!

Gym Supervisor must be 18+ years of age. Responsibilities include opening/closing gym on Saturdays, set-up & break-down of hoops, tables and chairs, responding to questions at the gym. Paid position. Please call the Parks and Recreation office if you are interested.

## Youth Coed Spring Soccer

Participants have the choice of playing traditional (6v6, 7v7, or 8v8) or micro (4x4) soccer. Participants, coaches, and parents will learn soccer skills and rules. Deadline: F, 3/25/22  
Practices: Begin the week of April 13, 2020 on a weekday chosen by the coach and last for 8 weeks.  
Games: Saturdays, 4/23/22-6/4/22 (make-up date 6/11)  
Age: 4-10 as of 4/23/22  
Fee: \$40 Res/\$45 Non-Res  
\$10 late fee after 3/25, if space permits (late fees are not refundable)  
\$15 for athletic jersey, if needed  
Location: Mt. Hope Park

## Itty Bitty Kickers

Practices and games are held on Saturdays within a 40-minute time block. Micro soccer rules and size 3 soccer balls will be used. Deadline: F, 3/25/22  
Dates: Sa, 4/23/22-5/21/22 (make-up date 6/4)  
Age: 3 as of 4/23/22  
Fee: \$25 Res/\$30 Non-Res. \$10 late fee after 3/27, if space permits. (late fees are not refundable) \$15 for athletic jersey, if needed.  
Locations: Mt. Hope Park

## \*New Program\* Coed Wiffleball

Remember playing wiffleball in your backyard? You can now get your friends together and play in a fun Wiffleball League this Fall with a chance to win Champion t-shirts! Only full team registrations will be accepted. Registration forms located at the Delta Township Parks and Recreation office or online at [www.deltami.gov/parks](http://www.deltami.gov/parks). Deadline: 9/3/22  
Dates: Tu&Th, 9/14/22-10/14/22  
Fee: \$20 per player  
Ages: 13-15, 16-18, 18+  
Location: Sharp Park, Delta Mills  
Teams: 8 players maximum, male & female players allowed but not a requirement.  
Manager Meeting: 9/9/22, 6:30 p.m., Delta Administration Building

## Thank You to our Volunteer Coaches!

Thank you to our youth girls softball, boys baseball, coed t-ball, coed soccer, coed NFL flag football, and basketball coaches. These programs could not run without all of your hard work!



Register by visiting [www.deltami.gov/registration](http://www.deltami.gov/registration) • 323-8555



# parks & rental facilities

## Park Shelter & Pavilion Rentals

Delta Township park shelters and pavilion are available for rental. Shelters can be rented at Sharp Park, Delta Mills, and Grand Woods. The pavilion at Grand Woods is available for rental as well. Most shelters include access to electricity, grills, restrooms, and playgrounds.

**Reservations are taken starting on the first business day of the year** for dates between May 1 and September 30. Reservations may be made over the phone by calling 323-8555 or in person at the Parks, Recreation and Cemeteries office in the Delta Township Administration Building. Full payment is due when reservation is made. Refunds will only be issued for cancellations made at least 21 calendar days prior to the rental date.

### Sessions Available

Half Day: 10 a.m.-3 p.m.

Half Day: 4-9 p.m.

Full Day: 10 a.m.-9 p.m.

### Shelter Reservation Fees

**Sharp Park, Delta Mills Park and Grand Woods Park**

Half Day: \$50 Res/\$60 Non-Res

Full Day: \$80 Res/\$100 Non-Res

### Pavilion Reservation Fees

**Grand Woods Park**

Half Day: \$75 Res/\$85 Non-Res

Full Day: \$130 Res/\$150 Non-Res

Check availability and reserve by calling 323-8555.



Grand Woods Shelter

## Rental Facilities

Looking for indoor space to host your next group event or family gathering? Contact the Parks and Recreation Department at 323-8555 to find out how you can rent the Joseph E. Drolett Community Center or Enrichment Center.

### Joseph E. Drolett Community Center

The Joseph E. Drolett Community Center is located on the corner of Canal Road and Willow Highway and features a bi-level floor plan that seats up to 100 people on the upper floor and 70 people on the lower floor. The entire building is handicap accessible, air-conditioned, and non-smoking. Use of the kitchen, oven, stove, sink, electricity, tables, and chairs are included in the rental.



Community Center, Upper Floor

### Enrichment Center

The Enrichment Center is located at 4538 Elizabeth Road and has an Activity Room and several classrooms that can be reserved. The entire building is handicap accessible, air-conditioned, and non-smoking. Activity Room rentals can accommodate up to 75 people and include use of the kitchen, sink, refrigerator, microwave, electricity, tables, and chairs. Classroom rentals can accommodate up to 40 people and include use of electricity, tables, and chairs.

### Rental Fees

**Joseph E. Drolett Community Center (this facility can be booked up to 2 years in advance)**

F, 12 p.m.-1 a.m., \$265 Res/\$315 Non-Res\*

F, when booked with Saturday, \$145 Res/\$195 Non-Res

Sa, 8 a.m.-1 a.m., \$400 Res/\$500 Non-Res

Su, 11 a.m.-12 a.m., \$285 Res/\$335 Non-Res\*

\*Rental fees on township holidays are \$400 Res/\$500 Non-Res

**Enrichment Center Activity Room (can be booked up to 1 year in advance)**

F, 4-11 p.m., \$180 Res/\$240 Non-Res\*

Sa, 11 a.m.-11 p.m., \$250 Res/\$310 Non-Res\*

Su, 11 a.m.-11 p.m., \$250 Res/\$310 Non-Res\*

\*Rental fees on township holidays are \$280 Res/\$340 Non-Res

**Enrichment Center Classrooms (Limited Availability)**

M-Th, 5-9 p.m., \$15 per hour Res/\$25 per hour Non-Res

Two hour rental minimum.

**A damage deposit of \$250 and a copy of your renters or homeowners insurance policy are required with all facility rentals.**

**Check availability for any of these facilities by calling 323-8555**

# library information

## Browsing is Back at DTDL

The Delta Township District Library is open for browsing and checking out materials, computers and Wi-Fi, and more. Visit [dtdl.org](http://dtdl.org) for updates on the library's current hours and available services.

## Carside Pickup Service

DTDL continues to offer carside pickup service for library items, remote printing, Take It & Make It kits, and more delivered to your car with contactless service. Visit [dtdl.org/carside](http://dtdl.org/carside).

## Friends' Bookstore Reopening

The Friends' Bookstore, located in the library's lower level, is reopening September 7, 2021. Proceeds from the bookstore support library programs and services.

## Digital Services

DTDL cardholders have free access to a variety of digital services and collections, including ebooks and audiobooks, digital magazines, online language learning, and more. Visit [dtdl.org/digital](http://dtdl.org/digital).

## Laptops & Hotspots

DTDL offers laptop kits, available to borrow for free with a DTDL card. Each laptop kit contains a Chromebook and mobile hotspot. Hotspots are also available to borrow separately for internet access on the go. Visit [dtdl.org/laptops](http://dtdl.org/laptops).

## BookMatch

Tell us about your reading preferences and library staff will offer personalized suggestions for you or your child. Visit [dtdl.org/bookmatch](http://dtdl.org/bookmatch) for more information, with links to our book talk videos and online booklists for more reading recommendations.

## Take It & Make It

Looking for fun crafty activities for you or your kids? DTDL offers free Take It & Make It kits for youth and adults that can be picked up in the library or with our carside service. Visit [dtdl.org/make-it](http://dtdl.org/make-it).

## cloudLibrary Mobile Checkout

Skip the checkout line and borrow library items right from your phone. Download the cloudLibrary app, scan the barcodes of the items you want to borrow, and then check out within the app. Use the app to store virtual library cards, manage checkouts, and more. Visit [dtdl.org/mobilecheckout](http://dtdl.org/mobilecheckout).

## Tutor.com

Tutor.com is free with your DTDL card and provides on-demand tutoring, homework help, test preparation and writing assistance for students in grades K-Adult in over 60 subjects. Tutors are available 2-9 p.m., 7 days a week. Visit [dtdl.org/tutor](http://dtdl.org/tutor).

## TALK: Text and Learn for Kindergarten

TALK is a free texting service aimed at caregivers of children birth to five that delivers early childhood tips right to your phone. Provided by Michigan public libraries, TALK sends easy early literacy activities and local library event notifications. Text TALK to 75547 or visit [dtdl.org/earlylit](http://dtdl.org/earlylit) to learn more.

## 1000 Books Before Kindergarten

This program encourages families to read 1000 books to their children before they start Kindergarten. For each 100 books read, earn a free book and sticker from DTDL. Visit [dtdl.org/earlylit](http://dtdl.org/earlylit).

## Fall 2021 Programs

DTDL is planning a mix of virtual and in-person programs this fall. See some highlights below and visit [dtdl.org/events](http://dtdl.org/events) for a full schedule and to register.

### Adult Book Clubs

Join us for good books and conversation at our monthly book clubs.

### Storytimes

Virtual Playgroup – Wednesdays, 10:30 a.m.  
Music & Movement Storytime – Fridays, 10:30 a.m.  
PJ Storytime – Second Thursdays, 6 p.m.  
Virtual Storytimes – First Fridays, 10:30 a.m.  
DTDL Story Line – call 517-321-4014 x8 any time

### Fun for Kids & Teens

Tween Bad Art Night  
Teen Game Night  
LEGO® Creation Challenge  
Game On  
Paws for Reading  
Tween Book Club  
Virtual Cooking for Tweens & Teens  
Virtual Tabletop Gaming Club

For more information about any of the library's services and programs, visit [dtdl.org](http://dtdl.org) or call 517-321-4014. Follow us on Facebook ([@deltatwplibrary](https://www.facebook.com/deltatwplibrary)) for updates.



# community awards



Do you know a Delta Township Resident, Business or soon-to-be High School Senior that is giving back to the community in a big way? How about someone who has gone above and beyond to help others?

Here is your opportunity to help shine a light on these outstanding individuals or groups for all they do for Delta Township.

The Delta Township Community Awards Committee is seeking nominations for the 15th Annual Community Awards Program. Nominations are being sought in the following categories:

The **Citizen of the Year Award** will honor selected individual citizens whose extraordinary contributions go “above and beyond” to enhance the quality of life and general reputation of the township.

The **Young Person of the Year Award** is limited to high school seniors 2021-2022 (whether traditional high school or home-schooled) who have made a positive contribution to the community, is an example to their friends, may have excelled in academics, music, arts, athletics, etc., or has successfully faced personal challenges. A scholarship will be awarded to the selected individual.

The **Business of the Year Award** will honor selected Delta Township businesses or businesspersons who have been responsible for exceptional outcomes between and among businesses, governments, and nonprofit organizations; OR, have served as a role model for other businesses; OR, have gone above and beyond the scope of business to support and promote Delta Township. The goal is to promote shared community interests and encourage business harmony within the township and among entities of the Greater Lansing Region.

All nominations must be submitted no later than Thursday, September 30, 2021, at 5 p.m. Nominations may be submitted online (a printable PDF version is also available). If you choose to fill out a hard copy nomination form, please return it via email to [awards@deltami.gov](mailto:awards@deltami.gov), by mail to the Manager's Office, 7710 West Saginaw Highway, Lansing, MI 48917, or via fax to 517-327-1703.

For more information about the Community Awards please visit [www.deltami.gov/CommunityAwards](http://www.deltami.gov/CommunityAwards).



# s a f e t y t i p s



It's time for our kids to go back to school! Please review these important safety rules with your children.

## Safety Rules for Safe Bus Riding

School will be starting before long and in order to keep children safe while on and around buses the following rules should be followed:

Be at the bus stop early. The bus driver may not see you running for the bus if you are late; you could slip and fall under the wheels.

Wait for the bus in a safe place away from the road and the cars that are driving by. Stay back from the curb until the bus has come to a complete stop.

Sit down as soon as possible. There may be other people waiting to get on and if it takes too long for everyone to get on other drivers may get impatient and go around the bus. Someone could get hit if this happens.

Stay seated at all times, "back to back" and "bottom to bottom." Take off your backpack and put it in your lap.

Keep your hands, arms and head inside the bus at all times. A bus is wider than a car; it gets very close to trees and poles and you could be seriously injured if you have any body parts outside the bus.

Please don't eat or drink on the bus. You could choke on the food and the driver may not see you.

Listen to the bus driver and follow directions. The bus driver's instructions are for your safety.

Leave the bus carefully using the handrail so you won't fall.

Take 10 giant steps past the front of the bus before crossing in front of it. You should be able to see the driver's face. Remember, if you can't see their face they can't see you.

Wait for the bus driver's signal telling you it is safe to cross the road.

Look LEFT, RIGHT, LEFT yourself before crossing the road. The driver may not see everything.

Stay away from the bus if you drop or forget something. NEVER go back to pick up something in the road; get an adult to get it for you. If you forgot something on the bus, you can always get it later. The bus driver can't see you if you are too close to the bus.

## Burning Permits

Delta Township residents must obtain a burning permit for any open burning (bon fires, burn barrels, etc.) within the township.

Burning of yard waste or use of a burning barrel is only allowed in areas zoned agricultural. Burning permits are available at no charge at [www.deltami.gov/burnpermit](http://www.deltami.gov/burnpermit). Please call 517.321.6622 or visit the website for a complete list of Delta Township's burning regulations. The Delta Township Burning Ordinance is strictly enforced.

## Do1Thing!

Do 1 Thing is a web-based, twelve-month preparedness program that focuses on a different area of emergency preparedness each month. Emergency preparedness doesn't have to be hard or expensive. It's as easy as clicking on this month's topic, select one of the easy things

to do and do that one thing.

If you follow along for an entire year, you will be better prepared to handle most disasters and emergencies. You can jump in anytime and you don't have to do things in any order. You can choose whatever topic you like.

Visit [www.do1thing.com](http://www.do1thing.com) for further information and to be better prepared in the event of an emergency.

## Don't Waste Your Waste

Yard wastes have many valuable uses in the home landscape. They can help retain soil moisture, retard weed growth and enrich the soil.

Burning yard wastes not only wastes the value of these materials in the landscape, it also increases the risk of wildfire. Over one-third of Michigan wildfires are caused by debris burning.

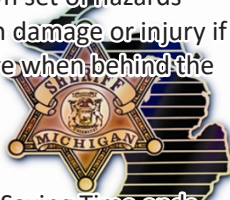
Yard wastes can be recycled by either mulching or composting them. Mulching simply refers to any technique where organic matter (such as grass clippings, leaves, small brush, etc.) is spread in thin layers on top of the ground and left to decompose naturally. Grass clippings, leaves and compost can be placed around garden vegetables and flowers to keep down weeds and retain moisture. Leaves can also be chopped up with a lawn mower and left on the lawn to decompose.

Yard wastes can also be easily prepared for composting. Composting can be done in a variety of ways. With passive methods, the yard wastes are left in a pile to decompose over time. Active methods carefully control the decomposition process to create compost faster. Both mulching and composting add valuable organic material to the soil. Organic material helps retain moisture and nutrients needed for plant growth.



## Fall Driving Tips

Fall brings its own set of hazards that can result in damage or injury if you're inattentive when behind the wheel.



### Darkness

"When Daylight Saving Time ends, many people will find themselves spending more time driving in the dark," the National Safety Council warns. "Depth perception, color recognition and peripheral vision can be compromised in the dark, and the glare of headlights from an oncoming vehicle can temporarily blind a driver." A 50-year-old driver might need twice as much light to see as well as a 30-year-old, the safety council says. And at 60 and older, we generally see road signs less clearly, have more trouble judging speed and distance, and are bothered more when headlights glare, according to the American Optometric Association.

### Critters

You're 3.5 times as likely to hit an animal, especially a deer, in November as at any other time of the year, the Insurance Institute for Highway Safety says. Deer are likely to be mating in November, and that's why you see more of them. An adult deer, the smallest of several breeds of hoofed mammals, can weigh 300 pounds or more, so that's like hitting two adult men. About 1 of every 100 drivers will hit a deer during the driver's life behind the wheel.

### Leaves

As the foliage falls and winds blow, leaves litter the road. They can cause motorists to park farther from the curb to accommodate piles, create puddles as they block drainage, hide potholes and pavement markings, prompt bicyclists to stray from their designated lanes and turn into a slick mess when they coat the road during rain. That's because wet

leaves create a mat that reduces traction no matter how new your tires are.

Then come the leaf peepers. You're familiar with these tourists if you live in some areas of the country, but even locals can be prone to slowing down if an especially beautiful display of color catches their eyes.

With both leaf peepers and fallen foliage, make sure you have plenty of stopping distance to avoid a rear-ender.

### Tires

Tires perform better on rainy surfaces if they have enough tread. And they stop faster and steer better on dry ones.

Also, proper tire pressure helps keep you rolling smoothly and safely. Expect your tires to drop at least 1 pound per square inch (PSI) of pressure each month, no matter the weather.

When the air cools in the fall, that accelerates. Tires will drop another pound per square inch of pressure for every 10 degrees of temperature drop.

Check tire pressure with a good handheld gauge from an auto parts store when the car's been sitting two or three hours. Correct pressure will be noted on a decal pasted on the driver's side door jamb or the door itself and in the owner's manual.

The pressure inscribed on the tire sidewall itself is a maximum and not the recommended inflation — though it might coincidentally match the recommended PSI for your car.

### Dampness

We think of big puddles as dangerous — and they are — because front

wheels can float and you can lose steering. That's called hydroplaning. But even before the puddles accumulate, rain can pool on the dust, grime and oil that are on all roads and make the pavement slick. That's especially true if your area hasn't had rain in a while. Slowing your speed helps. If you're on a busy road, you can drive in the tracks of cars ahead of you where the road is driest.

### Glare

The blinding distraction of sun glare waxes as summer wanes. Sounds wrong, but it's logical because the sun moves closer to the horizon. That points it straight into your eyes and makes it more likely to reflect at low angles off buildings, other cars and windows. Have your sunglasses handy. Don't look directly into the lights of oncoming traffic when you drive at night. And keep your windshield clear, so dirt streaks don't contribute to the glare.

### Fog and frost

Those harbingers of winter are fall hazards in some areas. Otherwise refreshing chilly autumn mornings can trigger fog, reducing your vision and distance perception. This is when you're supposed to use those fog lights that many cars have. They shine wide, low beams along the road and onto the edges of a street, which also is helpful for critter spotting. Don't use them instead of your regular headlights but rather in addition to low-beam headlights. Don't click on your high beams. Those make visibility worse because the bright light bounces off the fog and right back into your eyes. When temperatures have been cold enough that moisture on the road has turned to ice in spots, slow down. Pay special attention to bridges and overpasses. All those "bridge freezes before road" signs are serious.

# election information

## 2021 Scheduled Elections

November 2, 2021 – Special Election – There is a Special Election scheduled for registered voters within the Grand Ledge School District. The election is for Grand Ledge Public Schools Sinking Fund Millage Proposal. Ballots will be available by September 24, 2021. Questions about the election should be directed to the Delta Township Clerk's Office at 517-323-8500. Questions regarding the Sinking Fund Proposal should be directed to Grand Ledge Public Schools at 517-925-5400.

## 2022 Election Dates

May 3, 2022 – Special Election – There is not a May election scheduled in Delta Township at this point. The filing deadline for a May 3, 2022 election is Tuesday, February 8, 2022. For election updates please visit the Delta Township website at [www.deltami.gov](http://www.deltami.gov).

November 8, 2022 General Election  
**Voter Registration Deadline** – Election Day - Tuesday, November 8, 2022  
 Ballots will be available after September 29, 2022

## New Rights for Michigan Voters – Registering to Vote through Election Day

Proposal 3 “Promote the Vote” was a Constitutional Amendment that was passed overwhelmingly by Michigan voters in the General Election in November of 2018 by a margin of 66.8% Yes and 33.2% No. This constitutional amendment brought about the following changes for Michigan Voters for voter registration:



## Registering to Vote up to 15 days prior to Election:

### Register to vote at:

- Any Secretary of State branch office
- Your township, city or county clerk's office
- A designated state agency
- By Mail
- Online through Secretary of State Office.

## Register to Vote – 14 days before election and including Election Day (Same Day Registration):

### Register to vote at:

- Voter must appear in person at the Delta Township Clerk's Office during regular business hours and up until 8 p.m. on Election Day. Residency and identification verification will be required. Documents must have the voters name and current Delta Township address. Digital copies are acceptable.
- Additional weekend hours will be available the weekends prior to each scheduled election. Contact the Delta Township Clerk's Office at 323-8500 for additional information.

## Can I register to vote at my polling precinct on Election Day?

No, if you are not registered before Election Day, you must register in person to at the Delta Township Clerk's Office. A voter registering Election Day has choice to either vote by absentee ballot at the Clerk's Office, or to take their registration receipt to their precinct and vote, the close of polls is 8 p.m. For any questions regarding voter registration or elections, please contact the Clerk's Office at 323-8500. Visit the Secretary of State website for additional election information at [www.michigan.gov/sos](http://www.michigan.gov/sos) or the Delta Township

website at [www.deltami.gov](http://www.deltami.gov).

## New Rights for Michigan Voters – Voting by Absentee Ballot

At the General Election in November of 2018, Michigan Voters passed Proposal 3 “Promote the Vote” a constitutional amendment which made significant changes to Michigan Election Law regarding who can vote by absentee ballot in any scheduled election.

## Who is eligible to vote by “mail” absentee ballot?

All REGISTERED VOTERS are eligible to receive an absentee ballot once a written request or application has been received. A “reason” is no longer required.

## Absent Voter Automatic Application List

Delta Township maintains a list of voters who automatically are mailed an application for an absentee ballot for all elections scheduled in Delta Township. A voter can request to be placed on the “automatic absent voter application list”. Once a signed application is returned and ballots are available, the ballot will be mailed to the voter. The voter can vote the ballot in the comfort of their home and then return ballot by mail, in person to the Delta Township Clerk's office or drop off at black drive-up night deposit box located on north side of Delta Township Administration Building or the walk up black deposit box at the east entrance of the building.

To be placed on our Automatic Absent Voter Application List please call the Clerk's Office Monday-Friday 8 a.m.-5 p.m. at 323-8500. If you would like to sign up electronically go to the Delta Township website at [www.deltami.gov](http://www.deltami.gov). Select the Govern-

ment heading at top and from drop down list click on Election and Voter Registration. Select the Absent Voter Information tab and go to “Automatic Absent Voter Application List Request” and complete form online. An application for an absent voter ballot will be sent for all scheduled elections in Delta Township.

### Picture ID Requirement When Voting in Michigan

Michigan voters who vote at the polls and in-person absent voter requests must comply with the requirement of showing picture identification. The most common sources of picture identification are your driver’s license or a state ID card. The following forms of picture identification may also be used if they are current:

- Federal or state government-issued photo identification (Driver’s license or state identification card from any state).
- U.S. passport
- Military ID card with photo
- Student ID card with photo from high school or an accredited institution of higher education
- Tribal ID card with photo.

Voters without picture identification: Michigan election law anticipates that not all voters will have picture identification. Voters who do not bring picture identification to the polls or do not possess picture identification can vote by signing an affidavit of voter not in possession of identification.

### Election Worker Recruitment

Delta Township is seeking election workers for the following positions: electronic pollbook inspectors, help desk inspectors, general inspectors, and absent voter counting board inspector to work elections. All positions are paid positions. Chairpersons are paid \$18 hour, Chairs in Training are paid \$15 hour, and

Help Desk Inspector, Electronic Poll Book Inspector and General Inspectors are paid \$12 hour. All required training is paid at the hourly rate applicable for the position you are hired for. To qualify to work in Delta Township, an individual must be a registered voter within the state of Michigan, have no felony convictions, complete an application, and attend mandatory training prior to every election. The positions require applicants to be available for long hours on Election Day.

If interested, please contact the Delta Township Clerk’s Office at 323-8500 or complete an application at the link below for the election worker application.

[https://www.deltami.gov/Document\\_Center/Government/Election%20Documents/Election%20Inspector%20Application.pdf](https://www.deltami.gov/Document_Center/Government/Election%20Documents/Election%20Inspector%20Application.pdf)

### Summer Property Taxes

2021 Summer Property Taxes are payable beginning July 1, 2021 and due September 14, 2021. Payments by check can be sent by mail or submitted in our drop boxes located at the north and east entrances of the Administration Building. We also offer automatic payment, in which funds are remitted from your bank account to Delta Charter Township automatically on the due date. This is a free service and ensures payment is received on time. Enrollment can be completed online on the Accounting Department page at [deltami.gov](http://deltami.gov). Please note, this is not an ongoing service, a new form must be submitted annually. Tax information is available 24/7 online at [www.deltami.gov](http://www.deltami.gov) by clicking on the Property Information on the homepage. Please call 323-8510 with any questions.

### Passport Drive

The Delta Township Clerk’s Office accepts passport applications during regular office hours Monday-Friday 8 a.m.-5 p.m. year around. APPOINTMENTS ARE REQUIRED – Call 323-8500 to schedule a passport appointment.



The Delta Township Clerk’s Office will be offering one more extended hours passport drive during 2021. APPOINTMENTS ARE REQUIRED – Call 323-8500 to schedule a passport appointment. The Delta Township Clerk’s Office will be open extended hours on the following date for the acceptance of passport applications. (Form DS-11 ONLY):

### 2021 Passport Drive

Wednesday, September 16 – 5-7 p.m.

Please visit the U.S. Department of State website for documentation requirements, fees, and applications at [www.travel.state.gov](http://www.travel.state.gov). Two payments are required: (1) Payable to U.S. Department of State for processing of your passport and must be a personal check or money order as the payment is mailed with the passport application to the U.S. Department of State and (2) Payable to Delta Township for the acceptance fee of \$35 and pictures if a picture is purchased through Delta Township. One official passport quality photo is required when submitting a passport application (Form DS-11 ONLY) and can be obtained at the Clerk’s Office for a \$12 fee per applicant. The fee(s) due to Delta Township can be by cash, check, or credit/debit card. For questions or further information please call the Delta Township Clerk’s Office at 323-8500.



# utilities information

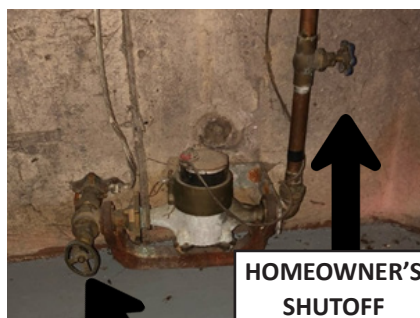
## Homeowner's Water Meter

The Utility Department recommends that all homeowners identify the location of their water meter. A water emergency within your home could happen at any time and usually without any notice. Minutes matter, knowing where and how to shut off the water supply to your home could potentially save you hundreds of dollars in water damage or destroyed property. The Utility Department's response time during non-business hours may take a couple hours or more before a service technician is on site at the home and can be able to locate and turn off the valve. Most meters can be found in the basement. If you have a finished basement, your meter may be located in a closet or in a cubby behind paneling or drywall. In cases like this, there should be a door to the cubby to allow quick access to the meter. If your home has a crawl space or no basement, your meter could be located in a meter pit outside the home or in a closet, utility room or a garage. **If you cannot locate your water meter, please contact the Utility Department and set up a time when a service technician can stop by and locate it for you.**

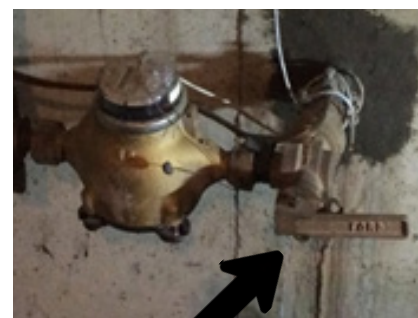
If you encounter a situation in which water is spraying due to a leak, turn the shut off valve on the house side of the meter clockwise to turn to water off to the house. If you do not have a valve on the house side of the meter, it would be advantageous to have a plumber install one. If the leak is at the meter, you may turn the Township's valve off. Two different valve styles are depicted in the pictures shown here.



METER LOCATED IN CUBBY



TOWNSHIP'S SHUTOFF



TOWNSHIP'S SHUTOFF

## Vehicle Lights – Green Color

If you wonder why or what the flashing green or green and yellow lights you see on certain vehicles mean please read on. In May of 2016, the governor signed into law the use of flashing green or green and yellow lights for public works vehicles. Green lights are designed to get better visibility in all weather conditions. Green lights indicate there is a municipal worker (i.e. State, County, City, or Township worker) either driving or working in the roadway. Green flashing lights are prohibited for private individual or commercial use. So when you see vehicles with these lights flashing please slow down and drive with caution around them.



# recycling programs

## Delta Township Recycling Center

5717 Millett Highway

### Winter Hours: November-March

Tuesdays – 8 a.m.-4 p.m.

Wednesdays – 12-6 p.m.

Saturdays – 8 a.m.-4 p.m.

### Summer Hours: April-October

Tuesdays – 8 a.m.-4 p.m.

Wednesdays – 12-8 p.m.

Saturdays – 8 a.m.-4 p.m.

### Closed Holidays

The Recycling Center will be closed:

September 4, November 27,  
and December 25.

\*Residential Use Only -  
No Commercial\*

## Bicycles

Bicycles are accepted in any condition at the recycling center. They are refurbished and returned to the community by The Kids Repair Program. Volunteers are needed to work with staff to teach kids bike repair, bike safety, and bike maintenance. Volunteers may also help with supply inventories, grant writing, office support, or public relation materials. For more information call 517-755-4174.

## American Flag Disposal

Boy Scout Troop 111 has located their American flag collection container at the recycling center. They will ensure the flags are included in



one of their formal flag retirement ceremonies.

## Electronics Recycling

Delta Township offers a monthly (Saturday) event for electronics and freon recycling. A fee of \$.50 per pound will be charged for electronics and a fee of \$20 each will be charged for freon containing items. Examples of electronics include microwaves, PCs, laptops, servers, printers, copiers, scanners, LCD screens, plasma/LED/flat screens, CRT monitors, CRT televisions, projections, monitor/televisions, cell phones, answering machines, and remote controlled items. Collections of these items will take place between 9 a.m. and 12 p.m. on the following remaining dates for 2021: 9/18 & 12/18. There will be no collection in October or November. A fee of \$30 will be charged for the recycling of carbon monoxide and smoke detectors. For questions or more information please call the Clerk's Office at 323-8500.

## Fall De-Leafing

Yard waste recycling will be available **free for Delta Township residents only, October 16-December 4.** Identification and resident verification is required.

## Yard Waste

Yard waste will be accepted through October 13 and open to all Delta Township residents. Fees apply (see below) and identification and resident verification is required. Please call the Clerk's Office at 323-8550 if you have any questions.

## 2021 Paper Shredding Event

Saturday, September 18, 2021 – 8 a.m. -12 p.m. – Delta Township  
Locations are released upon completion of registration. Register at <https://www.eatoncounty.org/1088/2021-Paper-Shredding-Events>

## Accepted Recycling Items

Delta Township's Recycling Center accepts the following products or materials to be recycled: cooking oil, polystyrene foam, household batteries (please tape the circuits on lithium, 9 volt and larger batteries), cellular phones, ink cartridges, plastics with #1-7 symbol on bottom, metals, clear and colored glass, paper, boxboard, CFL bulbs, and phone books. Please remove all lids and caps from plastic containers prior to recycling. Pop or beer box containers, containers designed to go in the freezer or refrigerator, or plastic containers that hazardous waste comes in, such as motor oil or anti-freeze, are not accepted. For a complete listing of items accepted at the Delta Township Recycling Center and to obtain the monthly recycling newsletter visit [www.deltami.gov](http://www.deltami.gov).

## 2021 Yard Waste Rates

\$1.25 per 30-gallon paper bag or  
\$8.50 per cubic yard

## Vehicles

Based on Average Approximate Depth

**S10 Pickup – \$12 level load (1.4 cubic yard)**

**Full Size Pickup – \$23 level load (2.7 cubic yard)**

**Mini Van w/open back – \$8.50 per foot (1 cubic yard)**

## Trailers

**4'x6' – \$6 per foot (.9 cubic yard/foot)**

**4'x8' – \$8 per foot (1.2 cubic yard/foot)**

**5'x8' – \$10 per foot (1.5 cubic yard/foot)**

**6'x10' – \$15 per foot (2.2 cubic yard/foot)**

Delta Charter Township  
7710 West Saginaw Highway  
Lansing, MI 48917

## RESIDENTIAL CUSTOMER

ECRWSS  
PRSTD STD  
U.S. Postage  
PAID  
Permit No. 718  
Lansing, MI

**Delta Township  
Administrative Offices**  
7710 West Saginaw Highway  
323-8500, 323-8599 (Fax)  
Monday-Friday 8 a.m.-5 p.m.

**Waverly East  
Intermediate Pool**  
3131 West Michigan  
(office located at the  
Enrichment Center,  
4538 Elizabeth Road)  
484-5600  
Monday-Friday 10 a.m.-3 p.m.

**Hillside Cemetery**  
6415 Delta River Drive  
Information: 323-8500

**Delta Center Cemetery**  
7301 West St. Joe Highway  
Information: 323-8500

**Enrichment Center**  
4538 Elizabeth Road  
484-5600  
Rental Information: 323-8555

**Delta Township  
District Library**  
5130 Davenport Drive  
321-4014  
<http://www.dtdl.org/>  
[@deltatwplibrary](mailto:@deltatwplibrary)



**Recycling Center**  
5717 Millett Highway  
Information: 323-8500

**April 1-October 31**  
Tuesday 8 a.m.-4 p.m.  
Wednesday 12-8 p.m.  
Saturday 8 a.m.-4 p.m.

**November 1-March 31**  
Tuesday 8 a.m.-4 p.m.  
Wednesday 12-6 p.m.  
Saturday 8 a.m.-4 p.m.

**Joseph E. Drolett  
Community Center**  
7550 West Willow Highway  
Rental Information: 323-8555

**Delta Fire Station #1**  
811 North Canal Road  
321-6622 (Non-Emergency)  
Monday-Friday 8 a.m.-5 p.m.

**Delta Fire Station #2**  
7720 W. Grand River Ave.  
Grand Ledge, MI 48837

**Delta Fire Station #3**  
215 Snow Road

**Eaton County Sheriff/  
Delta Patrol**  
7708 Administration Drive  
372-8217 (Non-Emergency)  
Monday-Friday 8 a.m.-5 p.m.

**EATRAN** 371-3312 (Eaton Co.)

**Anderson Park**  
3207 Wardell Road

**Delta Mills Park**  
7001 Old River Trail

**Erickson Park**  
4220 South Canal Road

**Grand Woods Park**  
4500 West Willow Highway

**Hawk Meadow Park**  
6160 Delta River Drive

**Hunter's Orchard  
Park**  
7242 Old River Trail

**Lake Delta**  
3½ miles south of Saginaw  
Highway on Canal Road

**LeLand Park**  
½ mile west of Waverly on  
St. Joe Highway

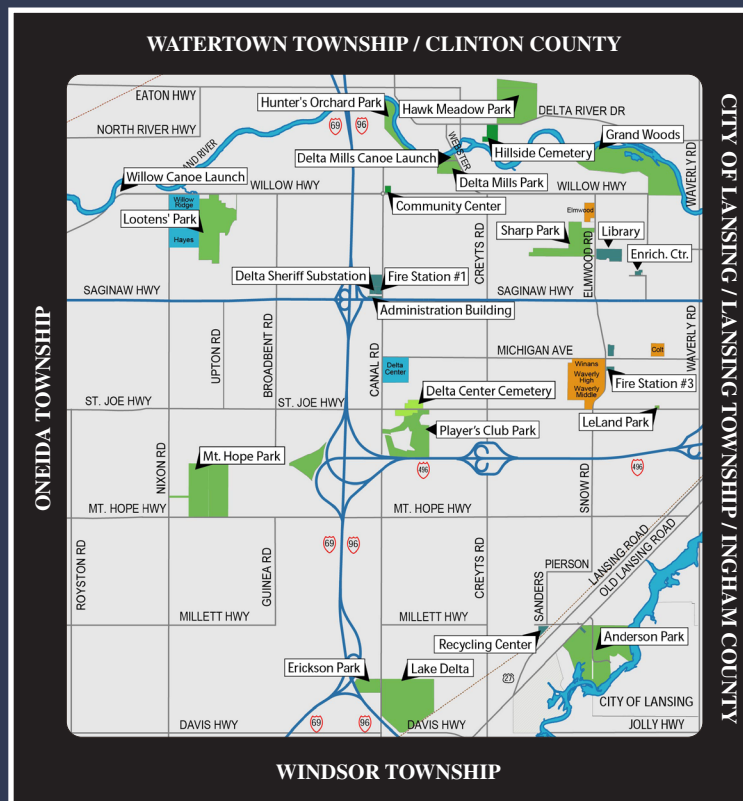
**Lootens Park**  
East of Nixon Road on  
Willow Highway

**Mount Hope Park**  
7419 East Mt. Hope Highway  
Grand Ledge

**Player's Club**  
South of St. Joseph on Canal

**Sharp Park**  
1401 Elmwood Road

**Willow Canoe Launch**  
6507 Willow Highway  
Grand Ledge



*For a department directory including phone numbers and an overview of responsibilities, please see page 3.  
Unless specified, all addresses are Lansing, MI 48917.*