



Addendum No. 1: Dated August 3, 2021, to bidding documents for the Water Treatment Plant Improvements, Town of Culpeper, Virginia, WW Associates Project No. 219044.00.

From: WW Associates

To: All Bidding Document Holders of Record.

This addendum forms a part of the bidding documents and modifies the project manual and drawings dated July 9, 2021. Acknowledge receipt of this addendum in the space provided on the bid form. Failure to do so may subject the bidder to disqualification.

Miscellaneous

The following people participated in the August 2, 2021, pre-bid tele-conference held at 10:00 AM:

Herb White	WW Associates, Inc.
Robert Nester	Town of Culpeper
Jim Hoy	Town of Culpeper
Jay Nash	Waco, Inc.
Andy Gregson	WGK Construction
Torben Fussler	RJ Smith, Co.
Steve Diehl	LCW Construction
Kyle Drumheller	WGK Construction
Chris Graves	C.A. Murren & Sons, Co.

Section 01300 Bid Form

Paragraph 4: Add the following:

“The Notice to Proceed date will be following the receipt of the Owner-furnished equipment.”

Section 01400 General Requirements

Paragraph 1.11.1: Delete last sentence and replace as follows:

“Electrical power is available for use inside the filter building.”

Section 01500 Supplementary Conditions

Paragraph 1.3.3.2.1: Revise as follows:

“2013 edition”

Paragraph 5: Delete the following:

“A sample Certificate of Insurance is included at the end of this Section for use as a template by your agent.”

Section 11200 Annular Flume and Vacuum Filter System

Add section 11200, attached herein.

DRAWINGS

Drawing No. C-3 – Existing Conditions and Demolition Plan – Plan View

Add the following note:

1. Remove and replace two (2) existing vacuum pumps with new Owner-furnished vacuum pumps.

Delete the following note:

1. “Demolish 4-inch air scour piping (location shown approximate only)”.

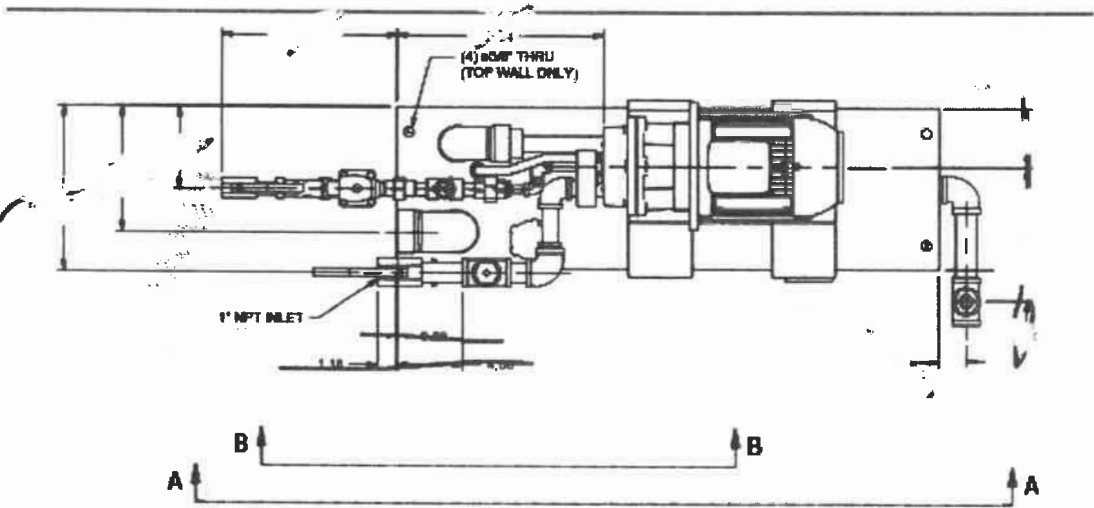
Drawing No. C-4 – Existing Conditions and Demolition Plan – Section A

Revise as follows:

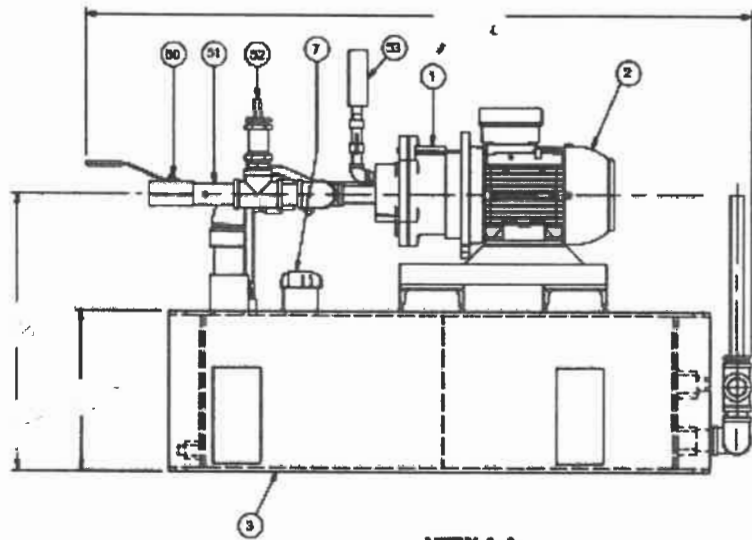
1. Revise “vacuum pumps remain” to read “remove existing vacuum pumps and install new Owner-furnished vacuum pumps.”

Drawing No. C-12 – Greenleaf Filter Trough System Filter Vacuum Pump Isometric

Add Sketch 1 and Sketch 2, attached herein.



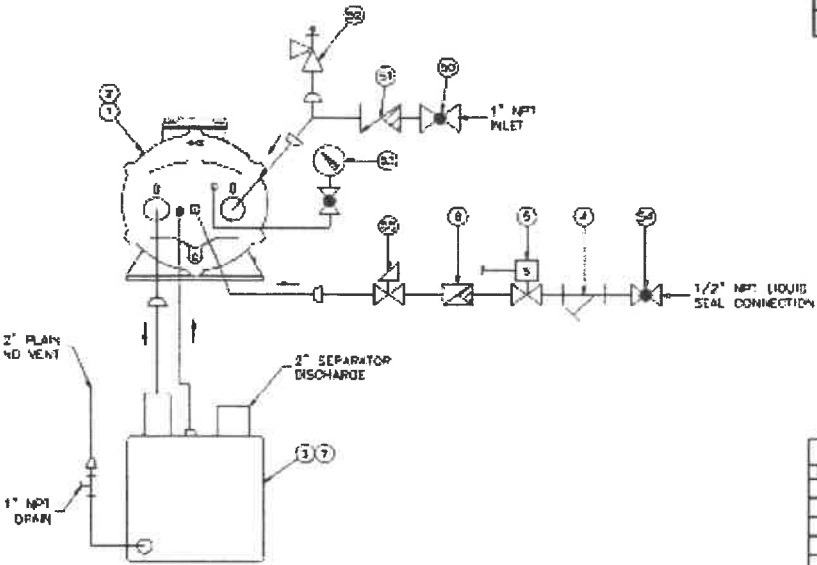
PLAN VIEW



VIEW A-A
SEAL LINE & DISCHARGE REMOVED
FOR CLARITY

VACUUM PUMP ASSEMBLY
(TYP OF 2) Sketch 1 NTS

REVISIONS			
REV	DESCRIPTION	DATE	APPROVED
A	ORIGINAL	04/16/12	HLS
B	CHANGES PER ECN# 13-081	2/20/13	HLS



FLOW DIAGRAM

BILL OF MATERIAL		
ITEM	QTY	DESCRIPTION
1	1	VACUUM PUMP
2	1	MOTOR
3	1	SEPARATOR
4	1	STRAINER
5	1	SOLENOID VALVE
6	1	FLOW CONTROL VALVE
7	1	CAP

ITEMS LISTED BELOW ARE FURNISHED ONLY IF SPECIFICALLY ORDERED. SEE ENGINEERING DATA SHEET.

BILL OF MATERIAL		
ITEM	QTY	DESCRIPTION
30	1	INLET ISOLATION VALVE
31	1	INLET CHECK VALVE
32	1	RELIEF VALVE
33	1	VACUUM GAUGE W/ ADJUSTING COCK
34	1	SEAL ISOLATION VALVE
35	1	FLOW SWITCH

NOTES:

1. REFER TO ENGINEERING DATA SHEET FOR CERTIFICATION AND ITEMS SPECIFICALLY FURNISHED FOR THIS ORDER.
2. FOR INSTALLATION AND OPERATION SEE INSTRUCTION BULLETINS.
3. SOLIDLY GROUND UNIT. DO NOT USE PIPING SYSTEM FOR GROUND.
4. FOUNDATION BOLTS ARE NOT FURNISHED

VACUUM Pump Assembly
SKETCH NO. 2 (TYP OF 2) NTS

NOTE: INSTALL PUMPS & PIPING AS SHOWN.
 BILL OF MATERIAL IS OWNER FURNISHED BY SUEZ.

Section 11200
Annular Flume and Vacuum Filter System

1 GENERAL

1.1 Summary

1.1.1 The Contractor shall install one (1) Owner-furnished replacement Greenleaf filter system, including two (2) vacuum pumps as described in these specifications and in strict compliance with the Contract Drawings.

1.1.2 The replacement components shall consist of an annular inlet flume, inlet siphons, and vacuum pump system. All components shall be 304SS. The Contractor shall furnish and install all vacuum piping, vacuum gage, gate valve and related appurtenances.

1.2 Qualifications

1.2.1 The manufacturer of the filter system is Suez (formerly Infilco Degremont). Suez scope of supply is included herein.

1.3 Quality Assurance

1.3.1 The contractor shall be responsible for furnishing, installing, testing, and placing in satisfactory operation all mechanical equipment, instruments, monitoring devices, appurtenant process equipment, piping, electric and manual operated valves, control instrumentation and equipment, and accessories. The Contractor shall coordinate all work with the Manufacturer to guarantee a complete, operating and satisfactory system.

1.3.2 The equipment supplier shall provide detailed shop drawings of all equipment and accessories, including all piping required for the complete operation of the system, whether or not such piping is shown in engineering drawings.

1.4 Warranty

1.4.1 The Manufacturer shall warrant the equipment being supplied, to the Owner, against all defects in workmanship and materials for a period of one (1) year from the date of startup or eighteen (18) months from shipment, provided that the plant installation, startup and subsequent operations are performed in strict accordance with written and oral instructions provided by the Manufacturer.

1.4.2 The Manufacturer shall replace or repair any part or parts which are determined to be defective during the warranty period, provided that the defects are not a result of misuse or neglect.

2 PRODUCTS

2.1 General

- 2.1.1 The filter system shall be supplied by one system manufacturer to ensure compatibility between components. Supplier shall be Sherwood-Logan & Associates, Inc., and contact person shall be Matt Harrison, 804-560-5410.
- 2.1.2 The filter system to be installed shall be the Greenleaf Filter Control System as manufactured by Suez.

2.2 Greenleaf Filter Control

2.2.1 Vacuum Tank

- 2.2.1.1 The operating platform shall contain a Schedule 20 304L Stainless Steel vacuum tank consisting of a compartmentalized vessel with high and low vacuum chambers for actuating the backwash and inlet siphons.
- 2.2.1.2 Interconnecting Schedule 20 304L Stainless Steel piping and tubing from the vacuum pump to the vacuum tank, and from the vacuum tank to the backwash and inlet siphon valves, together with the necessary solenoid pilot valves, shall be provided. Provide piping from vacuum tank to inlet siphons, and to backwash siphons, and from vacuum tank to the center core.
- 2.2.1.3 Contractor shall provide all vacuum piping required for complete usable operation whether shown in engineering drawings or not.

2.2.2 Annular Flume and Inlet Siphons

- 2.2.2.1 The inlet water distribution assembly shall consist of an annular flume designed to receive the flow of inlet water and discharge it equally through inlet siphons to each filter cell. Construction of the annular flume and inlet siphons shall be Schedule 20 304L Stainless Steel.
- 2.2.2.2 The annular flume shall be fabricated in five (5) sections and field welded to provide a watertight assembly.
- 2.2.2.3 Inlet siphons shall be shipped loose for field assembly.

2.2.3 Liquid Level Control

- 2.2.3.1 Contractor shall provide any required fittings for its complete operation with the filter system. Reinstall existing liquid level control device.

2.2.4 Solenoid Valves

- 2.2.4.1 All solenoid valves shall be supplied by the Contractor along with all appurtenances required for their operation with the vacuum tank.

3 EXECUTION

3.1 Delivery, Storage, and Handling

- 3.1.1 All materials and equipment shall be shipped, stored, handled, and installed in such a manner as not to degrade quality, serviceability or appearance as specified herein.
- 3.1.2 The filter system shall be installed in strict accordance with the manufacturer's installation drawings and printed recommendations and as specified. Obtain from the filter manufacturer such written installation details recommendations, and training required to acceptably interface the filter underdrain system with all surrounding structures, including any requirement for grouting, anchorage, etc., and all costs of such work shall be included in the price named for completion of the work.
- 3.1.3 Contractor Performance
 - 3.1.3.1 All materials shall be installed in a neat, workmanlike manner.
 - 3.1.3.2 All equipment specified herein shall be installed in accordance with the Manufacturer's recommendations and the contract drawings.
 - 3.1.3.3 Where anchor bolts and other parts in concrete are required, such parts shall be furnished by Contractor.

3.2 Installation

- 3.2.1 Contractor shall remove platforms, walkways, and handrails prior to removal of the filter system, and shall reinstall these items following completion of filter system replacement.
- 3.2.2 Manufacturer's Installation and Startup Assistance
 - 3.2.2.1 The Manufacturer shall provide supervision services for inspection, start-up, and training. All costs for services furnished by the water treatment system manufacturer shall be included in the total price, with no additional compensation provided. Services shall be limited to a total of three (3) days.
 - 3.2.2.2 The Manufacturer's services shall be included in the contract price. The service times specified shall be considered as full eight (8) hour working days and do not include travel time.

3.3 Contractor Responsibility

- 3.3.1 The Contractor shall be responsible for furnishing, installing, testing, and placing in satisfactory operation all mechanical equipment, monitoring devices, appurtenant process equipment, piping, pneumatic and manual operated valves, control instrumentation and equipment, and accessories. The Contractor shall

coordinate all work with the Manufacturer to guarantee a complete, operating and satisfactory system.

- 3.3.2 The Contractor shall coordinate the work of the system supplier's service personnel during construction, testing, startup, calibration and acceptance of the system, and also operator training. The system design shall provide for complete operation of all signals from point to point and shall assure complete compatibility of all instrumentation and equipment.
- 3.3.3 Electrical Work: the Contractor shall remove electrical power and controls and reinstall with new equipment, including the two (2) vacuum pumps, in accordance with the National Electric Code for a complete and useable system.

End of Section