

ADDENDUM NUMBER 1

FOR THE

CITY OF CORCORAN

GATEWAY PARK

September 7, 2021



OWNER:
City of Corcoran
832 Whitley Avenue
Corcoran, CA 93212

PREPARED BY:
A&M Consulting Engineers
220 N Locust Street
Visalia, CA 93291

ADDENDUM NUMBER 1

The following additions, deletions, or modifications shall become part of the Contract Documents for the City of Corcoran Gateway Park project:

CONTRACTOR QUESTIONS:

QUESTION:

Is there a DBE requirement for this project? If so, what is the goal?

RESPONSE:

There is no DBE requirement for this project.

QUESTION:

The specification state to submit a bidder's bond electronically. Is this correct or is a paper bid bond acceptable?

RESPONSE:

A paper bid bond must accompany the bid.

QUESTION:

On sheet CD- 14.01 I counted 26 solar pole mounted light fixtures. Electrical drawing sheet ES-1.01 only shows 24 of the same light fixtures. Please advise as to which drawing sheet we should use to price this project.

RESPONSE:

Use a total of 25 solar mounted light fixtures as shown on the attached CD-14.01. Contractor shall coordinate electrical drawings with CD-14.01.

QUESTION:

What will the city do to consider the current inflation of construction materials?

RESPONSE:

The project award will be determined 09/23/21, a week after the bid opening. Contracts are expected to be fully executed the following week thereafter. This should give plenty of time to lock in prices provided from supplier's quotes.

QUESTION:

How many working days does this project have?

RESPONSE:

The Work shall be finally completed and ready for final payment in accordance with the Contract Documents within 360 calendar days after the date the Notice to Proceed is issued.

QUESTION:

Is there a predetermined dumpsite?

RESPONSE:

There is no predetermined dumpsite. It is the contractor's responsibility to haul of any waste materials.

QUESTION:

Is there any lead contamination or lead deposit on the site?

RESPONSE:

The city is unaware of any lead contamination of the project site.

QUESTION:

Who is responsible for the material testing? Including the dirt?

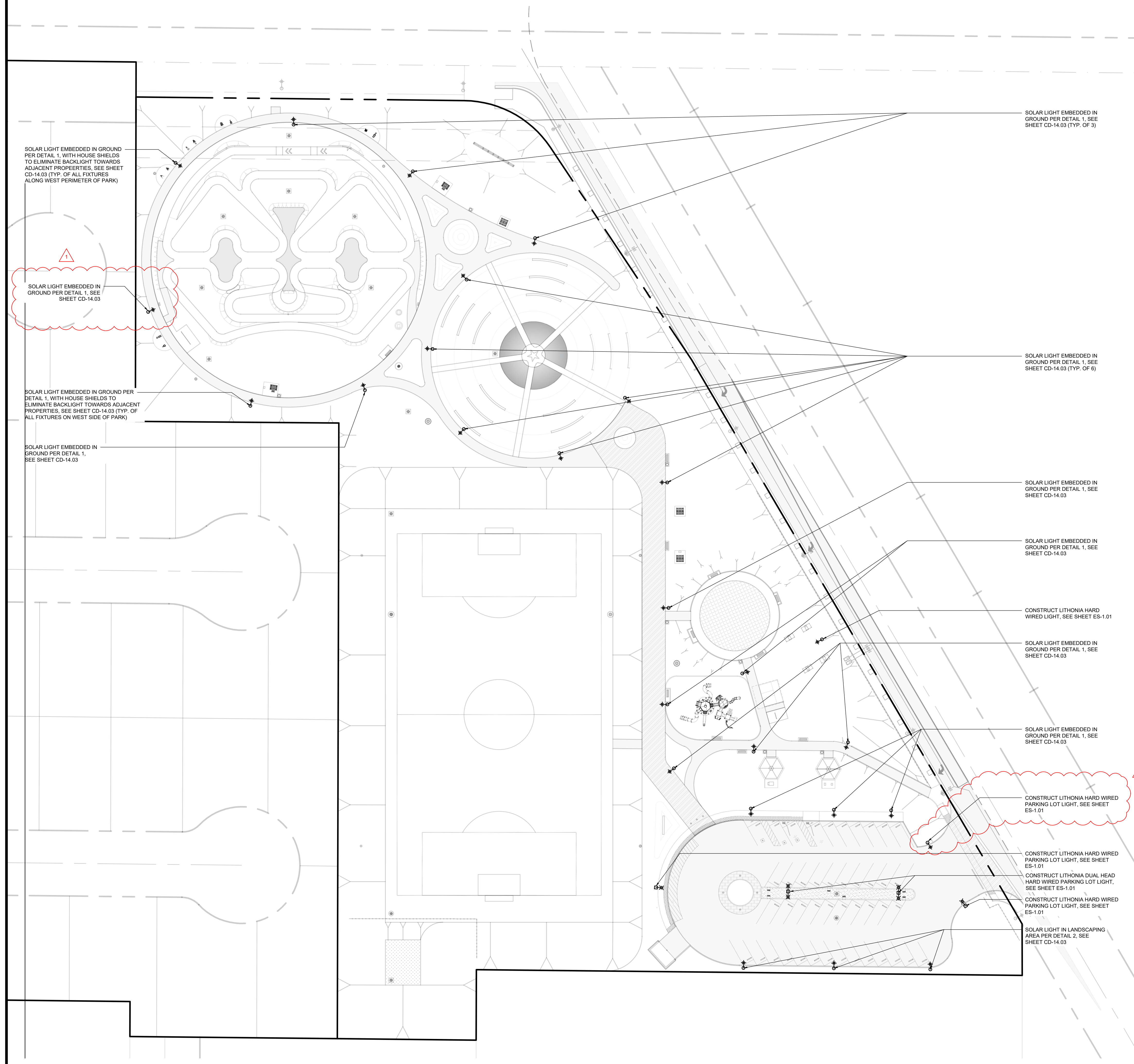
RESPONSE:

Initial test will be the responsibility of the City/Owner. Any failed test after the initial tests will be the responsibility of the contractor.

NOTE: One copy of this Addendum Number 1 shall be signed by the Contractor and must be submitted with the bid as acknowledgement of receipt and the acceptance of this Addendum Number 1.

Prepared by: _____	_____
Orf _____	September 7, 2021
A&M Consulting Engineers	Date

Accepted by: _____	_____
Contractor (signature)	Date



SOLAR LIGHT EMBEDDED IN GROUND PER DETAIL 1, WITH HOUSE SHIELDS TO ELIMINATE BACKLIGHT TOWARDS ADJACENT PROPERTIES. SEE SHEET CD-14.03 (TYP. OF ALL FIXTURES ALONG WEST PERIMETER OF PARK)

SOLAR LIGHT EMBEDDED IN GROUND PER DETAIL 1, SEE SHEET CD-14.03

SOLAR LIGHT EMBEDDED IN GROUND PER DETAIL 1, WITH HOUSE SHIELDS TO ELIMINATE BACKLIGHT TOWARDS ADJACENT PROPERTIES. SEE SHEET CD-14.03 (TYP. OF ALL FIXTURES ON WEST SIDE OF PARK)

SOLAR LIGHT EMBEDDED IN GROUND PER DETAIL 1, SEE SHEET CD-14.03

SOLAR LIGHT EMBEDDED IN GROUND PER DETAIL 1, SEE SHEET CD-14.03 (TYP. OF 3)

SOLAR LIGHT EMBEDDED IN GROUND PER DETAIL 1, SEE SHEET CD-14.03 (TYP. OF 6)

SOLAR LIGHT EMBEDDED IN GROUND PER DETAIL 1, SEE SHEET CD-14.03

SOLAR LIGHT EMBEDDED IN GROUND PER DETAIL 1, SEE SHEET CD-14.03

CONSTRUCT LITHONIA HARD WIRED LIGHT, SEE SHEET ES-1.01

SOLAR LIGHT EMBEDDED IN GROUND PER DETAIL 1, SEE SHEET CD-14.03

SOLAR LIGHT EMBEDDED IN GROUND PER DETAIL 1, SEE SHEET CD-14.03

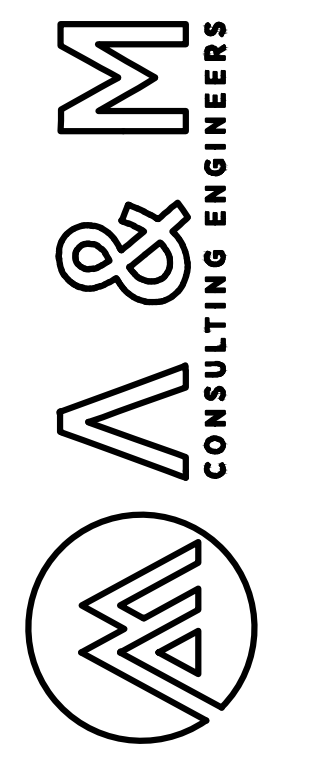
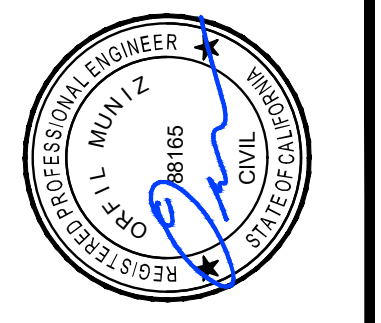
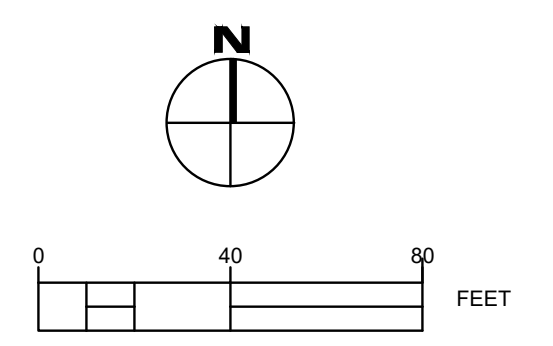
CONSTRUCT LITHONIA HARD WIRED PARKING LOT LIGHT, SEE SHEET ES-1.01

CONSTRUCT LITHONIA HARD WIRED PARKING LOT LIGHT, SEE SHEET ES-1.01

CONSTRUCT LITHONIA DUAL HEAD HARD WIRED PARKING LOT LIGHT, SEE SHEET ES-1.01

CONSTRUCT LITHONIA HARD WIRED PARKING LOT LIGHT, SEE SHEET ES-1.01

SOLAR LIGHT IN LANDSCAPING AREA PER DETAIL 2, SEE SHEET CD-14.03



ENGINEERING PLANS FOR:
CITY OF CORCORAN GATEWAY PARK
 SHEET TITLE:
SOLAR LIGHT PLAN LAYOUT

REVISIONS
 NO. 1
 UPDATED LIGHTING

SCALE: 1" = 40'
 JOB NO: 220-013
 QAWCC: JA
 FILE: 220-013_CD-14.DWG
 DATE: 8/16/2021



SHEET NO.
CD-14.01