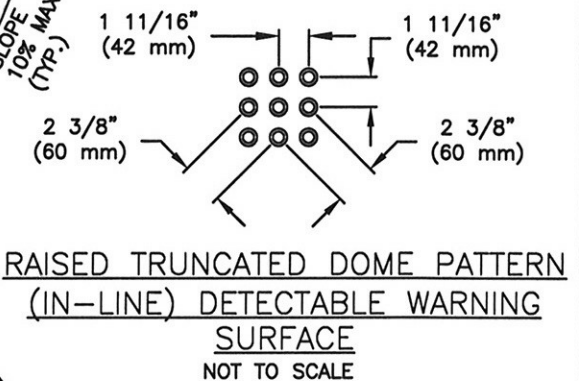
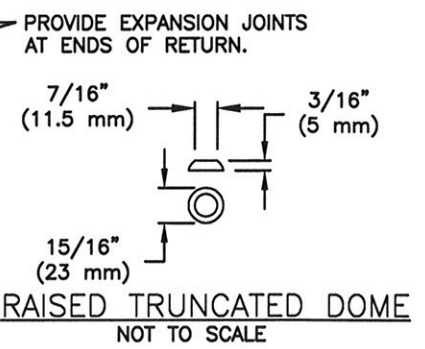
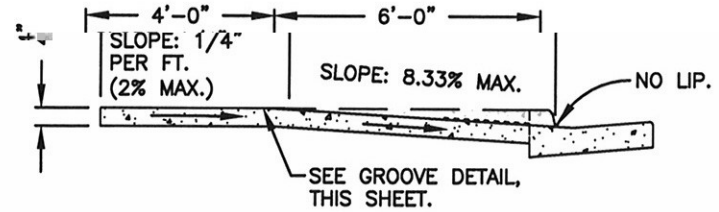


**PLAN VIEW**  
NOT TO SCALE

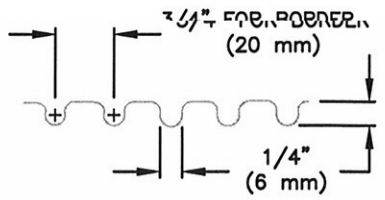


DETECTABLE WARNING SURFACE  
(SEE DETAILS ABOVE AND REQUIREMENTS IN THE CALTRANS SPECIAL PROVISIONS.)

VARIES  
4'-6" RESIDENTIAL  
9'-6" COMMERCIAL



**SECTION A-A**  
NOT TO SCALE



**GROOVE DETAIL**  
NOT TO SCALE

**NOTES:**

1. RAMPS SHALL HAVE NO ABRUPT CHANGES IN ELEVATION OR ANGLE OF SLOPE.
2. SIDEWALK & RAMP THICKNESS SHALL BE 4". COMPACT SUBGRADE TO 90% MINIMUM.
3. ARTERIAL AND MAJOR COLLECTOR STREET INTERSECTIONS (ARTERIAL-ARTERIAL, ARTERIAL-MAJOR, MAJOR-MAJOR) SHALL HAVE 30' MIN. RADIUS RETURNS WHERE FEASIBLE. ALL OTHER STREETS SHALL REQUIRE A 20' MIN. RADIUS RETURN.
4. THERE SHALL BE A 0.30' MIN. SLOPE AROUND A TYPICAL RETURN.
5. FORMS TO REMAIN FOR A MIN. OF 24 HOURS.
6. THERE SHALL BE NO SIDEWALK OBSTRUCTIONS. ALL POWER POLES, STREET LIGHTS, FIRE HYDRANTS & MAIL BOXES SHALL BE SET BACK BEHIND SIDEWALK UNLESS APPROVED OTHERWISE BY CITY ENGINEER.
7. SIDEWALK RAMP SHALL HAVE A 45 DEGREE BEVEL FINISH ACROSS THE SLOPE OF THE RAMP.
8. DEEP JOINT TO BE AT PERIMETER OF 12' WIDE BORDER w/GROOVES.
9. SEE CONCRETE NOTES (C-1), AND CITY STANDARD SPECIFICATIONS.
10. CONCRETE SHALL BE MINIMUM FIVE SACK MIX. (2500 P.S.I. MIN. IN 28 DAYS).

**CITY of CORCORAN • Department of Public Works**

Standard Drawing for:

**WHEELCHAIR RAMP DETAIL**

(20 FOOT RADIUS RETURN)

APPROVED: City Engineer

05/19/08  
Date

Revised:

C-6