

Pennsylvania Wildfire Prevention

An Hour of Prevention Saves a Day of Suppression



The Message

As Smokey Bear says-

“Only You Can Prevent Wildfires.”

Smokey’s message certainly rings true here in Pennsylvania, as 99% of all wildfires are human caused. Whether the result of a campfire, debris burning, equipment use, or arson, the majority of wildfires are preventable.

Proper care and precaution when outdoors is the responsibility of all Pennsylvanians. Debris burn caused fires account for over half of all wildfire occurrences within the Commonwealth. Ensure the following items have been properly considered prior to burning debris to reduce the probability that your debris burn will cause a wildfire.

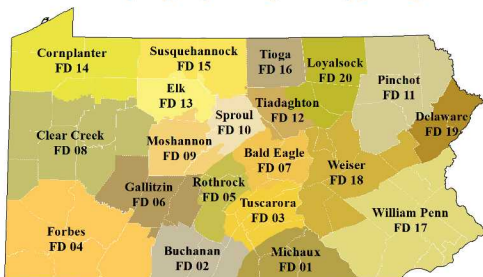
Always consider alternatives to outdoor burning such as composting, recycling, or chipping woody debris.

For More Information:

If you are interested in more information about preventing wildfires, please contact your local forest district office.

A listing is available at:

www.dcnr.pa.gov/stateforests/findaforest



Reduce the Risk

Weather – Do not burn on windy or very dry days.

Fire Danger – Check with your local Forest District office to ascertain today’s Fire Danger. As a general rule, only burn when the Fire Danger has been determined to be **LOW**.

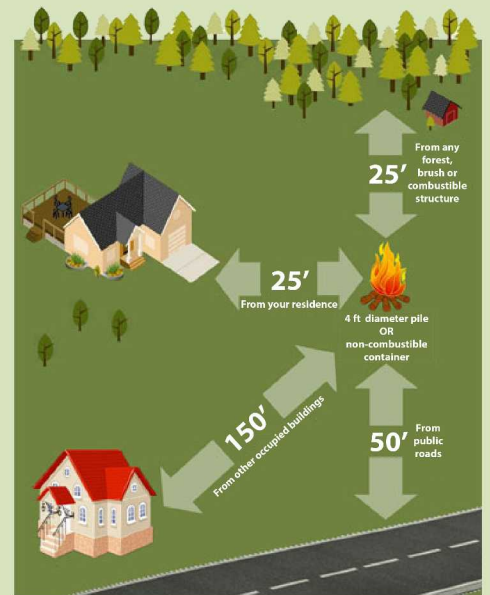
Location – Always burn away from utility lines, overhead limbs, buildings, and flammable items.

Size – Keep the burn area small, no larger than 4-feet in diameter.

Perimeter – Maintain a cleared area devoid of vegetation 10-feet adjacent to the burn area.

Tools – Have a garden hose, rake, and shovel on-hand at the burn area.

Extinguish – Ensure to properly drown the fire with water. Mix the water and ashes with a shovel. Repeat process until no heat is sensed by the back of your hand when held near the ashes.

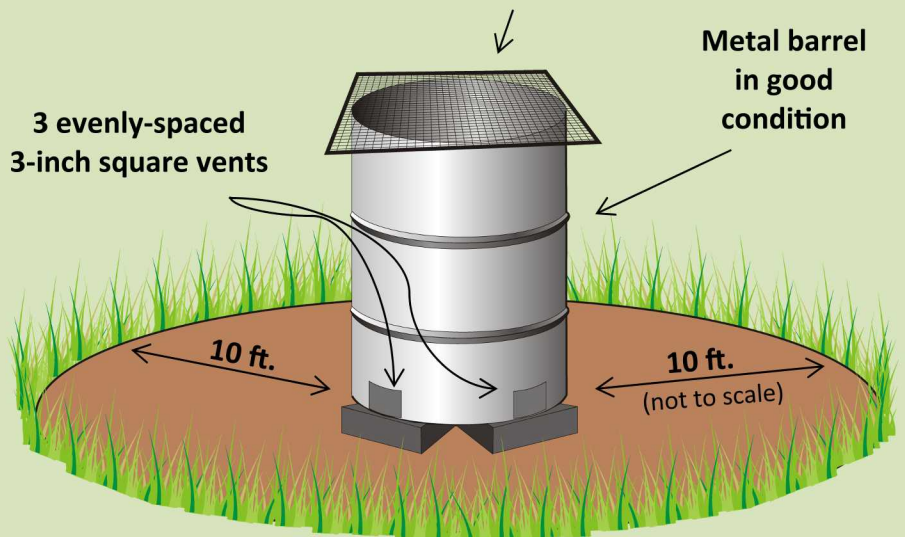


Supervision – An adult should always be present while burning debris. Never leave the burn area unattended.

Expanded metal screen with holes not larger than 1/2 inch

Metal barrel in good condition

3 evenly-spaced 3-inch square vents



Ground cleared down to mineral soil or gravel at least 10 feet around barrel