



Buckingham County Planning Commission

Work Session Agenda

Monday, October 16, 2023 6:00PM

Buckingham County Administration Building

Peter Francisco Meeting Room

<https://youtube.com/live/MhNWoPOUHSU?feature=share>

1. Call to Order by Planning Commission Chairman
 - Invocation
 - Pledge of Allegiance
 - Establishment of Quorums
2. Adoption of Agenda
3. Discussion Topic
 - a. Comprehensive Plan with Commonwealth Regional Council
4. Commission Matters and Concerns
5. Adjournment

DRAFT Buckingham County Comprehensive Plan

II. Community Profile

A. Regional Setting and History

The County of Buckingham is located in the heart of central Virginia. The County consists of 582 square miles, and is bounded on the north by the James River and the southwest by the Appomattox River. Buckingham County is approximately 63 miles west of the City of Richmond, the state capital. It is approximately 45 miles south of the City of Charlottesville; 38 miles due east of the city of Lynchburg; and 173 miles south/southwest of Washington, DC. See Map 1.

Buckingham County was formed in 1761 from Albemarle County and was named after the Duke of Buckingham. It is the only Buckingham County in the United States. In 1821, Buckingham County resident Charles Yancey secured a design from his friend, Thomas Jefferson, for a new courthouse in Buckingham. The new courthouse, using Jefferson's design, was built between 1822 and 1824, but this courthouse and all of its records was destroyed by fire in 1869. Another courthouse was built on the same location in 1873 and is a registered Virginia Historic Landmark. An archeological study during recent courthouse renovation has revealed much information about "Jefferson's Courthouse" and the footprint of Jefferson's design has been preserved in the courthouse square landscape plan.

Portuguese born immigrant, Peter Francisco, is known for his American heroism during the American Revolutionary War. Francisco was raised by Judge Anthony Winston in Buckingham County after being found at a dock near Hopewell, VA. Francisco is known for pulling a 1,100-pound American cannon free from its gun carriage during the Battle of Camden. Francisco returned to Buckingham County after the revolutionary war and resided in his Locust Grove residence from late 1794 to the mid-1820s.

Known as the Father of Black History Month, Carter G. Woodson was born to Anna Eliza Riddle Woodson and James Woodson of New Canton. Woodson dedicated his career to the field of African American history and lobbied extensively to establish Black History Month as a nationwide institution. Woodson achieved many other notable accomplishments including completion of his doctorate from Harvard University and writing several historical works.

John Wayles Eppes was a successful planter and attorney who represented Virginia in the United States House of Representatives (1803-1811 and 1813-1815), and also served in the U.S. Senate (1817-1819). Eppes married Thomas Jefferson's Daughter Maria to which they had three children. After retiring, Eppes returned to his prosperous Tobacco plantation in Buckingham County and remained there until his death in 1823.

During the Civil War, Lee's army marched through the County during Lee's retreat on their way to Appomattox, Virginia. A marker in the cemetery of Trinity Presbyterian Church in New Canton reads, "According to the oral history of Trinity Presbyterian Church and this community, here are 45 Confederate and Union soldiers buried in mass graves directly behind this church. They left Appomattox after the surrender and headed for their homes north of here. Sick with disease, they died in a nearby camp. That they may not be forgotten, this plaque is placed by the Elliott Grays UDC Chapter #1877 2003"

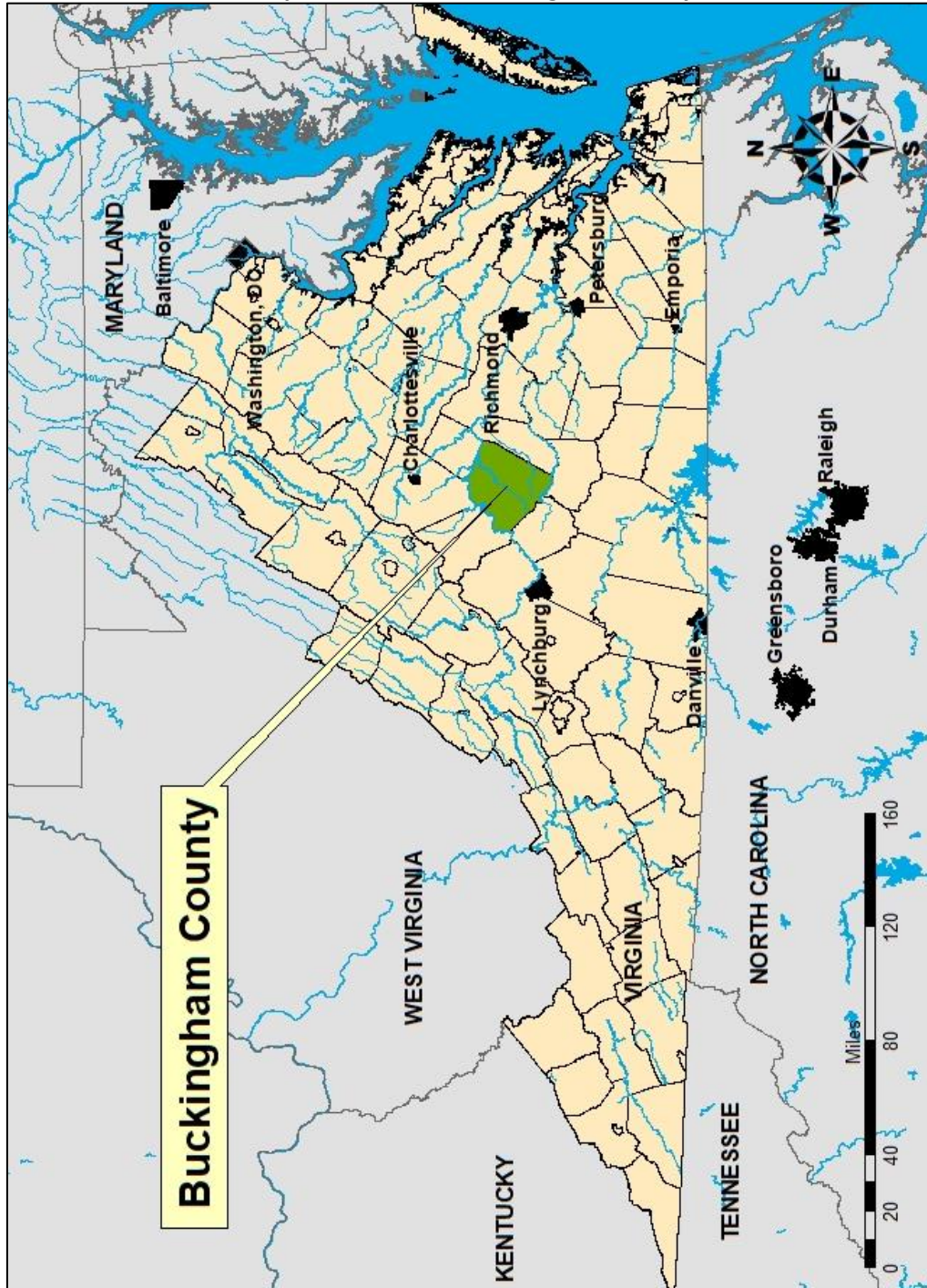
In the 21st century, large tracts of land are held by companies such as WestVaco, which sell pulpwood and other timber products to the paper mills and wood product producers. It is still largely rural, with areas devoted to recreation such as fishing and hunting. The County is home to families who can trace their ancestry to the early colonial history of Virginia. Many families still live on tracts of land that were

DRAFT Buckingham County Comprehensive Plan

granted to their ancestors in that period. Some of the land grants were originally given to French Huguenots, who resettled from London, England in the southwestern part of the county in the early 1700s.

Sources: Virginia Department of Historical Resources, Buckingham County VA Website, Monticello.org

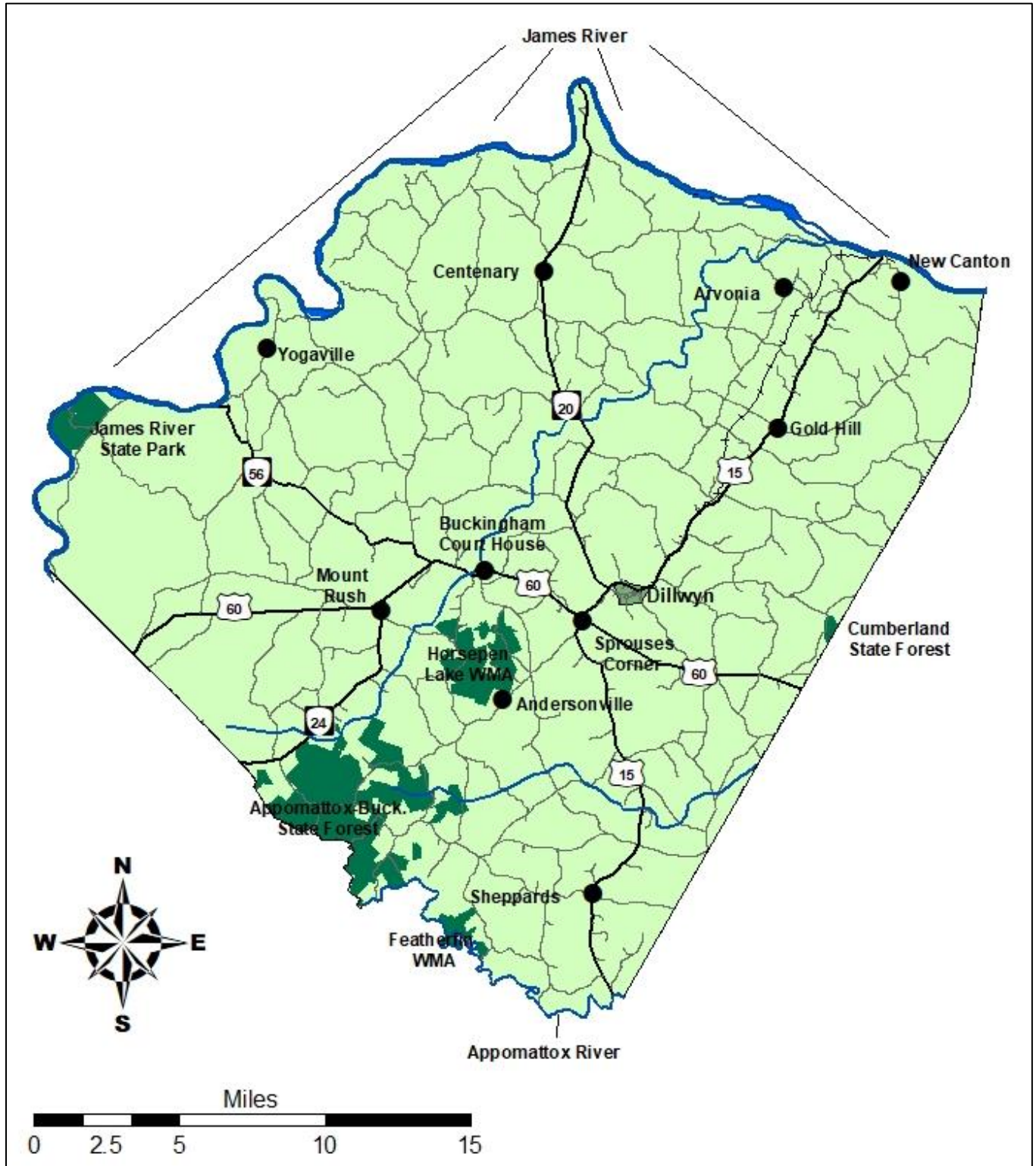
Map 1 – Location of Buckingham County



Map created by CRC – September 2023

DRAFT Buckingham County Comprehensive Plan

Map 2 – Buckingham County



Map created by CRC – September 2023

DRAFT Buckingham County Comprehensive Plan

B. Population

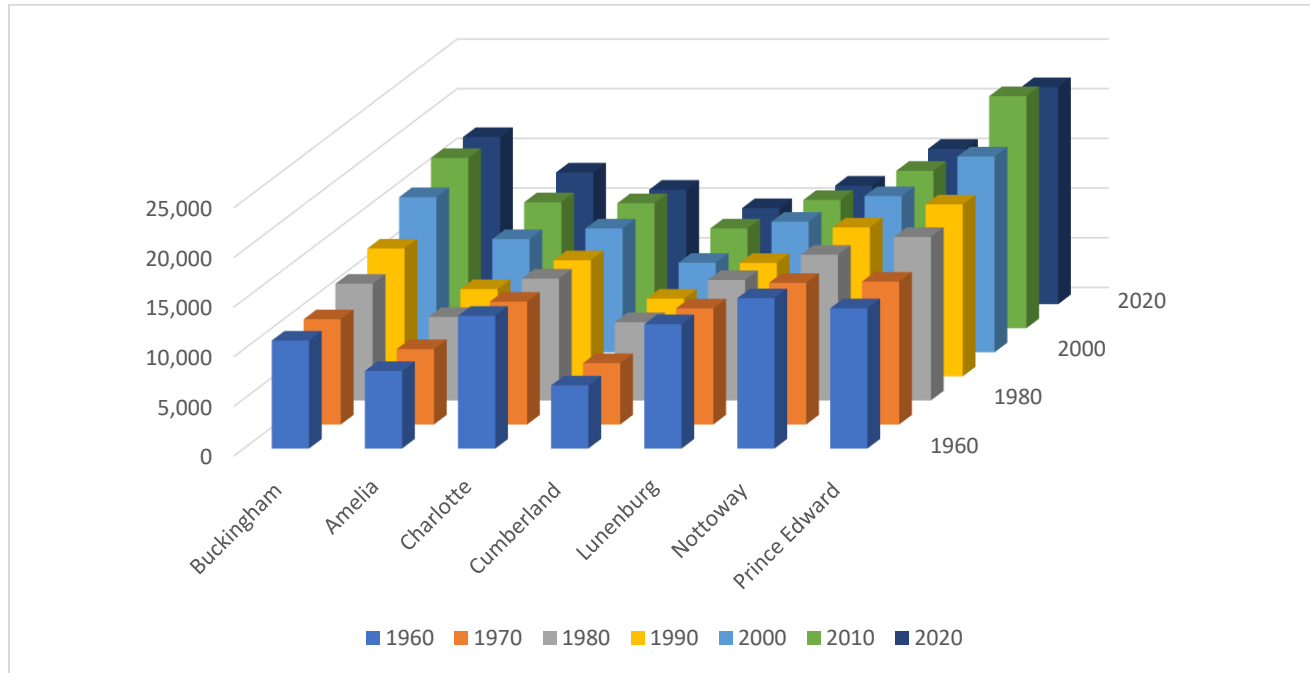
Introduction

The population section of the Buckingham County Comprehensive Plan includes an analysis of the population characteristics of the County. Population analysis often concentrates on increases or decreases in population. Important factors include changes in characteristics (age, sex, and race), rate of growth and the distribution, which can affect planning for a community. Population trends affect land use, housing, community facilities and other aspects of community development.

Past Population Trends

For the past 60 years, Buckingham County has seen its population grow steadily overall by 5,947. However, according to the 2020 U.S. Decennial Census, the 2020 population for Buckingham County (16,824) represented a decrease of 322 from the 2010 U.S. Census (see Figure 1).

Figure 1 – Population Trends, Buckingham, and Surrounding CRC Counties, 1960 through 2020



	1960	1970	1980	1990	2000	2010	2020
Buckingham	10,877	10,597	11,751	12,873	15,623	17,146	16,824
Amelia	7,815	7,592	8,405	8,787	11,400	12,690	13,265
Charlotte	13,368	12,366	12,266	11,688	12,471	12,586	11,529
Cumberland	6,360	6,179	7,881	7,825	9,017	10,052	9,675
Lunenburg	12,523	11,687	12,124	11,419	13,146	12,914	11,936
Nottoway	15,141	14,260	14,666	14,993	15,725	15,853	15,642
Prince Ed.	14,121	14,379	16,456	17,320	19,720	23,368	21,849

Sources: U.S. Census Historical Data, University of Virginia Weldon Cooper Center, 1960-2020

DRAFT Buckingham County Comprehensive Plan

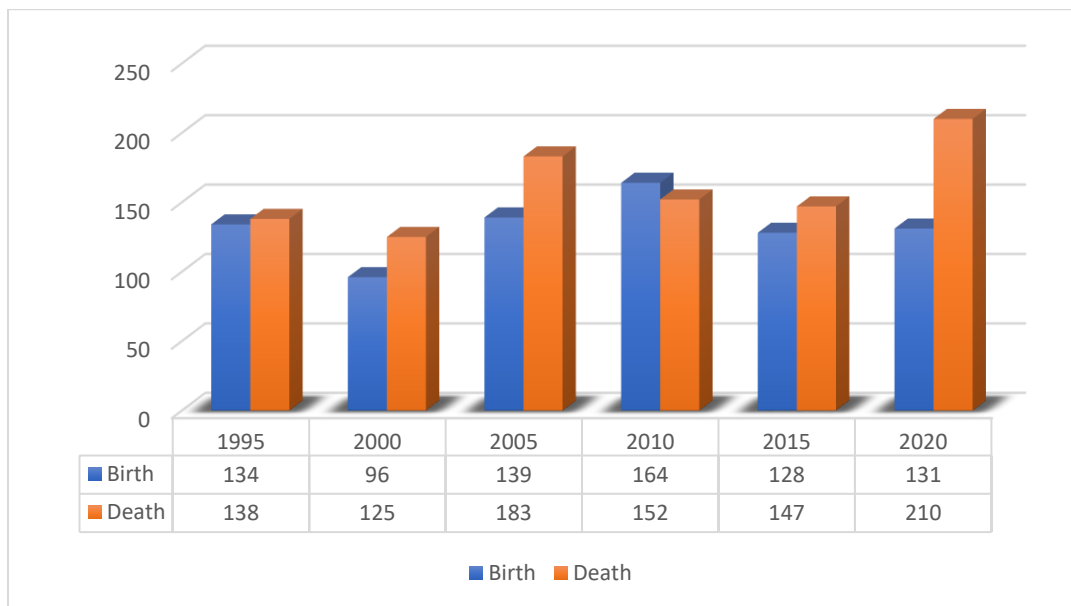
Population Density

Population density is an often reported and commonly compared statistic for localities. Population density is the measure of the number of persons per unit area. It is commonly represented as people per square mile (or square kilometer). Based on the 2020 U.S. Census population of 16,824 and a land area of 579.62 square miles, the County's population density is 29.0 persons per square mile.

Population Change Factors

There are a handful of factors that affect population change. There are three ways in which a locality can experience population increase. The first is through having more births than deaths in a given period of time (See Figure 2). Birth rates are affected by such factors as nutrition, fertility, attitudes about abortion, social values, culture, and the availability of contraception. Death rates are affected by disease, medical technology, improved health care, transportation development and nutrition. The second is when more people move into a locality versus more people leaving a locality. Pull factors for people moving into a locality are characteristics that attract people to the locality such as amenities, cost of living, and quality of life. Push factors for people leaving a locality are those characteristics of a place that cause people to leave such as lack of job opportunities and inadequate access to health care. Finally, the most common way is a combination of both factors. For 2020, there were 131 births and 210 deaths in Buckingham County. For select years going back to 1995, using every five (5) years as a benchmark, deaths outpaced births except for the year 2010 (even though the margin between deaths and births was slim).

Figure 2 – Birth and Death Rates, Buckingham County

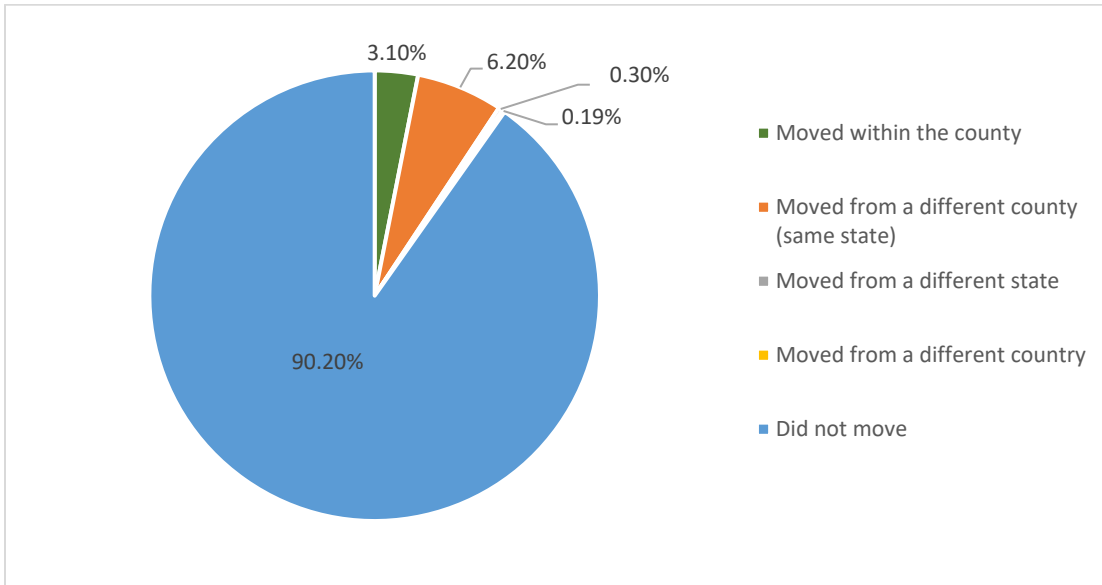


Source: Virginia Department of Health, Division of Health Statistics, 1995-2020

Migration patterns are provided by the U.S. Census American Community Survey (ACS). It is sent to a small percentage of our population on a rotating basis. The ACS collects detailed information on the characteristics of our population and housing. Since the ACS is conducted every year, rather than once every ten years, it provides more current estimates throughout the decade. Migration statistics for Buckingham County are in Figure 3 and 3A.

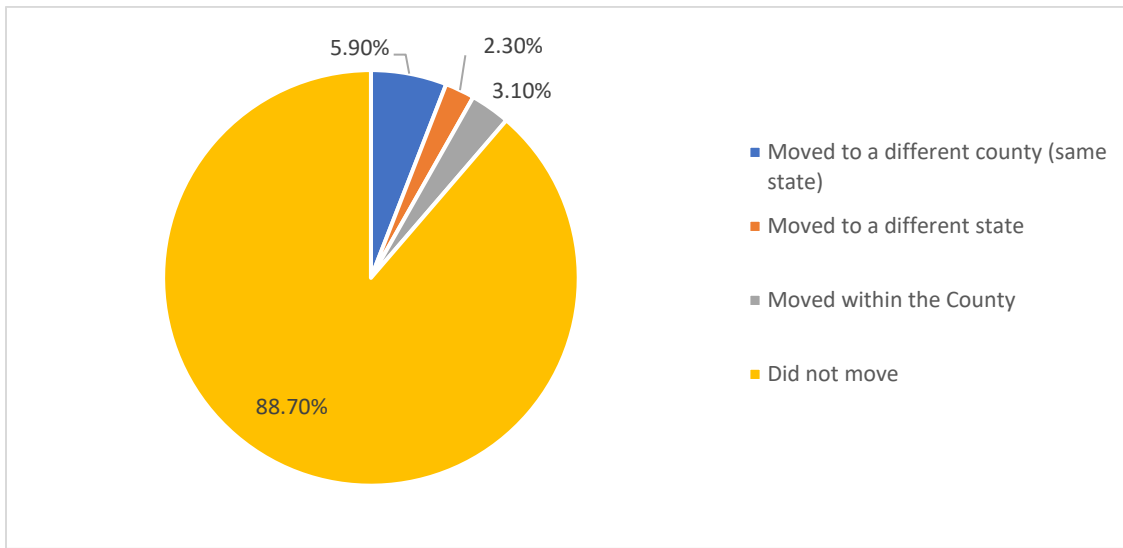
DRAFT Buckingham County Comprehensive Plan

Figure 3 – Migration In To County: Residence One Year Prior to Census, Buckingham County



Source: American Community Survey 2021 five-year estimates

Figure 3A – Migration Out Of County: Residence One Year Prior to Census, Buckingham County



Source: American Community Survey 2021 five-year estimates

Population Estimates

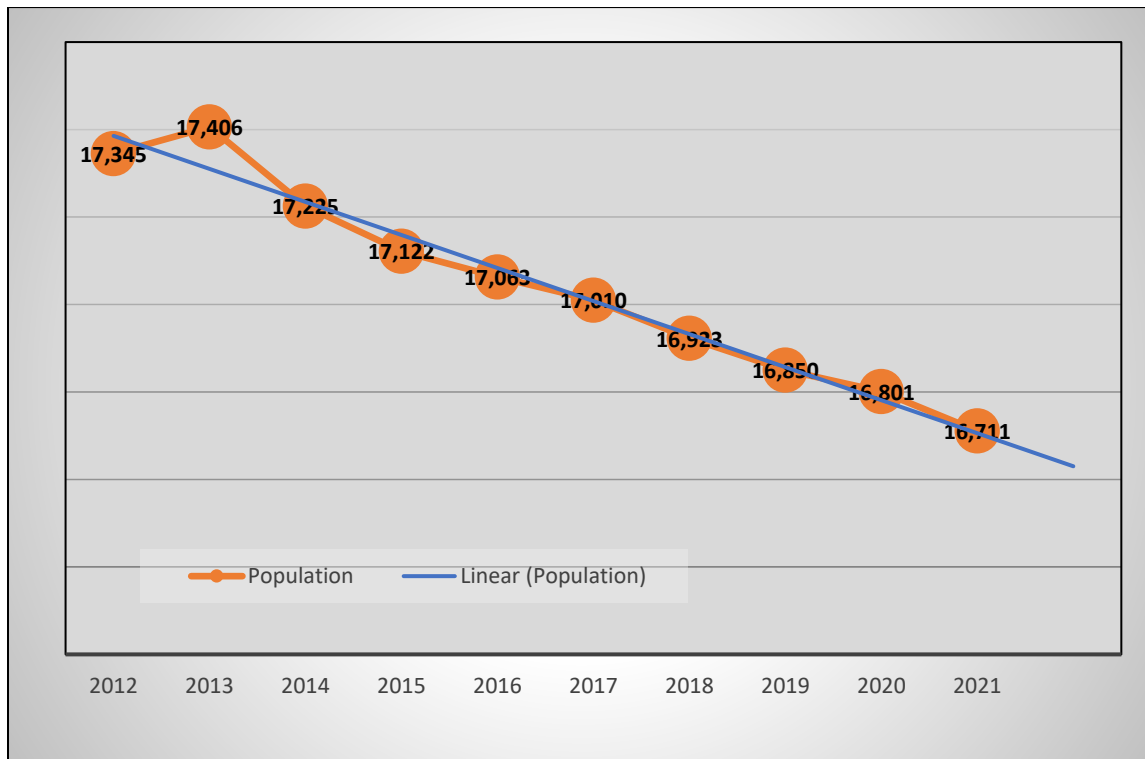
Population estimates used in this Plan were developed by the University of Virginia Weldon Cooper Center (see Figure 4). Population estimates look to the present or the recent past. They are usually much more accurate than projections because they can make use of current indicators – data series like births and deaths, licensed drivers, and school enrollment that are direct measurements, usually derived from

DRAFT Buckingham County Comprehensive Plan

governmental agency records. These estimates are used in funding formulae based on per capita allocations, planning, budgeting, applications for grants, approving and setting salaries for certain public officials, and in all manner of state agencies from Virginia Department of Transportation (VDOT) to the Virginia Department of Education (VDOE).

The locality estimates are for the mid-year, July 1, population and are released on the last Monday of the following January. For example, July 1, 2011 estimates were released on January 30, 2012. The seven-month period between the estimate date and release date is the time required to collect and clean input data from multiple state agencies, to produce the estimates, and to prepare for the release on the website and to the public. While Buckingham County saw a brief increase in population during the middle of the decade (2013), the overall trend – as indicated by the blue line in Figure 4 – shows a slight decline in population since 2012.

Figure 4 – Buckingham County Population Estimates



Source: University of Virginia Weldon Cooper Center

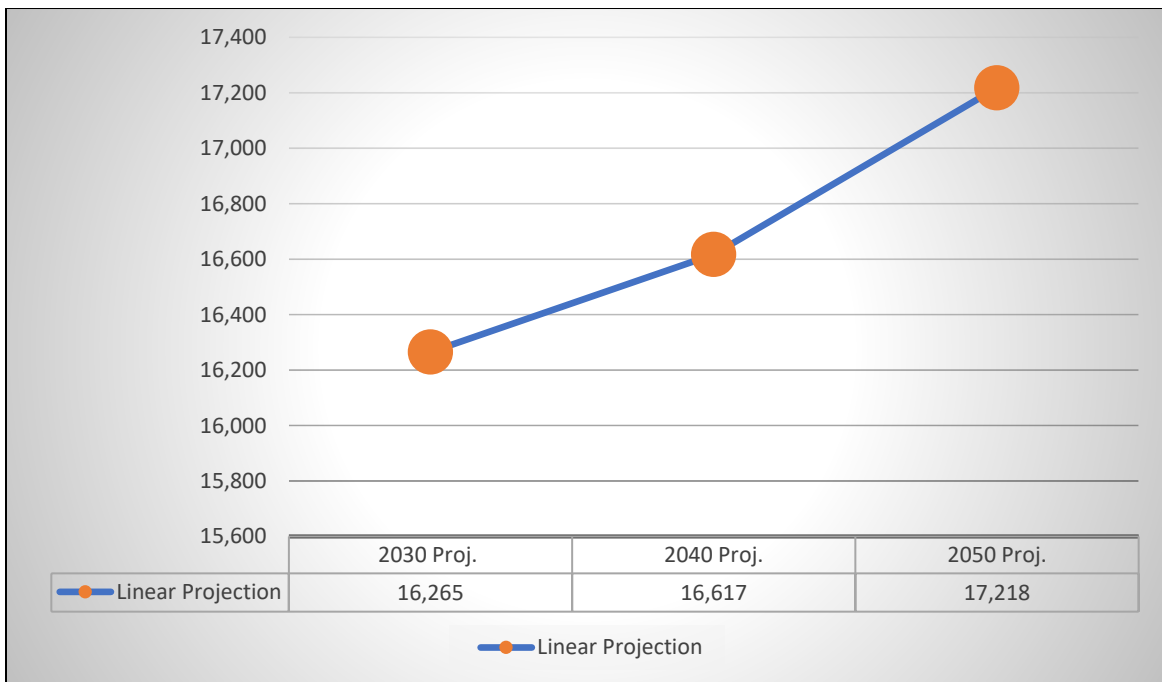
Population Projections

Population projections look to the future. They aim to produce a quantity that represents the size of a population ten, twenty, thirty years from now. As a result, projection quantities like births, deaths and net migration are an integral part of doing a projection. Additionally, most population projections are based on past trends combined with knowledge of prospective activities that may modify those trends. Projections based on past trends tend to be less accurate for areas with smaller numbers of people than for those with larger numbers. Unexpected events can drastically alter a small area's population, while only insignificantly affecting a larger area's population.

DRAFT Buckingham County Comprehensive Plan

The projection of population is essential for determining the land needs for future residential, commercial, industrial and public uses. Also, population projections can provide an indication of needs for community services, such as schools, parks and police protection to serve the future population. Figure 5 provides population projections for Buckingham County. As you can see, the County's population is projected to increase steadily over the next 25 years.

Figure 5 – Buckingham County Population Projections



Source: University of Virginia Weldon Cooper Center

Age and Sex Characteristics

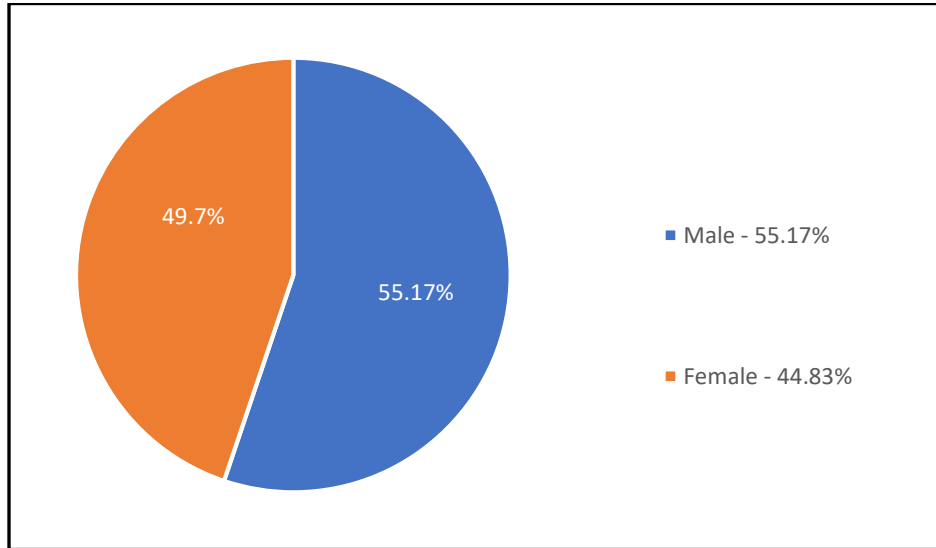
By analyzing the population's gender and age characteristics, it is possible to evaluate a locality's needs for community facilities, commercial services and housing. The data in Figures 6 and 7 is based on the 2021 U.S. Census American Community Survey (ACS) five-year estimates. The ACS replaced the decennial census long form in 2010, and collects information throughout the decade rather than only once every 10 years. The ACS produces population, demographic, social, housing and economic data in 1-year, 3-year or 5-year estimates based on a locality's population. In Buckingham County's case, five-year estimates are being used. While the ACS produces regular estimates, census population estimates (like the ones in Figures 1 and 2) produce official population estimates for the nation, states, counties, cities and towns as well as estimates of housing units for states and counties. Additionally, since ACS data is based on a sample as opposed to all people, it has a degree of uncertainty (also known as a sampling error).

As can be seen by these figures, males slightly outnumber females in the County. Another pattern shown by the numbers is that approximately 74 percent of Buckingham County residents are under the age of 60. However, AARP has identified aging in place as an increasingly popular trend for older adults. Thus, the proportion of Buckingham County's population aged 60 and over – currently just under 26 percent –

DRAFT Buckingham County Comprehensive Plan

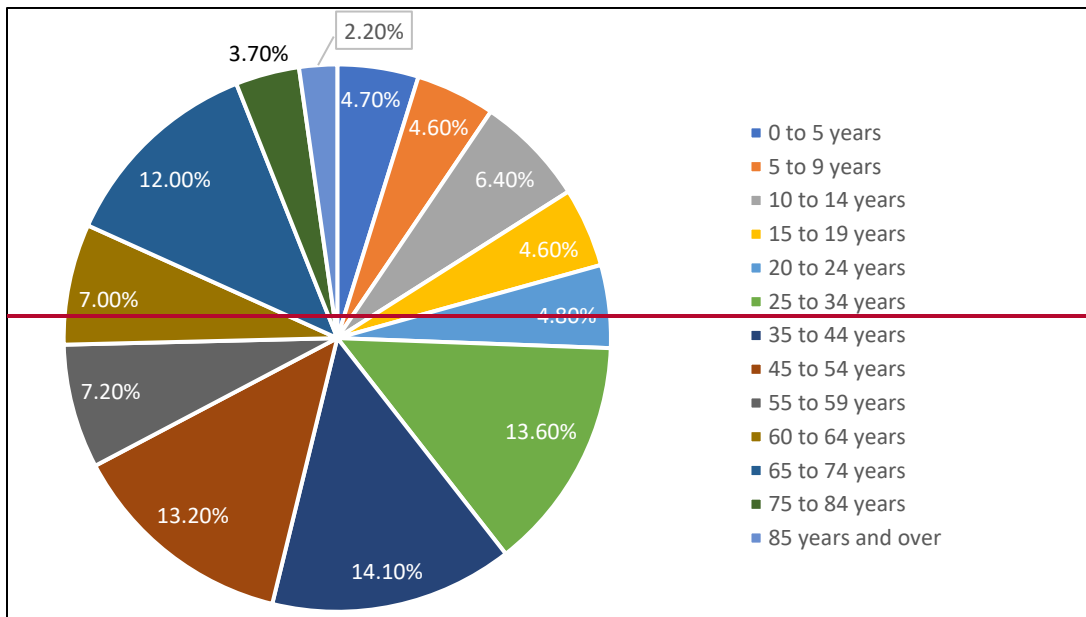
can be expected to increase in the future. [According to the 2020 US Census, Buckingham County's median age in population is 44.1.](#)

Figure 6 – Population by Gender, Buckingham County



Source: American Community Survey 2021 five-year estimates

Figure 7 – Population by Age, Buckingham County



Source: American Community Survey 2021 five-year estimates

DRAFT Buckingham County Comprehensive Plan

Figure 7 - Population Projections by Age Groups, Buckingham County

<u>Age Group</u>	<u>2010 Census</u>	<u>2020 Census</u>	<u>2030 Projection</u>	<u>2040 Projection</u>	<u>2050 Projection</u>
<u>Under 5</u>	<u>925</u>	<u>783</u>	<u>769</u>	<u>766</u>	<u>824</u>
<u>5-9</u>	<u>835</u>	<u>914</u>	<u>778</u>	<u>783</u>	<u>832</u>
<u>10-14</u>	<u>921</u>	<u>987</u>	<u>859</u>	<u>914</u>	<u>932</u>
<u>15-19</u>	<u>1,030</u>	<u>835</u>	<u>937</u>	<u>864</u>	<u>890</u>
<u>20-24</u>	<u>1,054</u>	<u>763</u>	<u>832</u>	<u>784</u>	<u>854</u>
<u>25-29</u>	<u>1,097</u>	<u>1,004</u>	<u>872</u>	<u>1,061</u>	<u>1,001</u>
<u>30-34</u>	<u>1,137</u>	<u>1,185</u>	<u>906</u>	<u>1,070</u>	<u>1,032</u>
<u>35-39</u>	<u>1,128</u>	<u>1,136</u>	<u>1,035</u>	<u>975</u>	<u>1,213</u>
<u>40-44</u>	<u>1,337</u>	<u>977</u>	<u>1,135</u>	<u>941</u>	<u>1,137</u>
<u>45-49</u>	<u>1,445</u>	<u>1,048</u>	<u>1,078</u>	<u>1,065</u>	<u>1,025</u>
<u>50-54</u>	<u>1,407</u>	<u>1,226</u>	<u>937</u>	<u>1,180</u>	<u>1,000</u>
<u>55-59</u>	<u>1,181</u>	<u>1,354</u>	<u>997</u>	<u>1,111</u>	<u>1,123</u>
<u>60-64</u>	<u>1,197</u>	<u>1,287</u>	<u>1,184</u>	<u>981</u>	<u>1,263</u>
<u>65-69</u>	<u>823</u>	<u>1,076</u>	<u>1,261</u>	<u>1,006</u>	<u>1,147</u>
<u>70-74</u>	<u>614</u>	<u>958</u>	<u>1,012</u>	<u>1,009</u>	<u>855</u>
<u>75-79</u>	<u>445</u>	<u>600</u>	<u>755</u>	<u>959</u>	<u>783</u>
<u>80-84</u>	<u>305</u>	<u>384</u>	<u>556</u>	<u>637</u>	<u>650</u>
<u>85+</u>	<u>265</u>	<u>307</u>	<u>363</u>	<u>511</u>	<u>657</u>
<u>TOTAL</u>	<u>17,146</u>	<u>16,824</u>	<u>16,265</u>	<u>16,617</u>	<u>17,218</u>

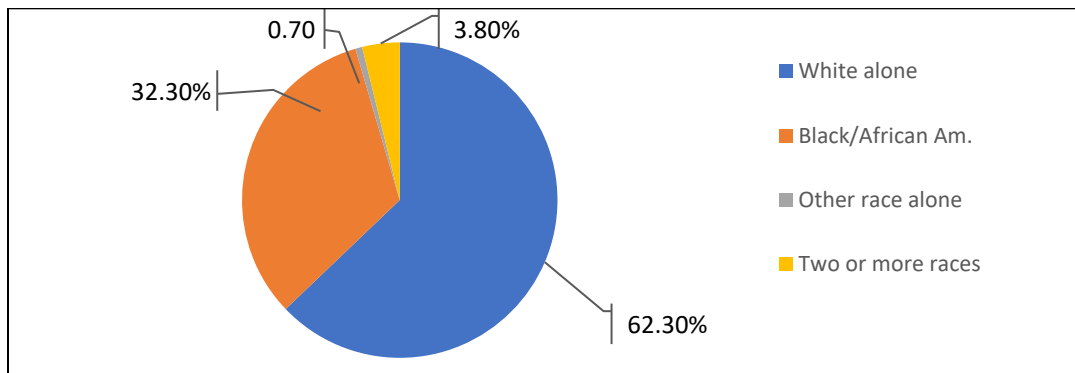
** Note: Subparts may not add up to total due to rounding

Source: U.S. Census Bureau, University of Virginia Weldon Cooper Center

Racial Characteristics

Figure 8 shows the racial characteristics for Buckingham County, based on data from the 2020 U.S. Census data. According to the data, Buckingham County has seen significant declines in minority populations.

Figure 8 – Population by Race, Buckingham County



Source: 2020 US Census Data

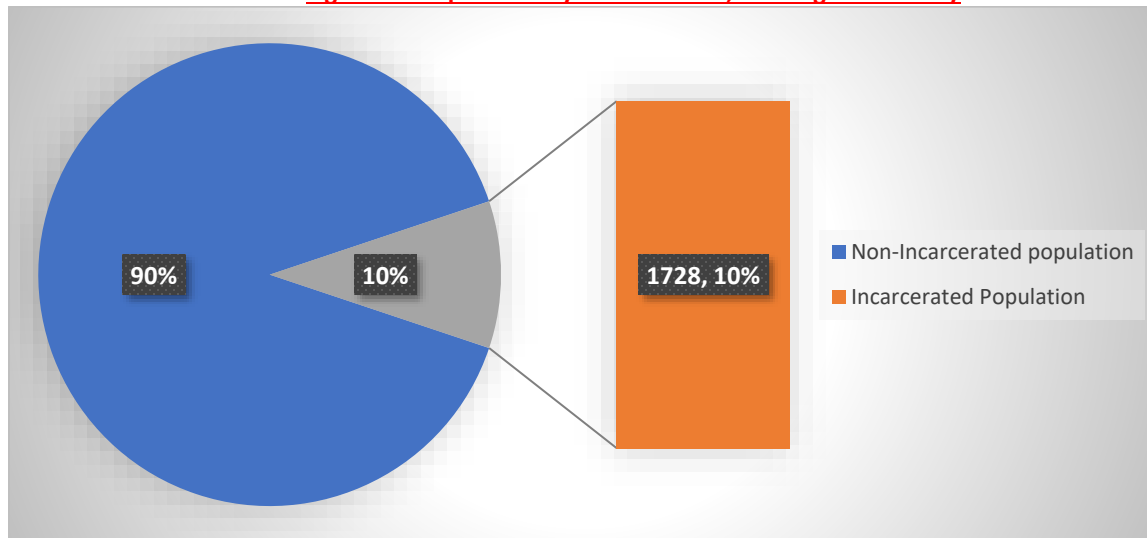
DRAFT Buckingham County Comprehensive Plan

Group Quarters Characteristics

According to the United States Census, roughly 3% of the United States population lives in group quarters. Group Quarters are determined by the Census as facilities such as college residential halls, residential treatment centers, skilled nursing facilities, group homes, military barracks, prisons, and worker dormitories. Buckingham County currently has two group quarter facilities - Buckingham Correctional Center and Dillwyn Correctional Center. The United States Census has determined that residents of these group facilities will be counted as residents of the Census Block of which the facility is located, not at the location of their previous residency.

As of December 2020, Buckingham Correctional Center had approximately 1,103 inmates and Dillwyn Correctional Center had approximately 758 inmates for a total of 1,728 prisoners with the County. This makes up approximately 10.3% of the total population of Buckingham County. The United States Census has noted that due to the 2020 pandemic, there were instances where inmates were released early or in some rare cases prisons selected to not complete the Census.

Figure 8 – Population by Incarceration, Buckingham County



Source: 2020 US Census Data, Virginia Department of Corrections

C. Education

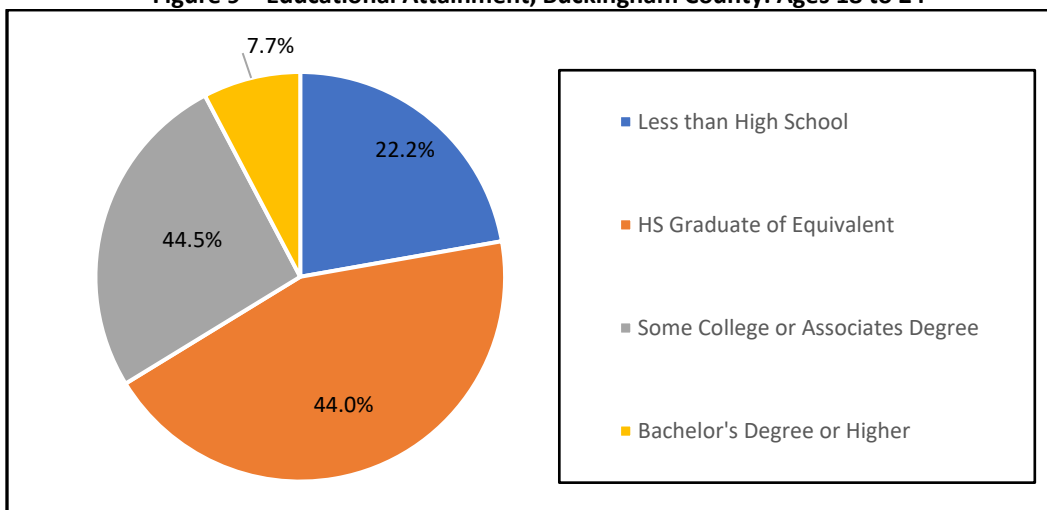
Multiple schools have served the County through the years. Today, Buckingham County is served by six (6) public schools. Buckingham Preschool serves pre-school early education students. Buckingham County Primary School serves students in Grades Kindergarten through third grade. Buckingham County Elementary School serve students in Grades 3 through 5. Buckingham Middle School serves Grades 6 through 8. Buckingham County High School serves Grades 9 through 12. Buckingham County also has a Career and Technical Center (CTC). The CTC allows Buckingham County High School Students to learn specific career skills that give them the experience needed before starting their chosen career. This program allows students to a hands-on learning experience by introducing students to skills such as automobile mechanics, culinary arts, cosmetology, nursing, agriculture, and welding that can assist students with deciding on a perspective career path.

DRAFT Buckingham County Comprehensive Plan

According to the Virginia Department of Education (VDOE) report for the 2021-2022 school year, Buckingham County had a total of 81 homeschooled students within the county. Within the 81 students that are homeschooled 42 are in grades K to 5, 18 are in grades 6 to 8, 21 are in grades 9 to 12. Buckingham County also has 65 religious exempt students. Within those 65 students, 31 are in grades K to 5, 18 are in grades 6 to 8, 16 are in grades 9 to 12. In the State of Virginia, to be eligible to be homeschooled, the parent of the home instructed student is required to submit a notice of intent document or a letter to the school district every year by August 15th. This includes a list of every child within the household that is being homeschooled, a program of study for the school year, and providing evidence of meeting the criteria by passing a standardized test from the previous school year (if applicable).

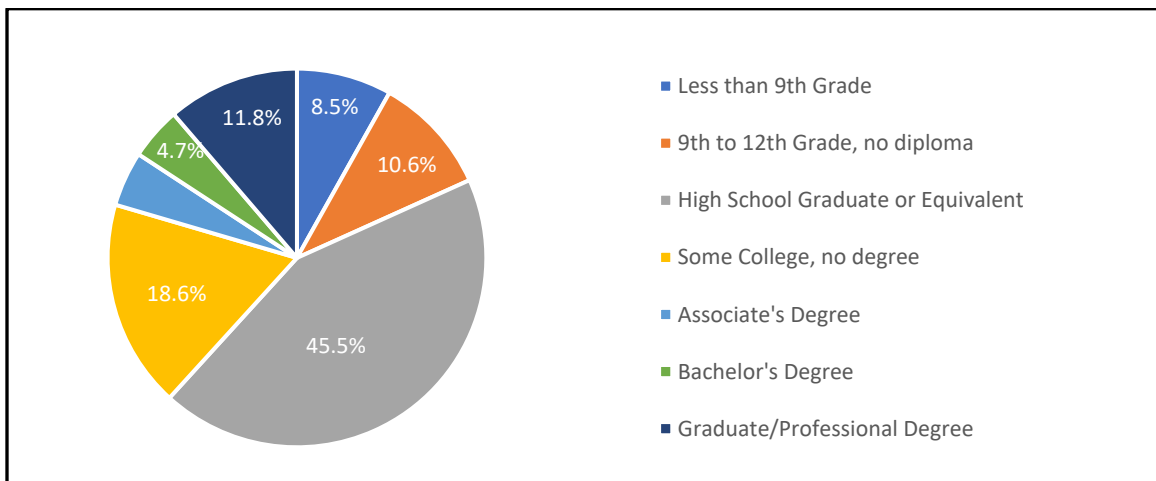
Educational Attainment for Buckingham County residents is shown in figures 9 and 10. These numbers are based on data from the 2021 U.S. Census ACS Estimates.

Figure 9 – Educational Attainment, Buckingham County: Ages 18 to 24



Source: American Community Survey 2021 five-year estimates

Figure 10 – Educational Attainment, Buckingham County: Ages 25 and Older



Source: American Community Survey 2021 five-year estimates

DRAFT Buckingham County Comprehensive Plan

The Virginia Board of Education has revised its accreditation standards to provide a more comprehensive view of school quality, starting with the 2022-2023 school year. Under the previous standards, a school's accreditation status was based on student achievement on Standards of Learning tests in English, Mathematics, History/Social Science and Science. The revised standards go beyond the tests and measure performance on multiple school-quality indicators. Under the revised standards, schools are evaluated on the following indicators:

Elementary and Middle Schools

- Overall proficiency and growth in English reading/writing achievement (including progress of English learners toward English-language proficiency).
- Overall proficiency and growth in mathematics.
- Overall proficiency in science.
- English achievement gaps among student groups.
- Mathematics achievement gaps among student groups.
- Absenteeism.

High Schools

- Overall proficiency in English reading/writing and progress of English learners toward English-language proficiency.
- Overall proficiency in mathematics.
- Overall proficiency in science.
- English achievement gaps among student groups.
- Mathematics achievement gaps among student groups.
- Graduation and completion.
- Dropout rate.
- Absenteeism.
- College, career and civic readiness (starting with the 2022-2023 school year).

Performance on each school-quality indicator is rated at one of three levels: Level 1 – meets or exceeds standard or sufficient improvement; Level 2 – near standard or making sufficient improvement; Level 3 – below standard.

Under the new system, schools earn one of the following accreditation ratings:

DRAFT Buckingham County Comprehensive Plan

- Accredited – Schools with all school-quality indicators at either Level 1 or 2.
- Accredited with Conditions – Schools with one or more school quality indicators at Level 3.
- Accreditation Denied – Schools that fail to adopt or fully implement required corrective actions to address Level 3 school quality indicators. A school rated as Accreditation Denied may regain state accreditation by demonstrating to the Board of Education that it is fully implementing all required corrective action plans.

The revised Standards of Accreditation prescribes that all schools and divisions, after conducting a comprehensive needs assessment, develop a multiyear plan that will be reviewed annually. The plan should include actions for all performance levels to support continuous improvement for all schools on each school-quality indicator.

Figure 11 – Buckingham County Public Schools Accreditation Status, 2022-2023

School	AA English	AG English	AA Math	AG Math	AA Science	Chronic Absent.	Grad & Compl Index	Dropout Rate	Overall Status
Buckingham County Elementary	L1	L1	L1	L2	L3	L1	NA	NA	Accredited with Conditions
Buckingham County Primary	L1	L1	L1	L2	L3	L2	NA	NA	Accredited with Conditions
Buckingham County Middle School	L3	L3	L1	L1	L1	L2	NA	NA	Accredited with Conditions
Buckingham County High School	L1	L2	L1	L1	L1	L2	L1	L1	Accredited

Source: Virginia Department of Education, 2022-2023 School Year

Level 1 – meets or exceeds standard or sufficient improvement

Level 2 – near standard or making sufficient improvement

Level 3 – below standard

AA – Academic Achievement

AG – Achievement Gap

Chronic Absent. – Chronic Absenteeism

Grad & Compl Index – Graduation and Completion Index

DRAFT Buckingham County Comprehensive Plan

D. Income

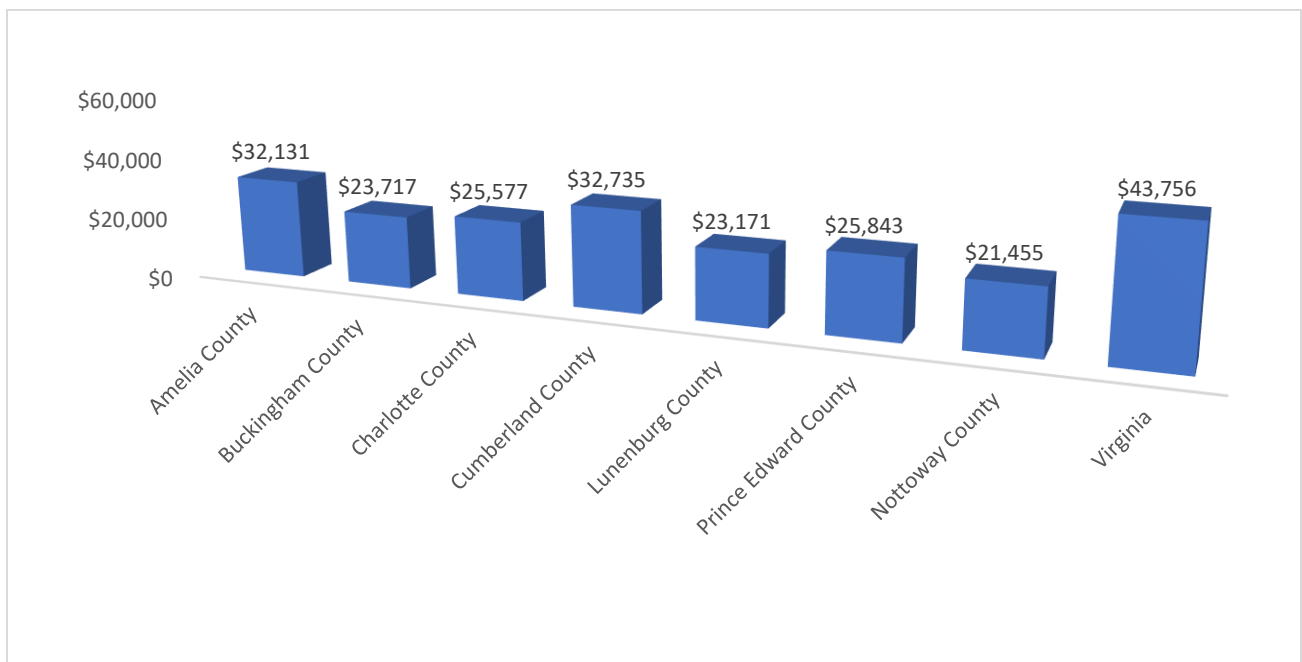
Introduction

The income section of the Buckingham County Comprehensive Plan includes an analysis of the income characteristics of the County. Income analysis often concentrates on increases or decreases in the income levels of area residents. The following section on income attempts to review the most current information available to analyze differences between the County, State, and Nation as a whole.

Per Capita Income

The per capita personal income of local residents is an indicator of the living standard of a locality's citizens and the strength of its economy. The per capita personal income is the average annual income of each person residing in the locality. Income includes such sources as wages, dividends, pensions, social security benefits and public assistance. As seen in Figure 12, Per capita income for Buckingham County is comparable with some of the surrounding counties but compares unfavorably with others. This data is from the 2021 U.S. Census ACS Five-Year Estimates.

Figure 12 – 2020 Per Capita Income



Source: American Community Survey 2021 five-year estimates

Poverty/Low-to-Moderate income

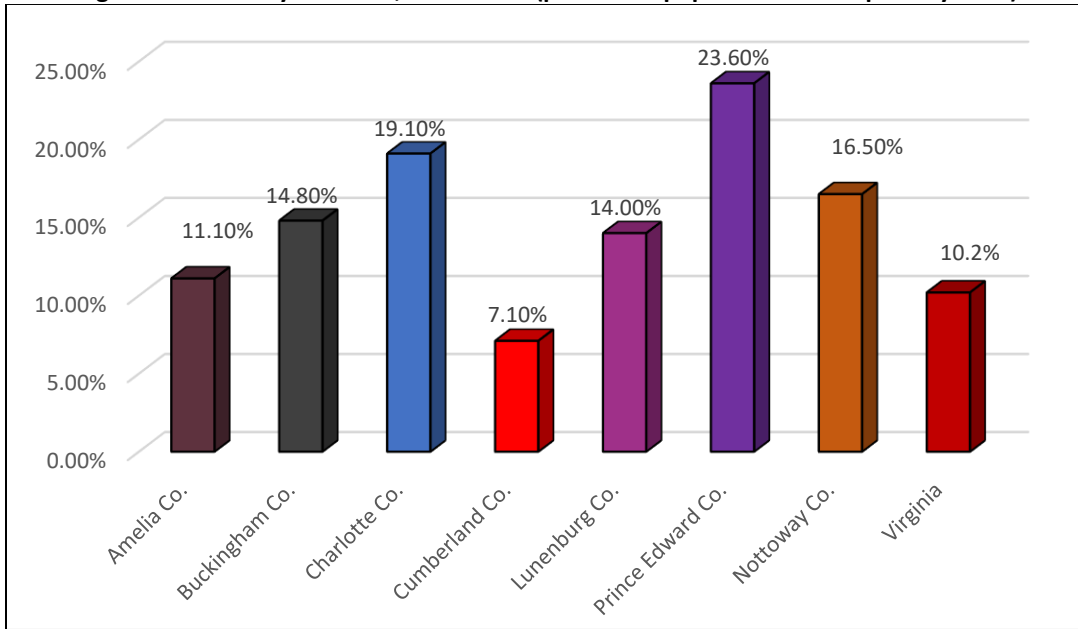
Poverty information is shown in Figures 13 and 14. The numbers are based on the 2021 U.S. Census American Community Survey (ACS) five-year estimates. As can be seen from those numbers, poverty rates for individuals and families in Buckingham County are higher than a number of surrounding counties.

Low-to-Moderate Income (LMI) information is provided by the U.S. Department of Housing and Community Development (HUD). Individuals or households whose household income is equal to or less than the Section 8 lower income limited established by HUD are determined to be LMI. The most recent

DRAFT Buckingham County Comprehensive Plan

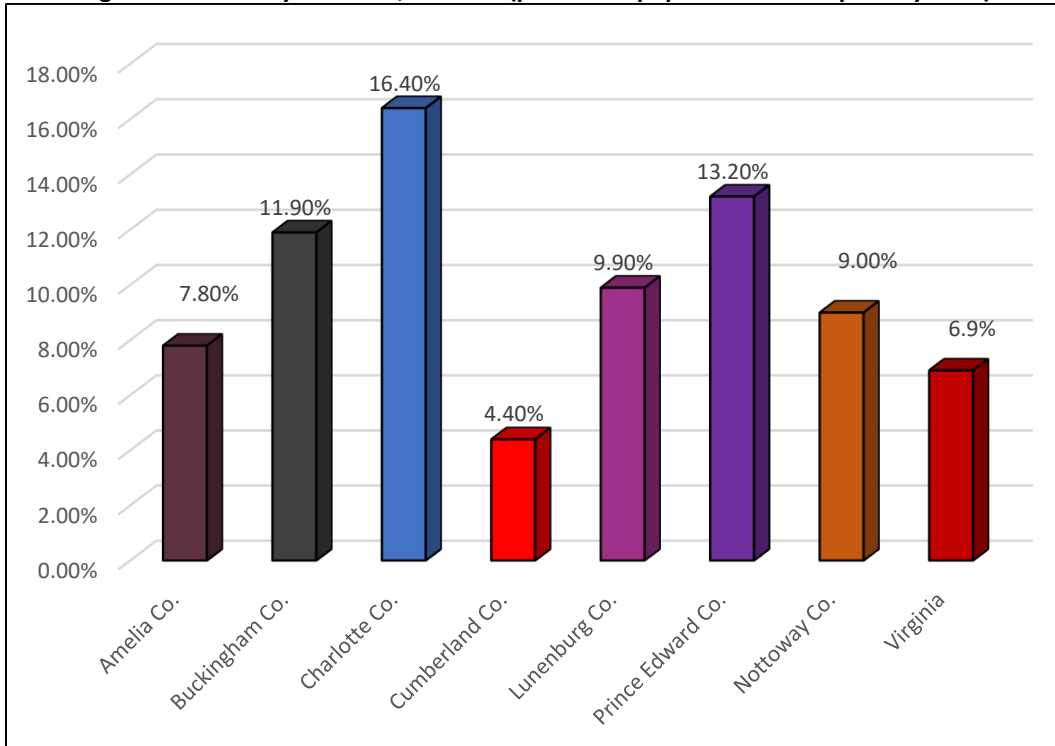
data available from HUD is based on 2011-2015 ACS five-year estimates. Based on that data, 37.83 percent of Buckingham County's residents are classified as LMI.

Figure 13 – Poverty Statistics, Individuals (percent of population below poverty level)



Source: American Community Survey 2021 five-year estimates

Figure 14 – Poverty Statistics, Families (percent of population below poverty level)



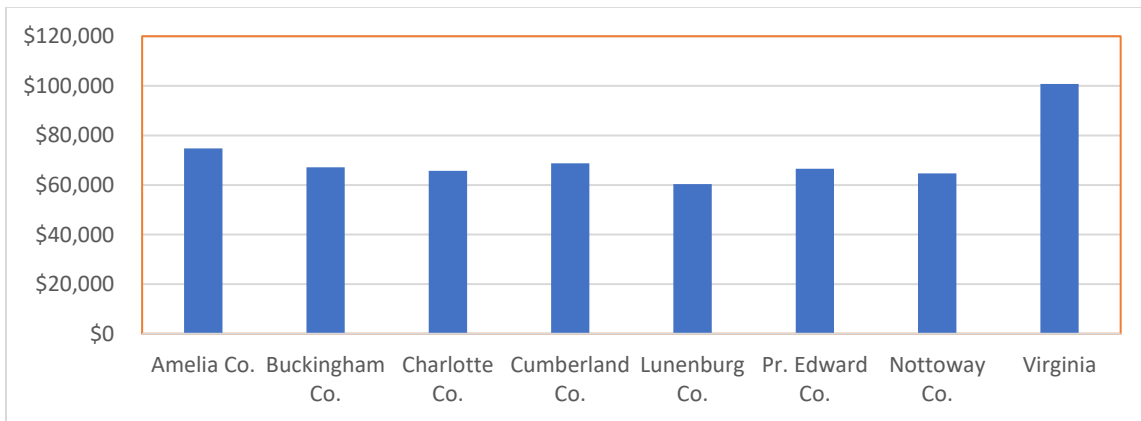
Source: American Community Survey 2021 five-year estimates

DRAFT Buckingham County Comprehensive Plan

Median Family Income/Median Household Income

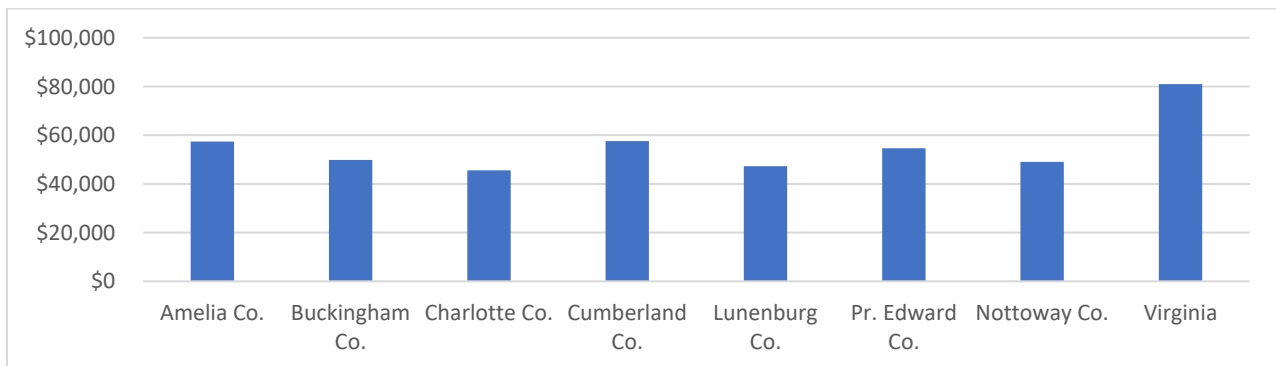
A family household is defined as any two or more persons related by birth, marriage, or adoption and living together. For Buckingham County, the estimated median family income per the 2021 ACS was \$67,114 (see Figure 15). This was lower compared to surrounding counties and the State of Virginia, which had an estimated median family income is \$100,763 for the same time. A household includes all persons who occupy a housing unit. For Buckingham County households, the estimated median household income per the 2021 ACS was \$49,841 (see Figure 16). This was also lower than the surrounding counties and the state, which had an estimated median household income of \$80,963 for the same time.

Figure 15 – Median Family Income



Source: American Community Survey 2021 five-year estimates

Figure 16 – Median Household Income



Source: American Community Survey 2021 five-year estimates

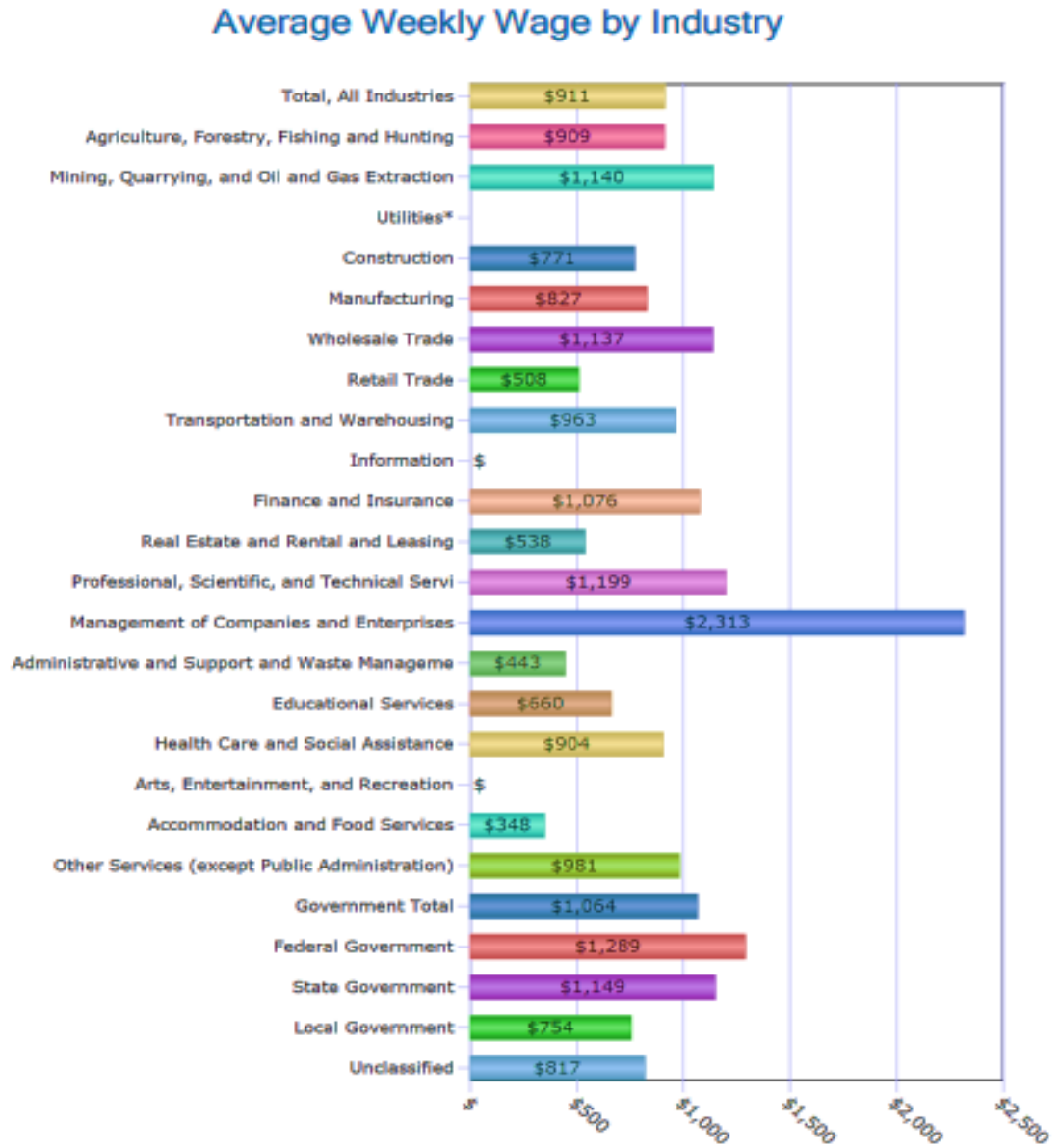
Wages

Figure 17 shows the average weekly wage by industry for workers in Buckingham County during the first quarter of 2023. These figures, derived by the Virginia Employment Commission (VEC) – Labor Market Information, are from reports by local establishments on both their total monthly employment and their total quarterly gross wages. This is required for unemployment insurance taxes. The average weekly wage is found by dividing quarterly gross wages for the industry by the average employment for the

DRAFT Buckingham County Comprehensive Plan

quarter for the industry and then dividing by thirteen weeks. If a sector is identified by an asterisk (*) in the chart, that means VEC considers the data to be non-disclosable.

Figure 17 – Average Weekly Wage by Industry, Buckingham County
First Quarter (January - March), 2023



Note: Asterisk (*) indicates non-disclosable data.

Source: Virginia Employment Commission, Economic Information & Analytics, Quarterly Census of Employment and Wages (QCEW), 1st Quarter (January, February, March) 2023.

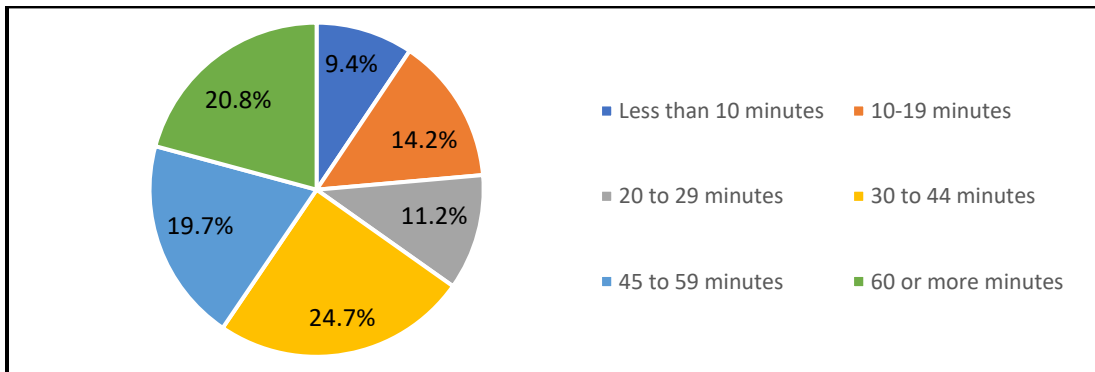
Source: Virginia Employment Commission

DRAFT Buckingham County Comprehensive Plan

E. Commuting Patterns

Commuting patterns measure the daily travel between places of residence and places of work. According to the Virginia Employment Commission’s Community Profile for Buckingham County, last updated in April 2022, Buckingham County has significantly more out-commuters (3,744) than in-commuters (1,624). The data also shows that 1,197 people live and work in the County. According to the 2021 ACS five-year estimates, the average commute to work for a worker in Buckingham County was 39.3 minutes. The data also shows that just under 35 percent of workers commute less than 30 minutes to work. The breakdown is as follows:

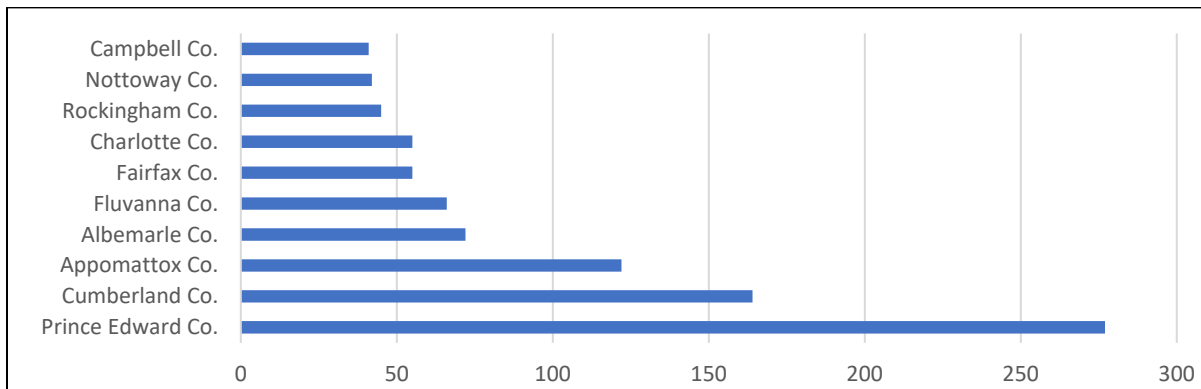
Figure 18 – Travel Times to Work, Buckingham County Workers Ages 16 and Older



Source: American Community Survey 2021 five-year estimates

According to data from the Virginia Employment Commission’s Community Profile for Buckingham County, the top 10 destinations for out-commuters include some surrounding counties - Albemarle, Prince Edward, and Fluvanna – plus some nearby cities as well including Charlottesville, Richmond, and Lynchburg. The Community profile data also shows that the top 10 localities from which workers commute to Buckingham County include some surrounding counties – Prince Edward, Cumberland, Appomattox, Albemarle and Fluvanna– plus others a little further away including Fairfax County and Rockingham County. See Figure 20.

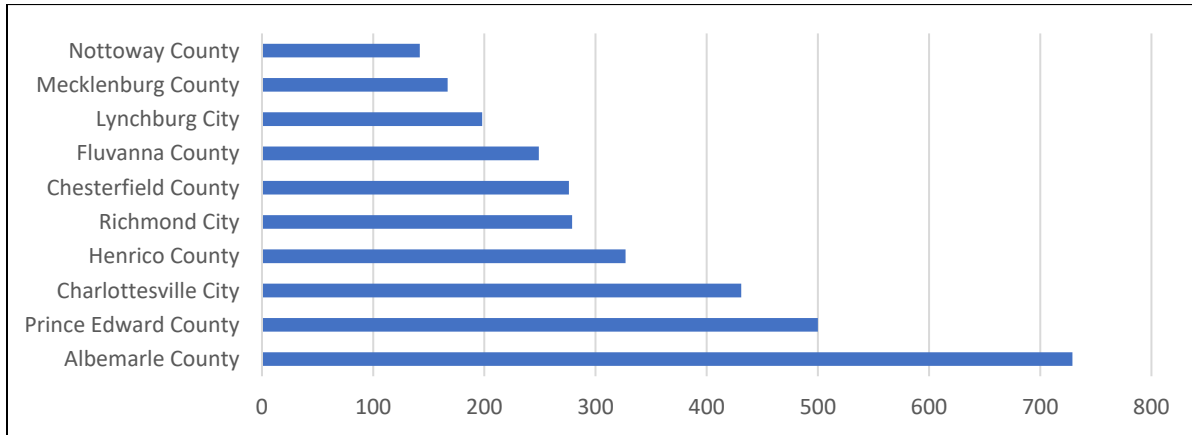
Figure 19 – Top 10 places workers are commuting from to work in Buckingham County



Source: Virginia Employment Commission

DRAFT Buckingham County Comprehensive Plan

Figure 20 – Top 10 places workers in Buckingham County are commuting to



Source: Virginia Employment Commission

F. Employment/Unemployment

Occupations

The Virginia Employment Commission, in its Community Profile for Buckingham County (last updated in April 2022), identified 20 occupations that are poised for growth and 20 that are expected to decline for the South-Central Workforce Investment Area (Region 8 – which covers Amelia, Brunswick, Buckingham, Charlotte, Cumberland, Halifax, Lunenburg, Mecklenburg, Nottoway, and Prince Edward Counties). Those occupations are identified in Figures 21 and 22. If a sector is denoted with three asterisks (***) , that means VEC considers the data to be non-disclosable. Growth occupations include the Healthcare Support Occupation, healthcare support, personal care and service, and Hhhealthcare practitioners and technical, community and social service, and Construction and Extraction Occupation-computer and mathematical occupations. Declining industries include production jobs, postal service workers, cooks and fast-food workers, and administrative jobs.

The Virginia Employment Commission has changed the classifications of many of the growth occupations since the previous 2010 – 2020 Occupational Employment Statistics Survey data provided in the Buckingham County’s 2015 Comprehensive Plan. These classifications have been consolidation into a broader classification group. For the growth occupations, the previous classification of Personal Care Aides, Home Health Aides, Dental Assistants, Medical Assistants are now consolidated into the Healthcare Support Occupation classification. The new classification of Healthcare Practitioners and Technical were previously classified in separate categories of Physical Therapists, Physicians and Surgeons, Emergency Medical Technicians and Paramedics, Pharmacy Technicians, and Radiologic Technologists. Rehabilitation Counselors and Mental Health Counselors are now classified as Community and Social Service. The classification group Construction and Extraction were previously classified as Brickmason and Blockmasons, Helpers – Carpenters, and Industrial Machinery Mechanics. The new classification of Office and Administration Support was previously known as Medical Secretary, Receptionists and Information Clerks, and Billing and Posting Clerks. The Installation, Maintenance, and Repair classification was previously known as First – Line Supervisors of Helpers, Laborers, and Material Movers; and Heating, Air Conditioning, and Refrigeration Mechanics/Installers. The previous classification of Coaches and Scouts is classified now as Arts, Design, Entertainment, and Sports. While the Virginia Employment Commission kept the declining occupation classifications relatively the same.

DRAFT Buckingham County Comprehensive Plan

Figure 21 – Growth Occupations, South Central Workforce Investment Area (Amelia, Brunswick, Buckingham, Charlotte, Cumberland, Halifax, Lunenburg, Mecklenburg, Nottoway, and Prince Edward Counties)

Occupation Type	Employment			Openings		
	Estimated 2014	Projected 2024	Change	Replacements	Growth	Total
Healthcare Support Occupations	1,976	2,528	27.94%	45	55	100
Personal Care and Service Occupations	2,533	3,168	25.07%	36	64	100
Healthcare Practitioners and Technical Occupations	3,457	4,116	19.06%	76	66	142
Community and Social Service Occupations	1,020	1,165	14.22%	22	14	36
Computer and Mathematical Occupations	418	469	12.2%	6	6	12
Legal Occupations	231	261	12.99%	4	3	7
Life, Physical, and Social Science Occupations	284	316	11.27%	8	4	12
Business and Financial Operations Occupations	1,256	1,392	10.83%	27	14	41
Education, Training, and Library Occupations	4,786	5,284	10.41%	104	50	154
Building and Grounds Cleaning and Maintenance Occupations	2,198	2,391	8.78%	44	19	63
Farming, Fishing, and Forestry Occupations	848	920	8.49%	20	8	28
Construction and Extraction Occupations	2,747	2,967	8.01%	46	22	68
Management Occupations	1,532	1,642	7.18%	36	12	48
Installation, Maintenance, and Repair Occupations	2,467	2,632	6.69%	58	18	76
Food Preparation and Serving Related Occupations	4,286	4,563	6.46%	145	33	178
Protective Service Occupations	2,402	2,527	5.2%	65	14	79
Transportation and Material Moving Occupations	4,660	4,900	5.15%	102	24	126
Office and Administrative Support Occupations	8,045	8,334	3.59%	169	47	216
Sales and Related Occupations	5,211	5,372	3.09%	176	17	193
Arts, Design, Entertainment, Sports, and Media Occupations	529	533	0.76%	14	2	16

Source: Virginia Employment Commission, Economic Information & Analytics, Long Term Industry and Occupational Projections, 2014-2024.

DRAFT Buckingham County Comprehensive Plan

Figure 22 – Declining Occupations, South Central Workforce Investment Area (Amelia, Brunswick, Buckingham, Charlotte, Cumberland, Halifax, Lunenburg, Mecklenburg, Nottoway, and Prince Edward Counties)

Occupation Type	Employment			Openings		
	Estimated 2014	Projected 2024	Change	Replacements	Growth	Total
Textile Knitting and Weaving Machine Setters, Operators, and Tenders	***	***	***	***	***	***
Postal Service Mail Carriers	171	138	-19.3%	3	0	3
Cooks, Fast Food	261	218	-16.48%	7	0	7
Grinding and Polishing Workers, Hand	***	***	***	***	***	***
Helpers – Production Workers	239	212	-11.3%	8	0	8
Molders, Shapers, and Casters, Except Metal and Plastic	119	108	-9.24%	4	0	4
Coil Winders, Tapers, and Finishers	***	***	***	***	***	***
Cabinetmakers and Bench Carpenters	176	160	-9.09%	1	0	1
Sewing Machine Operators	***	***	***	***	***	***
Butchers and Meat Cutters	***	***	***	***	***	***
Tellers	245	230	-6.12%	10	0	10
Bookkeeping, Accounting, and Auditing Clerks	585	551	-5.81%	6	0	6
Shipping, Receiving, and Traffic Clerks	260	246	-5.38%	6	0	6
Inspectors, Testers, Sorters, Samplers, and Weighers	160	152	-5.0%	4	0	4
First-Line Supervisors of Production and Operating Workers	316	302	-4.43%	5	0	5
Executive Secretaries and Executive Administrative Assistants	137	132	-3.65%	1	0	1
Secretaries and Administrative Assistants, Except Legal, Medical, and Executive	795	769	-3.27%	8	0	8
Machinists	355	346	-2.54%	10	0	10
Cashiers	2,225	2,217	-0.36%	95	0	95
Customer Service Representatives	336	335	-0.3%	8	0	8

Source: Virginia Employment Commission, Economic Information & Analytics, Long Term Industry and Occupational Projections, 2014-2024.

Unemployment

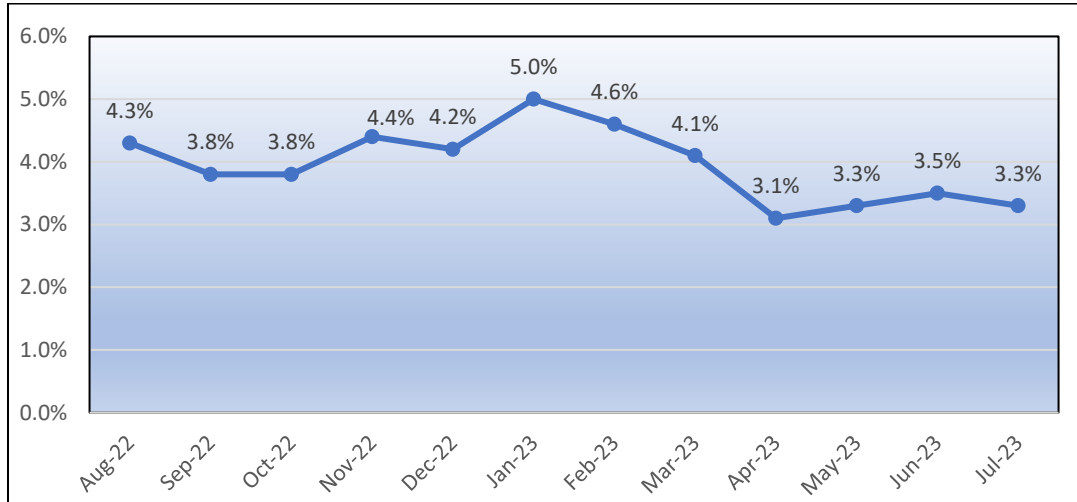
The Virginia Employment Commission (VEC) was the source for the unemployment statistics in this Comprehensive Plan (see Figures 23 and 24). The monthly unemployment figures for Buckingham County, run from August 2022 through July 2023. Annual unemployment figures for Buckingham County run from 2012 to 2022.

Buckingham County was not immune to the recession that resulted from the COVID-19 pandemic in 2020. The County has taken some time to recover, and unemployment rates – which have come down from a high of 7.6 percent early in the pandemic – are close to their pre-pandemic levels of 3.9%. On an annual

DRAFT Buckingham County Comprehensive Plan

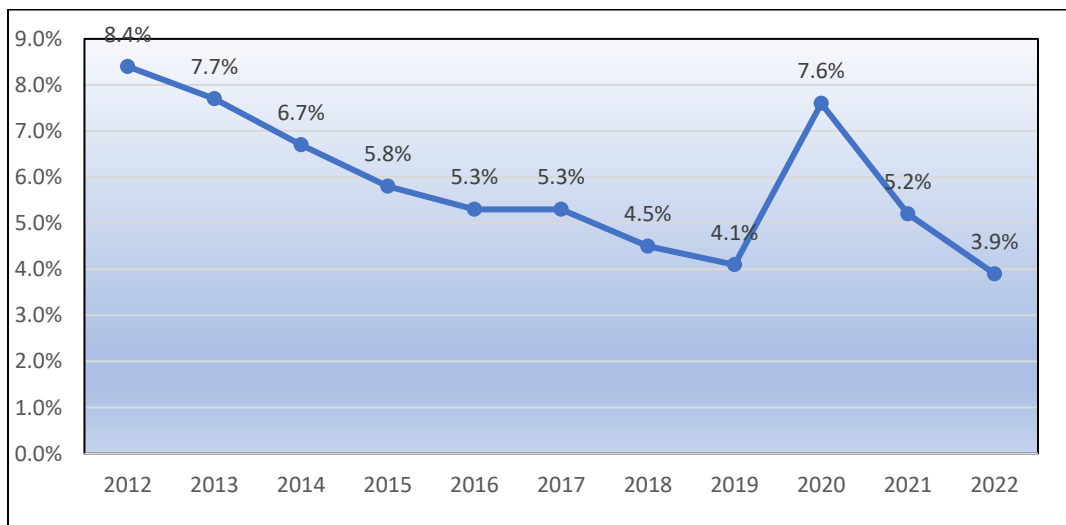
basis, the County's unemployment rate came steadily down from the levels seen during the Great Recession of 2008-2009, and continued a downward trend until the pandemic.

Figure 23 – Monthly Unemployment Rates, Buckingham County



Source: Virginia Employment Commission

Figure 24 – Annual Unemployment Rates, Buckingham County



Source: Virginia Employment Commission

G. Economic Activity

Local Industry

According to data from the [American Community Survey \(last updated for 2021\)](#) [Virginia Employment Commission \(Community Profile for Buckingham County, last updated in April 2023\)](#), the top employment sectors in the County are construction; educational service, health care, and social assistance; and retail trade. Other prominent job sectors are transportation, warehousing, and utilities; and Public Administration. See Figure 25

DRAFT Buckingham County Comprehensive Plan

Figure 25 – Employment by Industry, Buckingham County

<u>Industry</u>	<u>2008 – 2012 ACS Estimate</u>	<u>2021 ACS Estimate</u>
<u>Agriculture, Forestry, Fishing, Hunting, & Mining</u>	<u>190</u>	<u>355</u>
<u>Construction</u>	<u>454</u>	<u>926</u>
<u>Manufacturing</u>	<u>138</u>	<u>316</u>
<u>Wholesale Trade</u>	<u>161</u>	<u>180</u>
<u>Retail Trade</u>	<u>689</u>	<u>800</u>
<u>Transportation, Warehousing, & Utilities</u>	<u>271</u>	<u>624</u>
<u>Information</u>	<u>49</u>	<u>28</u>
<u>Finance and Insurance, and real estate and rental and leasing</u>	<u>328</u>	<u>256</u>
<u>Professional, scientific, and management, administrative and waste management services</u>	<u>430</u>	<u>522</u>
<u>Educational Services, Health Care and Social Assistance</u>	<u>1,384</u>	<u>1,320</u>
<u>Arts, Entertainment, Recreation, Accommodation, & Food Services</u>	<u>228</u>	<u>296</u>
<u>Other services, except public administration</u>	<u>360</u>	<u>205</u>
<u>Public Administration</u>	<u>584</u>	<u>611</u>
<u>Total Employment</u>	<u>5,293</u>	<u>6,412</u>

Source: 2008 – 2012 American Community Survey (ACS) 5-Year Estimates, 2021 ACS 5-year Estimates

Major Employers

Buckingham County’s top 50 employers as of the First Quarter of 2023 are shown in Figure 26. The source of this listing is the Virginia Employment Commission, Economic Information & Analytics, Quarterly Census of Employment and Wages (QCEW), 1st Quarter (January, February, and March) 2023.

DRAFT Buckingham County Comprehensive Plan

Figure 26 – Top 50 Employers, Buckingham County

Employer	Type
Buckingham County School Board	Local Government
Buckingham Correctional Facility	Government
Dillwyn Correctional Facility	Government
County of Buckingham	Local Government
Central VA Health Service Inc.	Private
Kyanite Mining Corporation	Private
Food Lion	Private
Heritage Hall	Private
VDOT	State Government
HI Test Laboratories	Private
McDonalds	Private
The Rock Kamps, LLC	Private
Dominion Virginia Power	Private
Helm HR, LLC	Private
Boxley Quarries	Private
Central Virginia Christian School	Private
Postal Services	Federal Government
Price Fibers Inc.	Private
The Rock Kamps Logistics, LLC	Private
Crossroads Services Board	Non-profit
Midkiff Timber LLC	Private
Southern Building Service Inc	Private
Rock Wood Products of Dillwyn	Private
Tiger Fuel Company	Private
Virginia Department of Conservation	State Government
Division of Institutions	Government
Walter E. Saxon Jr., DDS.	Private
Anderson Tire Company	Private
Commonwealth Academy of Professional Education	Private
Dillwyn Dairy Freeze LC	Private
DolgenCorp LLC	Private
Shore Stop Store	Private
Little Creek Farm & Lumber LLC	Private
Pearson Construction	Private
Nukumers Logistics LLC	Private
Reid Super-Save Market	Private
South Central Counseling Group	Private
Advance Auto Parts	Private
Central Virginia Exterminating	Private
Seay & Haver Oil Company Inc	Private
State Farm Mutual Automobile Insurance	Private

DRAFT Buckingham County Comprehensive Plan

James River Slate Company, Inc.	Private
Mary's Rest Home for Adult Living	Private
Pinos Italian Restaurant	Private
Seay Milling Company	Private
Slate River Vet Clinic	Private
W D Hackett Logging Inc	Private
DNA Logging LLC	Private
Hill Brothers Construction, LLC	Private
Lighthouse Truck & Auto LLC	Private

Source: Virginia Employment Commission, Buckingham County

Commuter Data for Planning Commission Review

Top 10 Buckingham County Commuter In-flow

Residence		Workplace		Commuting Flow		
State Name	County Name	State Name	County Name	Workers in Commuting Flow	Margin of Error (MOE)	MOE %
Virginia	Buckingham County	Virginia	Buckingham County	2,295	371	16%
Virginia	Fluvanna County	Virginia	Buckingham County	269	234	87%
Virginia	Appomattox County	Virginia	Buckingham County	197	89	45%
Virginia	Prince Edward County	Virginia	Buckingham County	193	91	47%
Virginia	Albemarle County	Virginia	Buckingham County	72	49	68%
Virginia	Charlotte County	Virginia	Buckingham County	66	51	77%
Virginia	Amherst County	Virginia	Buckingham County	53	90	170%
Virginia	Cumberland County	Virginia	Buckingham County	51	50	98%
Virginia	Halifax County	Virginia	Buckingham County	44	48	109%
Virginia	Goochland County	Virginia	Buckingham County	27	34	126%
Virginia	Lynchburg city	Virginia	Buckingham County	26	41	158%
Total				3,293		

Source: U.S. Census 2016-2020 5 year American Community Survey

** Please note: The U.S. Census American Community Survey estimates are period based estimates that describe the average characteristics of the population over the period of data collection. The ACS 2016 - 2020 ACS 5 year period is from January 1, 2016 - December 31, 2020. The estimates are a result of the chosen sample and are subject to sample-sample variation. Sampling Error in data arises due to the use of probability sampling.

Top 10 Buckingham County Commuter Out-flow						
Residence		Workplace		Commuting Flow		
State Name	County Name	State Name	County Name	Workers out Commuting Flow	Margin of Error (MOE)	MOE %
Virginia	Buckingham County	Virginia	Buckingham County	2,295	371	16%
Virginia	Buckingham County	Virginia	Prince Edward County	894	171	19%
Virginia	Buckingham County	Virginia	Albemarle County	721	196	27%
Virginia	Buckingham County	Virginia	Charlottesville city	704	223	32%
Virginia	Buckingham County	Virginia	Fluvanna County	261	123	47%
Virginia	Buckingham County	Virginia	Cumberland County	258	149	58%
Virginia	Buckingham County	Virginia	Louisa County	231	105	45%
Virginia	Buckingham County	Virginia	Chesterfield County	165	110	67%
Virginia	Buckingham County	Virginia	Richmond city	156	97	62%
Virginia	Buckingham County	Virginia	Orange County	147	177	120%
Virginia	Buckingham County	Virginia	Henrico County	133	77	58%
Total				5,965		
Source: U.S. Census 2016-2020 American Community Survey						

** Please note: The U.S. Census American Community Survey estimates are period based estimates that describe the average characteristics of the population over the period of data collection. The ACS 2016 - 2020 ACS 5 year period is from January 1, 2016 - December 31, 2020. The estimates are a result of the chosen sample and are subject to sample-sample variation. Sampling Error in data arises due to the use of probability sampling.

Top 10 Buckingham County Commuter Out-flow				
Residence		Workplace		Commuting Flow
State Name	County Name	State Name	County Name	Workers out Commuting Flow
Virginia	Buckingham County	Virginia	Buckingham County	1,511
Virginia	Buckingham County	Virginia	Albemarle County	744
Virginia	Buckingham County	Virginia	Charlottesville city	483
Virginia	Buckingham County	Virginia	Prince Edward County	393
Virginia	Buckingham County	Virginia	Henrico County	303
Virginia	Buckingham County	Virginia	Chesterfield County	227
Virginia	Buckingham County	Virginia	Fluvanna County	219
Virginia	Buckingham County	Virginia	Richmond city	211
Virginia	Buckingham County	Virginia	Lynchburg City	181
Virginia	Buckingham County	Virginia	Cumberland County	84
Virginia	Buckingham County	Virginia	Farifax County	83
Total				4,439
Source: U.S. Census Longitudinal Employer-Households Dynamics (LEHD)				

*** Note: The Longitudinal Employer-Household Dynamics (LEHD) data at the U.S. Census Bureau is a quarterly database of linked employer-employee data covering over 95% of employment in the United States. The LEHD data are generated by merging previously collected survey and administrative data on jobs, businesses, and workers. By integrating administrative data with existing census and surveys, a national longitudinal jobs database for the U.S. is generated. This data is the result of a partnership between the Census Bureau and U.S. states, and they incorporate information from administrative sources including Unemployment Insurance (UI) earnings data and the Quarterly Census of Employment and Wages (QCEW).

Top 10 Buckingham County Commuter In-flow

Residence		Workplace		Commuting Flow
State Name	County Name	State Name	County Name	Workers in Commuting Flow
Virginia	Buckingham County	Virginia	Buckingham County	2,295
Virginia	Prince Edward County	Virginia	Buckingham County	277
Virginia	Cumberland County	Virginia	Buckingham County	217
Virginia	Appomattox County	Virginia	Buckingham County	132
Virginia	Albemarle County	Virginia	Buckingham County	84
Virginia	Charlotte County	Virginia	Buckingham County	80
Virginia	Fluvanna County	Virginia	Buckingham County	79
Virginia	Halifax County	Virginia	Buckingham County	41
Virginia	Chesterfield County	Virginia	Buckingham County	37
Virginia	Nottoway County	Virginia	Buckingham County	35
Virginia	Powhatan County	Virginia	Buckingham County	34
Total				3,311
Source: U.S. Census Longitudinal Employer-Households Dynamics (LEHD)				

*** Note: The Longitudinal Employer-Household Dynamics (LEHD) data at the U.S. Census Bureau is a quarterly database of linked employer-employee data covering over 95% of employment in the United States. The LEHD data are generated by merging previously collected survey and administrative data on jobs, businesses, and workers. By integrating administrative data with existing census and surveys, a national longitudinal jobs database for the U.S. is generated. This data is the result of a partnership between the Census Bureau and U.S. states, and they incorporate information from administrative sources including Unemployment Insurance (UI) earnings data and the Quarterly Census of Employment and Wages (QCEW).

DRAFT Buckingham County Comprehensive Plan, 2023 - 2028

Inventory and Analysis: Community Resources

A. Housing

Introduction

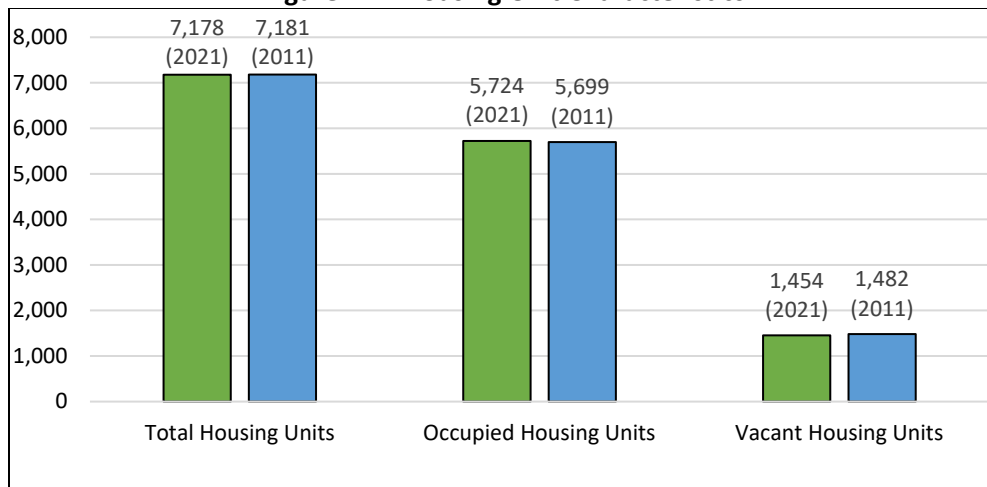
Attractive, safe, and affordable housing is a basic requirement of any community. Good quality housing aids in higher land valuation and better living conditions for the population. The availability of good quality housing can be an excellent enticement for facilitating the relocation of new industry or residents to the area. New industry can bring new workers into the community. Those workers would be more easily enticed by sufficient and appealing housing. This creates a more prosperous and desirable community in which to live, work and grow.

This section will examine housing in Buckingham County by type, quality, vacancy rate and household characteristics, such as household size and race. Furthermore, general trends and concerns relating to future housing needs will be discussed. Although the provision of housing is largely the responsibility of the private sector (which includes builders, developers, realtors, bankers and others), there has always been a close interdependence between the public and private sectors which is essential in meeting the needs of a community. This Plan will provide the basis for analysis of the current status of housing in the area as well as a broad base to aid in future growth decisions.

Housing Units

According to the U.S. Census Bureau, a housing unit is defined as a house, apartment, mobile home or trailer, group of rooms, or single room occupied as separate living quarters, or if vacant, intended for occupancy as separate living quarters. Separate living quarters are those in which the occupants live separately from any other individuals in the building and which have direct access from outside the building or through a common hall. For vacant units, the criteria of separateness and direct access are applied to the intended occupants whenever possible. Statistics for Buckingham County reflect a slight decrease in the number of housing units from 7,181 to 7,178 from 2011 to 2021; a decrease of 3 units. Occupied housing units increased from 5,699 units to 5,724 units from 2011 to 2021; an increase of 25 units. There was a decrease in vacant units from 1,482 units to 1,454 units from 2011 to 2021; a decrease of 28 units (see Figure 27).

Figure 27 – Housing Unit Characteristics

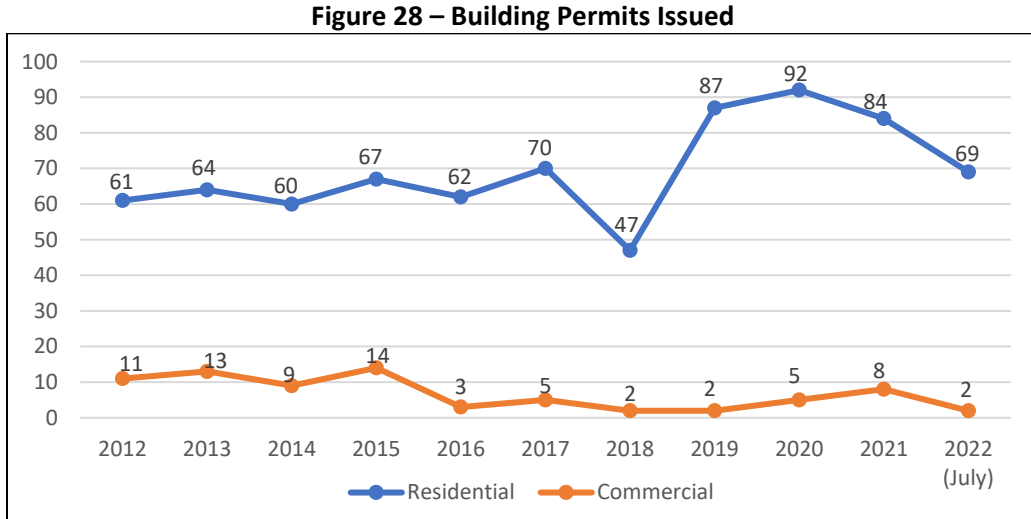


Source: U.S. Census Bureau, 2011 and 2021 American Community Survey

DRAFT Buckingham County Comprehensive Plan, 2023 - 2028

Housing Growth (Building Permits Issued)

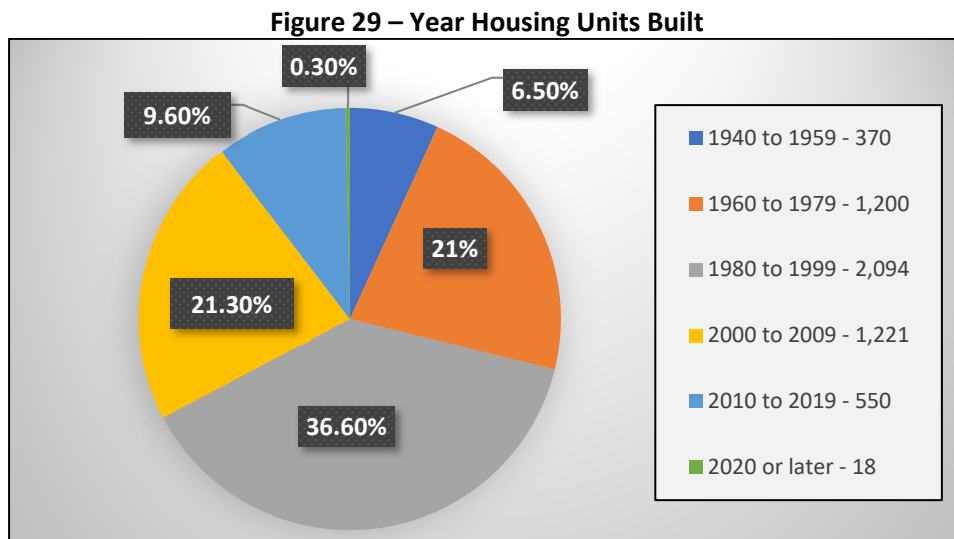
According to data provided by the Buckingham County Building Inspector’s Office, based on available records, the County issued a total of 837 building permits from 2012 to July 2022 (see Figure 28). Of those, 837 permits – 763 were residential and 74 were commercial. Building permits for the town of Dillwyn are handled by the County.



Source: Buckingham County Building Inspector’s Office

Housing Quality

Indicators of housing conditions selected for this analysis include rental characteristics, owner occupied housing values, and housing deficiency characteristics. According to the U.S. Census Bureau’s American Community Survey 2021 5-year estimates, of the 5,724 occupied housing units in the County, 4,240 were owner occupied and 1,484 were renter occupied. The data also shows that 4.7% of the total housing units in the County were built before 1939, 21% were built between 1960 and 1979, and 36.6% were built between 1980 and 1999 (see Figure 29).



Source: U.S. Census Bureau 2021 American Community Survey Estimates

DRAFT Buckingham County Comprehensive Plan, 2023 - 2028

Indoor Plumbing Accessibility

In rural communities like Buckingham County, indoor plumbing was not easily assessable and was considered a luxury due to high costs until the 1940s. Although to United States' standards of today the accessibility to indoor plumbing is a normalized commodity for most households, there are still homes within many communities that do not have indoor plumbing. According to the 2021 American Community Survey 5-Year Estimates, Buckingham County has seen a decrease in the number of housing units that are lacking indoor plumbing by 92 housing units since 2011 (see Figure 30).

Figure 30: Housing Units Lacking Indoor Plumbing

Year	Number of Housing Units	Percentage of Housing Units
2000	161	2.6%
2011	103	1.8%
2021	11	0.2%

Source: U.S. Census Bureau American Community Survey Five Year Estimates – 2021, 2011; US Census Bureau 2000

Buckingham County Governmental Policies

The Buckingham County Zoning Ordinance contains intents and purposes, permitted uses by right and by special exception, as well as rules and regulations for the various zoning districts found in Buckingham County. The Ordinances also lay out how they will be enforced, including penalties for violations, and the process for appeals for variances or appeals of decisions that are thought to be in error.

Building inspections for Buckingham County and the Town of Dillwyn are handled through the Buckingham County Building Inspector's Office. The County follows the 2018 Virginia Uniform Statewide Building Code, which sets standards for the construction, alteration, adoption, repair, removal, use, location, occupancy and maintenance of all buildings. This code standardizes the requirements for and quality of construction of all housing regardless of the type or ultimate price.

Per the Virginia Department of Taxation, for tax year 2023, the real estate tax rate in Buckingham County was \$0.55 per \$100.00 of assessed value.

B. Community Facilities and Services

Introduction

Community facilities and services are made possible by individuals, families, businesses and industries working together to serve Buckingham County. The provision of such facilities and services is usually determined by the tax income that can be obtained from local population and businesses.

The following inventory analysis summarizes the public resources for which the County has primary responsibility and control. However, it also considers other important resources and activities of other levels of government such as federal and state agencies. In addition, some private or quasi-public facilities such as educational institutions and some utility systems are important resources for the local community and must be taken into account when analyzing the full range of public resources available to the citizens of this locality.

DRAFT Buckingham County Comprehensive Plan, 2023 - 2028

Administrative Facilities

The Buckingham County Administration Office is located in Buckingham Court House on West James Anderson Highway (U.S. 60). This office serves as the center for government business in the County. The County Administrator, who reports to the Board of Supervisors, oversees the daily business for the County.

Education Facilities

- Buckingham PreSchool: Public Early Childhood Education program that serves preschool age children and is located at 77 Buckingham PreSchool Road, Buckingham, VA 23921
- Buckingham County Primary School: Public school that serves students in Grades K through 2 and is located at 128 Frank Harris Road, Dillwyn, VA 23936
- Buckingham County Elementary School: Public school that serves students in Grades 3 through 5 and is located at 40 Frank Harris Road Dillwyn, VA 23936
- Buckingham County Middle School: Public school that serves students in Grades 6 through 8 and is located at 1184 High School Road Buckingham, VA 23921
- Buckingham County High School: Public school that serves students in Grades 9 through 12 and is located at 78 Knights Road Buckingham, VA 23921
- Buckingham County Career and Technical Education Center: Public school that provides career and technical education instruction for high school students in Grades 9 through 12 and is located at 98 Fanny White Road, Buckingham, VA 23921

Institutions of Higher Education

There are several institutions of higher education that are within commuting distance (1-hour or less) for residents of Buckingham County. Located in adjoining Prince Edward County are Longwood University and Hampden-Sydney College. In relation to the northern area of the County, in Albemarle County is the City of Charlottesville. Located in the heart of the City of Charlottesville is the University of Virginia. Also located in Albemarle County is Piedmont Virginia Community College (PVCC). In relation to the southern area of the County, a resident could also have an easy commute to Charlotte County where the John H. Danial (Keysville) campus of Southside Virginia Community College (SVCC) is located. In relation to the western area of the County, a resident could also have an easy commute to the City of Lynchburg where Central Virginia Community College (CVCC) is located. In relation to the eastern area of the County, a resident could also have an easy commute to Chesterfield County where John Tyler Community College (JTCC) is located.

Industrial Sites

Buckingham County has one industrial park (see Map 20) and is served by one regional park. The industrial park in Buckingham County is located near Dillwyn. The regional industrial park is located in Keysville, in Charlotte County.

- Buckingham County Industrial Park

DRAFT Buckingham County Comprehensive Plan, 2023 - 2028

The Buckingham County Industrial Park has approximately 160 acres zoned for NC1 Neighborhood Commercial. Rail transport is available nearby through the Buckingham Branch Railroad. The park is located just outside the Dillwyn Town Limits.

- The Heartland Regional Industrial Park

The Heartland Regional Industrial Park contains approximately 400 acres zoned for general industrial use and is owned by the Counties of Charlotte, Lunenburg, Prince Edward, Cumberland, Buckingham, and Amelia. The Heartland Park is currently home to Eastern Engineered Wood Products and logging equipment retailer Forest Pro, as well as the office for the Commonwealth Regional Council. The property is located in Virginia's Tobacco Region and is also in an Enterprise Zone and a designated Opportunity Zone, which provides additional incentives for development. The park offers tenants convenient access to a four-lane arterial highway and Buckingham Branch's short-line rail and transload site on the northern border of the park as well as water and wastewater services provided by the Town of Keysville and T1 Broadband interconnectivity with redundancy.

Map 20 – Industrial Site – Buckingham County Industrial Park



Map created by CRC – October 2023

Source: ESRI, Buckingham County

DRAFT Buckingham County Comprehensive Plan, 2023 - 2028

Health Care

As shown below, Buckingham County residents are in close proximity to the following hospitals (60 miles from the County line):

- Centra Southside Community Hospital (Farmville, Virginia)
- Sentara Martha Jefferson Hospital (Charlottesville, Virginia)
- University of Virginia Medical Center (Charlottesville, Virginia)
- Centra Lynchburg General Hospital (Lynchburg, Virginia)
- Centra Virginia Baptist Hospital (Lynchburg, Virginia)
- Augusta Health (Fishersville, Virginia)
- Bon Secours-St. Francis Medical Center (Midlothian, Virginia)
- Carillion Stonewall Jackson Hospital (Lexington, Virginia)
- Johnston Willis Hospital (Richmond, Virginia)
- Centra Bedford Memorial Hospital (Bedford, Virginia)
- Henrico Doctors' Hospital (Richmond, Virginia)
- Bon Secours – St. Mary's Hospital of Richmond (Richmond, Virginia)
- Sentara Halifax Regional Hospital (South Boston, Virginia)

Located in New Canton is the Central Virginia Community Health Services, a division of Central Virginia Health Services, Inc. This facility provides comprehensive medical care for the residents of Buckingham County and some residents from the surrounding area on an outpatient basis (including physical therapy, dentistry and a pharmacy).

Formerly located in Dillwyn was Buckingham Family Medicine. This facility on Brickyard Drive provided general medical care for the residents of Buckingham County and served as a satellite facility with Martha Jefferson Hospital located in Charlottesville. Centra Health has acquired the site and is in the process of locating a new clinic in this location.

In addition, Buckingham County has two (2) dentist offices, Buckingham Family Dentistry, LLC and Central Virginia Dentistry (Dr. Walter Saxon, Jr. DDS, PC). One orthodontist, Dr. William Horbaly, is based in Charlottesville but has satellite office hours at Dr. Saxon's Office. There is one (1) pharmacy, Dillwyn Pharmacy. The County also has one (1) physical therapy business – Progressive Therapy, Inc. (located in Dillwyn) and a chiropractic business - Arvonía Chiropractic Center (located in Arvonía).

Nursing Homes

There is one (1) nursing home located in Buckingham County. Heritage Hall Dillwyn is a state certified/licensed nursing home. The facility has a total of 60 beds. Onsite services provided by Heritage Hall Dillwyn include the following: daily activities, dietary services, housekeeping services, mental health services, nursing services, occupational therapy services, physical therapy services, physician services, podiatry services, social work services, and speech/language pathology services.

Library

Buckingham County has two (2) libraries - one is located on North James Madison Highway in Dillwyn and the other is located in the Village Center of Yogaville. The Buckingham County Library is one (1) of two (2)

DRAFT Buckingham County Comprehensive Plan, 2023 - 2028

branches of the Central Virginia Library system. The other branch is located in the Town of Farmville in neighboring Prince Edward County.

Museum

Buckingham County is fortunate to have a beautiful historical museum. The Housewright Museum, located across from the Buckingham Courthouse Village Center, contains two floors full of Buckingham history. Included are old photos, documents, furniture, farm implements, toys, family records, and much more. The group responsible for the operation of the museum is Historic Buckingham Inc.

Religious Facilities

There are approximately 70 churches of various denominations in the area including the following: Apostolic, Baptist, Baptist (Independent), Catholic, Church of Jesus Christ of Latter-Day Saints, United Methodist, Pentecostal Holiness, Presbyterian, etc. There are also various non-denominational churches located in the area.

Also located within the County is the Light of Truth Universal Shrine (LOTUS), international headquarters of Integral Yoga Institute. It is located at Satchidananda Ashram-Yogaville, on Route 604, between Routes 56 and 601. Dedicated to the light of all faiths and to world peace, LOTUS is unique in the world. LOTUS is the first interfaith Shrine to include altars for all faiths known and yet unknown.

Water Service/Sewer Service

Wells provide the main supply of domestic water needs of the County's rural residents. However, a portion of the County is serviced by a public water system. Buckingham County provides the Town of Dillwyn residents and some surrounding areas with water service.

A large majority of the residents in the rural areas of the County use individual septic systems. However, a small portion of the County is serviced by a public sewer system. The Town of Dillwyn is all served by the County Public Sewer. There is one additional community sewer system within Buckingham County. Within the community of Yogaville, the central sewer system main plant is a 10,000 gallon-per-day sewer treatment facility. In the same area, a 2,500 gallon-per-day sand filter system serves the laundry mat.

Solid Waste Collection/Recycling

Buckingham County operates seven (7) manned recycling centers where County residents may bring their household waste and/or recyclables for disposal. These centers are managed by the County's Public Works Department. The Department administers the Solid Waste Ordinance, in conjunction with the Virginia Department of Environmental Quality and Environmental Protection Agency regulations relating to solid waste issues. The convenience centers are at the following locations:

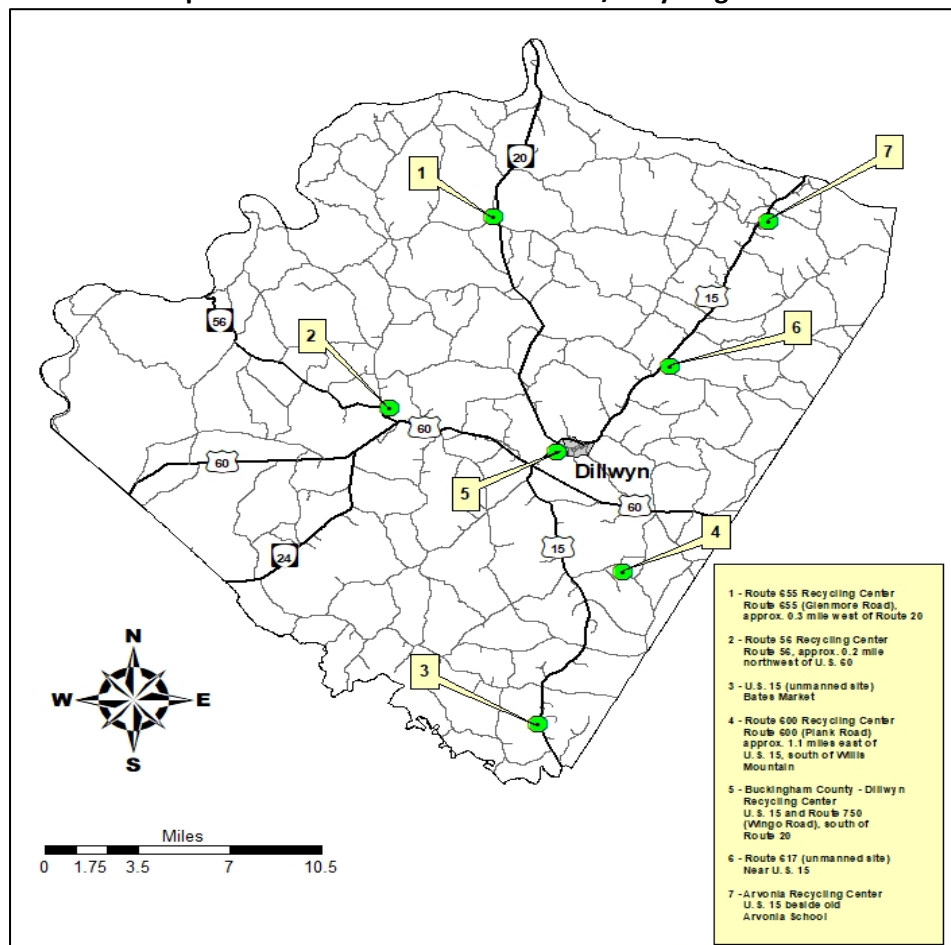
- **Arvonnia Solid Waste & Recycling Center** is located at 29420 N. James Madison Hwy (Route 15), beside the old Arvonnia Primary School. This site offers newspaper recycling, metal recycling, general household waste, construction debris, and appliances.
- **Route 600 Recycling Center** is located 7121 Plank Rd, just 1 & 1/10 mi off of S James Madison Hwy (route 15). This site offers newspaper recycling, metal recycling, general household waste, and construction debris.

DRAFT Buckingham County Comprehensive Plan, 2023 - 2028

- **Route 655 Recycling Center** is located at 4487 Glenmore Rd (route 655) just 3/10 mi off of N Constitution Rte (route 20). This site offers newspaper recycling, metal recycling, general household waste, and construction debris.
- **Route 56 Recycling Center** is located at 10238 S. James River Rd (route 56) just 2/10 mi off of James Anderson Hwy (route 60). This site offers newspaper recycling, metal recycling, general household waste, and construction debris.
- **S. James Madison Recycling Center** is located at 2001 S. James Madison hwy. This site offers general household waste containers.
- **Gravel Hill Recycling Center** is located at 60 Gravel Hill Rd. This site offers general household waste containers.

All sites are open 24 hours daily. Electronics may be recycled at the Buckingham County Recycling Center between the hours of 6:00a.m- 7:00p.m. seven days a week.

Map 21 – Solid Waste Collection Sites/Recycling Centers



Map created by CRC – August 2014 (updated September 2023)

Source: Buckingham County Solid Waste/Recycling Director)

DRAFT Buckingham County Comprehensive Plan, 2023 - 2028

Law Enforcement and Public Safety

The Buckingham County Sheriff's Office provides law enforcement protection to the citizens of Buckingham County. The Sheriff's Office is responsible for criminal investigations, calls for service, court room security, and service of the civil process. The Sheriff's Office employees approximately a total of 30 citizens – including administrative staff, court officers, dispatch staff, law enforcement and other personnel. The Sheriff's office also runs 9-1-1 dispatch out of their office. The Virginia State Police (VSP) provides traffic enforcement and investigative support for Charlotte County. The incorporated town of Dillwyn does not currently have an officer, but they still receive mutual aid response from the VSP and the Buckingham County Sheriff's Office.

Fire and Rescue

Buckingham County is protected by a coordinated emergency medical services (EMS) system that includes approximately 35 full-time and part-time staff plus three (3) active volunteers. The EMS is led by the Chief of the Buckingham County Department of Emergency Services.

Buckingham EMS has three (3) facilities. One facility is located just south of Dillwyn, another is located in the community of Arvon, and the other is located in the community of Glenmore. These facilities offer 24/7 medical level ambulances. Previously, the Buckingham Volunteer Rescue Squad (BVRS) provided the EMS services for the County for almost 50 years. In 2020, Buckingham County took over the management of the EMS services including staffing after BVRS transferred control. The County initially selected to contract the EMS services to the Delta Response Team through a transitional year. In Fall of 2021, that contract was ended and the County moved forward with an all-County employed staff.

The County has four (4) all-volunteer fire departments. The Dillwyn Volunteer Fire Department serves the Town of Dillwyn, and surrounding areas. The fire station is located on North James Madison Highway in Dillwyn. The Arvon Volunteer Fire Department serves the village center of Arvon and the surrounding area. The fire station is located on Arvon Road. The fire house also houses one of the EMS facilities as well. The Toga Volunteer Fire Department serves the southwestern portion of the County and is located on Mount Rush Highway. The Glenmore Volunteer Fire Department serves the Village Center of Glenmore and surrounding area. The fire station is located on Firehouse Road. There is an EMS facility on Glenmore road. On various occasions, fire companies assist one another where needed. Mutual Aid Agreements currently exist with the following counties: Albemarle, Fluvanna, Cumberland, Nelson and Prince Edward

The Buckingham County Board of Supervisors and the Department of Emergency Services have worked together to develop a 5-year strategic plan of growth and improvement for the County's fire and rescue services. over the next 5 years has been developed. This plan was developed after careful evaluation of metrics and trends pertaining to the Department, and will require planning and budgeting for the targeted initiatives. They include:

- Partnering with Arvon Volunteer Fire Department (AVFD) to immediately place 12-hour daytime EMS coverage in their fire station Monday through Friday, with a plan to transition this to 24/7 coverage within the next 1-2 years (either out of the AVFD station or in a new station).
- Construction on a fourth EMS station in District 3 (Curdsville/Sheppards) area. The end goal would be 24/7 coverage at this station as well, leading to the county being covered by four 24/7 EMS units.
- Renovations for the Dillwyn EMS Station, which is 20 years old.

DRAFT Buckingham County Comprehensive Plan, 2023 - 2028

- Purchase of one new ambulance every other year. This purchase rate coincides with projected needs based upon the life-span of Buckingham County's EMS unit.

Because the County is large in area and the existence of public water is limited, many areas of the County have dry hydrants (see Map 22). Dry hydrant systems ensure an adequate water supply in areas where conventional fire protection is not available. Dry hydrant systems consist of a non-pressurized PVC pipe with a fire hydrant head above ground and a strainer below water. Dry hydrants, placed strategically around a rural fire district in ponds, lakes, streams or other bodies of water, eliminate the need for trucks to return to town to refill. Pumping water into tank trucks from these sources saves precious time. Reducing the travel distance for shuttling water saves time and energy. Adequate water supplies can reduce fire losses and lives. They may also lower the cost of insurance. Improved fire protection can stimulate economic growth by making an area more attractive to homeowners and developers.

Telecommunications and Internet Access

Within any community, access to fiber optics is extremely important. The unprecedented growth in telecommunications capacity and in telecommunication applications has changed the way all persons and businesses function. Due to the County's rural nature and limited resources, it is unable to implement the infrastructure necessary for fiber optics on its own. There are a number of Internet/telephone/cell service providers in the County. They include: Firefly, Brightspeed, Shentel, AT&T, US Cellular, Verizon, DirectTV, Hughes Net, and Viasat.

Due to the lack of current telecommunication access in the County, members of the community have provided alternative access for citizens to provide access to the internet in areas that are otherwise do not have access. The Buckingham County Library branch also provides free Wifi access at their facility. This allows for Buckingham County students to complete online school work even when the internet is not accessible at home.

Buckingham County and the entire region are served by Mid-Atlantic Broadband Communities Corporation (MBC). Using a \$4,000,000 federal matching grant from the U.S. Department of Commerce Economic Development Administration and a \$4,000,000 grant from the Virginia Tobacco Region Revitalization Commission, MBC built an open access 144 strand fiber optic backbone which extends over 300 miles and serves more than 350 businesses, commercial, community colleges and industrial parks in Southside Virginia. See Map 24 for MBC coverage in the County.

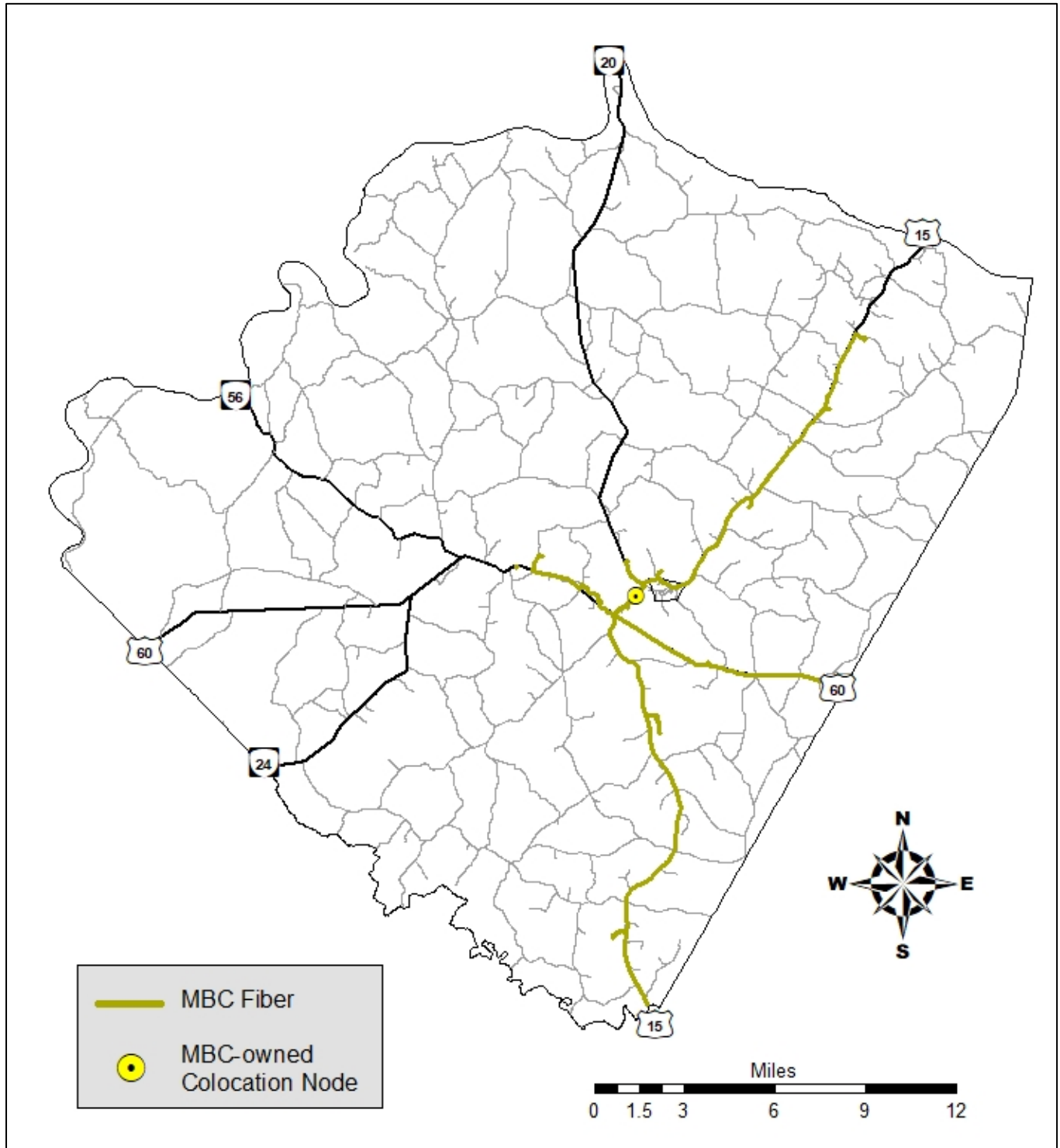
To combat the lack of fiber optics within rural America, the Federal Communications Commission established a Connect America Fund (CAF) to help accelerate the broadband buildout to 23 million homes in rural America including Buckingham County. One hundred and three (103) bidders won \$1.49 billion over 10 years. FireFly fiber broadband, wholly-owned subsidiary of Central Virginia Electric Cooperative (CVEC), won the bid for the areas available in Buckingham County. The Communication Commission also established the \$20.4 billion Rural Digital Opportunity Fund to bring high speed fixed broadband to service rural homes and small businesses that are lacking. FireFly also won the bid for the areas available in Buckingham County.

Additionally, Buckingham County was part of a December 2021 grant award under the Department of Housing and Community Development's Virginia Telecommunications Initiative (VATI) program. Buckingham was part of one regional application. One application was submitted by Thomas Jefferson Planning District, in affiliation with FireFly fiber broadband, to build fiber in unserved locations and

DRAFT Buckingham County Comprehensive Plan, 2023 - 2028

achieve universal access for multiple counties across Central Virginia. This project was awarded more than \$79 million under the VATI program.

Map 23 – Mid-Atlantic Broadband Fiber Routes in Buckingham County



Map created by CRC – October 2022

Source: MBC