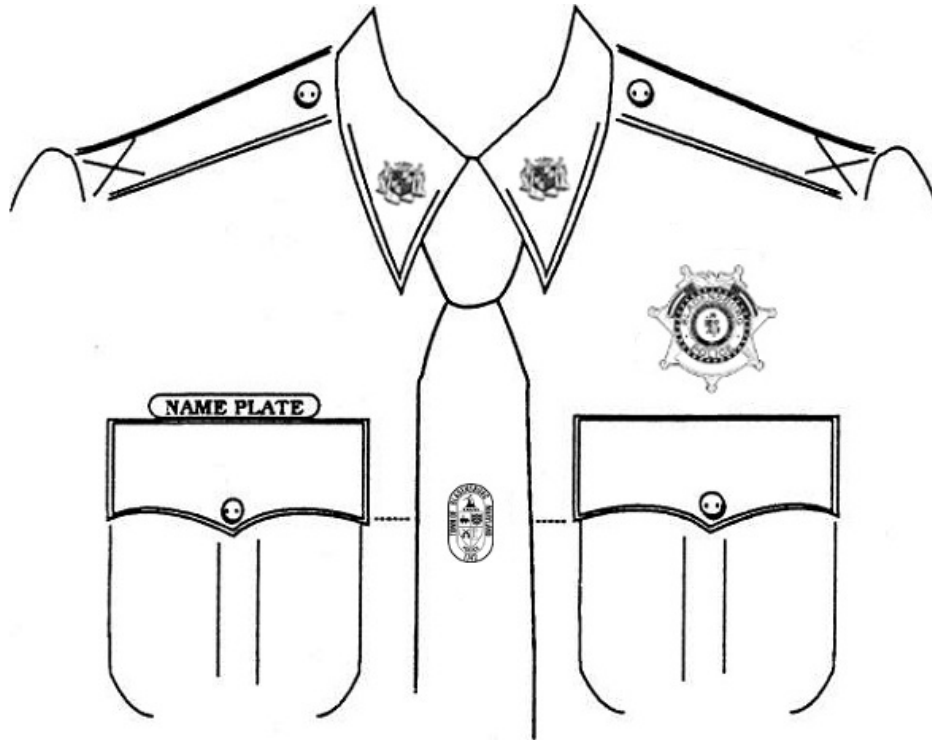


Basic Uniform Shirt & Accouterments



NAME PLATE: Worn with bottom edge against top of shirt pocket flap, and centered above the flap.

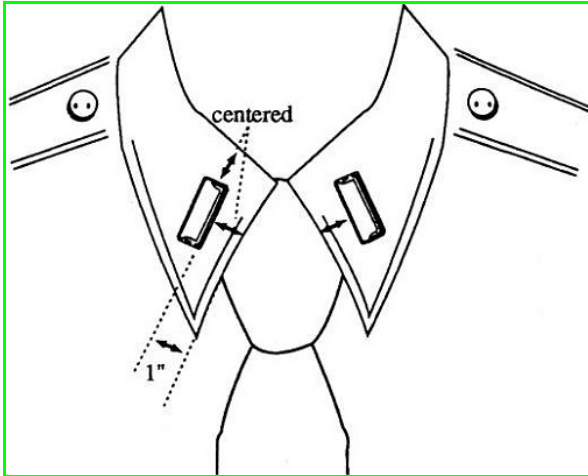
TIE DEVICE: Worn centered on the tie at a point centered on the horizontal line formed by an extension of the tips of the shirt pocket flaps.

Rank Devices

Commissioned Officer Shirts

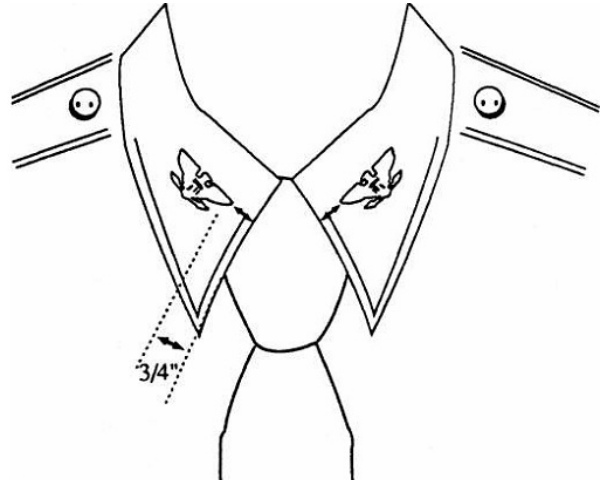
Lieutenant

Device centered parallel to collar edge

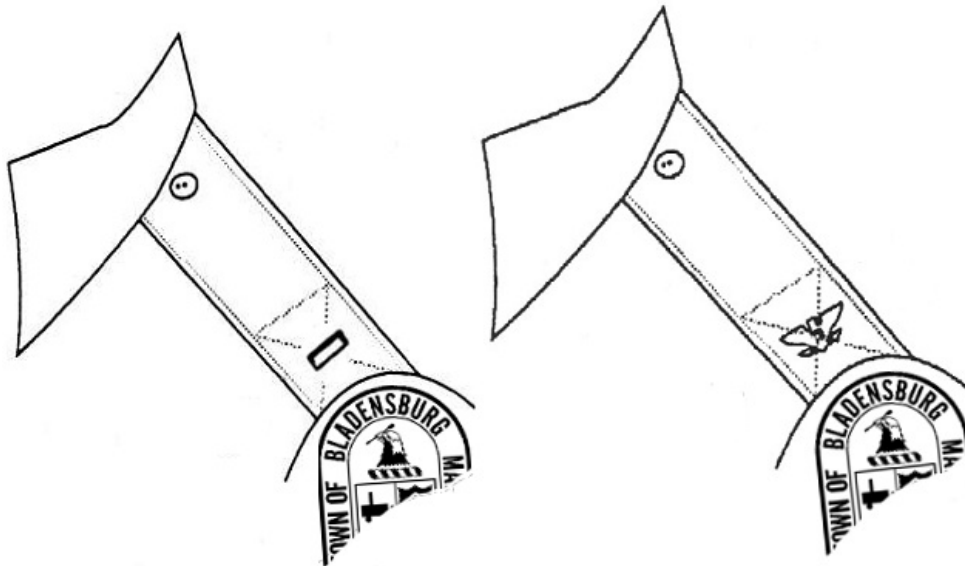


Chief of Police

Device centered on collar with wings parallel to top collar edge

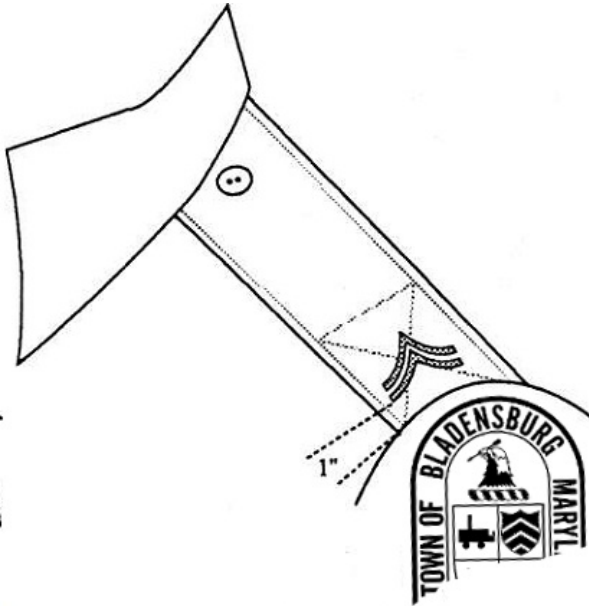


Commissioned Officers Jacket, Sweater, & Blouse



Rank devices for commissioned officers shall be worn centered on the epaulet, with the edge of the device one inch from the end of the epaulet.

Non-Commissioned Officers Jacket & Sweater



Rank devices shall be worn on the epaulets of the jacket and pullover sweater. The devices shall be worn centered on the epaulet, with the edge of the device one inch from the end of the epaulet.

Rank devices are those approved for wear by the following U.S. Army ranks:



Single Stripe U.S. Army Rank -Pay grade: Private E/2
Police Rank: Police Officer First Class

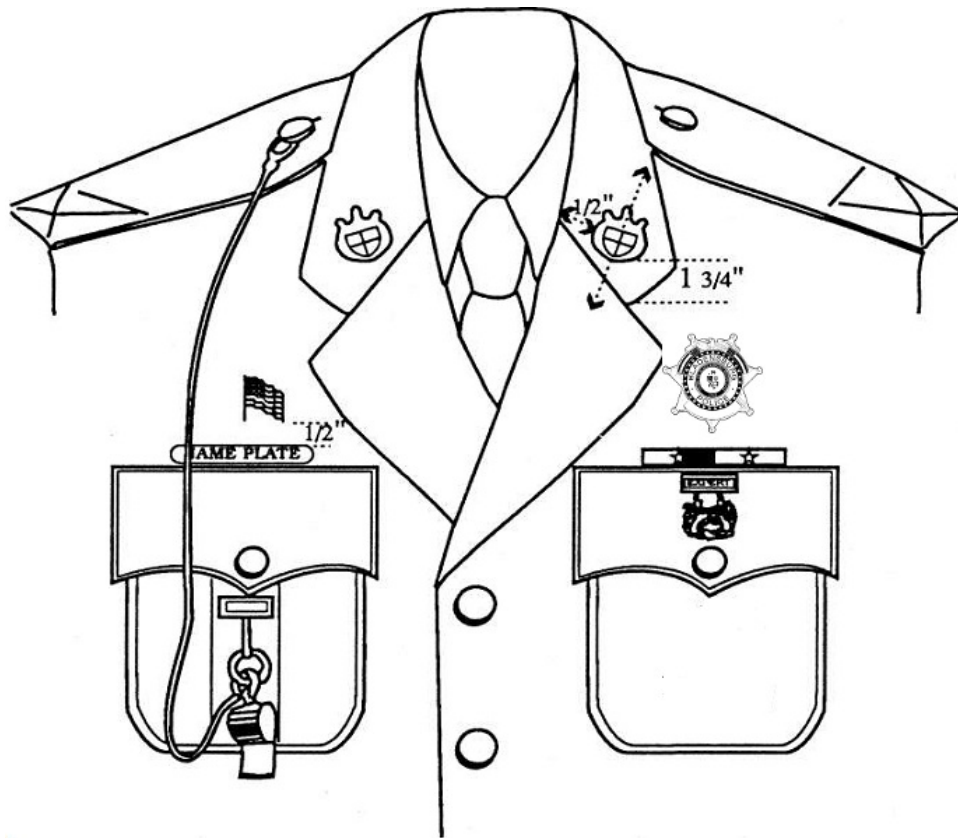


Double Stripe U.S. Army Rank -Pay grade: Corporal E/4
Police Rank: Corporal



Triple Stripe U.S. Army Rank -Pay grade: Sergeant E/5
Police Rank: Sergeant

Blouse & Accouterments



NAME PLATE: Worn with bottom edge against top of shirt pocket flap, and centered above the flap.

WHISTLE AND CORD: Worn as shown.

WHISTLE HOOK: Worn 1/4" and centered below the center point of the right pocket flap.

MARKSMANSHIP MEDAL: Worn centered 1/4" and centered below the top of the left pocket flap.

AWARDS: Worn above the left pocket.

COLLAR ORNAMENT WITH STATE SEAL: Aligned as shown: Inside edge 1/2" from inside collar edge, and outside bottom edge closest to top collar point is 1 3/4" from the point.